

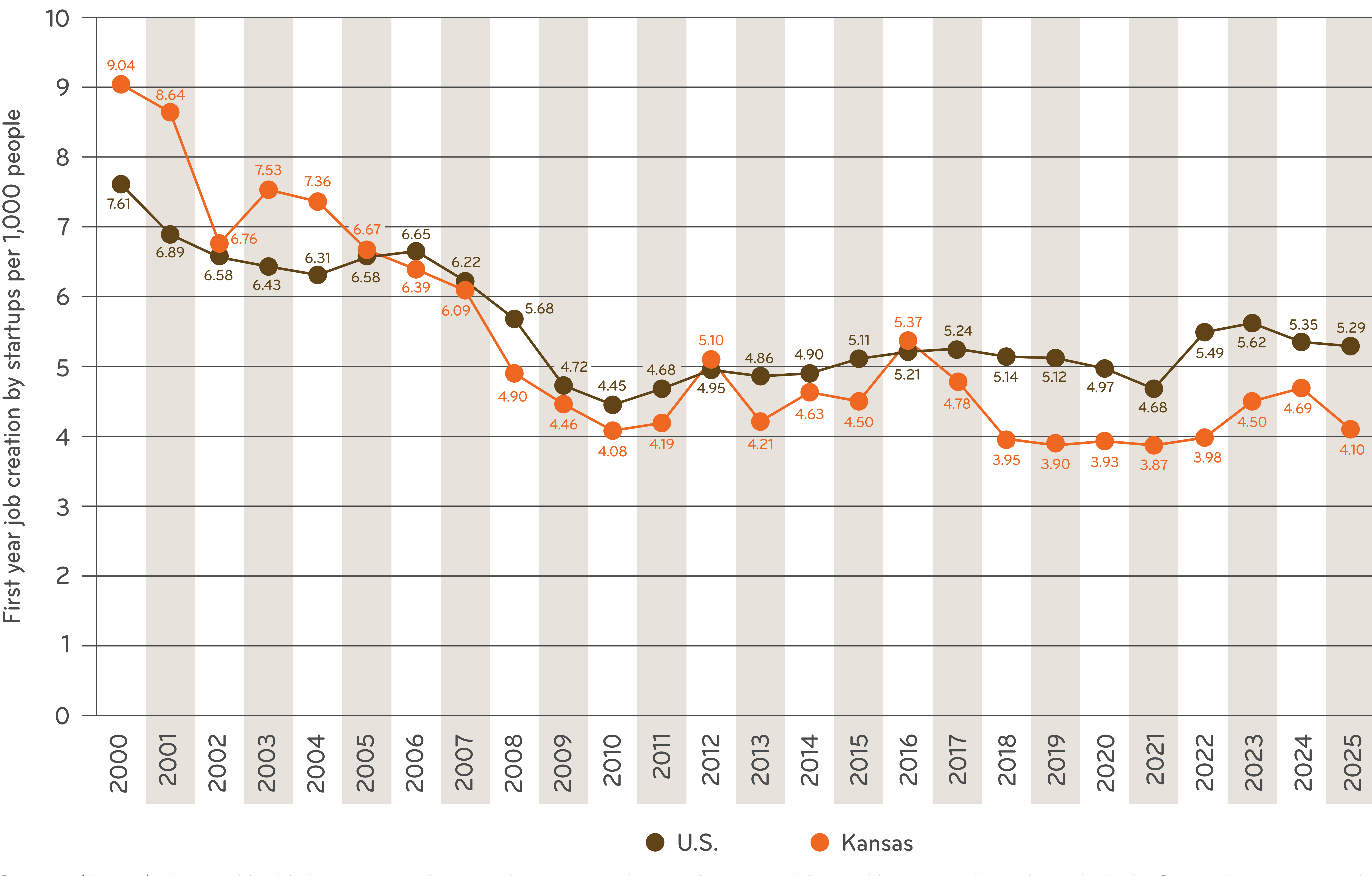
# UPWARD MOBILITY Data Walk



♿ Accessible Version

**What this measures:**  
The number of total jobs created by new businesses in their first year per 1,000 people based on state and national populations.

First Year Job Creation by Startups in Kansas and the U.S., 2000-2025



Source: (Figure) Kansas Health Institute analysis of data received from the Ewing Marion Kauffman Foundation's Early-Stage Entrepreneurship in Kansas, 2025; (Narrative) Fairlie et al. *The Promise and Peril of Entrepreneurship: Job Creation and Survival Among U.S. Startups*, 2023.



## First-year job creation rates

by startups noticeably decreased in Kansas and the United States between 2000 and 2010, then remained steady between 2011 and 2025.

National data show about half of startups survive after two years, and only one-third survive after five years. While first-year job creation levels are relatively low, surviving startups show a continual increase in the number of employees hired between two and seven years after startup.

Want to learn more about the data?

Funding and Support Provided by



Analysis and Design by

