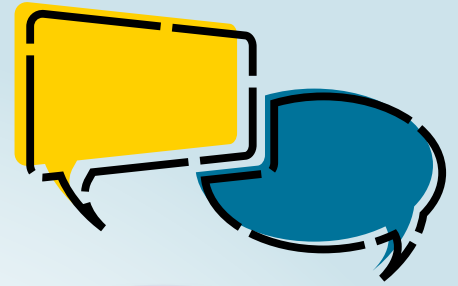




HUNGER FREE

K A N S A S

Data Walk



Discussion Questions

What surprises you?

What else do you want to learn?

Food is Medicine

More than \$18,000

spent by Medicare annually on average per beneficiary with diabetes. Average Medicare spending is higher for those with kidney disease, heart disease or more than one chronic disease.

Social Services

1 in 10

adults receive nutrition assistance benefits (10.2%) or free groceries (7.0%) for their household.

Food Insecurity

2 to 3x higher

Black Kansans (3 in 10) and Latino Kansans (2 in 10) experience higher food insecurity rates than non-Hispanic White Kansans (1 in 10).

In 39 of 105

counties, 20 percent or more of children experience food insecurity.

ALICE

(Asset Limited, Income Constrained, Employed)

Household Survival Budget

\$71,892

The estimated survival budget for a Kansas household of 2 adults and 2 children in child care.

In 63 of 105

counties, at least 4 in 10 households earn less than the ALICE Survival Budget.



Grocery Spending

Economic disparities

Although households with the highest 20% of income spend nearly 2.5 times the amount on groceries as households with the lowest 20% of income, these expenses are a much lower share of their annual income.

