

MARCH 10, 2026

Whether it's your lunch, your questions or your opinion, be sure to



KANSAS HEALTH INSTITUTE
Informing Policy. Improving Health.

Bring It!

Bring It Finale: Turning Health Policy
Insights into Action

Hello!



Karsen DeWeese, M.P.H.
Communications Assistant
Kansas Health Institute

✉ kdeweese@khi.org



Who We Are



- Nonprofit, nonpartisan educational institution based in Topeka.
- Established in 1995 with a multi-year grant from the Kansas Health Foundation.
- Committed to convening meaningful conversations around tough topics related to health.



Agenda

- **Welcome & Framing the Purpose**
- **Bring It Learning Series Overview**
- **Breakouts: Sense-Making Circles**
- **Whole-Group Harvest**
- **Closing Reflection**



We Want to Hear from You!
You can be anywhere today.

*What brings you to the
2026 Bring It finale?*



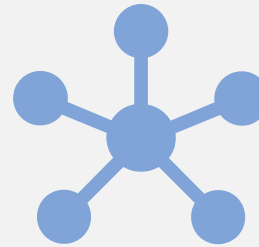
Framing the Purpose



Participant-driven,
dialogue-focused



Grounded in
reflection of
key themes
from Bring It
series



Focused on
shared
sense-making



Oriented
toward
collaboration
and learning



Community Agreements



Practice respect
and curiosity.



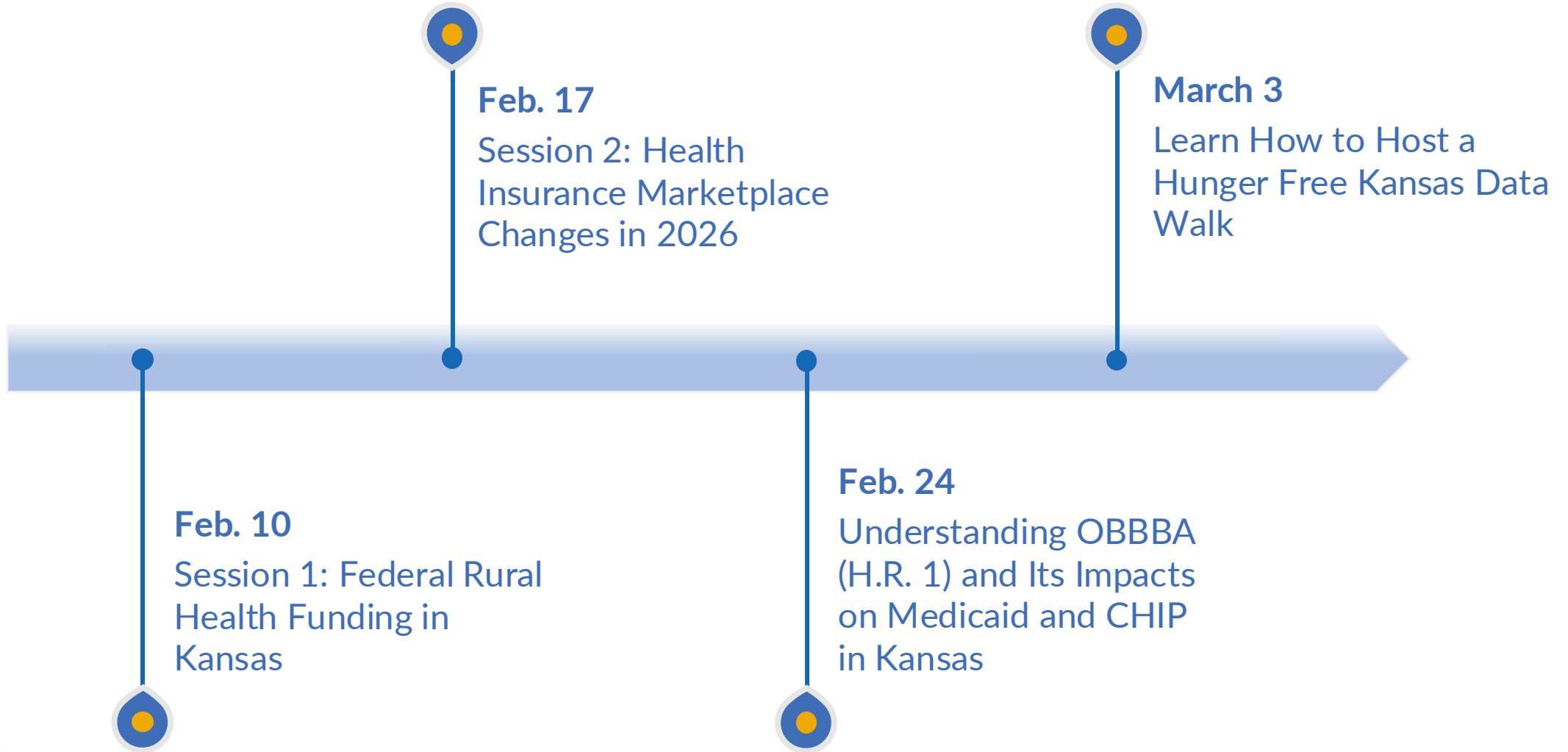
Engage
thoughtfully.



Be mindful of the
shared space.



Bring It Overview



Breakout Sessions

Choose one of four discussion rooms

Room 1



Federal Rural
Health
Funding

Room 2



Marketplace
Changes in
2026

Room 3



OBBBA
Impacts on
Medicaid and
CHIP

Room 4



Hunger Free
Kansas Data
Walks



Hello!



**Valentina Blanchard, M.P.H.,
M.S.W.**

Analyst

Kansas Health Institute

✉ vblanchard@khi.org



Whole-Group Harvest

Each breakout shares:



One key insight



One open question



One thing to watch

As you listen, pay attention to:

- Common challenges
- Shared questions
- Emerging opportunities



Closing Reflection

Choose one to answer in the chat:



Option A

What is one thing that **shifted your thinking** today?



Option B

What is **one conversation** you want to continue after today?



We Value Your Feedback!



 bit.ly/4kYzMfn



Access On Demand Resources



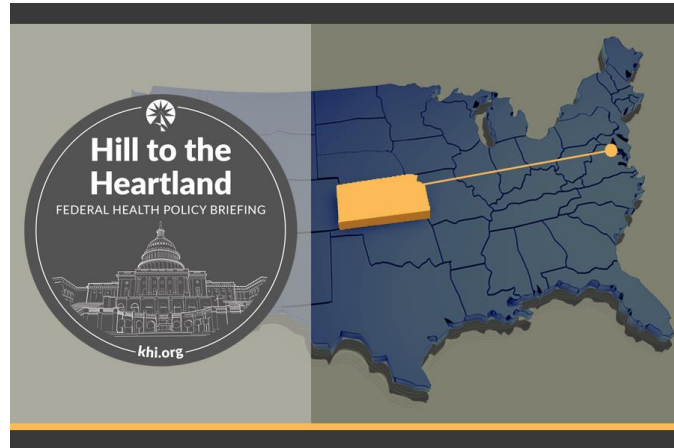
 bit.ly/4cNoeJS



Explore more resources at khi.org



Podcasts



Federal Policy Updates



Recent Reports



Connect With Us



KANSAS HEALTH INSTITUTE

Informing Policy. Improving Health.

www.khi.org

@KHIorg



212 SW 8th Avenue | Topeka, KS | 785.233.5443