

MARCH 3, 2026

Whether it's your lunch, your questions or your opinion, be sure to



KANSAS HEALTH INSTITUTE
Informing Policy. Improving Health.

Bring It!

Learn How to Host a Hunger Free Kansas Data Walk

Who We Are



- Nonprofit, nonpartisan educational institution based in Topeka.
- Established in 1995 with a multi-year grant from the Kansas Health Foundation.
- Committed to convening meaningful conversations around tough topics related to health.



Hello!



Samiyah Para-Cremer Moore
Senior Analyst & Portfolio Strategist
Kansas Health Institute
sparacremer@khi.org



Viktoria Sterkhova
Analyst
Kansas Health Institute
vsterkhova@khi.org



Avanthi Chatrathi
Analyst
Kansas Health Institute
achatrathi@khi.org



Acknowledgments

We recognize the following individuals for their contributions:



Stewart Cole
Multimedia Specialist



Emma Uridge
Analyst



Wen-Chieh Lin, Ph.D.
Director of Research



Theresa Freed
*Director of Strategic
Communication and
Engagement*



Kari Bruffett
President & CEO



Learning Objectives

- **Describe** the Data Walk process.
- **Identify** the ingredients of success for implementing the Data Walk in your community.
- **Apply** practical strategies for planning and facilitating the Data Walk in your community.



Agenda



The Data Walk Model



Overview of Hunger Free Kansas Data Walk



Planning a Data Walk



Hosting a Data Walk



Panel Q / A



We Want to Hear from You!

You can be anywhere today. *What brings you to today's session?*



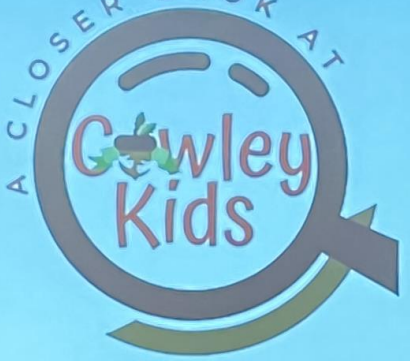
The Data Walk Model



KANSAS HEALTH INSTITUTE

Informing Policy. Improving Health.

A CLOSER LOOK AT



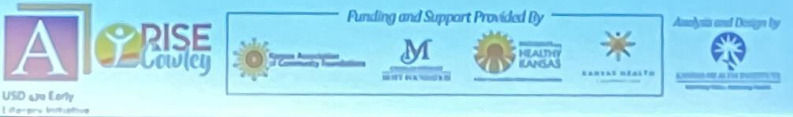
Cowley Kids

Data


WALK

An Initiative of Legacy Foundation

Funding and Support Provided By



Analysis and Design by

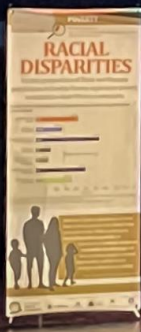


SPOTLIGHT ON DIVERSITY



E

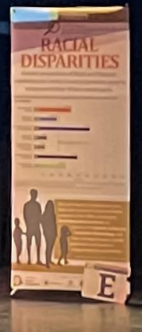
RACIAL DISPARITIES



E

A man in a suit is speaking on stage, gesturing with his hands.

RACIAL DISPARITIES



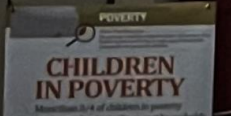
E

SPOTLIGHT ON DIVERSITY



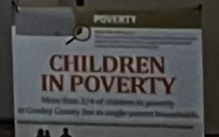
E

CHILDREN IN POVERTY



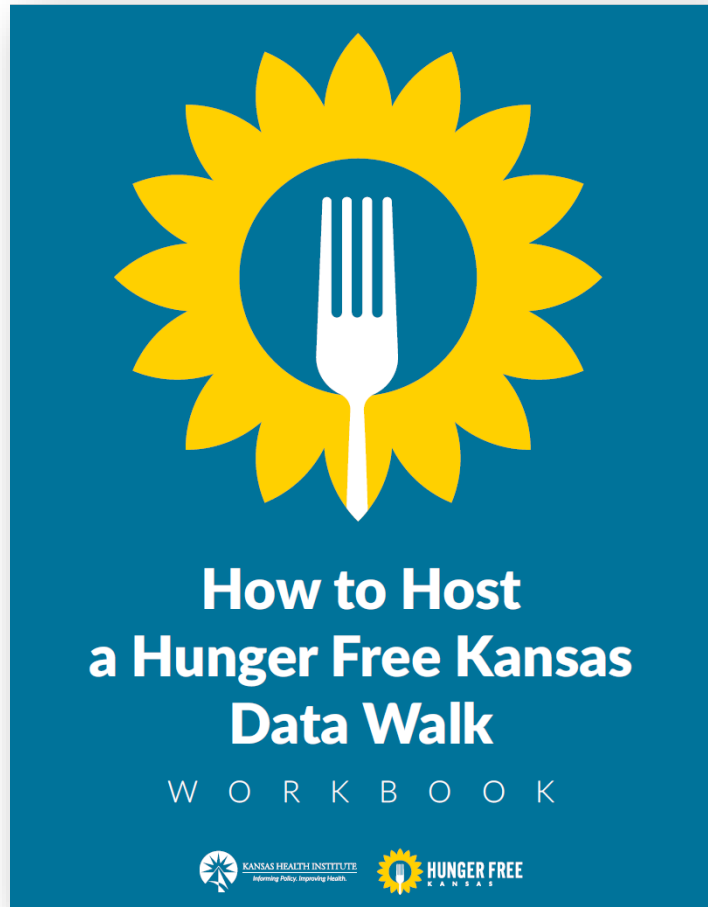
E

CHILDREN IN POVERTY



E

Hunger Free Kansas Data Walk Workbook



Access your
Workbook in the
chat!



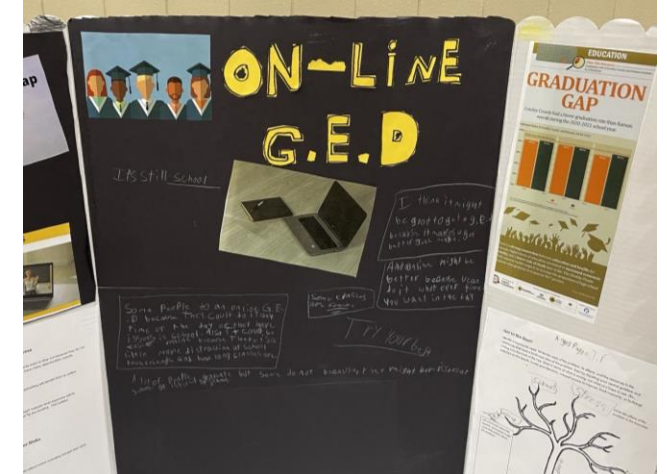
Data Walks as Community Storytelling

Setting

- Community Need
- Leaders Motivated for Change
- Challenging Discussions
- Willingness to Learn Together



Data Walk Formats



Data Walk Event

Event Component

Meeting or Classroom Activity



What about Displaying the Posters?

Ask yourself, what is your **goal**?

Will only displaying the posters meet that **goal**?



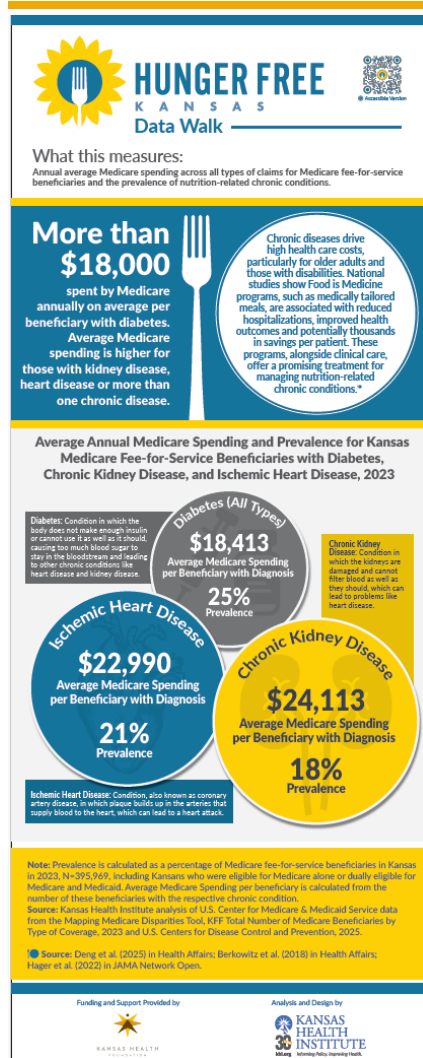
Overview of the Hunger Free Kansas Data Walk



KANSAS HEALTH INSTITUTE

Informing Policy. Improving Health.

Poster Components



Accessible to Screen Readers

What this Measures

Key Finding and Context from Literature

Graphic Display of Data

Technical Note and Source

Acknowledgements

× 8

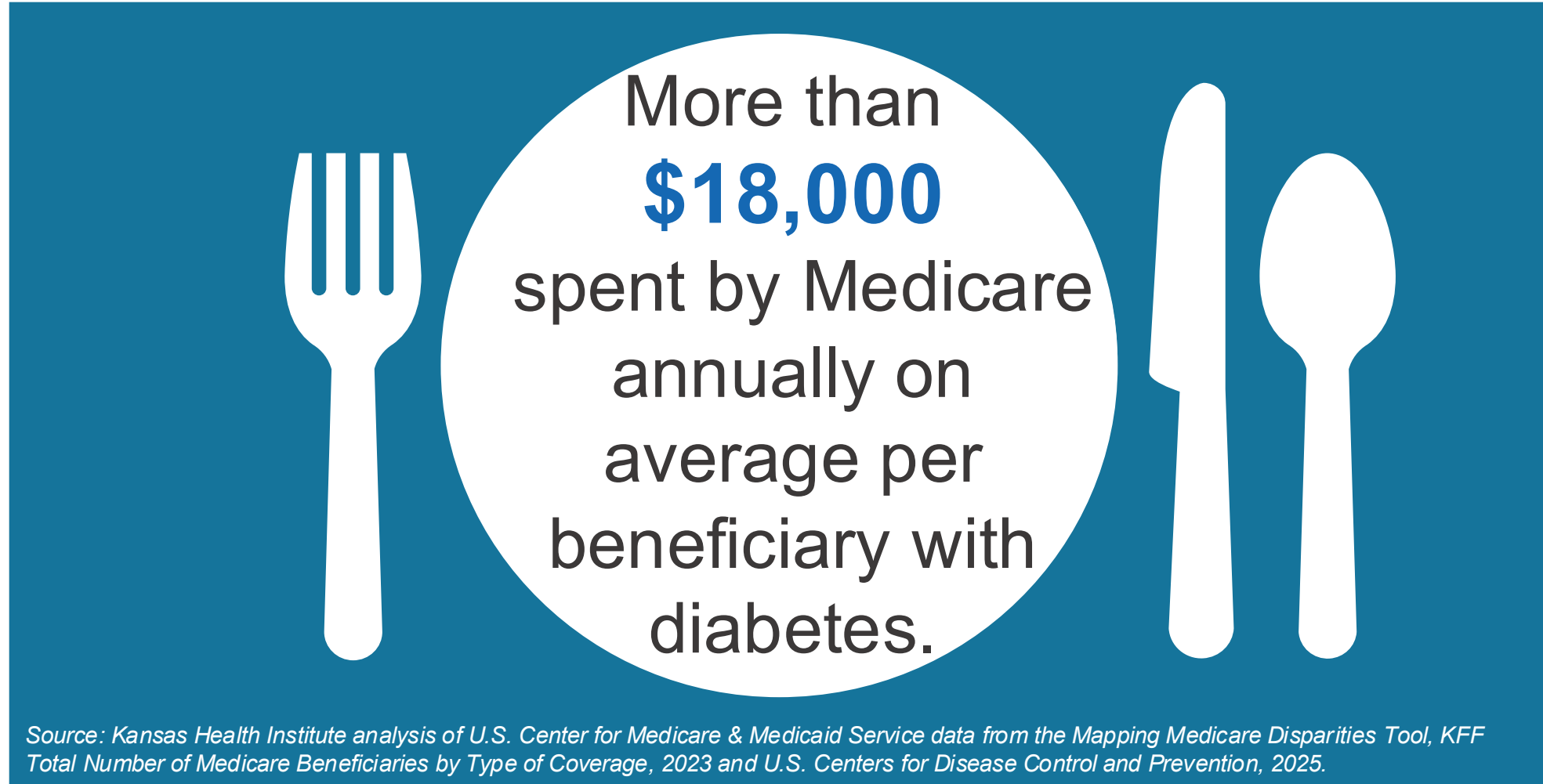
↓
Set = 16

Hunger Free Kansas Posters

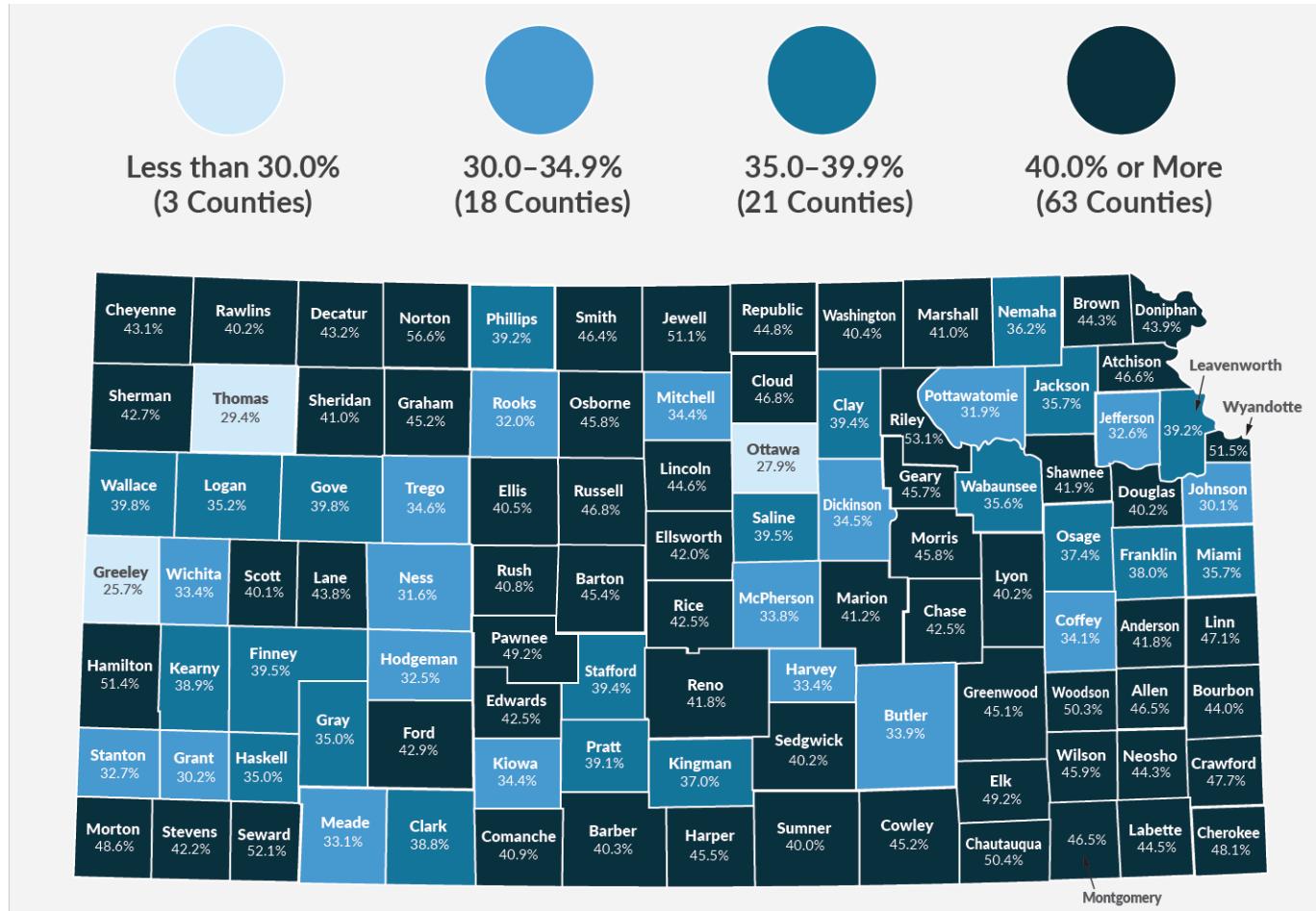
Food Insecurity by Race and Ethnicity	ALICE Survival and Stability Budgets	Households Living Below ALICE Survival Budget Threshold by County	SNAP Timeline
Child Food Insecurity by County	Grocery Spending	Social Services	Food is Medicine



Food is Medicine Key Finding



Households Living Below ALICE Survival Budget Threshold by County



**Overall:
39.2%**

Note: Total number of Kansas Households in 2022 = 1,162,920. The map represents the percentage of households in each county unable to meet their estimated Household Survival Budget.

Source: Kansas Health Institute analysis of ALICE Threshold, 2022.

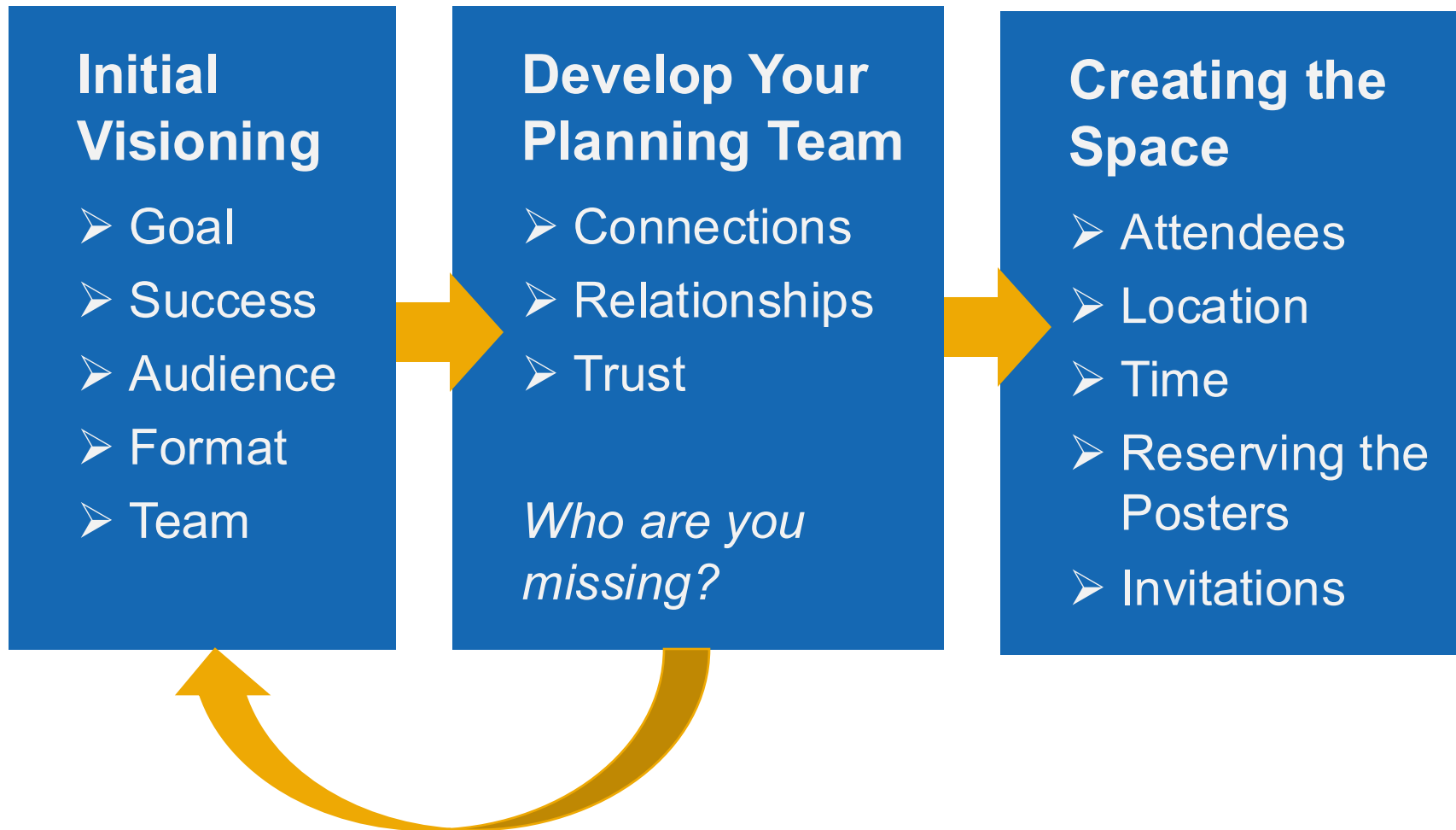
Planning a Hunger Free Kansas Data Walk



KANSAS HEALTH INSTITUTE

Informing Policy. Improving Health.

Planning



Remember: Planning takes time!


Explore the data and submit a request to Hunger Free Kansas.



 bit.ly/3KakdD5



 **HUNGER FREE**
K A N S A S
Data Walk

Analysis and Design by
 **KANSAS HEALTH INSTITUTE**
30 YEARS
khi.org *Informing Policy. Improving Health.*



Reserving Posters: What to Expect



Cost: Free



Max Rental: Up to 30 days (Subject to change based on demand)



Size: Easily fits in a car backseat or trunk



Locations: Pickup & drop off in Topeka or Wichita



Support: Reach out for help at connect@hungerfreekansas.org



Hosting a Hunger Free Kansas Data Walk



KANSAS HEALTH INSTITUTE

Informing Policy. Improving Health.

Ingredients You Will Need



Numbered
Poster
Stations



Group
Assignment



Facilitator to
Set Tone &
Guide



5-8 Minutes
Cycles with
Group



Reflection
and Action
Steps

Core Questions

What surprises you about this data?

What do you want to learn more about?



Additional Tips

- **Make space for interpretation.**
- **Form peer groups with diverse perspectives.**
- **Tell community stories together.**
- **Lean into uncomfortable conversations. Be curious.**
- **Provide avenues for experimentation.**



Panel Q / A



KANSAS HEALTH INSTITUTE

Informing Policy. Improving Health.

Panelists



Erika Debrick Kelly

*Executive Director,
Hunger Free Kansas*



Lindsay Wilke

*Associate Director of
Network Mobilization,
Kansas Health
Foundation*



**Samiyah Para-Cremer
Moore**

*Senior Analyst &
Portfolio Strategist,
Kansas Health Institute*

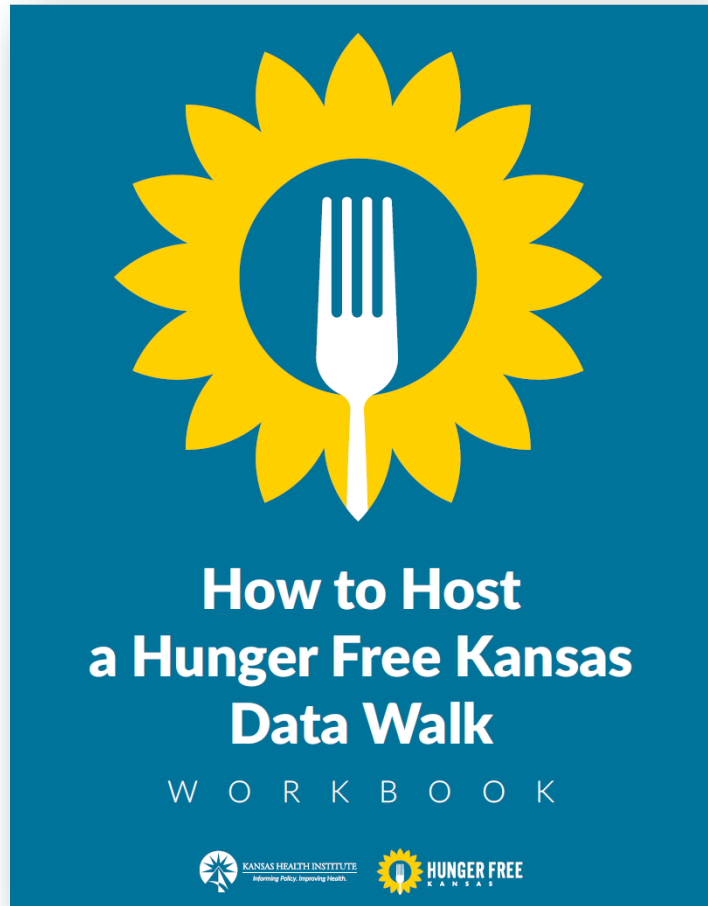


**Facilitator:
Avanthi Chatrathi**

*Analyst, Kansas Health
Institute*



Hunger Free Kansas Data Walk Workbook



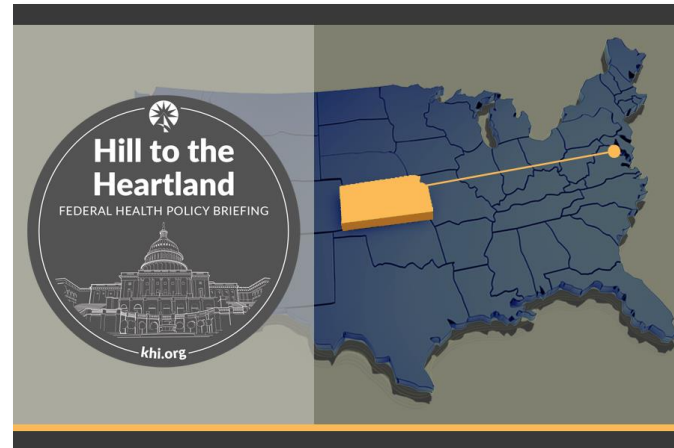
Access your
Workbook in the
chat!



Explore more resources at khi.org



Upcoming Events



Federal Policy Updates



Recent Reports

Connect With Us



KANSAS HEALTH INSTITUTE

Informing Policy. Improving Health.

www.khi.org

@KHIorg



212 SW 8th Avenue | Topeka, KS | 785.233.5443

THANK YOU!

Any Questions?



KANSAS HEALTH INSTITUTE

Informing Policy. Improving Health.