

FEB. 27, 2025



Advancing Age-Friendly Kansas: Strategies for Impact

On Feb. 27, KHI held an event that explored how stakeholders and partners advanced aging initiatives to create an Age-Friendly Kansas. Participants gained insights into effective intergenerational care programs and explored emerging strategies to prevent financial abuse and exploitation of older adults. This guide includes key resources from the event, discussion questions for deeper reflection, and ways to stay connected.



Watch the recording here!

Key Resources

Discover how Age-Friendly Kansas, a statewide initiative, is uniting aging and public health professionals and stakeholders to promote age-friendly communities and policies.

EXPLORE THE INITIATIVE >

Explore the event recap for the virtual convening that launched the Age-Friendly Kansas initiative and sparked a statewide conversation on aging.

VIEW THE RECORDING >

Discussion Questions

- What other programs could use intergenerational strategies?
- What additional safeguards are necessary to prevent financial abuse and exploitation in an era of rapid technological advancement?

Stay Connected!

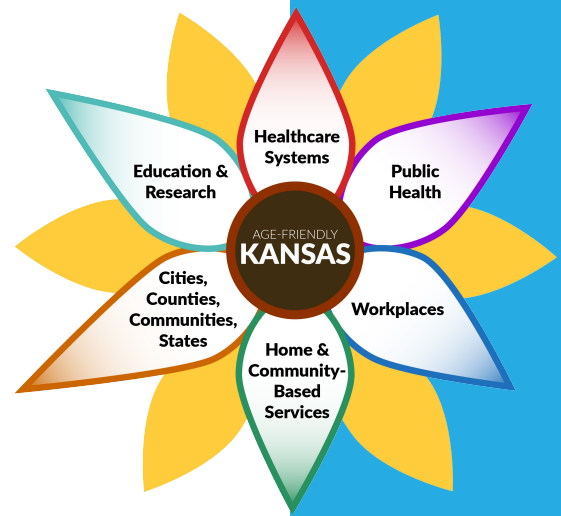
Visit khi.org to explore more resources on health and public health policy.

Follow us on social media [@KHIorg](https://twitter.com/KHIorg).

Register for [upcoming events](#).

Have questions? Reach out at info@khi.org—we'd love to hear from you!





Inisights from Guest Speakers



Dan Klucas, *Securities Commissioner, Kansas Department of Insurance*

Learn how to avoid investment fraud with this investor education tool.

[ACCESS THE TOOL >](#)



Derik Flerlage, *Director of the Bureau of Family Health, Kansas Department of Health and Environment*

Learn about legislation to encourage intergenerational programs.

[VIEW FULL TESTIMONY >](#)



Chrisy Khatib, *Deputy Director of Adult Protective Services, Kansas Department for Children and Families*

Listen to a KCUR interview on how Kansas is working to protect older adults.

[TUNE INTO THE INTERVIEW>](#)