

FEB. 25, 2025

Whether it's your lunch, your questions or your opinion, be sure to



KANSAS HEALTH INSTITUTE  
Informing Policy. Improving Health  
khi.org

**Bring It!**

**Hunger in Kansas**

---

# Who We Are

---



- Nonprofit, nonpartisan educational institution based in Topeka, KS.
- Established in 1995 with a multi-year grant from the Kansas Health Foundation.
- Committed to convening meaningful conversations around tough topics related to health.



# Up Next!

---

A promotional poster for a 'Bring It!' session. The background features several overlapping speech bubbles in shades of pink, yellow, and blue. A central blue circle contains the text 'Whether it's your lunch, your questions or your opinion, be sure to' around the top edge, the Kansas Health Institute logo (a starburst with the number 39) and 'KANSAS HEALTH INSTITUTE' in the center, and 'Informing Policy. Improving Health' and 'khi.org' at the bottom. Below this circle, the words 'Bring It!' are written in a large, bold, black font with a white outline. At the bottom of the poster, the text 'Advancing Age-Friendly Kansas: Strategies for Impact' is displayed in a bold, black font.

Whether it's your lunch, your questions or your opinion, be sure to

39  
KANSAS HEALTH INSTITUTE  
Informing Policy. Improving Health  
khi.org

# Bring It!

**Advancing Age-Friendly Kansas:**  
Strategies for Impact

**Join us for the next  
Bring It! session on  
Thursday, Feb. 27**



# Hello!

---

## **Samiyah Para-Cremer Moore, M.Sc.**

*Senior Analyst & Portfolio Strategist*  
Kansas Health Institute

---

### **KHI Team Lead on:**

Hunger Free Kansas, Data Walks, BCBSKS Pathways to a Healthy Kansas Initiative

### **Research Interests:**

Community-based participation research, food security and other social determinants of health, incorporating health and community perspectives in decision-making and policies



# Authors and Contributors

---

We recognize the following individuals for their contributions:



**Samiyah Para-Cremer  
Moore, M.Sc.**  
*Senior Analyst &  
Portfolio Strategist*



**Valentina Blanchard,  
M.P.H., L.M.S.W.**  
*Analyst*



**Kaci Cink, M.P.H.**  
*Analyst*



**Alex Ferguson, M.A.**  
*Summer Research  
Assistant*



**Wen-Chieh Lin, Ph.D.**  
*Director of Research*



**Kari Bruffett**  
*President & CEO*



# Acknowledgments

---

We recognize the following individuals for their contributions:



**Rebecca Andrade, M.A.**  
*Educational  
Programs Manager*



**Lyndsey Burkhart**  
*Event Coordinator/  
Communication  
Assistant*



**Mikell Burr**  
*Digital  
Communications  
Specialist*



**Stewart Cole**  
*Multimedia  
Specialist*



**Karsen DeWeese**  
*Communications  
Intern*



**Theresa Freed, M.A.**  
*Director of Strategic  
Communication and  
Engagement*



**Cathy McNorton**  
*Senior Communication  
Specialist &  
Publications Strategist*



# Agenda

---

- 12:00 p.m. **Welcome**
- 12:05 p.m. **Setting the Stage:** Hunger and Food Insecurity in Kansas
- 12:10 p.m. **Panel:** Facilitated discussion with experts from policy, charitable, agricultural and business sectors
- 12:55 p.m. **Closing Remarks**
- 1:00 p.m. **Adjourn**



# Setting the Stage



KANSAS HEALTH INSTITUTE

*Informing Policy. Improving Health*

[khi.org](http://khi.org)



# Hunger Free Kansas



Learn more at: [hungerfreekansas.org](https://hungerfreekansas.org)

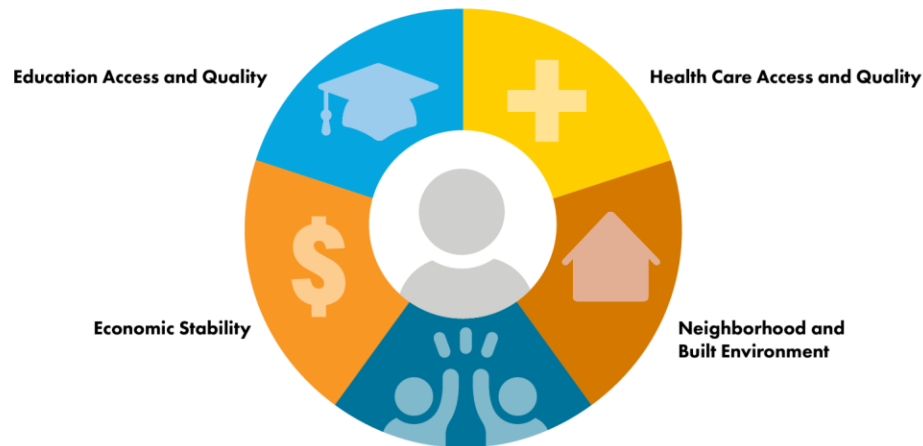


# Methodology

## Report Sections

- Demographics
- Hunger, Nutrition and Food Insecurity
- Food Access Infrastructure
- Wealth Development

## Social Determinants of Health Framework



Source: Healthy People 2030.

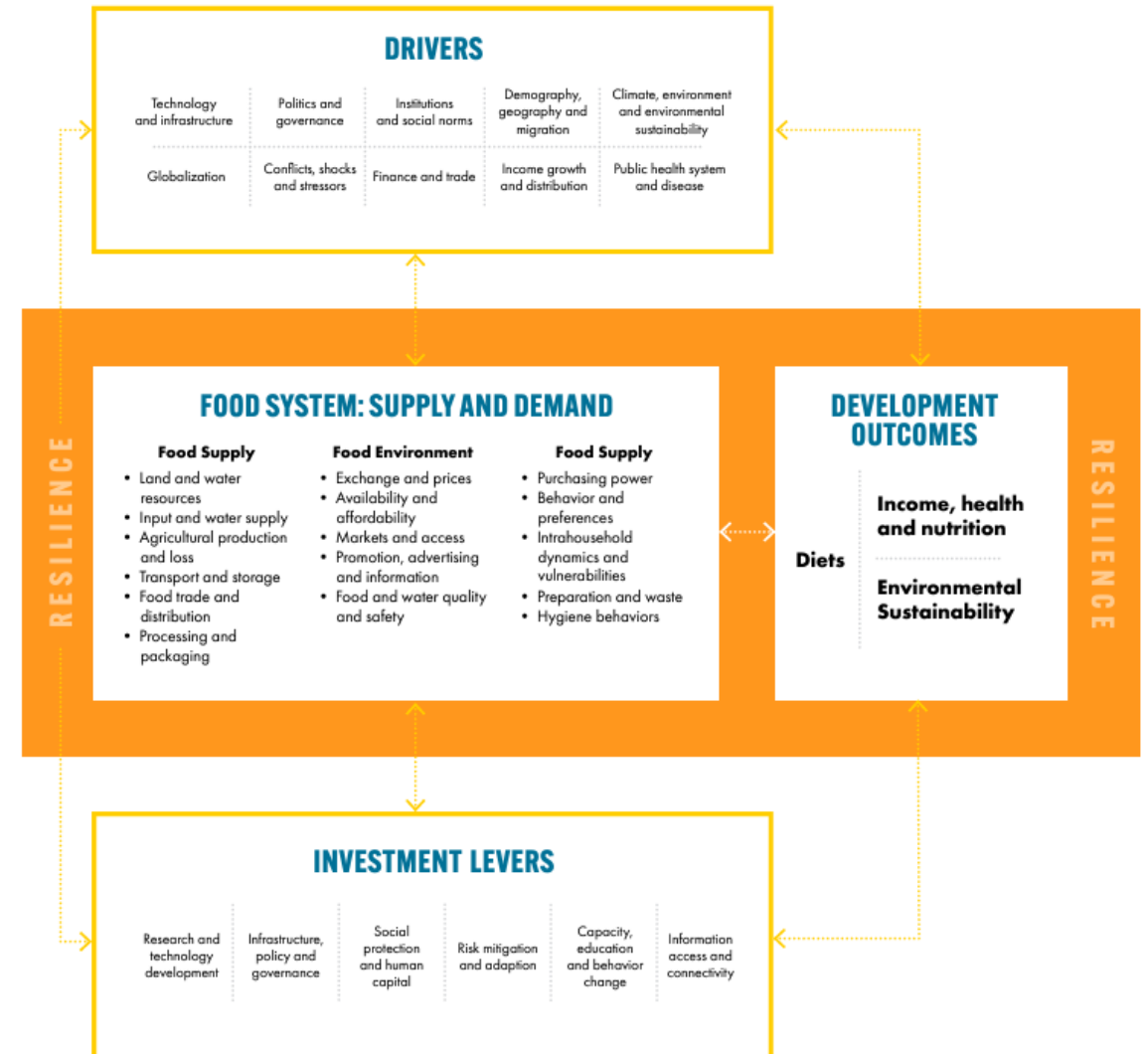
Social and Community Context



KANSAS HEALTH INSTITUTE

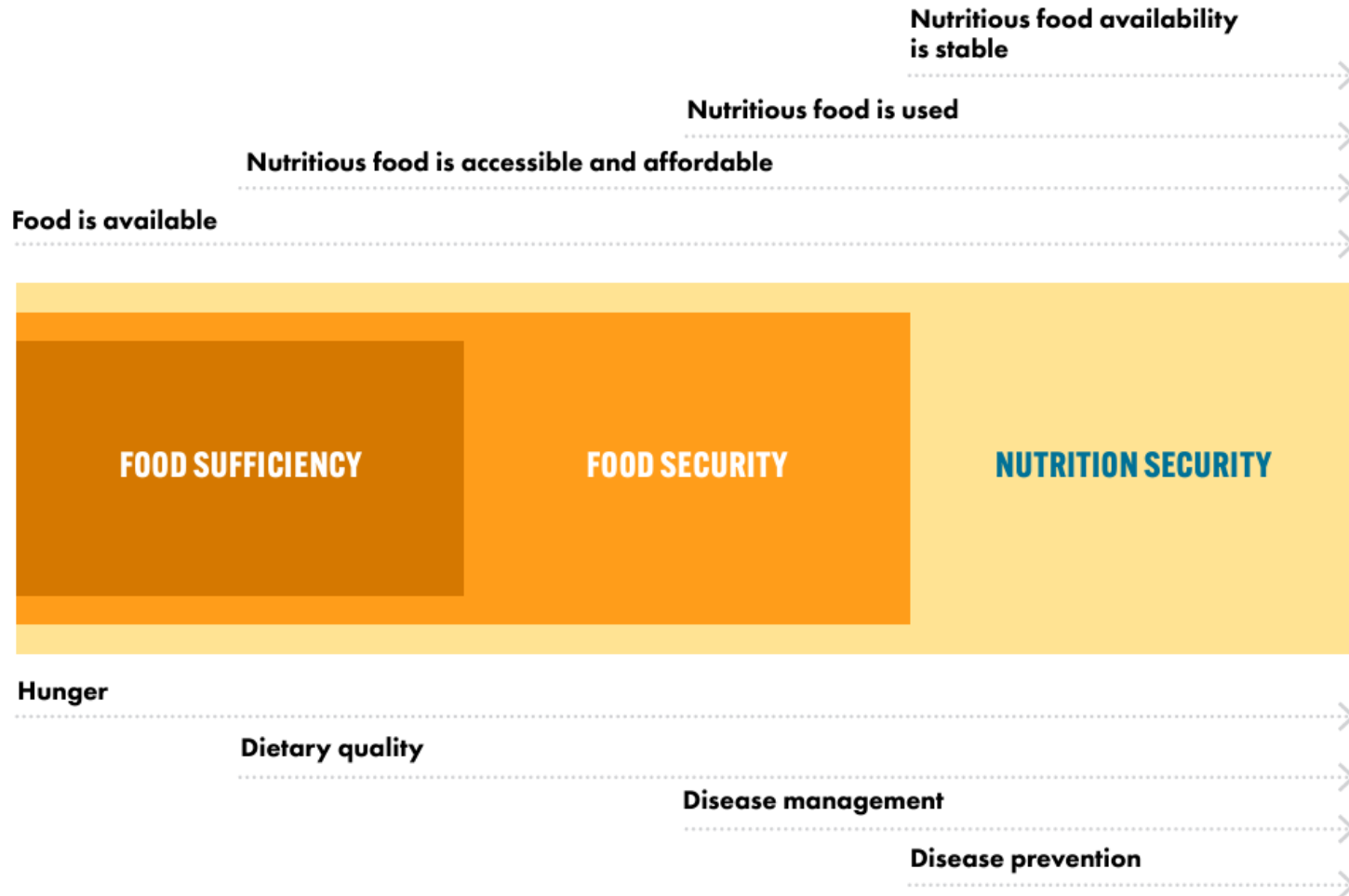
Informing Policy. Improving Health.

# USAID Food Systems Conceptual Framework



Source: United States Agency for International Development (USAID) Bureau for Resilience and Food Security (RFS) Food Systems Conceptual Framework, July 2021.

# Definitions and Outcomes



Source: Mozaffarian (2023).



# Food Insufficiency

## Sometimes **or** often not enough to eat

Food Insufficiency for Kansas Adults in the Last Seven Days by Presence of Children in the Household, 2023

POPULATION GROUP	POPULATION ESTIMATION (Age 18+)	SOMETIMES NOT ENOUGH TO EAT	OFTEN NOT ENOUGH TO EAT	SOMETIMES OR OFTEN NOT ENOUGH TO EAT
All Adults, Age 18+	2,171,506	8.4%	3.0%	11.3%
Adults in Households with Children	807,363	11.3%	1.2%	12.5%
Adults in Households Without Children	1,364,143	6.6%	4.0%	10.6%

Source: Kansas Health Institute analysis of U.S. Census Bureau Household Pulse Survey Data, Sept. 20–Oct. 2, 2023.



# Food Insufficiency

## Food Insufficiency for Kansas Adults in the Last Seven Days by Difficulty Walking or Climbing Stairs, 2023

DIFFICULTY WALKING OR CLIMBING STAIRS	POPULATION ESTIMATION (Age 18+)	SOMETIMES NOT ENOUGH TO EAT	OFTEN NOT ENOUGH TO EAT	SOMETIMES OR OFTEN NOT ENOUGH TO EAT
No Difficulty	1,266,412	7.1%	2.3%	9.4%
Some Difficulty	406,535	11.6%	5.2%	16.8%
<b>A Lot of Difficulty</b>	<b>84,184</b>	<b>22.7%</b>	<b>12.4%</b>	<b>35.0%</b>
Cannot Do at All	11,662	-	5.7%	5.7%
Did Not Report	402,712	6.3%	0.7%	7.0%

Source: Kansas Health Institute analysis of U.S. Census Bureau Household Pulse Survey Data, Sept. 20–Oct. 2, 2023.



# Food Insecurity

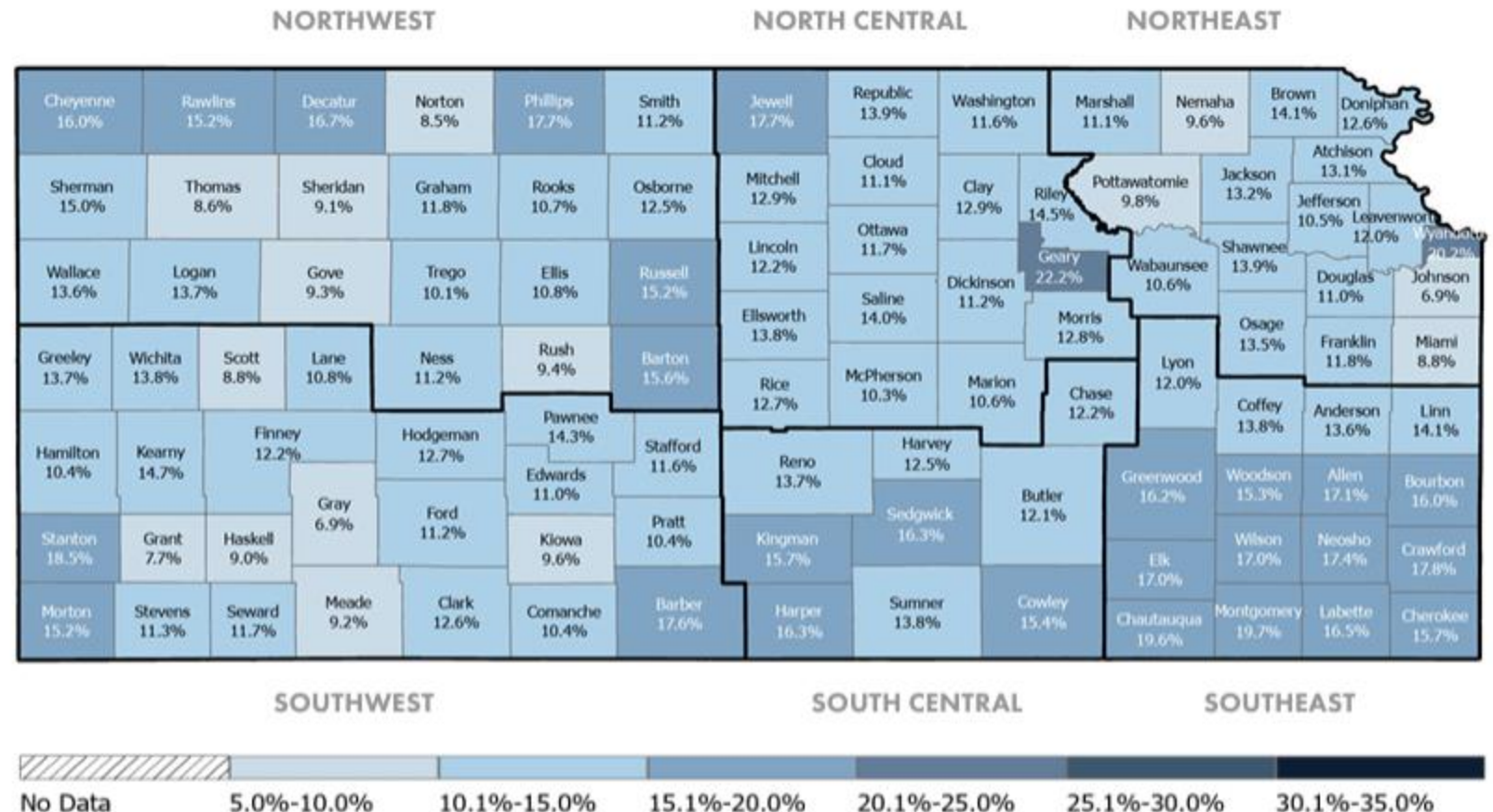
## Food Insecurity Among Children Age <18 in Kansas by County, 2021

### Kansas, 2021

- Overall: 9.9%
- Child: 13.4%

### Kansas, 2022

- Overall: 13.1%
- Child: 19.1%



Source: Feeding America, 2021.

# Meet the Panel



KANSAS HEALTH INSTITUTE

*Informing Policy. Improving Health*

[khi.org](http://khi.org)

# Panelists

---



**Donna Pearson McClish, M.Ed.**  
*Founder/CEO,  
Common Ground Producers  
and Growers, Inc.*



**Haley Kottler**  
*Campaign Director,  
Kansas Appleseed*



**Ken Regier**  
*Director of Operations,  
Kansas Food Bank*



**Matt Burchett, Ph.D.**  
*Senior Vice President –  
Strategy & Social Impact,  
Thrive Restaurant Group*





# Closing Remarks




KANSAS HEALTH INSTITUTE

*Informing Policy. Improving Health*

[khi.org](http://khi.org)

# Stay Informed




**FEB. 25, 2025**

**Bring It!**

**Hunger in Kansas**

On Feb. 25, KHI featured a panel of experts from policy, charitable, agriculture and business sectors, who discussed hunger in Kansas. Participants examined the challenges of addressing food insecurity, discussed innovative strategies and identified opportunities to improve access to adequate nutrition for Kansans. This guide includes key resources from the event, discussion questions for further reflection and ways to stay connected as we continue to explore hunger and food insecurity.

 Watch the recording here

### Resources

Read *Hunger Free Kansas: Environmental Scan of Secondary Data* to explore key insights on food security in Kansas.

[REVIEW KEY FINDINGS >](#)

Explore the issue brief, *Kansas Food Sales Tax: Exploring Policy and Research* to understand the impact of food sales tax policy.

[ACCESS THE BRIEF >](#)

Learn more about the work of our panelists and their efforts to address food insecurity in Kansas.

COMMON GROUND PRODUCERS AND GROWERS, INC.	KANSAS APPLESEED
KANSAS FOOD BANK	THRIVE RESTAURANT GROUP

### Discussion Questions

- How can you use the data shared about hunger and food insecurity to inform decisions, policies or initiatives in your community?
- What innovative strategies to address hunger could you experiment with in your community?

### Stay Connected!

Visit [khi.org](http://khi.org) to explore more resources on health and policy.

Follow us on social media @KHIorg.

Register for [upcoming events](#).

Have questions? Reach out at [info@khi.org](mailto:info@khi.org)—we'd love to hear from you!

Access your  
Resource Guide  
in the chat!



# We Value Your Feedback!

---



 [bit.ly/41elblr](https://bit.ly/41elblr)



# Connect With Us

---



KANSAS HEALTH INSTITUTE

*Informing Policy. Improving Health*

**khi.org**



212 SW 8<sup>th</sup> Avenue | Topeka, KS | 785.233.5443