



Age-Friendly Kansas

Advisory Committee – Age-Friendly Community and Neighborhood Development

November 21, 2024

Vision for an Age-Friendly Kansas

The Age-Friendly Kansas initiative hopes to transform collected insights across the state into system-level improvements that enhance the health and quality of life for all aging Kansans.

To achieve this, we will bring together stakeholders, resources, research and expertise to create a statewide action plan that goes beyond raising awareness and drives real change toward making Kansas a more age-friendly state.

Catch Up on Meetings: Age-Friendly Kansas Landing Page



KANSAS HEALTH INSTITUTE
Informing Policy, Improving Health.

Topics

Services

About

Policy & Research

Events

Newsroom

Contact



Commitment to Healthy Aging

Age-Friendly Kansas

As the demographics of our population continue to shift, Kansas has the opportunity to elevate healthy aging as a core public health function. **Age-Friendly Kansas is a new statewide initiative** designed to unite aging and public health professionals to identify and embed healthy aging practices and age-friendly principles throughout Kansas communities, systems and sectors to improve the health and well-being of aging Kansans.

Link to AFK Landing Page: <https://www.khi.org/topics/age-friendly-kansas/>



Looking Ahead - Meeting Schedule and Topics

Thursday from 1 - 2:15 p.m.

Last 2024 Meeting: Dec. 19, 2024

Please attend meeting to contribute to planning workgroup and quarterly meetings for 2025.

Advisory committee members will be able to meet other workgroup members, inform workgroup structure and meeting frequency.

Complete before December: Working Group Sign-Up

Sign-up for Topics of Interest to:

- Learn from each other
- Inform and develop actionable strategies for the AFK Action Plan

Steering committee will assist with:

- Providing templates and tools to work through topics and strategies
- Setting up working group format (ex. meeting invitations, Teams channel, providing research, Google Drive folder and templates)



Discussion - Compiling and Adapting New Knowledge

During presentations, keep in mind the following questions for workgroups:

- How can this information inform strategies?
- How can programs, services and the current system be adapted to be more age-friendly?
- What information is still missing?
- **Of our list of draft strategies, which ones should we prioritize?**
- **What strategies are actionable?**

Presentations:

- **Shauneequa Owusu**, Chief Strategy Office, Changelab Solutions
- **Tina Ansong**, Senior Planner, Changelab Solutions
- **Lisse Regehr**, President and CEO, Thrive Allen County

Discussion: Please contribute your thought and ideas for Age-Friendly Communities in Kansas

Strategy Domains

Domains	
1.	Public Health Initiatives
2.	Transportation
3.	Housing
4.	Healthcare Access and Services
5.	Community and Neighborhood Development
6.	Systems and Collaboration
7.	Workforce Development
8.	Education and Training
9.	Health and Wellness
-	Cross-Cutting Principles: Prevent Social Isolation, Support Aging in Place, Support Financial Planning



The
John A. Hartford
Foundation



Using Planning Resources to Advance Age Friendly Goals



We will start at 1 pm CDT.

Healthier Communities For All Through Equitable Laws And Policies.

Speakers



Shauneequa Owusu

Chief Strategy Officer
Changelab Solutions



Tina Ansong

Senior Planner
Changelab Solutions

DISCLAIMER

- The information provided in this discussion is for informational purposes only, and does not constitute legal advice. ChangeLab Solutions does not enter into attorney-client relationships.
- ChangeLab Solutions is a non-partisan, nonprofit organization that educates and informs the public through objective, non-partisan analysis, study, and/or research. The primary purpose of this discussion is to address legal and/or policy options to improve public health. There is no intent to reflect a view on specific legislation.
- ©2021 ChangeLab Solutions



Our mission

Healthier communities
for all through equitable
laws & policies.



Rooted in our values, our **core strategies** use the tools of law & policy to advance health equity.



Demystifying law and policy



Connecting across sectors



Strengthening the leadership, skills, & capacity of changemakers

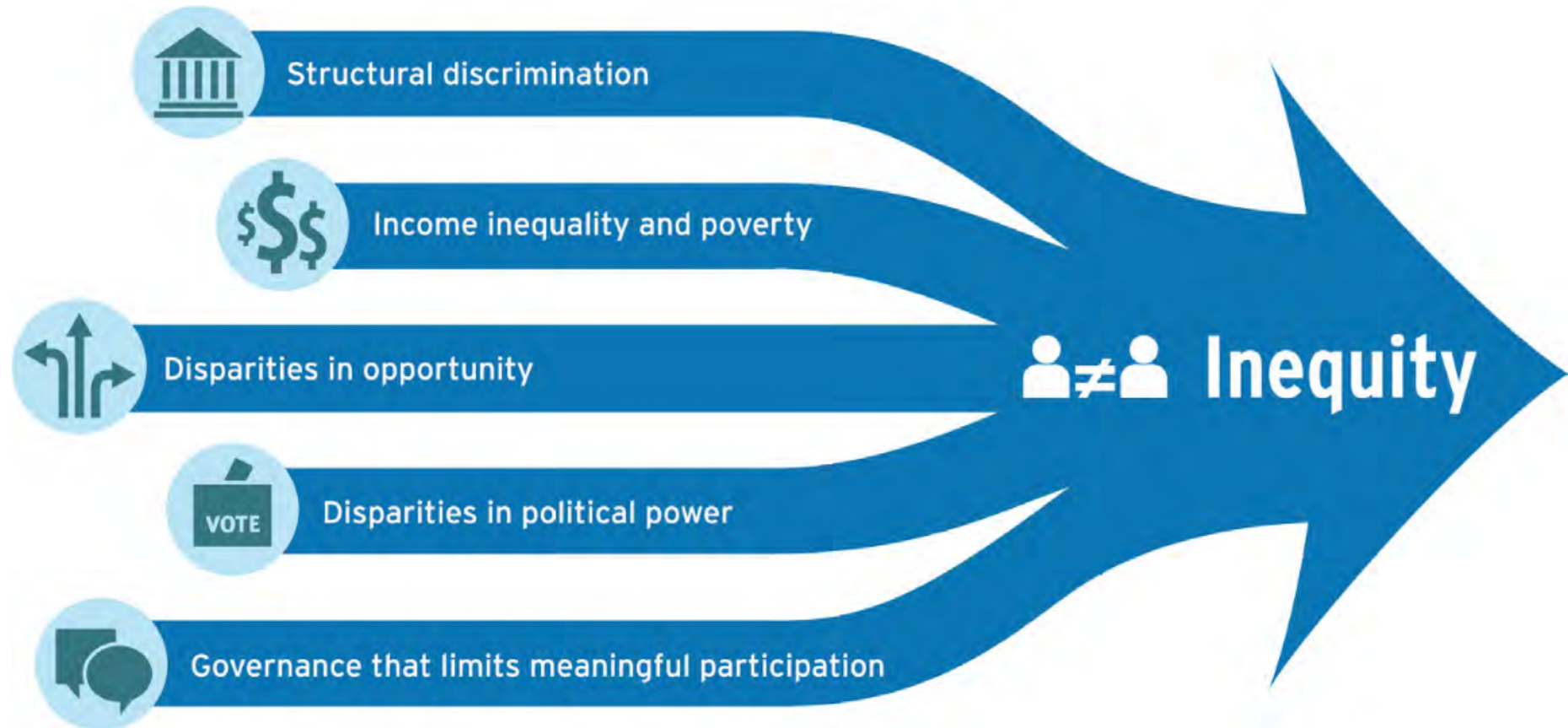


Developing policy and legal tools with an interdisciplinary lens



Elevating practical, evidence-based, and community-centered tools, solutions, and successes

The Fundamental Drivers of Inequity



Source: ChangeLab Solutions' A Blueprint for Changemakers:
Achieving Health Equity Through Law & Policy

Agenda

- Introduction to how planning impacts healthy aging
- ChangeLab Resources focused on community planning solutions for healthy and equitable aging



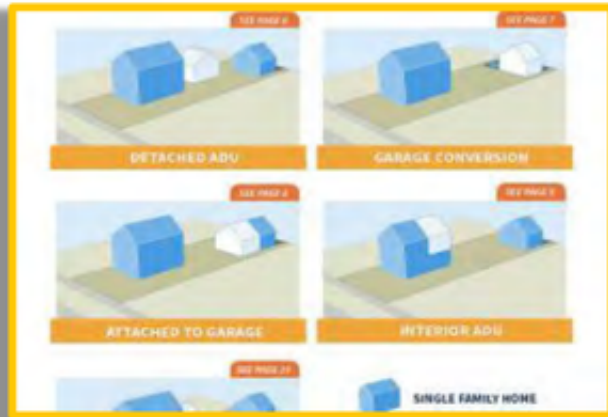


HOW PLANNING IMPACTS HEALTHY AGING



ChangeLab Solutions

Physical Elements of the Domains of Livability



Emergency Preparedness
for adults
is why
ment-a-friendly
MAPS
SUPPORTS
SUPPORTS

Planning for Healthy, Equitable Communities

Most things that we experience every day in our communities are the result of planning decisions.



ELEMENTS OF COMMUNITIES	HOUSING	TRANSPORTATION	PARKS & OPEN SPACE	EDUCATION	FOOD
PLANNING PRACTICES & POLICIES THAT HARM HEALTH Planning practices often benefit some communities while burdening others. The differences can be stratified by income and race/ethnicity.	Discriminatory housing policies lead to residential segregation, insufficient affordable housing, and poorly maintained housing.	Auto-oriented planning leads to over-reliance on cars for travel and neighborhoods that lack infrastructure for walking, biking, or public transit.	Inequities in budgeting lead to neighborhoods with poor access to safe and well-maintained parks, playgrounds, and open spaces.	Policies perpetuating residential segregation lead to under-resourced schools, and neighborhood designs (eg, poor walkability) isolate school communities.	Land use decisions create poor access to affordable, nutritious foods.
PLANNING PRACTICES & POLICIES THAT IMPROVE HEALTH Planners and public health practitioners can remedy past harms through equity-forward planning practices, authentic and inclusive community engagement, and cross-sector collaboration.	Plan mixed-income neighborhoods by preserving, protecting, and expanding affordable housing.	Invest in multimodal transportation networks to serve neighborhoods that historically have lacked capital investment.	Increase access and availability of high-quality parks, playgrounds, and open spaces, especially in underserved neighborhoods.	Design school neighborhoods that include safe, walkable access to schools and connect to key community resources.	Plan for and incentivize access to healthy and affordable foods in areas that have historically lacked access.

Types of Inequity



Distributional inequity:

Unfair distribution of resources, burdens, & benefits



Procedural inequity:

Unfair decision-making



Structural inequity:

Unfair governmental or institutional systems



How Planning Inequity Impacts Livability and Health Aging

- Lack of Housing Choice (Type and price point)
- Car dependent design
- Lack of pedestrian infrastructure (sidewalks and crosswalks)
- Separate land uses
- Lack of public gathering spaces





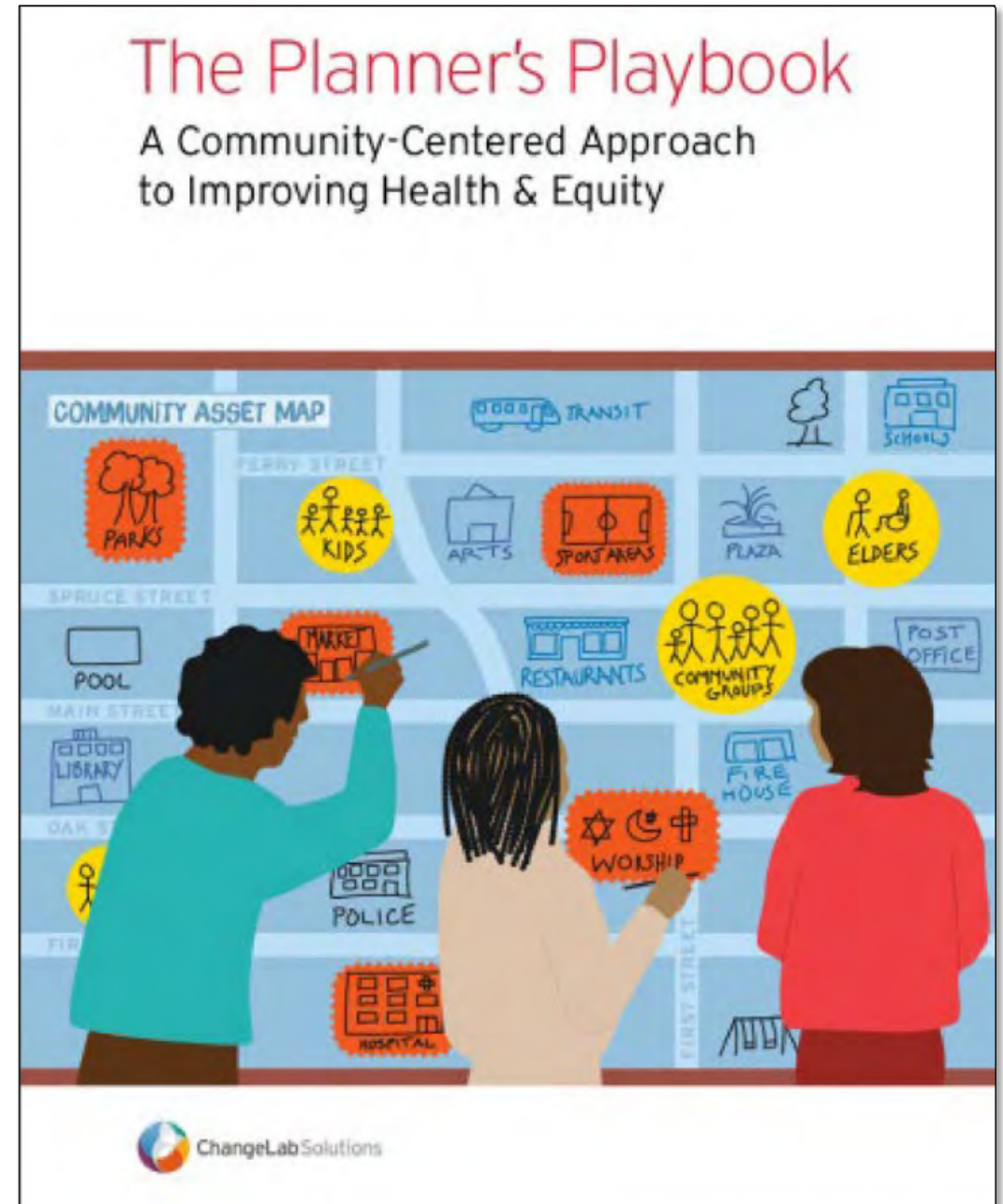
CHANGELAB RESOURCES



ChangeLab Solutions

Planner's Playbook

- Address inequities in planning systems and processes by:
 1. **Focusing on inclusive community engagement and**
 2. **Fostering long term relationships and partnerships**

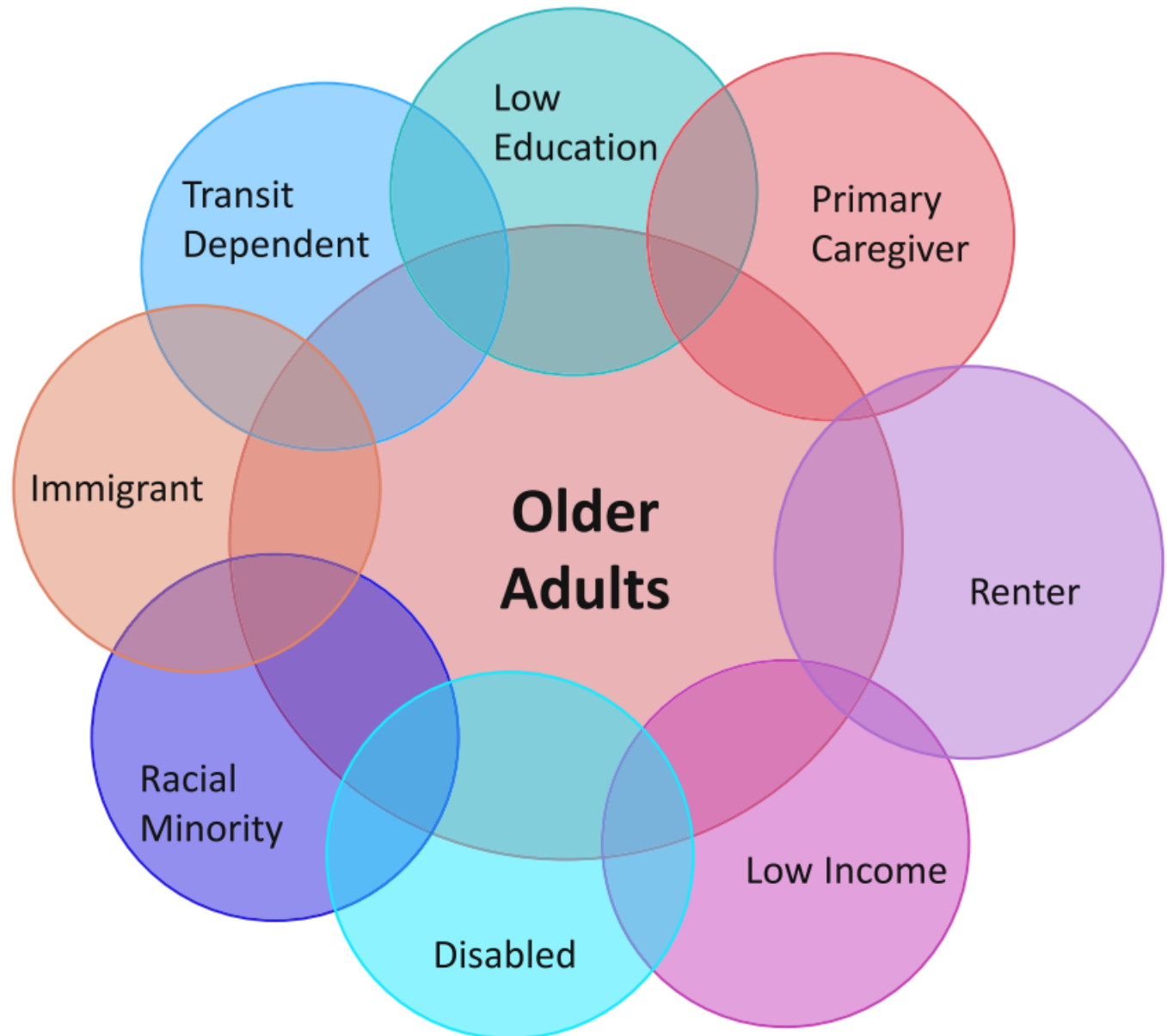


Barriers to Participation

- Language
- Employment Obligations
- Familial Obligations
- Accessibility
- Value of time
- Transportation
- Literacy
- Technology



Intersectionality



Build Partnerships With Community Based Organizations and Leaders

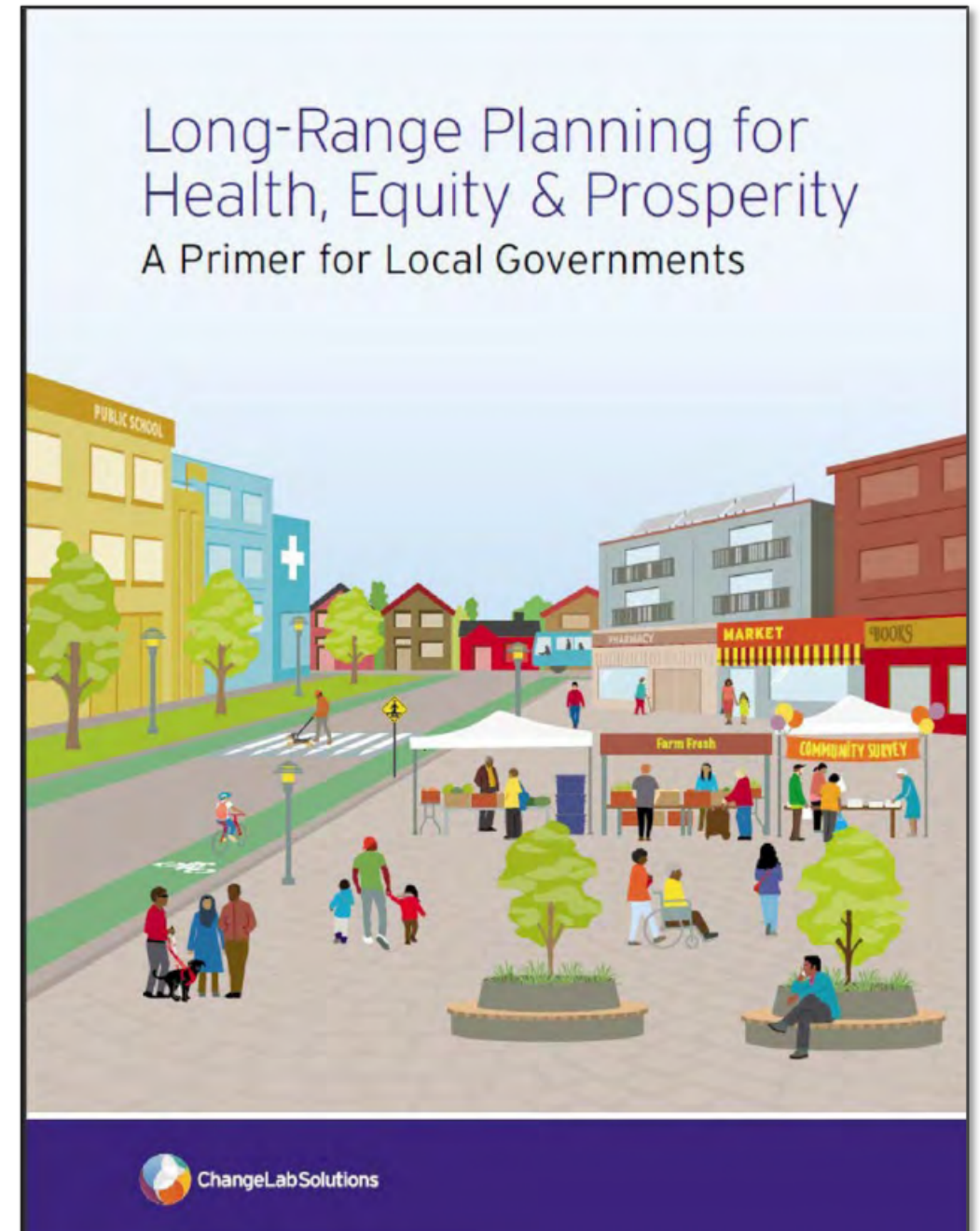


- Provide historical, cultural, technical and geographical expertise
- Anticipate Inequitable outcomes
- Persuade citizens to participate and attend engagement events
- Provide additional support through co-hosting or facilitating
- Provide insight into issues not currently on the radar
- Ensure communications are suitable and understandable for the intended audience.

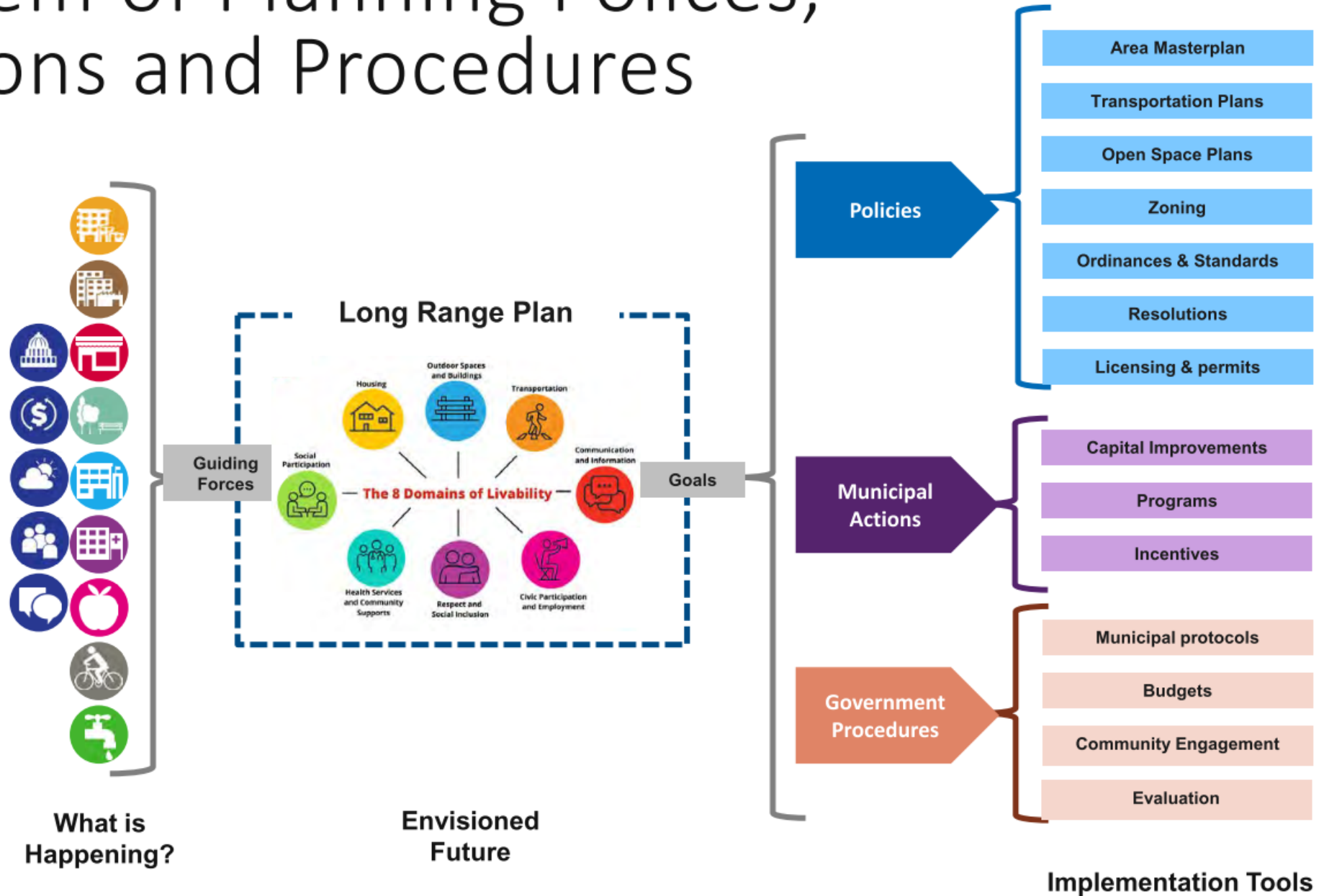
Planning Primer

Using Planning Frameworks to reduce health equities by:

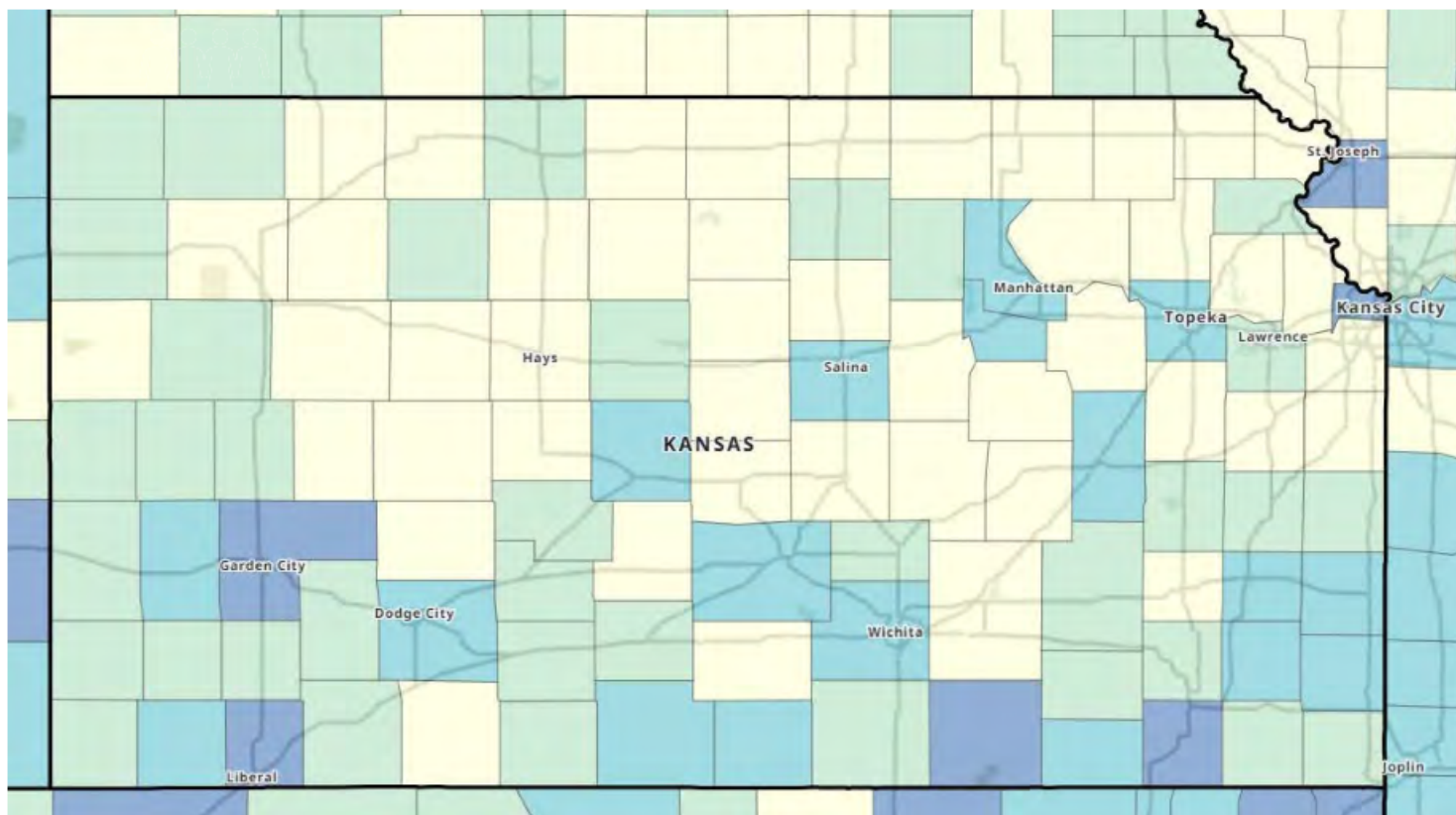
- **Use long range plans to coordinate and institutionalize cross sector collaboration to achieve health equity and prosperity.**
- **Use place-based analyses to identify priority neighborhoods and address the needs of priority populations.**



System of Planning Policies, Actions and Procedures



Identifying Priority Populations



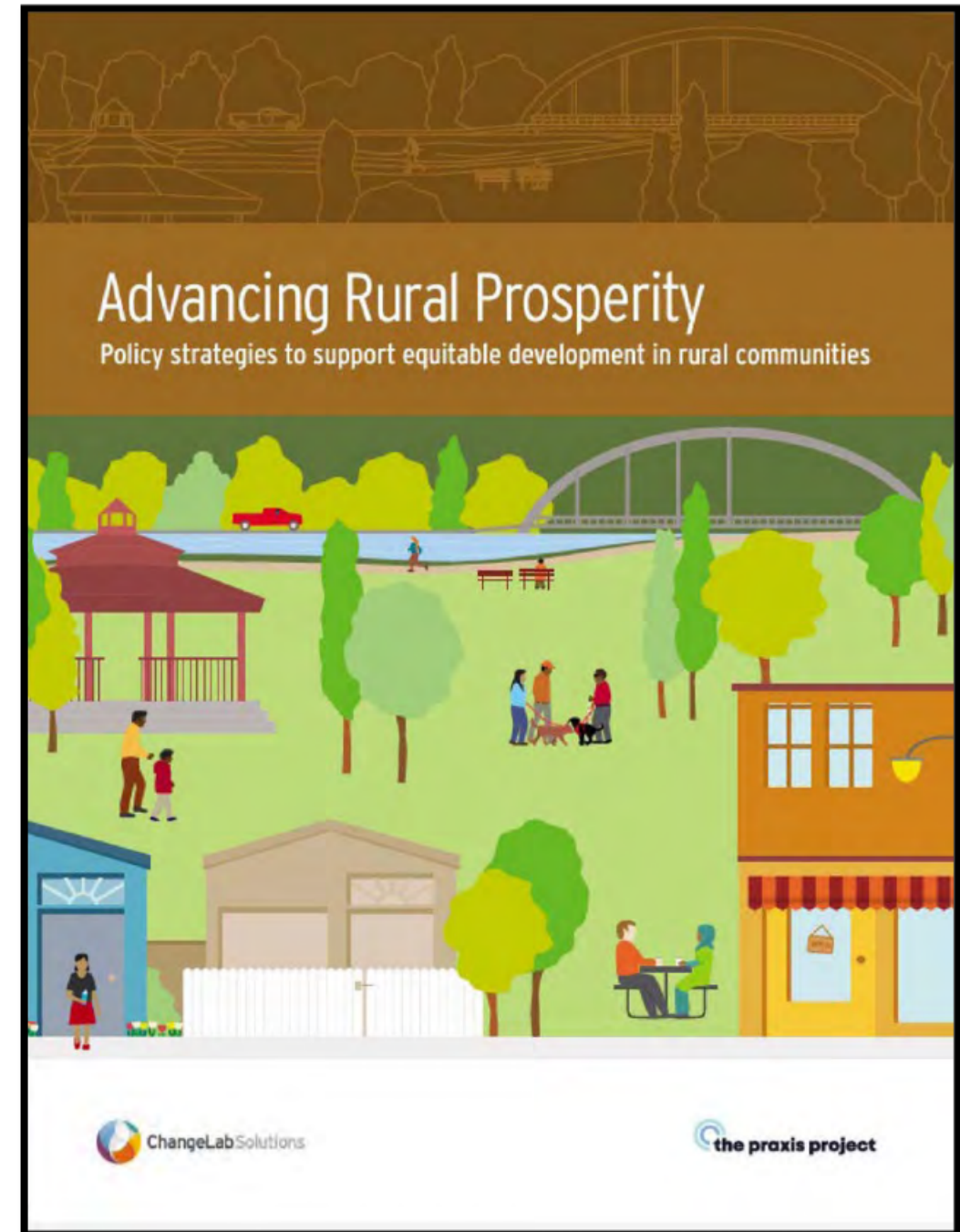
Socioeconomic Status	Below Poverty
	Unemployed
	Income
	No High School Diploma
Household Composition & Disability	Aged 65 or Older
	Aged 17 or Younger
	Older than Age 5 with a Disability
	Single-Parent Households
Minority Status & Language	Minority
	Speak English "Less than Well"
Housing & Transportation	Multi-Unit Structures
	Mobile Homes
	Crowding
	No Vehicle
	Group Quarters

Source: CDC Social Vulnerability Index



Advancing Rural Prosperity

- **Identify development challenges and opportunities unique to rural America.**
- **Investing in the people of rural America.**
- **Investing in rural infrastructure.**



Challenges

- Shortages of Essential Services
- Housing Limitations
- Isolation
- Food Insecurity
- Climate Change
- Disinvestment
- Broadband Internet

Opportunities

- Arts and Culture
- Recreational Opportunities
- Growth in Remote Work



Rural Investments that Support Healthy Aging

- Health Care

- Medicaid Expansion
- Telemedicine

- Housing

- Inclusionary Zoning policies
- Property tax abatements for people on a fixed income
- Expedited permitting for affordable housing
- Rent subsidies
- Emergency rental and utility assistance programs

- Infrastructure

- Broadband expansion through 1) Supports for E-Rate program application and 2) Incentives through Universal Service Funds.
- Investments in multimodal transportation options

- Tourism and Recreation

- Visitor Centers
- Identify funding partners and local champions
- Recruit outdoor focused businesses
- Invest in destination branding and marketing

Policy Primers for Housing Equity

- Strategies to Increase Housing Production
 - Zoning and Land Use Changes
- Tax Incentives to Encourage Affordable Housing Production
 - Property tax relief for fixed income homeowners
- Emergency Rental and Utility Assistance
- Local Anti Displacement Strategies
 - Tenant protections
 - Affordable housing requirements



AARP Mississippi LCTAP Program

- Used our Planning Primer resource to better understand how to use public health frameworks to advance the age friendly ecosystem:
 - Connect the 6Cs framework to planning roles
- Tailored equity messaging
- Utilizing tools such as power mapping for coalition and partnership building.

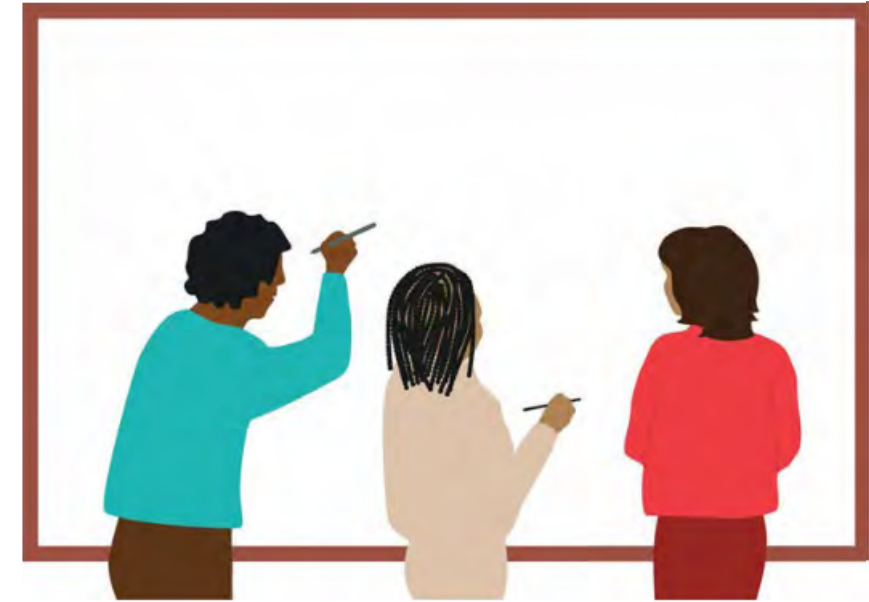


Source: Trust for America's Health

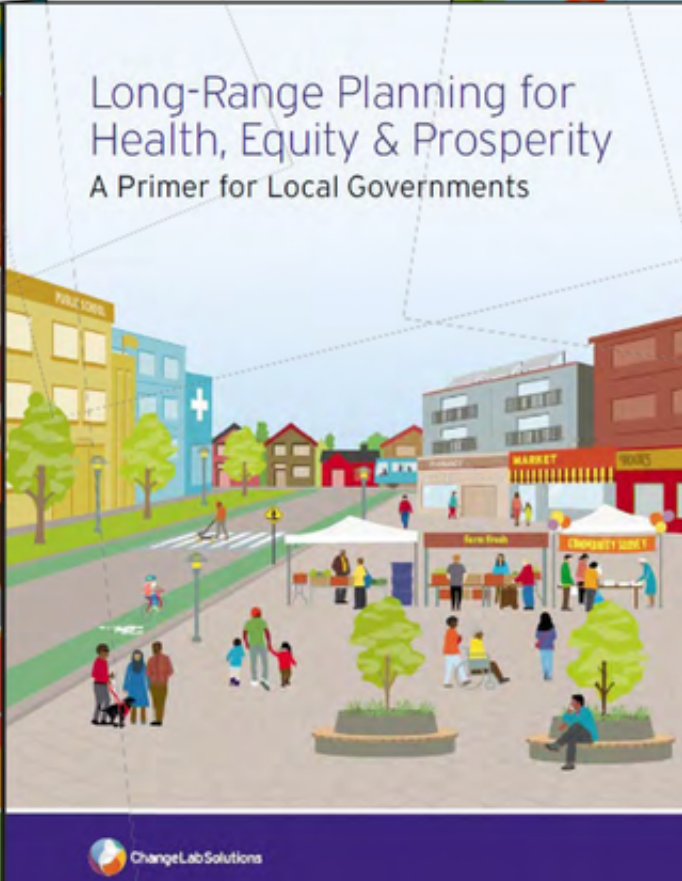
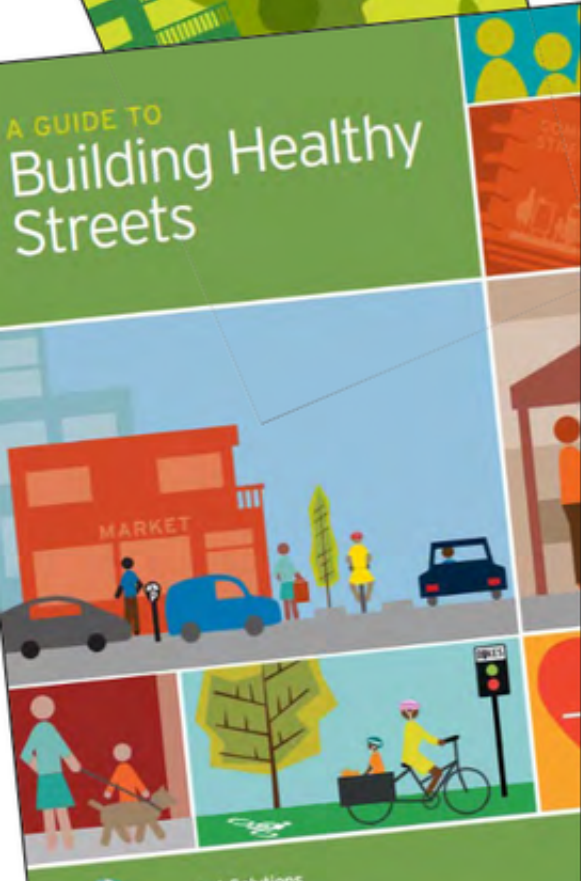
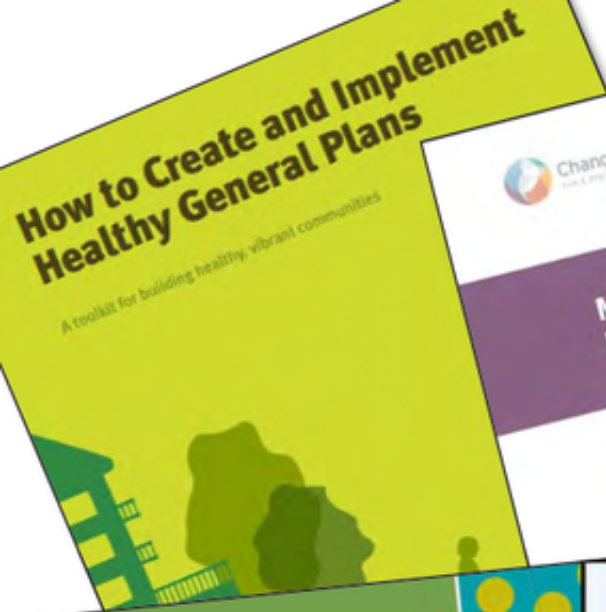
AARP Virginia LCTAP Program

Used our Planning Primer and Planner's playbook resources to:

- Identify which drivers of inequity are at play in their communities
- Understand how to leverage policies, actions and procedures to address inequities:
 - Community engagement
 - Capacity building with partnerships
 - Elements of establishing and rebuilding trust



American Association of Retired Persons (AARP)
Livable Communities Technical Assistance Program (LCTAP)





Open up to Questions

THANK YOU!



Website

changelabsolutions.org



Twitter

[@ChangeLabWorks](https://twitter.com/ChangeLabWorks)



Email

info@changelabsolutions.org



**Lisse Regehr,
President and
CEO**

Age-Friendly Community Development Initiatives

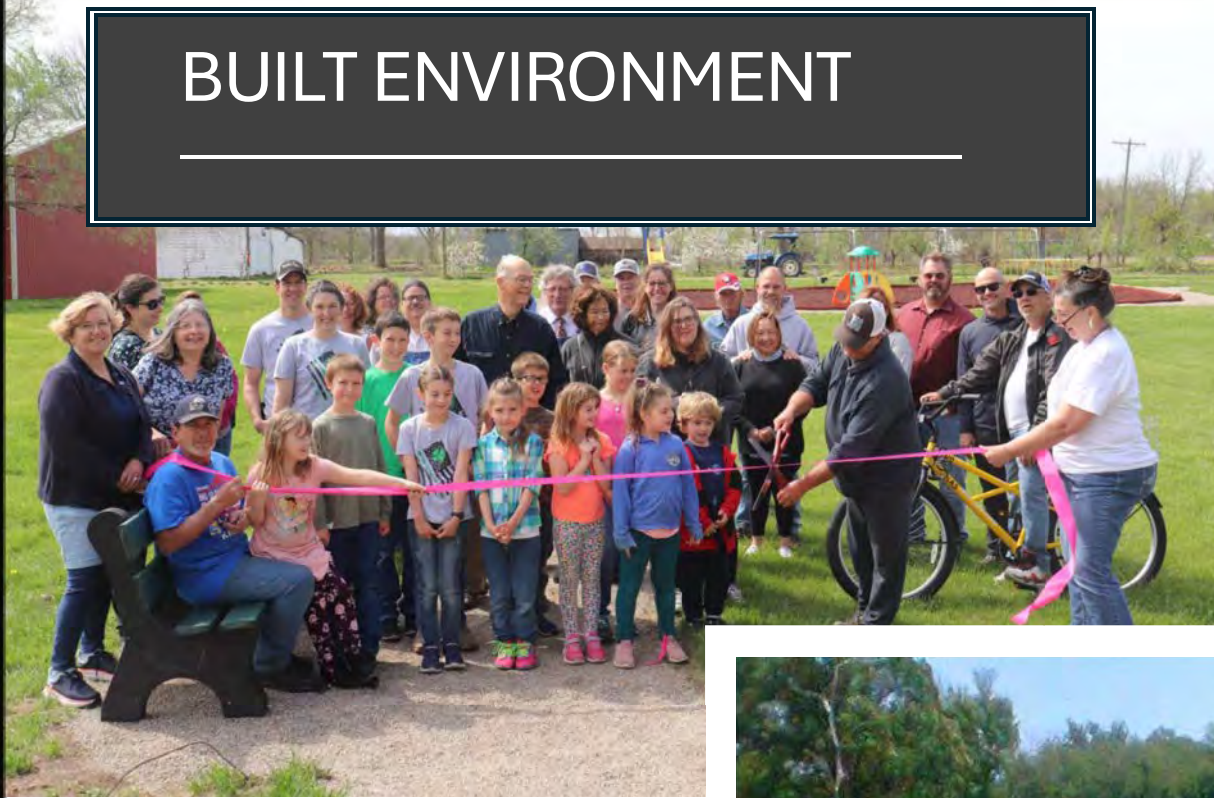
Age-Friendly Kansas Advisory Committee

November 21, 2024

THRIVE ALLEN COUNTY

- 501(c)(3) organization established 2007
- 26 team members and 3 interns
- Health/Wellness, Recreation, Education, Advocacy and Economic Development
- VISION: Allen County (pop. 12,500) will be the healthiest rural county in Kansas.

BUILT ENVIRONMENT

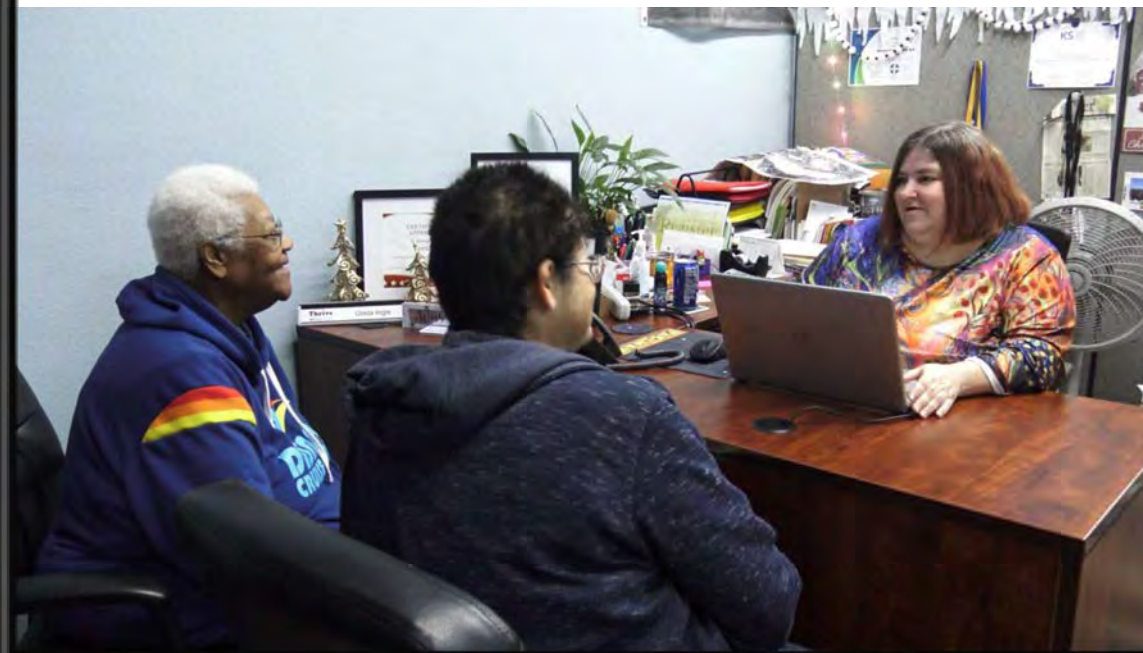


TRANSPORTATION





HOUSING



CARE COORDINATION



COMMUNITY CONVERSATIONS





Thank You!

Lisse Regehr
Thrive Allen County
9 S Jefferson
Iola, Kansas 66749

lisse@thriveallencounty.org

www.thriveallencounty.org



Thrive Allen County



Thrive Kansas



thriveallen

What information presented today resonated with you the most?

What opportunities should we leverage or seek to expand on?



Contact Me

Emma Uridge, M.P.H.

Analyst

Kansas Health Institute

 euridge@khi.org



Connect With Us



www.khi.org

@KHIorg



212 SW 8th Avenue | Topeka, KS | 785.233.5443