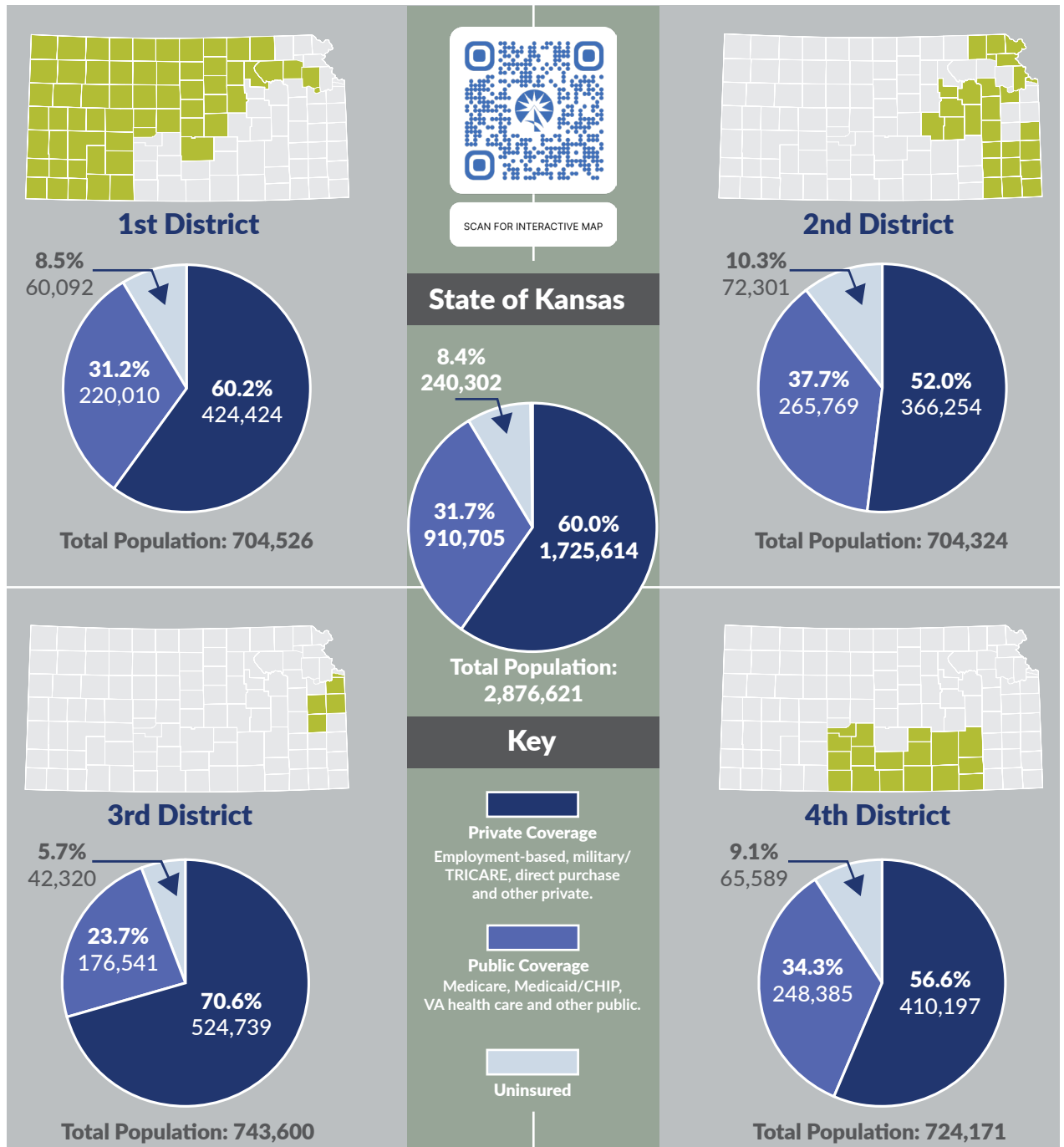




INSURANCE COVERAGE BY KANSAS CONGRESSIONAL DISTRICT

Using data from the U.S. Census Bureau, this fact sheet details health insurance coverage for Kansans in 2023 by congressional district (Figure 1) as well as by age group (Figure 2, page 2).

Figure 1. Health Insurance Coverage by Congressional District, 2023



Note: Civilian non-institutionalized Kansas residents = 2,876,621. Estimates are for residents within the congressional district boundaries of the 118th Congress, which are in effect from Jan. 3, 2023–Jan. 3, 2025. Percentages may not sum to 100 percent due to rounding. Margins of error for combined population subgroups are not available, so statistical tests for significant differences cannot be conducted. Because American Community Survey respondents can report more than one type of insurance, KHI utilizes a standard hierarchy of public insurance, private insurance and then uninsured.

Source: Kansas Health Institute analysis of data from the U.S. Census Bureau 2023 1-year American Community Survey table B27010, available at data.census.gov/table/ACSDT1Y2023.B27010?q=B27010

Figure 2. Health Insurance Coverage by Age and Congressional District, 2023

2023	Total Population	Private Coverage		Public Coverage		Uninsured	
		Number	Percentage	Number	Percentage	Number	Percentage
Kansas Overall	2,876,621	1,725,614	60.0%	910,705	31.7%	240,302	8.4%
Children, Age 0-18	726,154	455,372	62.7%	230,233	31.7%	40,549	5.6%
Adults, Age 19-64	1,650,054	1,251,872	75.9%	202,471	12.3%	195,711	11.9%
Adults, Age 65+	500,413	18,370	3.7%	478,001	95.5%	4,042	0.8%
1st District	704,526	424,424	60.2%	220,010	31.2%	60,092	8.5%
Children, Age 0-18	172,134	106,361	61.8%	55,367	32.2%	10,406	6.0%
Adults, Age 19-64	408,197	314,065	76.9%	45,192	11.1%	48,940	12.0%
Adults, Age 65+	124,195	3,998	3.2%	119,451	96.2%	746	0.6%
2nd District	704,324	366,254	52.0%	265,769	37.7%	72,301	10.3%
Children, Age 0-18	179,455	98,333	54.8%	68,541	38.2%	12,581	7.0%
Adults, Age 19-64	391,920	263,970	67.4%	69,376	17.7%	58,574	14.9%
Adults, Age 65+	132,949	3,951	3.0%	127,852	96.2%	1,146	0.9%
3rd District	743,600	524,739	70.6%	176,541	23.7%	42,320	5.7%
Children, Age 0-18	185,126	144,221	77.9%	33,998	18.4%	6,907	3.7%
Adults, Age 19-64	439,412	374,025	85.1%	30,558	7.0%	34,829	7.9%
Adults, Age 65+	119,062	6,493	5.5%	111,985	94.1%	584	0.5%
4th District	724,171	410,197	56.6%	248,385	34.3%	65,589	9.1%
Children, Age 0-18	189,439	106,457	56.2%	72,327	38.2%	10,655	5.6%
Adults, Age 19-64	410,525	299,812	73.0%	57,345	14.0%	53,368	13.0%
Adults, Age 65+	124,207	3,928	3.2%	118,713	95.6%	1,566	1.3%

Note: Civilian non-institutionalized Kansas residents = 2,876,621. Estimates are for residents within the congressional district boundaries of the 118th Congress, which are in effect from Jan. 3, 2023-Jan. 3, 2025. Percentages may not sum to 100 percent due to rounding. Margins of error for combined population subgroups are not available, so statistical tests for significant differences cannot be conducted. Because American Community Survey respondents can report more than one type of insurance, KHI utilizes a standard hierarchy of public insurance, private insurance and then uninsured.

Source: Kansas Health Institute analysis of data from the U.S. Census Bureau 2023 1-year American Community Survey table B27010, available at data.census.gov/table/ACSDT1Y2023.B27010?q=B2701

ABOUT THE FACT SHEET

This brief is based on work by Angela S Wu, M.S., Kaci Cink, M.P.H., Viktoria Sterkhova, M.P.H. and Wen-Chieh Lin, Ph.D. It is available online atkhi.org/articles/insurance-coverage-by-kansas-congressional-district-2024.

KANSAS HEALTH INSTITUTE

The Kansas Health Institute supports effective policymaking through nonpartisan research, education and engagement. KHI believes evidence-based information, objective analysis and civil dialogue enable policy leaders to be champions for a healthier Kansas. Established in 1995 with a multiyear grant from the Kansas Health Foundation, KHI is a nonprofit, nonpartisan educational organization based in Topeka.

Copyright © Kansas Health Institute 2024. Materials may be reprinted with written permission. Reference publication number KHI/24-82.

212 SW 8th Avenue | Suite 300
Topeka, Kansas | 66603-3936

785.233.5443

khi.org

/KHIorg

@KHIorg

KHIorg