



# Age-Friendly Kansas Advisory Committee

*August 15, 2024*



# Discussion Items

---

- Introduce members
- Review expectations and time commitment
- Discuss deliverables
- Discuss AFPHS Model – what is the public health system in Kansas? What could it be?
- ***Discuss Insights from Application and Registration***

# Hello!

---

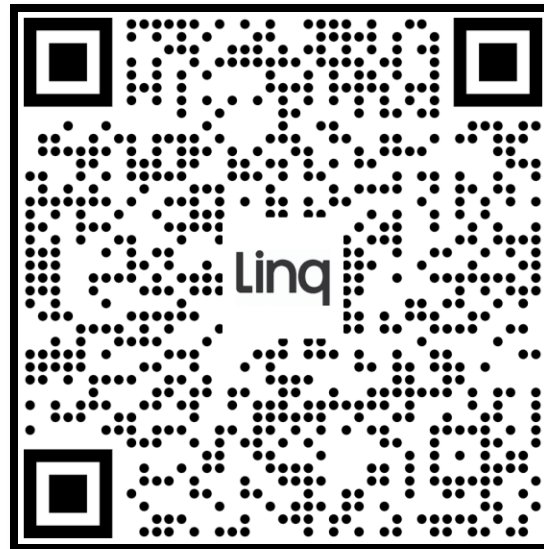
**Emma Uridge, M.P.H.**

*Analyst*

Kansas Health Institute



euridge@khi.org



# Meet our State Partners and Steering Committee Members



**David Anderson**

*Commissioner,  
Aging Services  
Commission,  
Kansas Department  
for Aging and  
Disability Services*



**Derik Flerlage**

*Co-Bureau  
Director of Family  
Health, Kansas  
Department of  
Health and  
Environment*



**Chanda Gross**

*Research  
Analyst, Division  
of Healthcare  
Finance, Kansas  
Department of  
Health and  
Environment*



**Chrisy Khatib**

*Deputy Director,  
Adult Protective  
Services,  
Department for  
Children and  
Families*



**Lainey Faulkner**

*Director, Bureau  
of Health  
Promotion and  
Public Health  
Medicaid Liaison,  
Kansas  
Department of  
Health and  
Environment*



**Julie Sergeant**

*Section Director,  
Kansas Behavioral  
Risk Factor  
Surveillance  
System, Kansas  
Department of  
Health and  
Environment*



**Yvonne Case**

*Director of  
Operations: Medicaid  
Division of Health  
Care Finance,  
Kansas Department  
of Health and  
Environment*

# Hello!

---

## **Kari Bruffett**

*President and CEO*  
Kansas Health Institute

 kbruffet@khi.org





# Who We Are

---



- Nonprofit, nonpartisan educational organization based in Topeka.
- Established in 1995 with a multi-year grant by the Kansas Health Foundation
- Committed to convening meaningful conversations around tough topics related to health

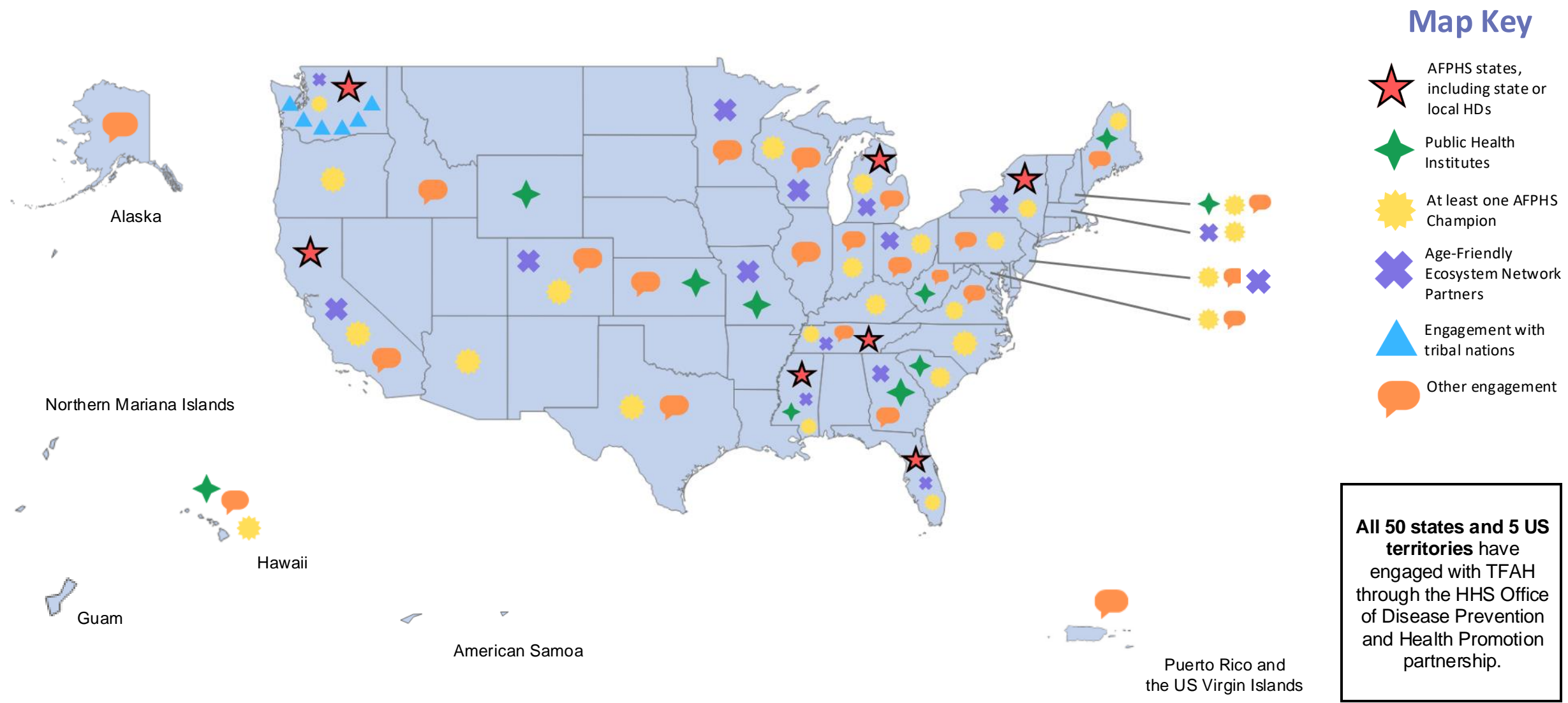
# KHI Part of AFPHS Phase III (April 2023-March 2026)

---



- TFAH is engaging with Public Health Institutes: piloting capacity building program, leading to development of statewide AFPHS plans
- Expand engagement at federal level
- Expand age-friendly ecosystem development nationally and within states and communities
- **Expand the AFPHS Recognition Program to acknowledge healthy aging commitments in additional public health entities**
- Develop elder mistreatment prevention guidance for public health

# AFPHS Engagement Across the United States



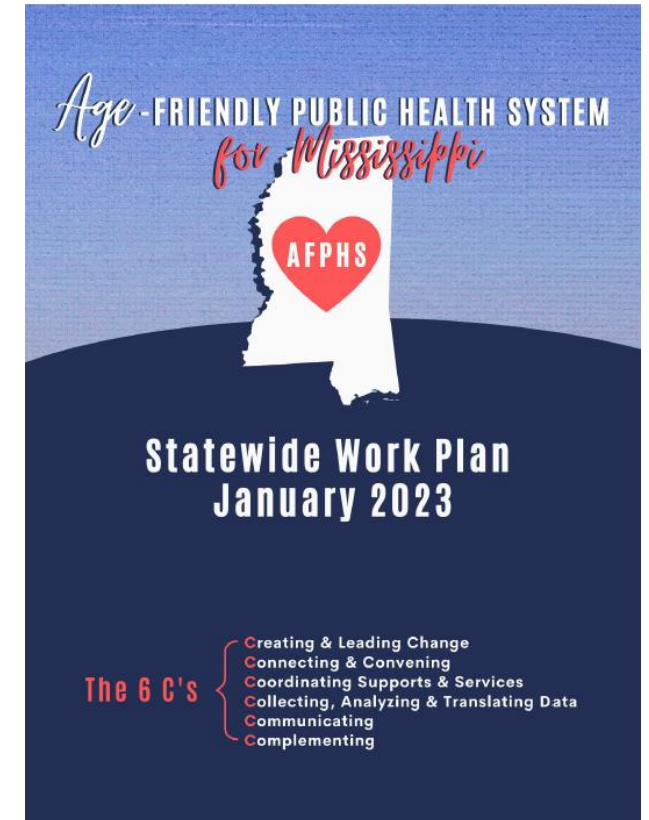


# KHI Selected to Support Age-Friendly Public Health Systems (AFPHS)

---

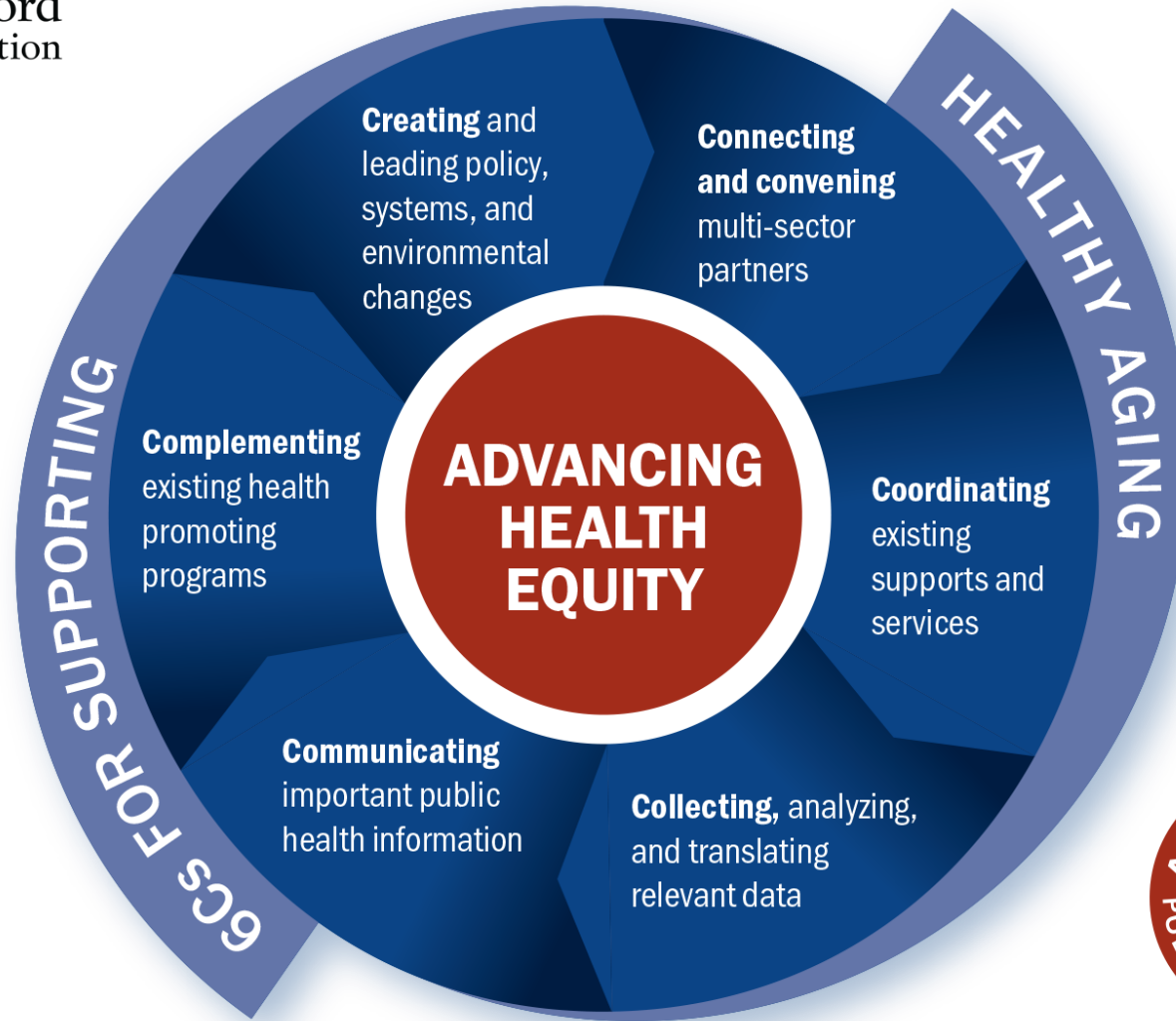
In partnership with Trust for America's Health (TFAH) and the National Network of Public Health Institutes (NNPHI):

- Collaborate with the Kansas Department of Health and Environment, the Kansas Department for Aging and Disability Services, the Kansas Department for Children and Families, and other stakeholders.
- Develop the Age-Friendly Kansas Action Plan using the 6Cs Framework.
  - **Goal:** Elevate healthy aging as a core public health issue.
- Create the Age-Friendly Kansas Steering Committee and Advisory Committee.





The  
**John A. Hartford**  
Foundation

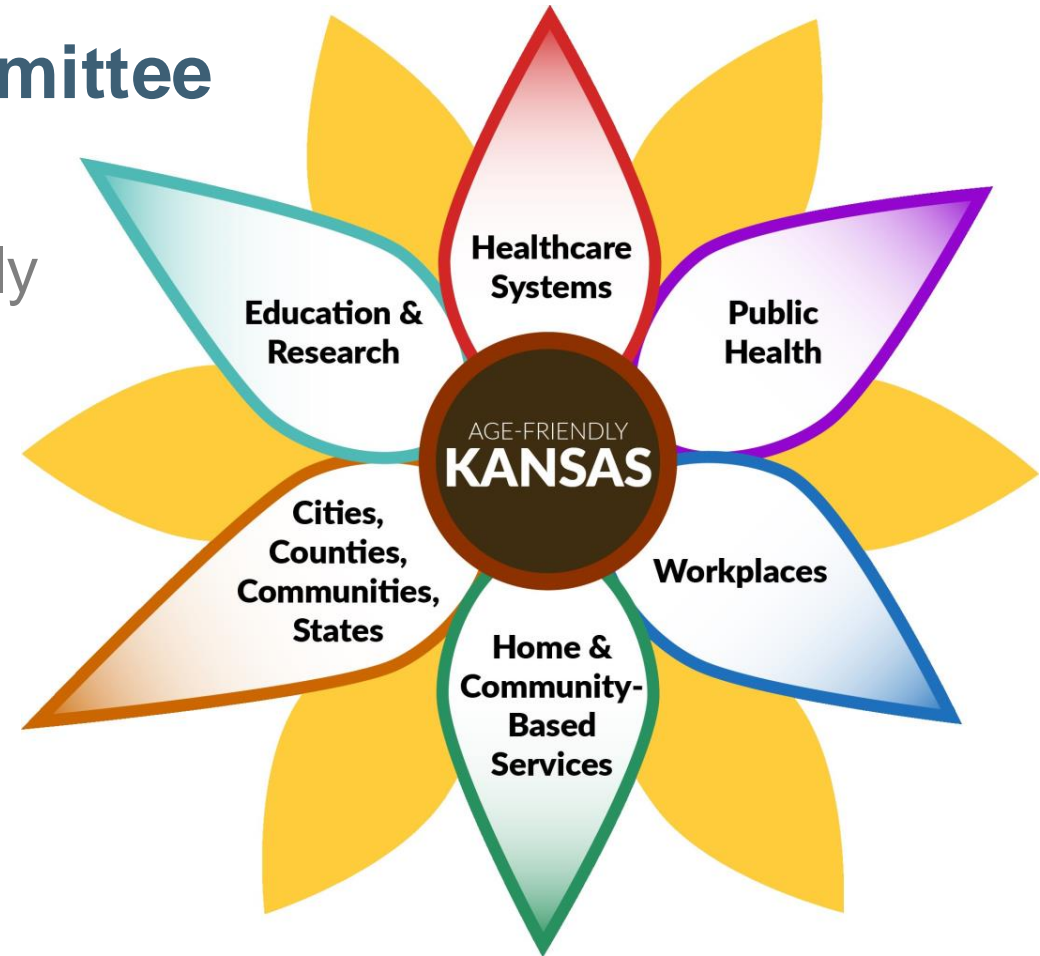


# Advisory Committee of Partner Organizations in Kansas

---

## Age-Friendly Kansas Advisory Committee

- Create a joint advocacy effort
- Leverage expertise and create age-friendly competency across systems and sectors
- Identify other age-friendly movements and work
- **Develop the Age-Friendly Kansas Action Plan** for creating an **age-friendly ecosystem** by recognizing social determinants of health



# GROUP INTRODUCTION

*Briefly Introduce Yourself and  
Describe Your Vision for the Group*

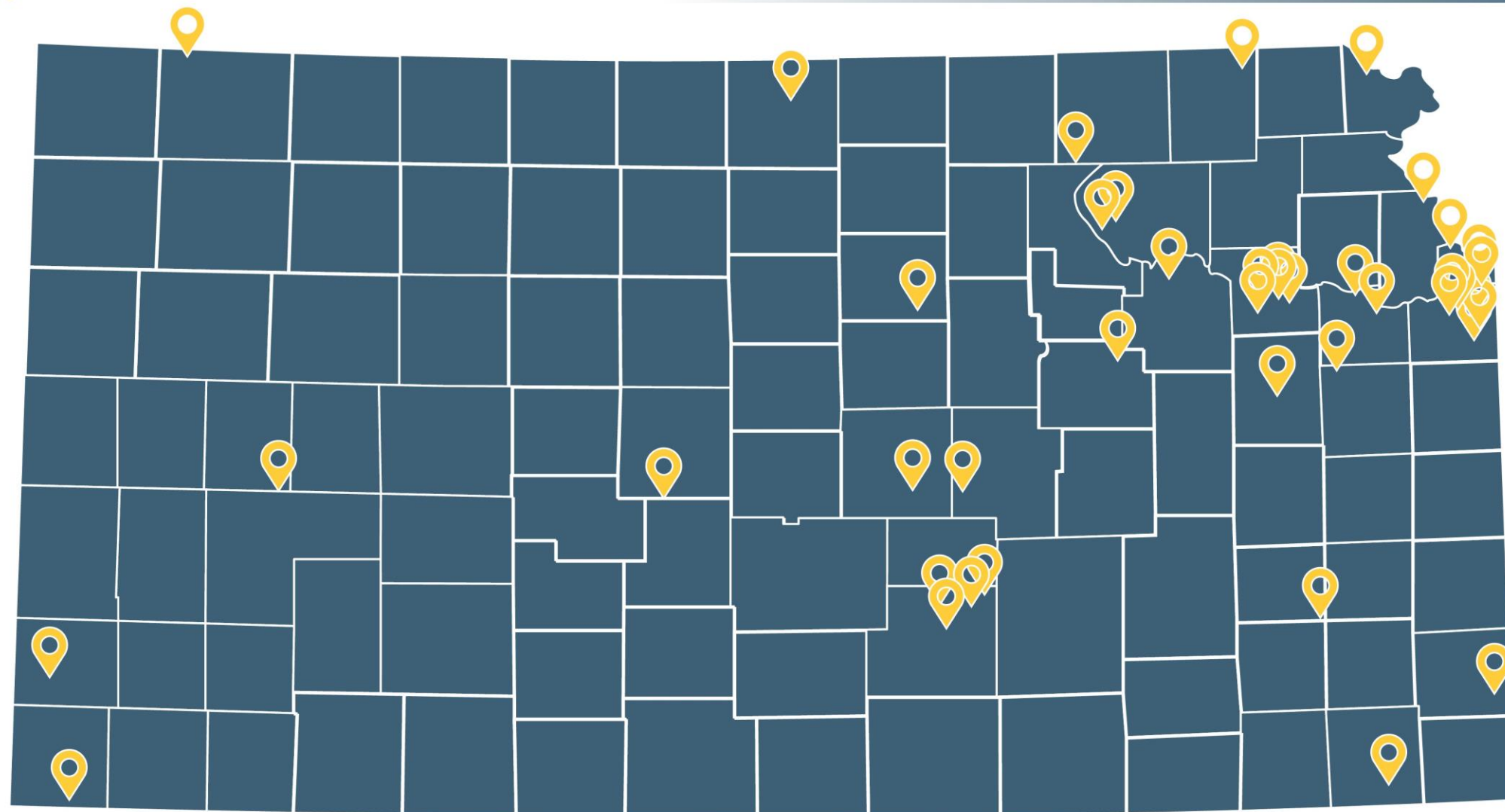






AGE-FRIENDLY  
**KANSAS**

## Statewide Applicants



# Applicant Disciplines

---

Public  
Health

Aging  
Services

Health  
Advocacy  
Groups

Aging  
Associations

Medical and  
Health Care

Legal

Local and  
State  
Government

Academia

Research

# Application Strategy Domains and Themes

An **Age-Friendly Ecosystem** is a comprehensive and inclusive environment designed to support the well-being and quality of life for people of all ages, particularly older adults.

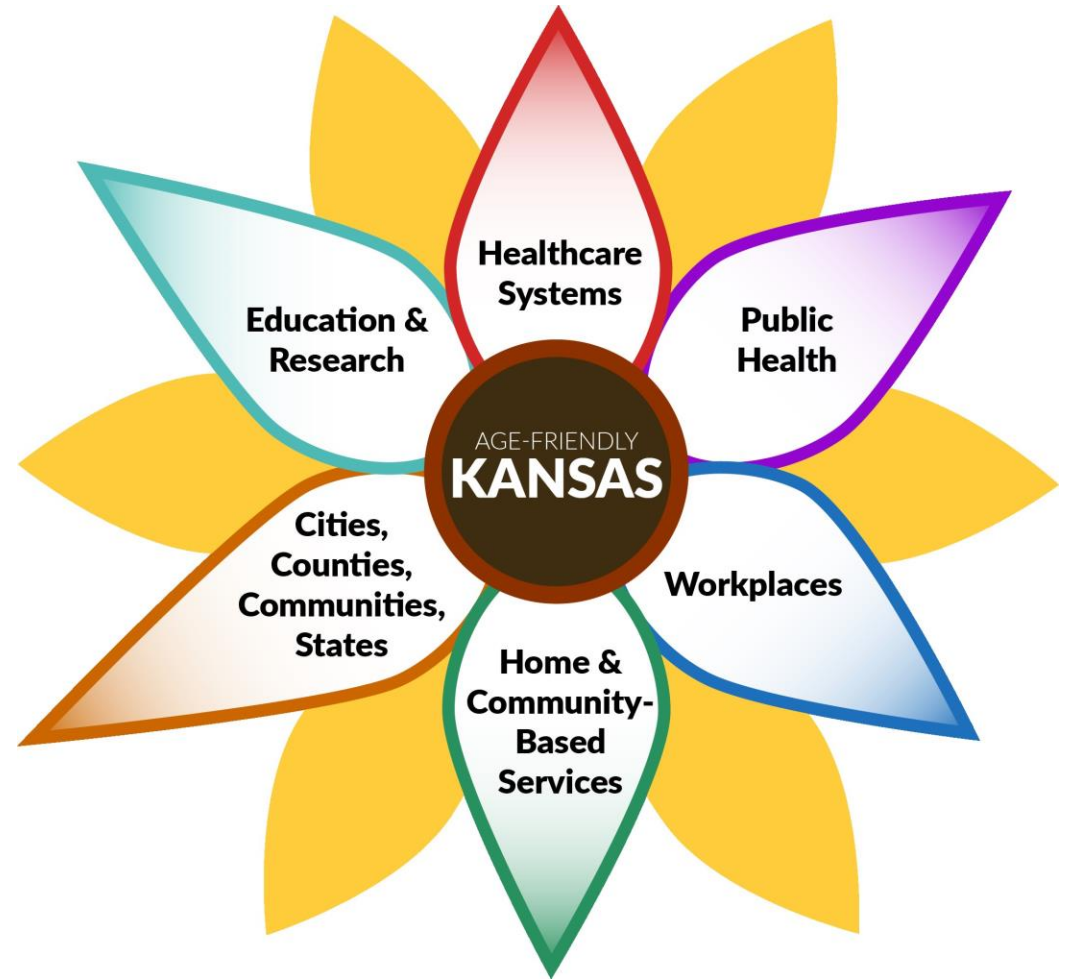
This **ecosystem** integrates various sectors such as physical infrastructure, social services, health care and public health to create a supportive and accessible environment.



# Review Insights from Applications

---

Thinking of the current **age-friendly ecosystem** in Kansas, how can Kansas better support the health and wellness needs of its aging population?





# Preliminary Strategy Domains

---

Domains	
1.	Public Health Initiatives
2.	Transportation
3.	Housing
4.	Healthcare Access and Services
5.	Community and Neighborhood Development
6.	Systems and Collaboration
7.	Workforce Development
8.	Education and Training
9.	Health and Wellness

# Breakout Session

*Discussing Application Strategy  
Domains and Themes*



# Advisory Group Role

---

## Guide

Guide discussion and focus of the action plan

## Contribute

Contribute experience and/or expertise

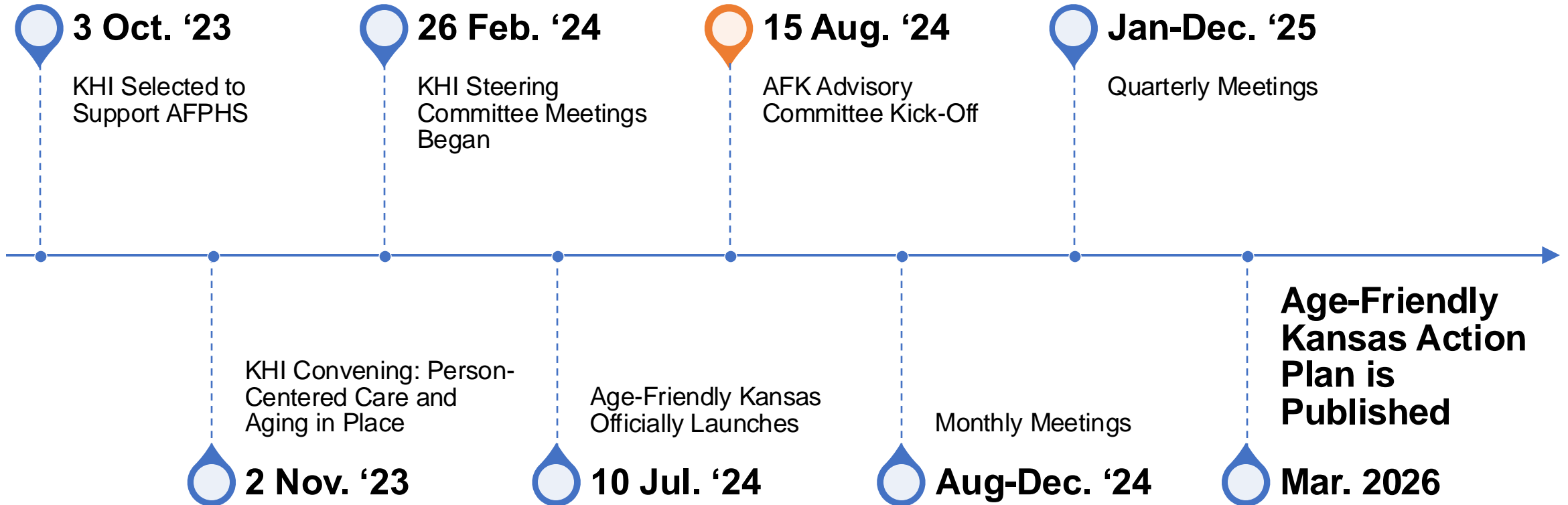
## Identify

Identify resources, such as content experts, best practices, research and data

## Advocate

Advocate for multidisciplinary age-friendly practices and principles

# Initiative Timeline





# Time Commitment

---



Attend monthly meetings until December 2024



Attend quarterly meetings in 2025



Participate in supplemental initiative activities (e.g., surveys)



Participate in optional age-friendly trainings to become an AFPHS champion.

# Benefits to Participation

---



Create a **common agenda** by adopting a shared vision that can help dismantle silos



Work toward **shared metrics** for consistency and shared accountability



**Mutually reinforcing activities** will lead to better coordinated efforts while leveraging limited resources



**Open communication** across sectors will help to facilitate engagement and build trust

# Age-Friendly Public Health Recognition Program

---

Department of Health Recognition	Public Health Organization Recognition	Individual Recognition
<ul style="list-style-type: none"><li>• Leading Policy and systems change</li><li>• Enhancing data collection on older adults</li><li>• Coordinating healthy aging activities across sectors</li><li>• Coordinating efforts to improve health equity among older adults</li></ul>	<ul style="list-style-type: none"><li>• Leading Policy and systems change</li><li>• Collaborating with state and local health departments</li><li>• Implementing healthy aging strategies</li><li>• Coordinating with other age-friendly initiatives to advance healthy aging policies</li></ul>	<ul style="list-style-type: none"><li>• Becoming a healthy aging expert</li><li>• Engaging in partnerships to advance healthy aging</li><li>• Sharing opportunities for supporting older adult health and well-being</li><li>• Communicating the importance of addressing ageism</li></ul>

# What AFK Members Hope to Accomplish

---

## Key Objectives from Registration

- Identify Needs and Funding Opportunities
- Build a Strong Network
- Enhance Community Awareness
- Achieve Statewide Positive Change
- Support Rural and Diverse Populations
- Advocate for Policy and Change
- Leverage Collaborations
- Implement Best Practices



# Looking Ahead - Meeting Schedule and Topics

---

Thursdays from 1 - 2:15 p.m.

- **Next Meeting: Sept. 19, 2024 –**  
Transportation Infrastructure and Coordination
- Oct. 17, 2024
- Nov. 21, 2024
- Dec. 19, 2024
- Quarterly Meetings in 2025

# Contact Me

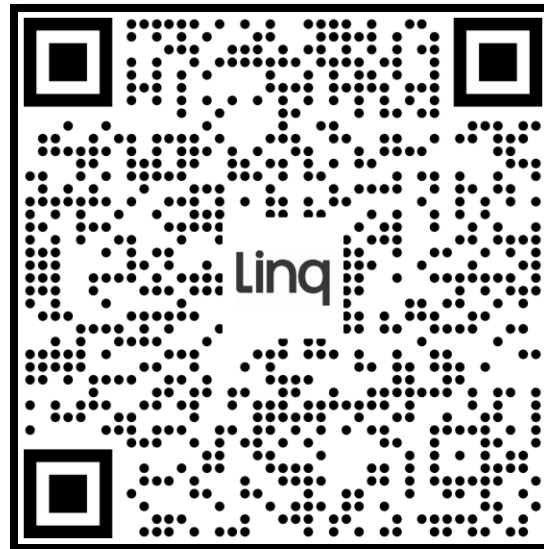
---

**Emma Uridge, M.P.H.**

*Analyst*

Kansas Health Institute

 [euridge@khi.org](mailto:euridge@khi.org)



# Connect With Us

---



[www.khi.org](http://www.khi.org)

@KHIorg



212 SW 8<sup>th</sup> Avenue | Topeka, KS | 785.233.5443