

Understanding Access: *Health Coverage for Kansas' Hispanic Communities*

AGENDA

Thursday, June 27, 2024

- 10:00 a.m. **Welcome**
Kari M. Bruffett, President & CEO, Kansas Health Institute
- 10:10 a.m. **Setting the Stage: *Health Coverage for Kansas***
Kaci Cink, M.P.H., Analyst, Kansas Health Institute
- 10:40 a.m. **Panel Discussion: Understanding Coverage in Hispanic Communities**
Geovannie Gone, L.M.A.C., M.S., Executive Director, Immunize Kansas Coalition
Justin Gust, M.S.W., B.S.W., Vice President of Community Engagement, El Centro, Inc.
Ton Mirás Neira, Community Health Worker Project Manager, University of Kansas Medical Center, Department of Family Medicine and Community Health
Christina Pacheco, J.D., M.P.H., Assistant Professor, Family Medicine and Community Health, University of Kansas Medical Center
- 11:20 a.m. **Q & A**
- 11:25 a.m. **Closing Remarks**
- 11:30 a.m. **Adjourn**

ABOUT THE SPEAKERS

SETTING THE STAGE: *HEALTH COVERAGE FOR KANSAS*

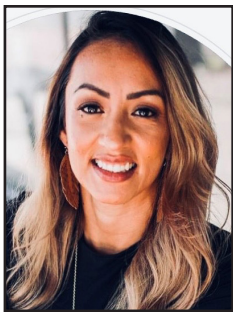


Kaci Cink, M.P.H., is an Analyst at the Kansas Health Institute (KHI). She provides data management and statistical analysis on issues related to access to care, market innovation and population health.

Before joining KHI, Cink assisted the New Forests Company in Johannesburg, South Africa, as a pro-bono consultant, working on a sustainable community health clinics project in Uganda and helping to secure a grant with combined public and private funds to upgrade local clinics. She also served in the Peace Corps as a Community HIV Outreach Coordinator in Mpumalanga, South Africa, working on project monitoring and evaluation. While an undergraduate at the University of Kansas, she was a Peer Health Educators Outreach Coordinator at Watkins Health Services and a Community Health Intern for the Lawrence-Douglas County Health Department.

Kaci received her master's degree in public health with a focus on epidemiology and statistics from the University of Glasgow, Scotland. She holds a bachelor's degree in applied behavioral science and sociology with a concentration in community health from the University of Kansas.

PANEL DISCUSSION: UNDERSTANDING COVERAGE IN HISPANIC COMMUNITIES



Geovannie Gone, L.M.A.C., M.S., oversees the development and implementation of Immunize Kansas Coalition (IKC) and statewide immunization strategies, new business initiatives, addresses vaccine equity, and related objectives. She provides oversight to government grant programs and other enabling services of the corporation. She thrives in finding ways to innovate and strategize plans to increase vaccine rates to reduce vaccine-preventable diseases. She has more than 15 years of health care experience. Gone is a graduate of Fort Hays Graduate School and has a master's degree in public health. She is a licensed Nutritionist, and a Licensed Addictions Counselor. She is the President and founder of Diversidad Latina in western Kansas, an organization that hosts the *Promotoras de Salud* program. Gone enjoys serving her state that welcomed her many years ago. She is a member of the State of Kansas Nursing Board, the Kansas Hispanic Latino Commission and just recently was appointed to the Governors Wellness Council. Prior to joining IKC she was the Chief Administrative Officer for

Genesis Family Health, a State of Kansas Federally Qualified Health Center in western Kansas.



Justin Gust, M.S.W., B.S.W., started with El Centro in 2014, as a Health Navigator in El Centro's Olathe office. He now serves as Vice President of Community Engagement and was previously the Director of Community Health, overseeing El Centro's Health Navigation Program, ¡Inscríbese! (Get Enrolled!) and ¡Vacúnate! (Get Vaccinated!) projects. A native of Olathe, Gust graduated from Kansas State University in 2012, with a bachelor's in social work and recently completed his masters' of social work at the University of Missouri in Kansas City in May 2024. He is certified in Patient Navigation through the Harold P. Freeman Patient Navigation Institute. He has completed more than 120 hours of Advanced Medical Interpreting courses, and has been a Navigator and Certified Application Counselor for the Health Insurance Marketplace since its implementation. He has served as Vice President on the Board of Directors for the Coalition of Hispanic Women Against Cancer and currently serves on the national Advisory Panel on Outreach and Education (APOE) for Centers for Medicare & Medicaid Services. Gust's passion to work with the Latino, immigrant population began while serving with different organizations in Mexico, from volunteering as an interpreter to helping with community development and health education programs.



Antonio (Ton) Mirás Neira was born and raised in Galicia, Spain. He studied sign language interpretation at the Universidade de Vigo, and graduated with a specialized degree in the psychosociology of the Deaf community and interpretation for the Deaf-Blind. He worked actively as an interpreter with the Deaf and Deaf-Blind community and became an official sign-language interpreter for the Spanish Parliament. He taught non-verbal communication and body expression at the University of Vigo, in collaboration with the university's Dramatic Arts department.

In 2012, Mirás Neira moved to the U.S. and began working as a Community Health Worker(CHW) with KC CARE Health Center. His enterprising work with patients in the emergency room at University of Kansas Hospital earned him the honor of KC CARE Health Center's Employee of the Year for 2015.

Since 2016, he has been supervising a team of CHWs whose focus has been to assist the underserved population in Wyandotte County, by empowering patients to get access to care and to address social needs among the African American, Refugee and Latino communities.

Mirás Neira has been the Co-Chair of the Kansas Coalition for Community Health Workers for three years, empowering other CHWs across Kansas, promoting education for CHWs and networking with different programs within the state.

Currently, he is the Project Manager of the COPE project at The University of Kansas Medical Center (KUMC), and is currently managing 60 CHWs in 20 different counties throughout Kansas to address clients' social determinants of health. Mirás Neira has developed and taught CHW and Supervisory training for his employees and co-designed a tailored database for CHWs to capture their outcomes and successes.



Christina Pacheco, J.D., M.P.H., (she/her) is an Assistant Professor in the Department of Family Medicine and Community Health. She has a secondary appointment in Population Health. Pacheco graduated from William Mitchell College of Law in 2008, with her Juris Doctor and from the University of KUMC in 2016, with a master's of public health (concentration in social and behavioral health). She is pursuing an interdisciplinary doctorate in bioinformatics and public administration at the University of Missouri-Kansas City. Pacheco has worked in public health for more than 14 years, policy and law for more than 16 years, and social justice and racial reconciliation for more than 20 years. She has aided in developing culturally tailored public health interventions, particularly in tobacco, environmental health, healthy eating, and physical activity.

Pacheco's research is not just a profession but a passion. As a community-based participatory researcher, her interests are deeply rooted in health inequities faced by Indigenous, Latino, and rural communities. Her goal is to understand how social impediments (determinants) impact the health of these communities.