

Data Walk: Reading Summit

POVERTY



Accessible Version

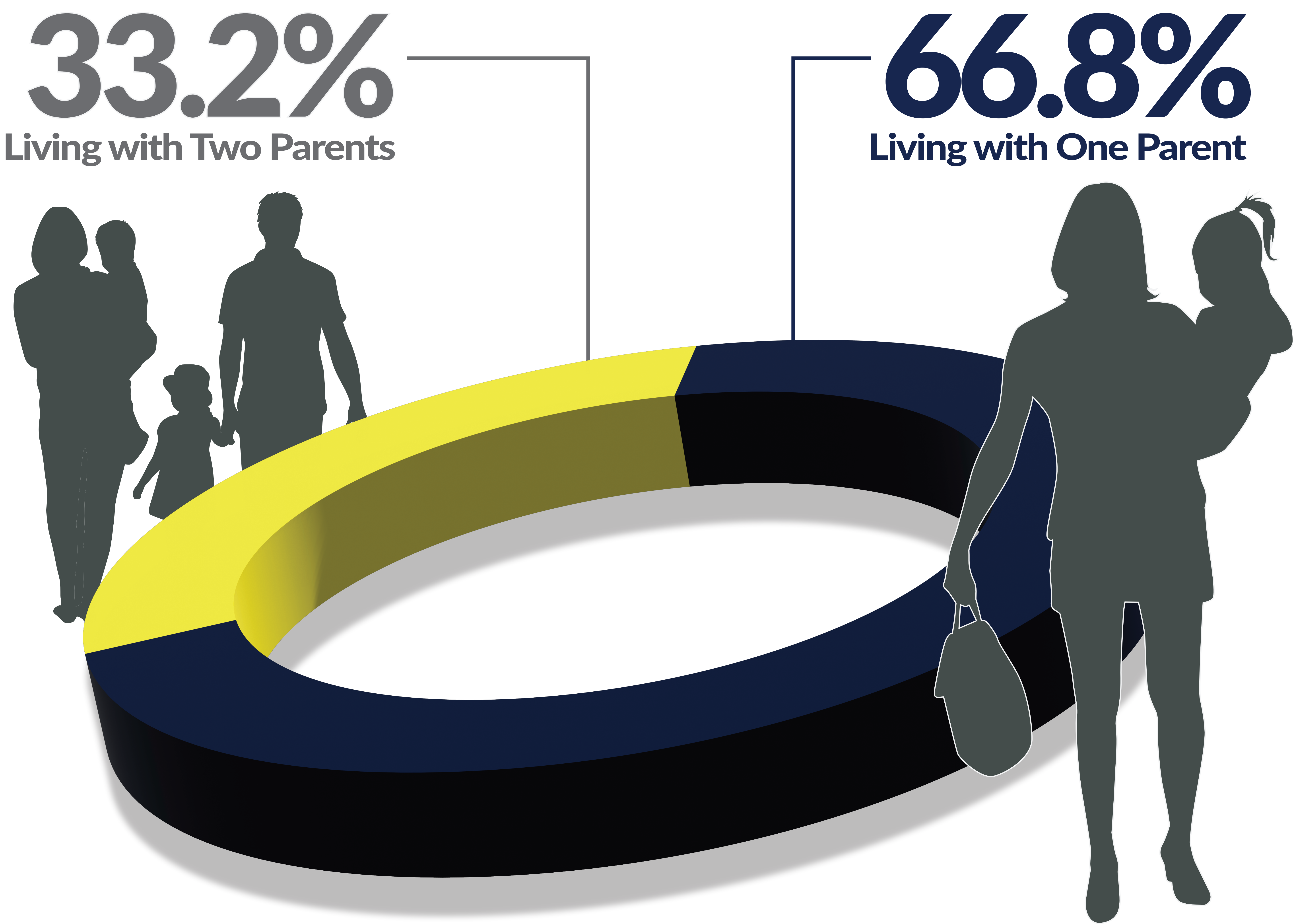
What This Measures:

Children in poverty in Kansas by type of household.

Two-thirds of children in poverty

in Kansas live in single-parent households.

Family Status of Children Living in Poverty in Kansas, 2022



Note: Number of own children living in families earning less than 100 percent of the federal poverty level (FPL; \$23,030 for a family of three in 2022) = 87,880 children or 13.3% of all children in Kansas.
Source: Kansas Health Institute analysis of U.S. Census Bureau American Community Survey (2022) 1-year Estimates Table B05010.

13.3% of children in Kansas live below the Federal Poverty Level (FPL).

\$23,030 FPL for a family of three in 2022.

Why this is important: Single parents are more likely to live in poverty when compared to cohabiting couples, and single mothers are much more likely to experience poverty when compared to single fathers. Single parents, more so than partnered parents, experience structural and economic barriers as well as stigma that can lead to inadequate resources and employment opportunities. Early childhood is a **critical developmental period**. Children born into poverty are **less likely to show kindergarten readiness** than their peers and can encounter more challenges to their physical, behavioral and emotional health.

(Source: The Annie E. Casey Foundation, County Health Rankings, Stokes et al. (2021) in American Heart Journal Plus, Roos, et al. (2019) in Pediatrics.)