



KANSAS HEALTH INSTITUTE

*Informing Policy. Improving Health.*



# Who We Are

---



- Nonprofit, nonpartisan educational organization based in Topeka.
- Established in 1995 with a multi-year grant by the Kansas Health Foundation.
- Committed to convening meaningful conversations around tough topics related to health.





# Ad Astra ECHO<sup>®</sup> Series

Immunizations in Kansas





KANSAS HEALTH INSTITUTE

*Informing Policy. Improving Health.*

# Access to Immunizations for Uninsured Adults

March 22, 2024



# Today's Agenda

---

- 10:00 Welcome**
- 10:05 Presentation**
- 10:30 Panel Discussion**
- 11:25 Closing Remarks**
- 11:30 Adjourn**



# Hello!

---

## Today's Presenter

**Amanda Applegate, PharmD, BCACP**  
Director of Practice Development  
Kansas Pharmacy Association (KPA)





**IMMUNIZE  
KANSAS  
COALITION**

***Working together to protect all Kansans  
from vaccine-preventable diseases.***



***View IKC's  
Webpage***



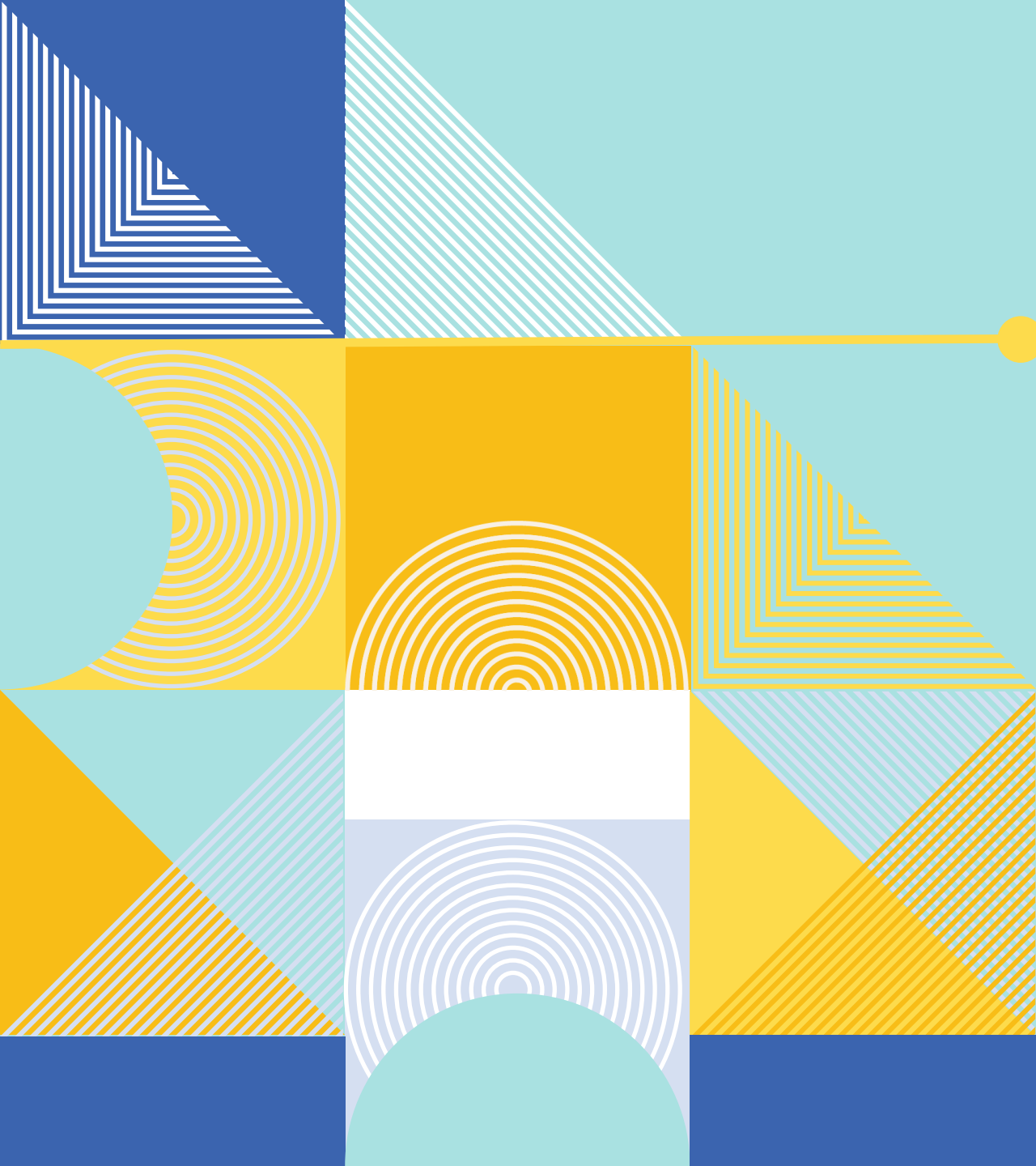
@immunizekscoalition



@immunizekscoalition



@ImmKSCoalition

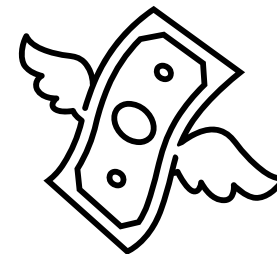
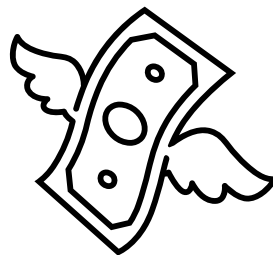
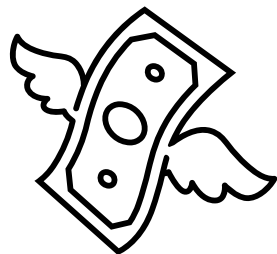


# VACCINATIONS IN UNINSURED ADULTS



# Vaccinations are expensive!

Vaccine	Public purchase	Private purchase
Gardasil 9 (HPV)	\$224.63	\$287.54
M-M-R-II (MMR)	\$24.96	\$92.49
Prevnar 20 (pneumococcal)	\$178.00	\$253.21
Engerix-B (Hep B)	\$32.43	\$66.83
Boostrix (Tdap)	\$28.54	\$47.39
Abrysvo (RSV)	\$195.99	\$295.00
Afluria (TIV influenza)	\$15.52	\$21.60



# What it takes to give a shot:

- Train employees in immunization administration
- CPR/BLS certification for all immunizers
- Contract with health plans
- Credential site and providers
- Contract with vaccine suppliers
- Contract with sharps disposal
- Sign up staff for KSWebIZ
- Order and pay for vaccines
- Order and pay for administration supplies
- Purchase certified thermometer
- Accept shipment
- Refrigerate vaccine
- Check fridge/freezer twice daily for temps
- Insure stock
- Schedule vaccine appointment
- Gather patient's insurance information

- Check insurance and eligibility
- Screen patient for what's needed and contraindications
- Assess patient's immunization history
- Check KSWebIZ for immunization history
- Counsel patient/guardian
- Print or email VIS forms
- Draw up vaccine
- Sterilize site
- Inject vaccine
- Bandage site
- Comfort patient
- Update patient record books
- Record correct diagnosis code and CPT code to administration record
- Record NDC, lot, and expiration date to administration record
- Update electronic record
- Report to KSWebIZ

- Inventory vaccine stock in fridge
- Submit claims for billing
- Send claim to clearinghouse then on to payers
- Receive payment response from insurance
- Rebill medical insurance claim denials
- Bill patient for outstanding balance
- Maintain records for 5-10 years
- VFC: Gather data to enroll in VFC
- VFC: Check for VFC eligibility and print/save record
- VFC: Send temp logs to state
- Annual immunization-related CE for providers
- Submit VAERS report if needed
- Recredentialing with insurances



# Insurance Coverage

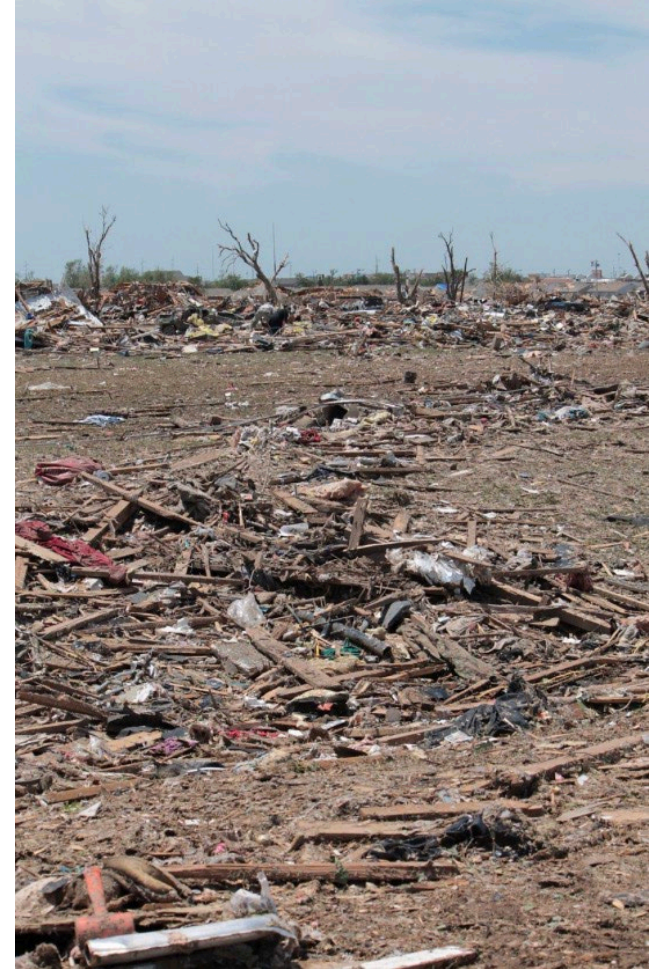
- If an adult has insurance, they have vaccine coverage
  - “Health plans will cover a set of standard vaccines recommended by the Advisory Committee on Immunization Practices”
- High deductible plans may cover vaccines without copay, even if other common care has a copay or cost sharing
- Plans may direct members to vaccination location
- Call plan to confirm

# Vaccines for Children (VFC)

- What?
  - Federal entitlement program
- Who?
  - Children from birth to 18 years + 364 days
  - American Indian/Alaska Native
  - Medicaid & CHIP eligible children
  - Uninsured children
  - Underinsured children (coverage cap, limited coverage, copays)
- Where?
  - Local health departments
  - Medical facilities
    - Pediatrics, family medicine, hospitals
    - FQHCs

# 317 Funds - Kansas

- What?
  - Limited federal funding
- Who?
  - Uninsured adults - mostly flu shots
  - Disaster or outbreak of a vaccine preventable disease
    - Tdap after tornado or flood
    - Hep A outbreak
- Where?
  - Most local health departments
  - FQHC/safety net clinics
  - Seasonal flu shot clinics (Federal 317)



# Bridge Access Program (BAP)

- What?
  - Limited federal funding expiring December 31, 2024
  - COVID-19 vaccines only
- Who?
  - Uninsured or underinsured adults aged 18 years and older
- Where?
  - Federally qualified health centers
  - Pharmacies
    - CVS
    - Walgreens
    - Independent pharmacies

**Uninsured?**

**Protect yourself  
with a free  
COVID-19  
vaccine.**



# Bridge Access Program (BAP)

- Search for BAP sites on [www.vaccines.gov](http://www.vaccines.gov)

## Locations near 67665 who report having COVID-19 vaccines in stock. \*

with Moderna (12+ / 18+) or Pfizer-BioNTech (12+ / 18+) or Novavax (12+ / 18+)

### Only show locations with:

Ability to vaccinate 6 months ↕

All searched vaccines in stock

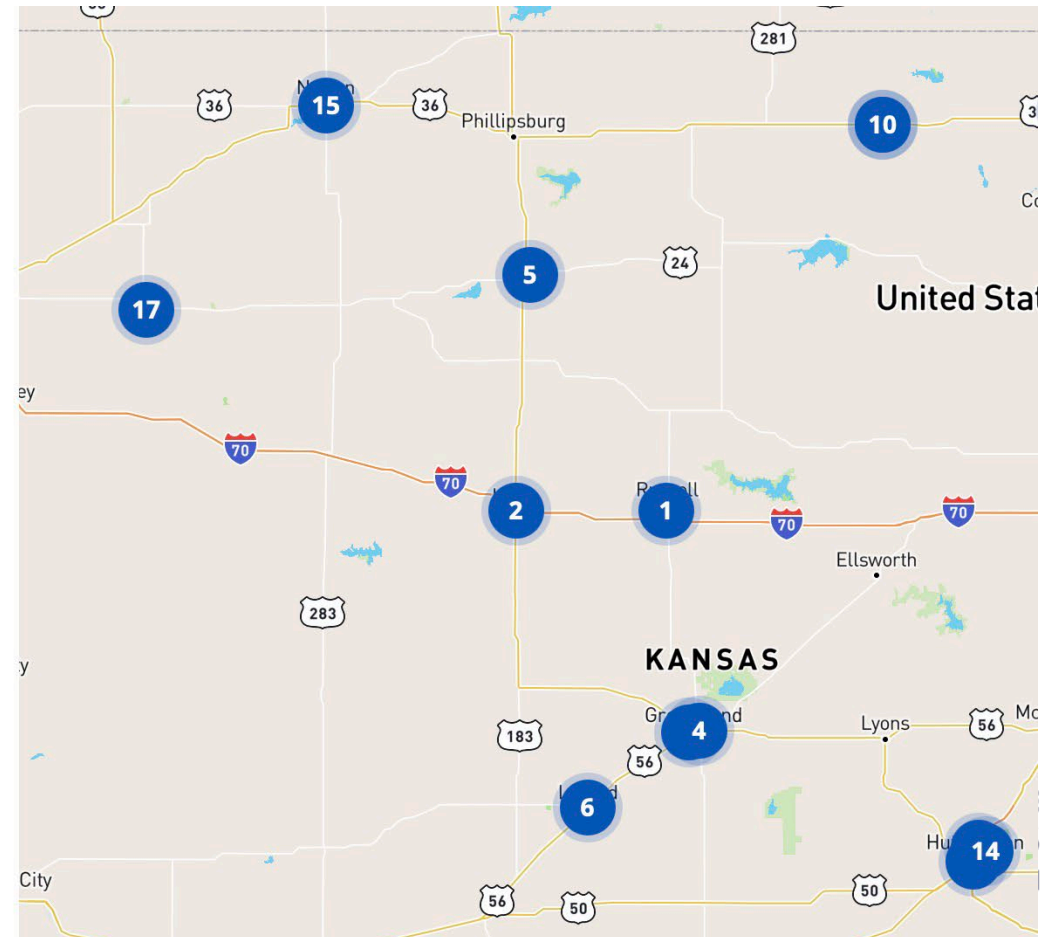
**Bridge Access Program Participant**

Provides no-cost COVID-19 vaccines to adults without health insurance and adults whose insurance does not cover all COVID-19 vaccine costs.

[Learn more](#) ↗

Powered by **VaccineFinder**

\* Please note that Vaccines.gov reflects vaccine availability only from providers who have agreed to report their information to CDC.



# Federally Qualified Health Clinics: FQHCs

- What?
  - Federally funded health clinics
  - Receive reimbursement under a prospective payment system for Medicare & Medicaid
  - Influenza, pneumococcal, and COVID-19 reimbursed through cost report
  - Other vaccines through patient assistance programs
- Who?
  - Offer services to all persons, regardless of their ability to pay
  - Sliding fee scale available under 200% of federal poverty level
- Where?
  - <https://findahealthcenter.hrsa.gov>



# Local Public Health Departments

- What?
  - Decentralized health departments funded by local taxes and state allocation
  - Limited state budget allocation for optional special projects:
    - Flu shot clinics
    - Pertussis (whooping cough) cocooning for newborns
  - Fee for service
- Who?
  - Children up to 18 years + 364 days - VFC
  - Adults - influenza
- Where?
  - Nearly always located in county seat

# Non-profit agencies

- What?
  - Privately funded non-profit organizations purchasing immunizations for administration by healthcare facility
- Who?
  - Dependent on the agency
- Where?
  - Dependent on the agency



The banner features logos for KU The University of Kansas School of Pharmacy, Operation Immunization (Student Pharmacists and Practitioners Protecting The Public Health), and United Way of the Plains. The main text reads 'Free Flu Vaccinations' in large white letters on a blue background. Below this, it states 'Five Wichita locations on Saturday, October 17, 9 a.m.-1 p.m.' and 'Evergreen Recreation Center, 2700 North Woodland'. A table lists four locations: Guadalupe Clinic (940 South St. Francis, 9 a.m.-1 p.m.), Guadalupe Clinic South (2825 South Hillside, 9 a.m.-1 p.m.), GraceMed (1122 North Topeka St., 9 a.m.-1 p.m.), and HealthCore Clinic (2707 East 21st St. North, 9 a.m.-1 p.m.). All are on Saturday, October 17. A link 'Learn more: unitedwayplains.org/health/operation-immunization' is provided. The bottom of the banner displays logos for Guadalupe Clinic, GraceMed, JayDoc Community Clinic, Dandurand Herbaturals, Wichita Academy of Pharmacists, HealthCore Clinic, Park & Recreation City of Wichita, and Walgreens.

Guadalupe Clinic 940 South St. Francis 9 a.m. - 1 p.m. Saturday, October 17	Guadalupe Clinic South 2825 South Hillside 9 a.m. - 1 p.m. Saturday, October 17	GraceMed 1122 North Topeka St. 9 a.m. - 1 p.m. Saturday, October 17	HealthCore Clinic 2707 East 21st St. North 9 a.m. - 1 p.m. Saturday, October 17
--------------------------------------------------------------------------------------	------------------------------------------------------------------------------------------	------------------------------------------------------------------------------	------------------------------------------------------------------------------------------

Learn more: [unitedwayplains.org/health/operation-immunization](http://unitedwayplains.org/health/operation-immunization)

# Pharmacies

- What?
  - National chains and independently owned pharmacies
  - Fee for service
    - Can check costs before administration
    - Discount programs may be available
- Who?
  - Anyone
- Where?
  - 104 out of 105 Kansas counties



# Key points

- Vaccines for Adults is desperately needed - tell your federal legislators to leave it in the budget!
- Seasonal flu shots and COVID-19 currently widely available for uninsured adults
- Tdap available at most local health departments for uninsured adults with close contact with infants
- Other routine vaccinations for uninsured adults are sometimes available through a patchwork of access points



# Any questions

Amanda Applegate  
[amanda@ksrx.org](mailto:amanda@ksrx.org)

# Panelists

---

## Building Trust and Addressing Concerns in Maternal Immunization



**Amanda Applegate,  
PharmD, BCACP**

*Director of Practice  
Development, KPA*



**Jessica Crawford,  
LPN**

*Immunization & Infection  
Control Nurse, Salina  
Family Health Center*



**Becky Prall, RN**

*Immunization Program  
Section Chief, KDHE*



**Lucy Watie**

*Community Health  
Specialist, IKC*



# Case Scenario #1

---

## Diego, 18-year-old

***Patient Profile:*** Diego, an 18-year-old uninsured adult living in a rural area with a FQHC and a local health department nearby. Diego is a college freshman attending a local community college.

***Scenario Description:*** Diego recently attended an outreach event in Spanish that discussed the importance of immunizations and wants to get the meningococcal vaccination. He has access to transportation and is willing to travel within his city to find a clinic offering the vaccines.

***Challenge:*** While Diego lacks health insurance, he has relatively easy access to options in his area. The challenge lies in finding affordable options for immunizations and navigating the different locations.



# Case Scenario #2

---

## Carlos, 60-year-old

**Patient Profile:** Carlos, a 60-year-old uninsured adult working part-time and living in Western KS with minimal access to healthcare and transportation. Carlos is not sure that he wants or needs to get immunized.

**Scenario Description:** Carlos resides in a frontier county, with no nearby clinics or health departments. He needs vaccinations for influenza, COVID-19, RSV, pneumonia and shingles but lacks the means to travel long distances to access healthcare services. A family member told him about a bad experience they had, and another family member had shingles, so he knows how painful shingles are. He's not sure what he wants to do.

**Challenge:** Carlos faces has received mixed messages on vaccines and significant difficulty accessing immunizations due to distance to care, and limited transportation options. Carlos may require tailored outreach efforts and community-based interventions to receive the necessary vaccines.





**JUNTOS SI PODEMOS** | **Vacunas.gov** | Inicio | Encuentre vacunas contra el COVID-19 | Encuentre vacunas contra la influenza (gripe) | English | 

¿Necesita ayuda para encontrar una vacuna contra el COVID-19 en los EE. UU.? Llame al [1-800-232-0233](tel:1-800-232-0233) (TTY [1-888-720-7489](tel:1-888-720-7489))

## Encuentre vacunas contra el COVID-19 cerca de usted


Use Vacunas.gov para encontrar un sitio para vacunarse cerca de usted, luego llame o visite la página web para hacer una cita.

[Encontrar vacunas contra el COVID-19](#)

[Estoy buscando vacunas contra la influenza \(gripe\) →](#)

Desarrollado por VaccineFinder



**WE CAN DO THIS** | **Vaccines.gov** | Home | Find COVID-19 Vaccines | Find Flu Vaccines | Español | 

Need help finding a COVID-19 vaccine in the U.S.? Call [1-800-232-0233](tel:1-800-232-0233) (TTY [1-888-720-7489](tel:1-888-720-7489))


## Find a COVID-19 vaccine near you

Use Vaccines.gov to find a location near you, then call or visit their website to make an appointment.

[Find COVID-19 Vaccines](#)

[I'm looking for flu vaccines →](#)

Powered by VaccineFinder



<https://www.vaccines.gov/es/>

<https://www.vaccines.gov/>

## Find COVID-19 Vaccines

Powered by **VaccineFinder**

### Updated COVID-19 Vaccine Now Recommended for Children and Adults

The updated COVID-19 vaccine is now available for children and adults. Search to find a location near you. If you have insurance, check with your selected site or your insurer to confirm that the site is in network. If you do not find a convenient location, check back later or contact your health care provider or local health department. Learn more about [COVID-19 vaccine recommendations](#). [↗](#)

### 5-digit Zip Code

### Vaccine Options

#### Teens & Adults

ages

- Moderna ————— 12+ / 18+
- Pfizer-BioNTech ————— 12+ / 18+
- Novavax ————— 12+ / 18+

#### Children

- Pfizer-BioNTech ————— 5 - 11
- Moderna ————— 6mo - 11
- Pfizer-BioNTech ————— 6mo - 4

**Search for COVID-19 Vaccines**

[← Back to COVID-19 Search](#)

## Locations near 67801 who report having COVID-19 vaccines in stock. \*

with Moderna (12+ / 18+) or Pfizer-BioNTech (12+ / 18+) or Novavax (12+ / 18+)

### Only show locations with:

Ability to vaccinate 6 months [▼](#)

All searched vaccines in stock

**Bridge Access Program** Participant

Provides no-cost COVID-19 vaccines to adults without health insurance and adults whose insurance does not cover all COVID-19 vaccine costs.

[Learn more](#) [↗](#)

1. [FORD CO HEALTH DEPT](#) 0.8 miles  
507 Avenue L, Dodge City, KS 67801  
✓ **In stock.** Check appointment availability:  
• Moderna (12+ / 18+)  
👤 Able to vaccinate **ages 6 months+**  
★ [Bridge Access Program](#) Participant

[Visit Website](#) 📄

[Call \(620\) 227-4545](#) 📞

---

2. [Dillon's Pharmacy #61500001](#) 1.1 miles  
1700 N 14th Ave, Dodge City, KS 67801  
✓ **In stock.** Check appointment availability:  
• Moderna (12+ / 18+)  
• Pfizer-BioNTech (12+ / 18+)  
👤 Call for provider's age policies

[Check Availability](#) 📄

[Call \(620\) 225-6140](#) 📞

3. [Walgreens Co. #7817](#) 1.3 miles  
1801 N 14th Ave, Dodge City, KS 67801  
✓ **In stock.** Check appointment availability:  
• Moderna (12+ / 18+)  
👤 Able to vaccinate **ages 12+**  
★ [Bridge Access Program](#) Participant

[Check Availability](#) 📄

[Call 620-225-6095](#) 📞

---

4. [Walmart Inc #10-0372](#) 1.5 miles  
1905 N 14th Ave, Dodge City, KS 67801  
✓ **In stock.** Check appointment availability:  
• Pfizer-BioNTech (12+ / 18+)  
👤 Call for provider's age policies

[Check Availability](#) 📄

[Call 6202253917](#) 📞

## Find COVID-19 Vaccines

Powered by [VaccineFinder](#)

### Updated COVID-19 Vaccine Now Recommended for Children and Adults

The updated COVID-19 vaccine is now available for children and adults. Search to find a location near you. If you have insurance, check with your selected site or your insurer to confirm that the site is in network. If you do not find a convenient location, check back later or contact your health care provider or local health department. Learn more about [COVID-19 vaccine recommendations](#).

### 5-digit Zip Code

67854

### Vaccine Options

#### Teens & Adults

ages

- Moderna ————— 12+ / 18+
- Pfizer-BioNTech ————— 12+ / 18+
- Novavax ————— 12+ / 18+

#### Children

- Pfizer-BioNTech ————— 5 - 11
- Moderna ————— 6mo - 11
- Pfizer-BioNTech ————— 6mo - 4

[Search for COVID-19 Vaccines](#)

#### 1. [Walgreens Co. #7817](#) 23.3 miles

1801 N 14th Ave, Dodge City, KS 67801

✓ **In stock.** Check appointment availability:

- Moderna (12+ / 18+)

👤 Able to vaccinate **ages 12+**

★ [Bridge Access Program](#) Participant

[Check Availability](#)

[Call 620-225-6095](#)

#### 2. [FORD CO HEALTH DEPT](#) 23.6 miles

507 Avenue L, Dodge City, KS 67801

✓ **In stock.** Check appointment availability:

- Moderna (12+ / 18+)

👤 Able to vaccinate **ages 6 months+**

★ [Bridge Access Program](#) Participant

[Visit Website](#)

[Call \(620\) 227-4545](#)

# Case Scenario #3

---

## Mary, 45-year-old

**Patient Profile:** Mary, a 45-year-old uninsured adult living in a rural area with limited healthcare resources and has difficulty taking time off work.

**Scenario Description:** Mary recently moved to a rural town where healthcare services aren't close. She needs vaccinations for influenza and tetanus but struggles to find nearby clinics or health departments with affordable prices and later hours. Transportation is limited, and she cannot afford long-distance travel. She doesn't feel like she can leave during her shift or afford to take the day off.

**Challenge:** Mary faces difficulty accessing immunizations due to geographical barriers, limited access to care in her rural community and difficulty taking off work. Finding affordable options nearby is challenging, and she may need to explore alternative solutions for transportation and vaccine access.



# Acknowledgments

---



# Announcements

---

## Future Sessions

### Immunizations for Adolescents and Young Adults

May 3, 2024, 10-11:30a.m.

Register [HERE](#)

For more information, visit [Ad Astra ECHO Series: Immunizations in Kansas](#)





# KANSAS HEALTH INSTITUTE

---

*Informing Policy. Improving Health.*



[bit.ly/AdAstraECHO](https://bit.ly/AdAstraECHO)