



KANSAS HEALTH INSTITUTE

# MEDICAID AND THE CHILDREN'S HEALTH INSURANCE PROGRAM IN KANSAS

December 7, 2023



# Who We Are

---



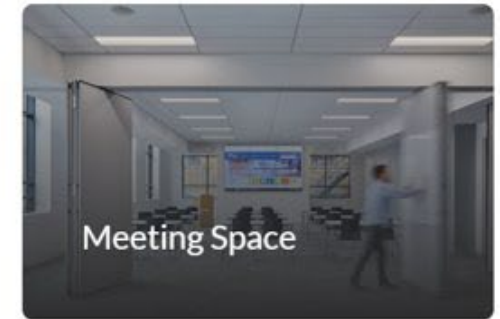
- Nonprofit, nonpartisan educational organization based in Topeka.
- Established in 1995 with a multi-year grant by the Kansas Health Foundation.
- Committed to convening meaningful conversations around tough topics related to health.





# KHI Services

---



# The Kansas Legislative Research Department

---

- Provides nonpartisan, objective research and fiscal analysis for members of the Kansas Legislature year-round.
- Provides resources to facilitate legislators in making informed decisions.
- Supports the work of legislative standing, joint, and interim committees by preparing or providing budget analyses, briefings, memos, and reports.



**KLRD**

**Kansas Legislative Research Department**

*Providing nonpartisan, objective research and fiscal analysis for the Kansas Legislature since 1934*

# Today's Agenda

---

1. Welcome
2. Overview of Medicaid and the Kansas Children's Health Insurance Program
3. Sneak peek at the Kansas Medicaid Primer 2024
4. Questions and Answers with the Authors
5. Closing Remarks



# Acknowledgments

---

We recognize the following individuals for their contributions:



**Sheena L. Schmidt,  
M.P.P.**

*Senior Analyst*



**Emma Uridge,  
M.P.H.c, C.H.E.S.**

*Research Assistant*



**Kaci Cink**

*Research Assistant*



**Wen-Chieh Lin, Ph.D.**

*Director of Research*



**Kari Bruffett**

*President and CEO*



**Stewart Cole**

*Graphic Designer*





# Acknowledgments

---

We recognize the following individuals at KLRD for their contributions.



**J.G. Scott**  
*Director*



**Melissa Renick**  
*Deputy Director for  
Research*



**Dylan Dear**  
*Deputy Director for  
Fiscal Affairs*



**Megan Leopold**  
*Managing Fiscal  
Analyst*



**Leighann Thone**  
*Research Analyst*

The authors would also like to thank Dayton LaMunyon and Amanda Prosser with KLRD for serving on the review team. In addition, we thank the Kansas Department of Health and Environment (KDHE) for providing information and reviewing portions of the report.



# Tell us about yourself!

---

# POLL





# An Overview of Medicaid and the Children's Health Insurance Program in Kansas



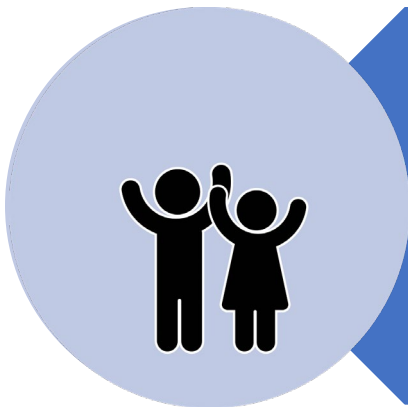
KANSAS HEALTH INSTITUTE

*Informing Policy. Improving Health.*

# Medicaid and the Children's Health Insurance Program (CHIP) in Kansas



Medicaid: Enacted in 1965, it provides coverage for health services and long-term care to eligible low-income dependent children, parents, pregnant women, people with disabilities and older adults, as well as some individuals with specific health conditions.



## CHIP:

Adopted in Kansas in 1998 and implemented in 1999, it provides similar coverage to uninsured low-income children who are not eligible for Medicaid, but who can't afford private coverage.

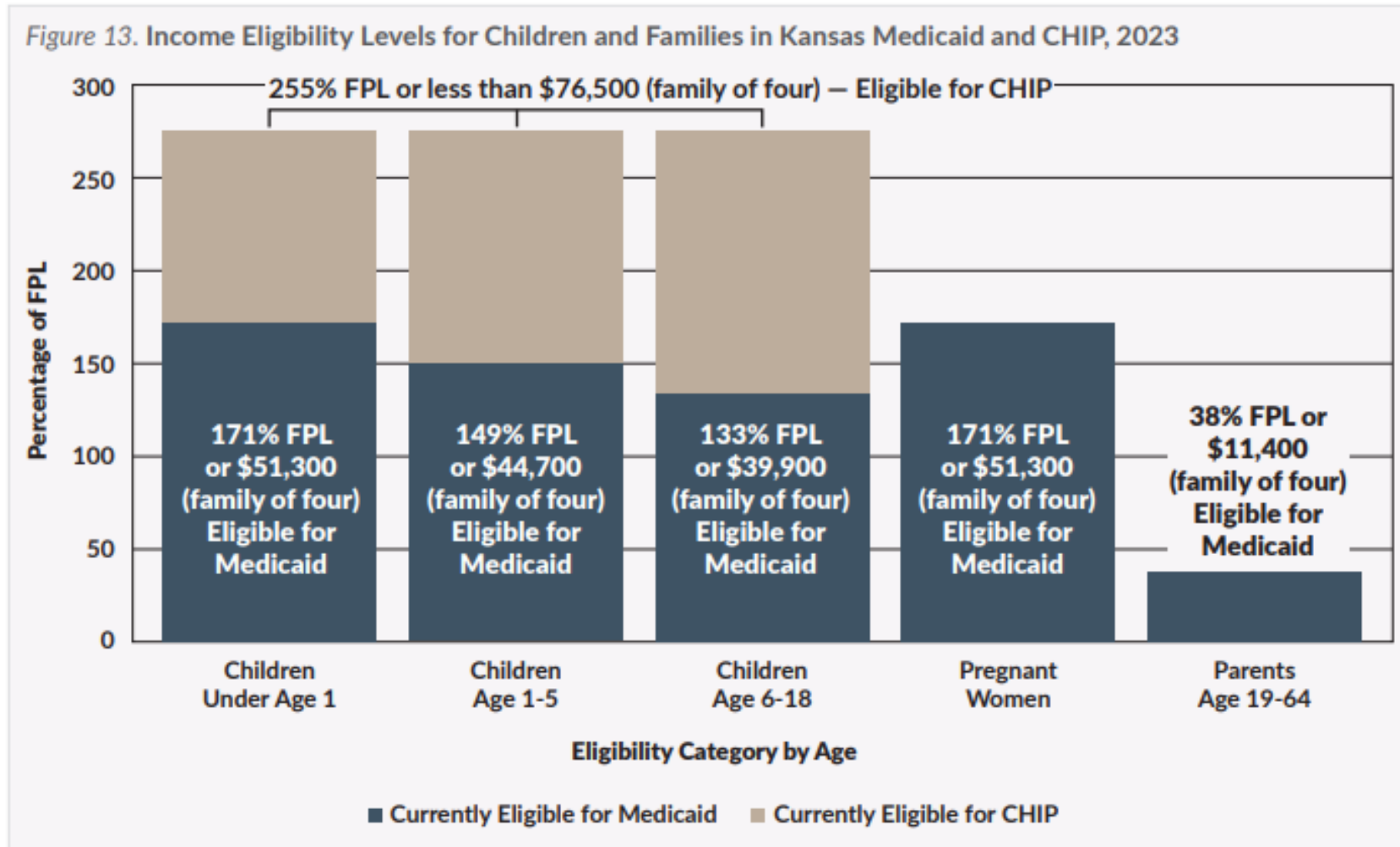


# Financing Medicaid and CHIP

- Jointly funded by the federal government and states.
  - By law, every state receives at least a 50 percent match in federal dollars. Federal Medical Assistance Percentages (FMAP) vary by state.
    - Medicaid: 60.97 percent in Kansas (For every \$1 that Kansas spends on Medicaid, the federal government contributes \$1.56)
    - CHIP: 72.68 percent in Kansas
    - The federal match rate that had been enhanced during the pandemic is phased out in 2024.



# Income Eligibility Levels for Children and Families in Kansas Medicaid and CHIP, 2023





# Mandatory and Optional Populations

- There are populations that must be covered by federal law and populations that are optional for whom Kansas has extended coverage
- Medicaid eligibility can be divided into two broad categories:
  - Low-income children and families
    - Pregnant women, parents or caretakers, and infants and children, including children in foster care
  - Low-income older adults and people with disabilities
    - Medically Needy, MediKan, Working Healthy, Medicaid-Medicare Dual Eligibility, Program of All-Inclusive Care for the Elderly (PACE), HCBS Waivers
  - Other Medicaid Populations include, for example, eligible individuals with breast and cervical cancer, tuberculosis or acquired immunodeficiency syndrome (AIDS)



# Medicaid and the Children's Health Insurance Program (CHIP)

## Key Events Impacting Medicaid and CHIP

2007-2009  
Great Recession

January 2013  
KanCare Adopted

October 2013  
Healthcare.gov  
Launched

July 2015  
Kansas Eligibility  
Enforcement System  
Implemented for  
Medicaid Eligibility

December 2018  
KanCare Reapproved  
through December  
2023

March 2020-2023  
COVID-19 Pandemic  
and Related Policy  
Changes

July 2022  
Extension of Post-partum  
Coverage for Pregnant  
Women from 60 days to  
12 months

April 1, 2023  
Medicaid Eligibility  
Redeterminations  
Resume

April 2024  
KanCare MCO  
contracts will be  
awarded

December 31, 2024  
Previous KanCare  
MCO contracts  
expire

January 1, 2025  
Awarded KanCare  
MCO contracts  
take effect



# Kansas Medicaid Primer 2024: A Sneak Peek



KANSAS HEALTH INSTITUTE

*Informing Policy. Improving Health.*

# Enrollment





# Differences Between the Medicaid and Medicare Programs in Kansas

## Medicaid

- Medical care and long-term care coverage for low-income children and pregnant women, and some low-income parents, adults age 65 and older and individuals with disabilities.
- Administered at the state level, within federal guidelines.

## Dually Eligible

- Medical care coverage for low-income adults age 65 and older and low-income individuals with disabilities who qualify for social security disability benefits.
- Medicaid pays for Medicare Premiums, out-of-pocket expenses and additional services not provided through Medicare such as long-term services and supports.
- Administered at the state and federal levels.

## Medicare

- Provides benefits for adults age 65 and older, some people with disabilities who qualify for social security benefits or who are receiving treatment for end-stage renal disease.
- Provides medical care coverage, but very limited long-term care coverage.
- Has no income limit.
- Receives federal funding collected by payroll deduction and administered at the federal level.

Number of  
Enrollees  
FY 2023

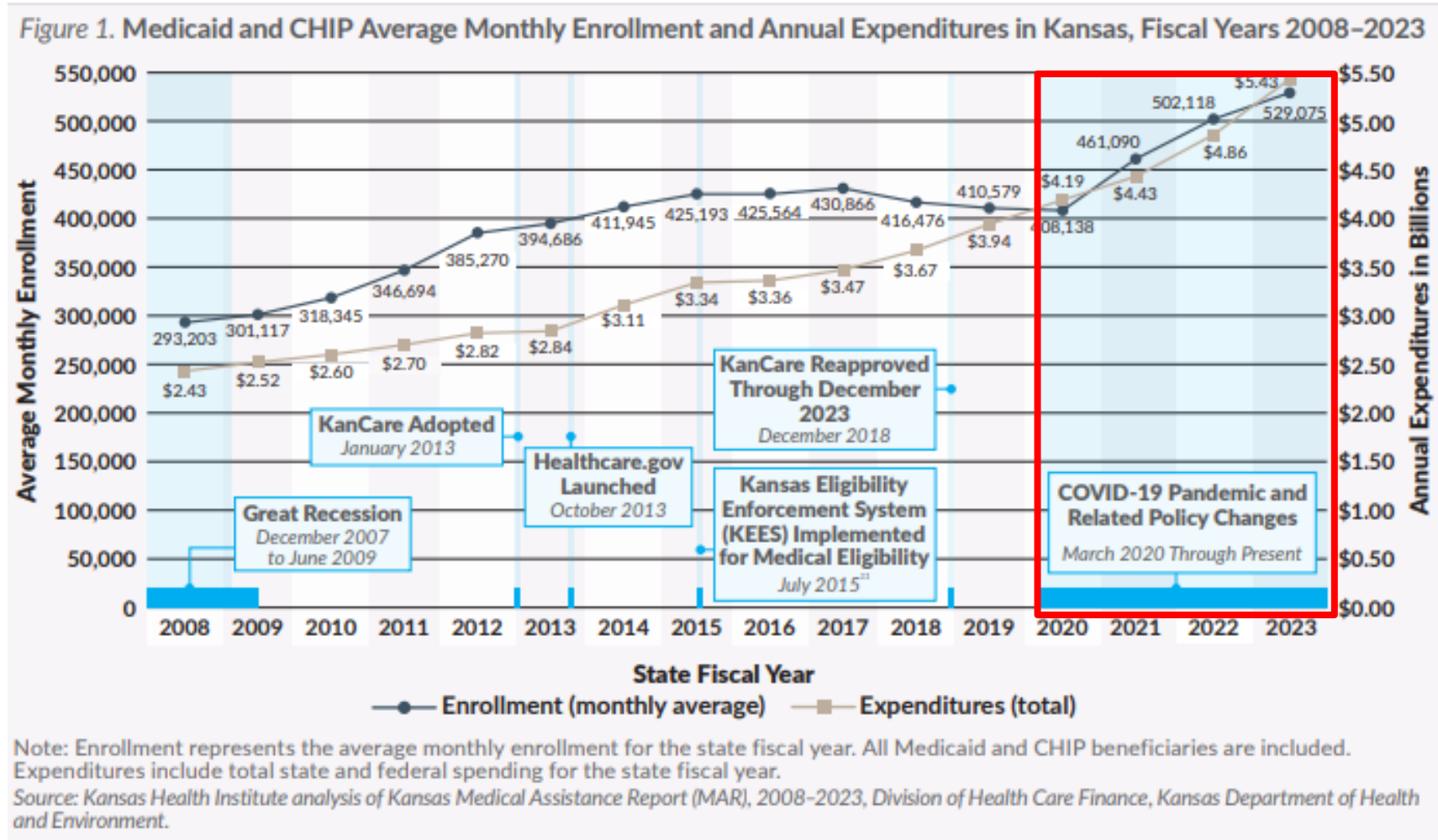
Dually  
Eligible  
77,438

Medicare but  
not Medicaid  
495,442  
Medicare  
Total  
572,880

Medicaid but  
not Medicare  
450,109  
Medicaid  
Total  
529,075



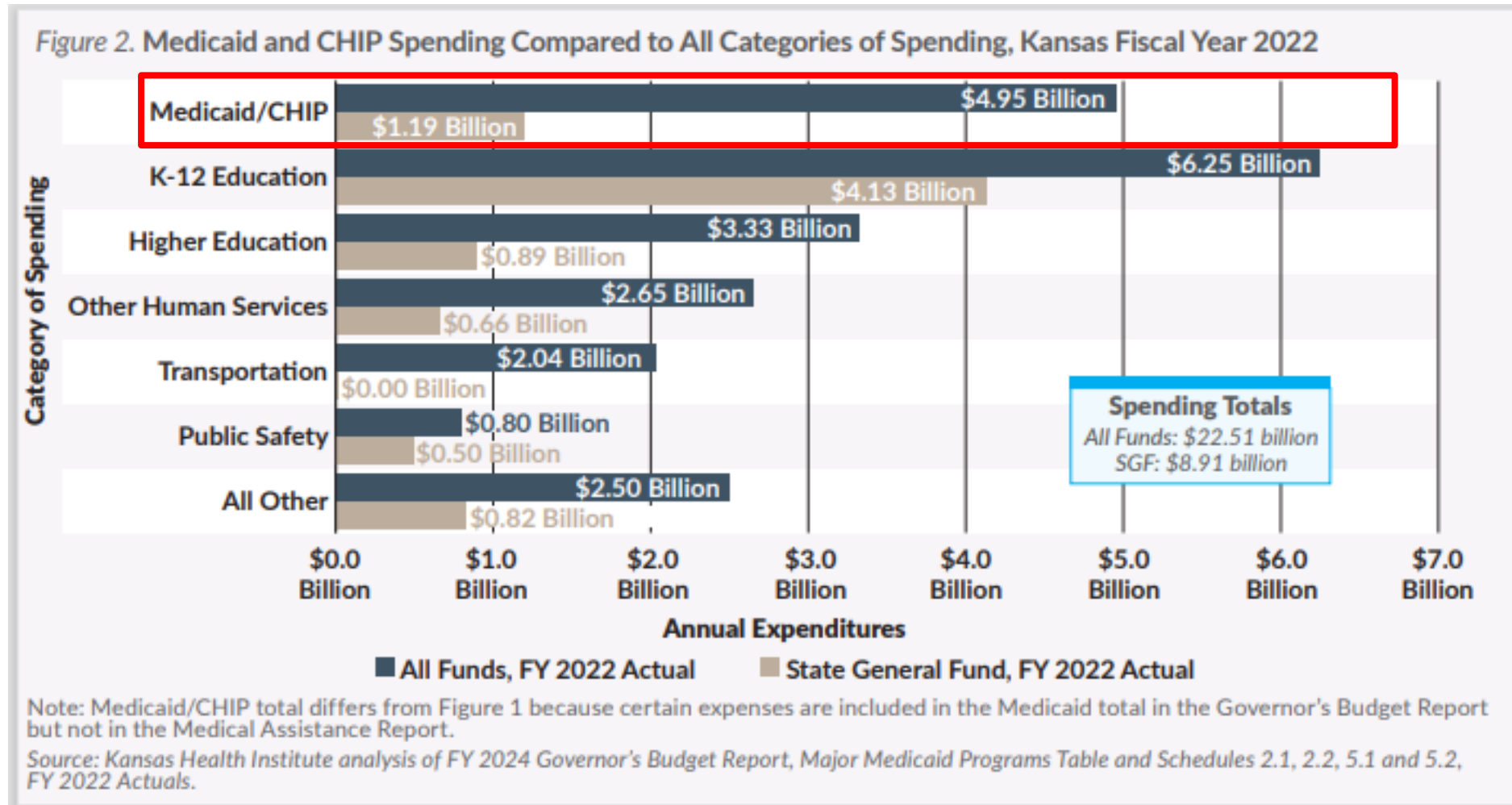
# Medicaid and CHIP Average Monthly Enrollment and Annual Expenditures in Kansas, FY 2008-2023



# Spending



# Medicaid and CHIP Spending Compared to All Categories of Spending, Kansas FY 2022





# Per Capita Annual Cost by KanCare Population, Kansas FY 2023

Figure 5. Per Capita Annual Cost by KanCare Population, Kansas Fiscal Year 2023

Annual Medicaid Spending by Population Group	FY2023
Individuals with Disabilities	\$32,459
Adults Age 65+	\$20,511
Parents/Pregnant Women	\$5,147
Medicaid Children	\$3,391
CHIP	\$2,763
CHIP/Medicaid Children and Families Combined	\$3,644
<b>All Enrollees</b>	<b>\$8,895</b>



# Kansas Medicaid Enrollment and Costs Compared with Other States, Selected Indicators

Figure 6. Kansas Medicaid Enrollment and Costs Compared With Other States, Selected Indicators

	Federal Fiscal Year 2022					Change in Percent of Population Enrolled in Medicaid, FFY 2019-FFY 2022	Change in Spending per Enrollee, FFY 2019-FFY 2022	Change in Percent of Population Enrolled in Medicaid, FFY 2014-FFY 2022	Change in Spending per Enrollee, FFY 2014-FFY 2022
	Average Monthly Medicaid Enrollment	Percent of Population Enrolled in Medicaid	Total Spending on Benefits (billions)	Spending on Benefits per Enrollee	Administrative Cost as Percent of Total Spending				
Colorado*	1,599,514	27.4%	\$11.9	\$7,423	4.6%	26.2%	0.8%	44.4%	27.3%
Iowa*	754,159	23.6%	\$6.6	\$8,770	2.5%	22.7%	2.0%	37.4%	19.3%
Kansas	444,978	15.1%	\$4.3	\$9,666	5.8%	22.2%	-3.0%	20.2%	29.6%
Missouri*	1,234,226	20.0%	\$13.0	\$10,543	3.3%	40.7%	-12.6%	53.9%	-6.1%
Nebraska*	366,346	18.6%	\$3.3	\$8,996	5.6%	47.7%	2.4%	49.0%	19.2%
Oklahoma*	1,121,392	27.9%	\$7.5	\$6,708	2.9%	71.2%	-9.3%	43.9%	8.1%
United States	93,434,713	28.0%	\$792.7	\$8,484	4.0%	24.6%	5.2%	30.3%	24.8%
Medicaid Expansion States*	69,835,364	29.9%	\$617.3	\$9,024	3.9%	20.9%	9.3%	26.5%	31.2%
Non-Medicaid Expansion States	23,590,083	22.6%	\$169.9	\$7,202	3.6%	27.1%	-0.7%	28.3%	13.8%

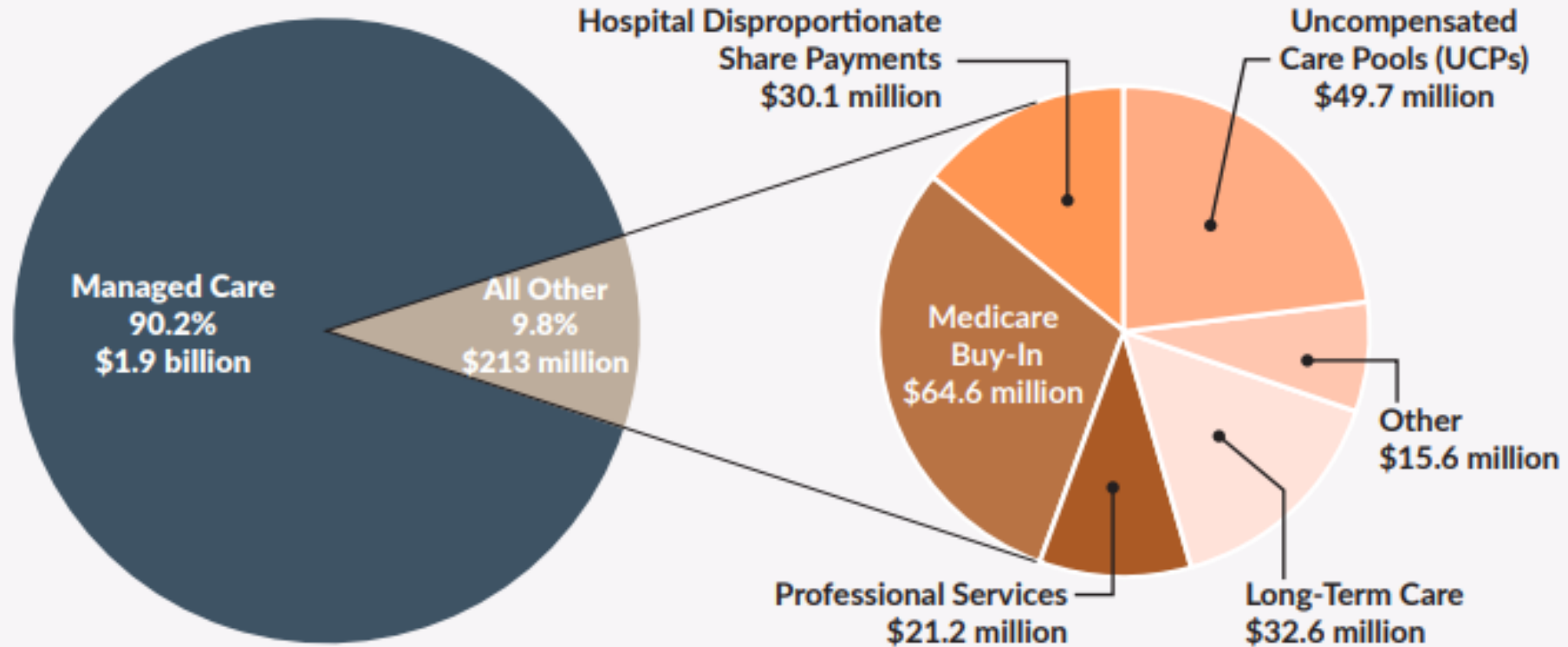
Note: \*Indicates states that adopted Medicaid expansion as of September 2023. Missouri, Nebraska and Oklahoma adopted Medicaid Expansion after September 2019. The states included in the Medicaid Expansion and Non-Medicaid Expansion groups are included due to expansion status as of federal fiscal year (FFY) 2022, which runs from Oct. 1, 2021, through September 30, 2022. The federal fiscal year overlaps with the state fiscal year in Kansas, which runs from July through June. Totals exclude Children's Health Insurance Program (CHIP) enrollment and spending and enrollment and spending in U.S. territories.

Source: Kansas Health Institute analysis of U.S. Census Bureau state population estimates; KFF State Health Facts; Centers for Medicare and Medicaid Services (CMS) Quarterly Medicaid Enrollment Data from the Medicaid Budget and Expenditure System (MBES); and CMS-64 reports.



# Managed Care as a Portion of Total Medicaid and CHIP Expenditures in Kansas, State Funds Only FY 2023

Figure 9. Managed Care as a Portion of Total Medicaid and CHIP Expenditures in Kansas, State Funds Only, Fiscal Year 2023



Note: Long-Term Care includes payments to nursing facilities for mental health. School-based services are included in Professional Services.  
Source: Kansas Health Institute analysis of Kansas Medical Assistance Report (MAR), 2023, from the Division of Health Care Finance, Kansas Department of Health and Environment.



# State Plans, Amendments and Waivers



# State Plans, Amendments and Waivers

- The federal Centers for Medicare and Medicaid Services (CMS) approves a State Plan for the Medicaid and CHIP programs in each state. It is a contract between the state and federal government describing:
  - How it will administer the program
  - What services will be covered
  - What groups will be eligible
  - How much it will reimburse providers
- The State Plan can be changed by an Amendment or Waiver





# Kansas Home and Community-Based Services (HCBS) Waivers, Enrollment, Waiting Lists and Institutional Equivalents, August 2023

Figure 11. Kansas Home and Community-Based Services (HCBS) Waivers, Enrollment, Waiting Lists and Institutional Equivalents, August 2023

Waiver Program	Enrollees	Individuals on Waiting List/ Proposed Recipients	Institutional Equivalent or Level(s) of Care Required
<b>Autism</b> (age 0-5 for initial eligibility; AU)	64	514	Inpatient psychiatric facility for age 21 and under
<b>Brain Injury</b> (age 0-64; BI)	959	0	Traumatic Brain Injury rehabilitation facility and hospital
<b>Frail Elderly</b> (age 65+; FE)	6,994	0	Nursing facility
<b>Intellectual/Developmental Disability</b> (age 5+; I/DD)	8,880	5,096	Intermediate care facility for individuals with intellectual disabilities
<b>Physical Disability</b> (age 16-64; PD)	6,113	2,381	Nursing facility
<b>Serious Emotional Disturbance</b> (age 4-18; SED)	3,298	0	Inpatient psychiatric facility for age 21 and under
<b>Technology Assisted</b> (age 0-21; TA)	766	0	Hospital





# New in the 2024 Primer!



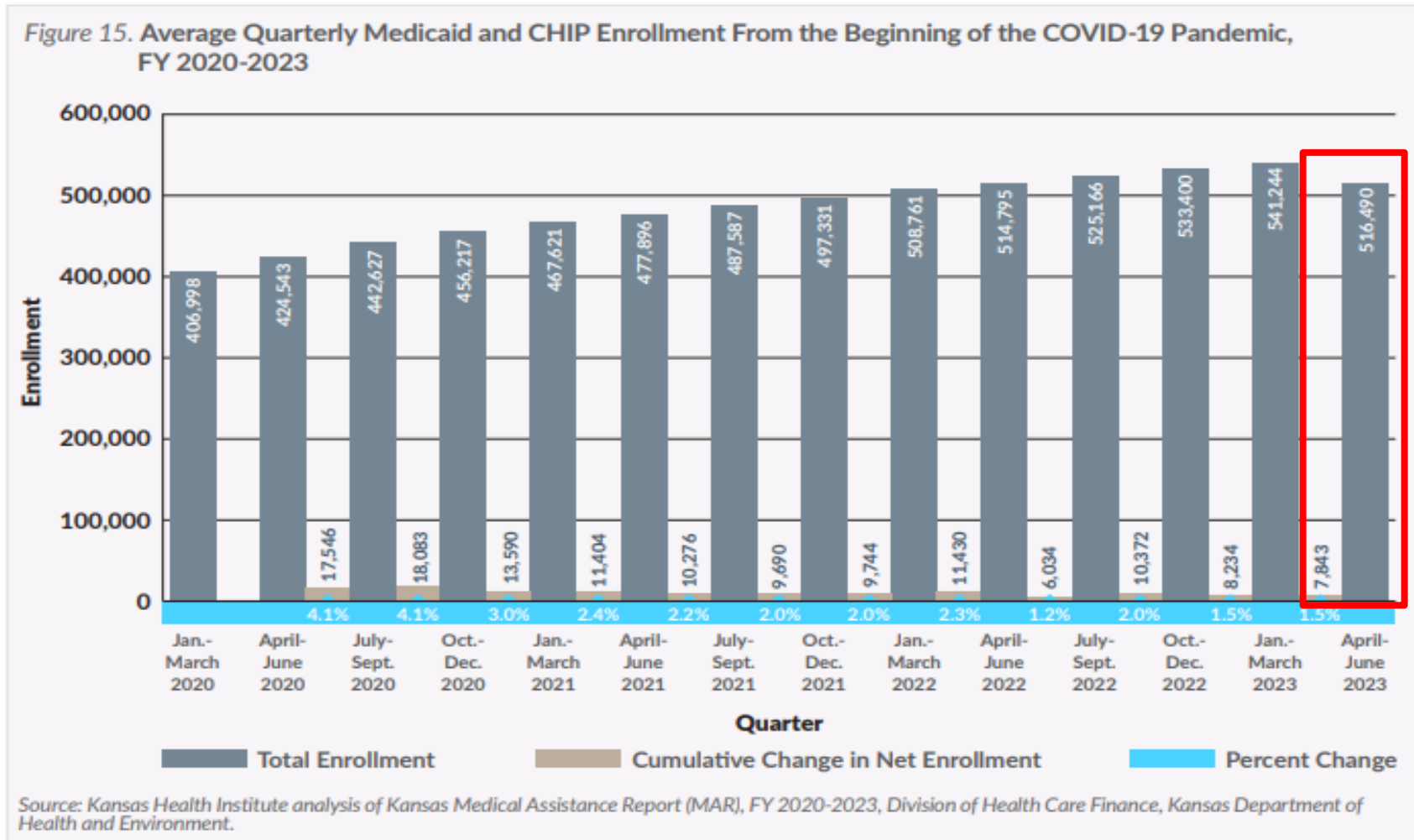
# KanCare and the End of the Public Health Emergency

- Continuous Coverage is no longer in effect.
  - Unwinding process is underway.
- Telehealth Services
- Postpartum Coverage Extension for Pregnant Women

## 2025-2027 MCO Contract Procurement Process



# Average Quarterly Medicaid and CHIP Enrollment from the Beginning of the COVID-19 Pandemic, FY 2020-2023



# Questions and Discussion with the Authors



KANSAS HEALTH INSTITUTE

*Informing Policy. Improving Health.*

# Panelists

---

## Diving Deeper into the Primer with the Experts



**Kari Bruffett, Facilitator**

*President and CEO,  
KHI*



**Sheena Schmidt**

*Senior Analyst, KHI*



**Melissa Renick**

*Assistant Director for  
Research, KLRD*



**Leighann Thone**

*Research Analyst,  
KLRD*



# Resources

---

[The Kansas Health Institute](#)

[The Kansas Legislative Research Department](#)

[The Kansas Department of Health and Environment](#)

[KanCare and Medicaid](#)

[The Kansas Department for Aging and Disability Services](#)

[The Centers for Medicare and Medicaid Services](#)





# THANK YOU!

## Any Questions?

Contact Sheena Schmidt at [sschmidt@khi.org](mailto:sschmidt@khi.org)



KANSAS HEALTH INSTITUTE

*Informing Policy. Improving Health.*

# Connect With Us



**KANSAS HEALTH INSTITUTE**

*Informing Policy. Improving Health.*

[www.khi.org](http://www.khi.org)

@KHIorg



212 SW 8<sup>th</sup> Avenue | Topeka, KS | 785.233.5443