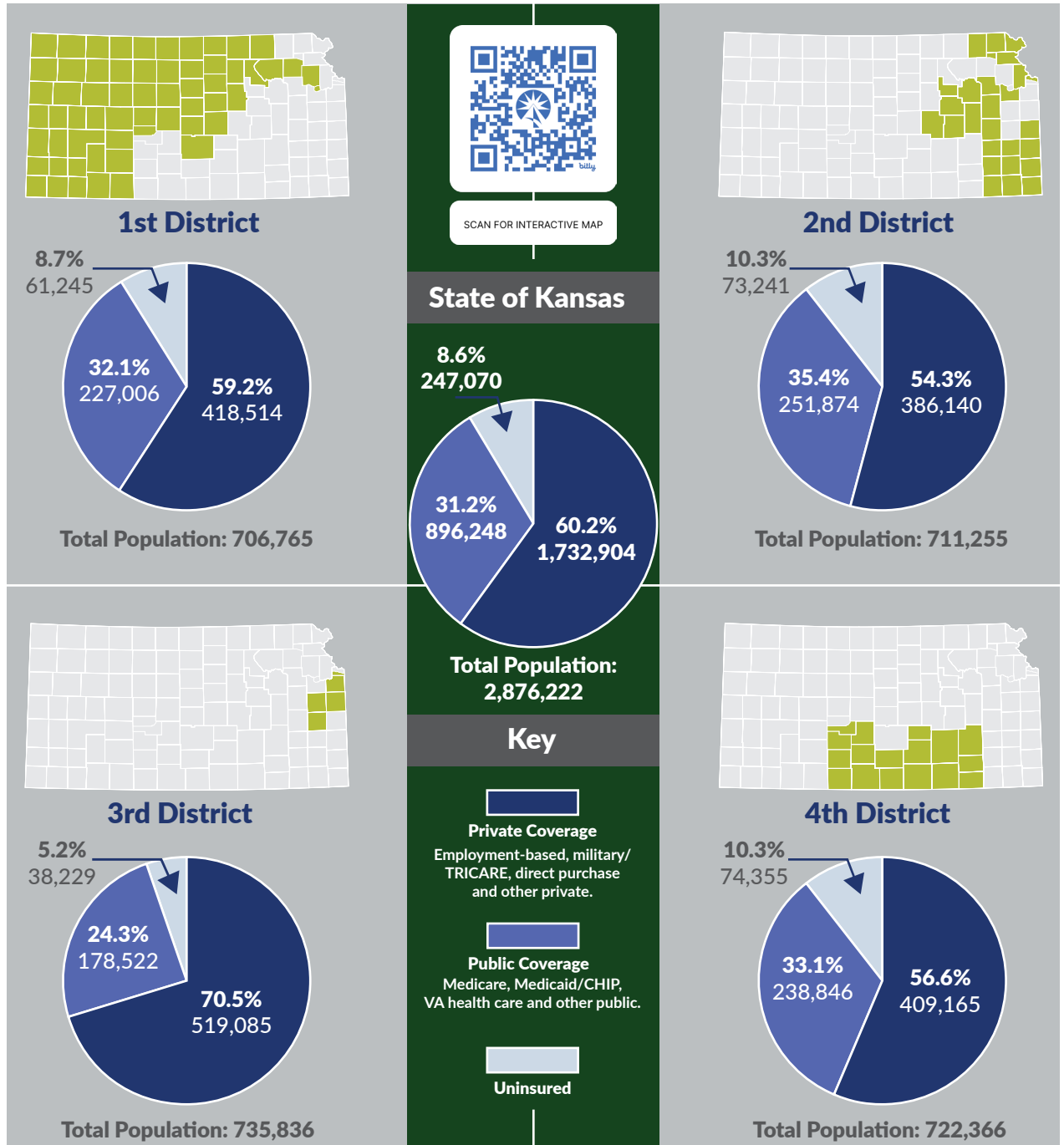


# INSURANCE COVERAGE BY KANSAS CONGRESSIONAL DISTRICT

Using data from the U.S. Census Bureau, this fact sheet details health insurance coverage for Kansans in 2022 by congressional district (Figure 1) as well as by age group (Figure 2, page 2).

Figure 1. Health Insurance Coverage by Congressional District, 2022



Note: Civilian non-institutionalized Kansas residents = 2,876,222. Estimates are for residents within the congressional district boundaries of the 118th Congress which are in effect from Jan. 3, 2023 – Jan. 3, 2025. Percentages may not sum to 100 percent due to rounding. Margins of error for combined population subgroups are not available, so statistical tests for significant differences cannot be conducted. Because American Community Survey (ACS) respondents can report more than one type of insurance, KHI utilizes a standard hierarchy of public, private and then uninsured.

Source: Kansas Health Institute analysis of data from the U.S. Census Bureau 2022 1-year American Community Survey table B27010, available at [bit.ly/47aTeXY](https://bit.ly/47aTeXY)

Figure 2. Health Insurance Coverage by Age and Congressional District, 2022

2022	Total Population	Private Coverage		Public Coverage		Uninsured	
		Number	Percentage	Number	Percentage	Number	Percentage
<b>Kansas Overall</b>	<b>2,876,222</b>	<b>1,732,904</b>	<b>60.2%</b>	<b>896,248</b>	<b>31.2%</b>	<b>247,070</b>	<b>8.6%</b>
Children, Age 0-18	730,274	466,272	63.8%	226,075	31.0%	37,927	5.2%
Adults, Age 19-64	1,657,703	1,250,662	75.4%	200,106	12.1%	206,935	12.5%
Adults, Age 65+	488,245	15,970	3.3%	470,067	96.3%	2,208	0.5%
<b>1st District</b>	<b>706,765</b>	<b>418,514</b>	<b>59.2%</b>	<b>227,006</b>	<b>32.1%</b>	<b>61,245</b>	<b>8.7%</b>
Children, Age 0-18	172,757	104,650	60.6%	61,115	35.4%	6,992	4.0%
Adults, Age 19-64	409,628	309,462	75.5%	46,150	11.3%	54,016	13.2%
Adults, Age 65+	124,380	4,402	3.5%	119,741	96.3%	237	0.2%
<b>2nd District</b>	<b>711,255</b>	<b>386,140</b>	<b>54.3%</b>	<b>251,874</b>	<b>35.4%</b>	<b>73,241</b>	<b>10.3%</b>
Children, Age 0-18	187,097	108,797	58.2%	65,982	35.3%	12,318	6.6%
Adults, Age 19-64	400,890	273,587	68.2%	67,052	16.7%	60,251	15.0%
Adults, Age 65+	123,268	3,756	3.0%	118,840	96.4%	672	0.5%
<b>3rd District</b>	<b>735,836</b>	<b>519,085</b>	<b>70.5%</b>	<b>178,522</b>	<b>24.3%</b>	<b>38,229</b>	<b>5.2%</b>
Children, Age 0-18	181,934	144,939	79.7%	31,041	17.1%	5,954	3.3%
Adults, Age 19-64	433,520	369,721	85.3%	31,986	7.4%	31,813	7.3%
Adults, Age 65+	120,382	4,425	3.7%	115,495	95.9%	462	0.4%
<b>4th District</b>	<b>722,366</b>	<b>409,165</b>	<b>56.6%</b>	<b>238,846</b>	<b>33.1%</b>	<b>74,355</b>	<b>10.3%</b>
Children, Age 0-18	188,486	107,886	57.2%	67,937	36.0%	12,663	6.7%
Adults, Age 19-64	413,665	297,892	72.0%	54,918	13.3%	60,855	14.7%
Adults, Age 65+	120,215	3,387	2.8%	115,991	96.5%	837	0.7%

Note: Civilian non-institutionalized Kansas residents = 2,876,222. Estimates are for residents within the congressional district boundaries of the 118th Congress which are in effect from Jan. 3, 2023 - Jan. 3, 2025. Percentages may not sum to 100 percent due to rounding. Margins of error for combined population subgroups are not available, so statistical tests for significant differences cannot be conducted. Because American Community Survey (ACS) respondents can report more than one type of insurance, KHI utilizes a standard hierarchy of public, private and then uninsured.

Source: Kansas Health Institute analysis of data from the U.S. Census Bureau 2022 1-year American Community Survey table B27010, available at [bit.ly/47aTeXY](https://bit.ly/47aTeXY)

### ABOUT THE FACT SHEET

This brief is based on work by Angela S Wu, M.S., Kaci Cink and Wen-Chieh Lin, Ph.D. It is available online at [khi.org/articles/insurance-coverage-by-kansas-congressional-district-2023](https://khi.org/articles/insurance-coverage-by-kansas-congressional-district-2023).

### KANSAS HEALTH INSTITUTE

The Kansas Health Institute supports effective policymaking through nonpartisan research, education and engagement. KHI believes evidence-based information, objective analysis and civil dialogue enable policy leaders to be champions for a healthier Kansas. Established in 1995 with a multiyear grant from the Kansas Health Foundation, KHI is a nonprofit, nonpartisan educational organization based in Topeka.

Copyright® Kansas Health Institute 2023. Materials may be reprinted with written permission. Reference publication number KHI/23-39.



212 SW 8th Avenue | Suite 300  
Topeka, Kansas | 66603-3936



785.233.5443



khi.org



/KHIorg



@KHIorg



KHIorg