



KANSAS HEALTH INSTITUTE

PERSON-CENTERED CARE AND AGING IN PLACE IN RURAL KANSAS

November 2, 2023

Kansas Health Institute

Who We Are



- Nonprofit, nonpartisan educational organization based in Topeka.
- Established in 1995 with a multi-year grant by the Kansas Health Foundation.
- Committed to convening meaningful conversations around tough topics related to health.



KHI Team



Kari Bruffett

CEO



Emma Uridge

Research Assistant



Hina Shah

*Senior Analyst and
Portfolio Strategist*



Lyndsey Burkhart

*Event Coordinator/
Communication Assistant*



What is Person-Centered Care?

Includes:

- Care that's guided and informed by people' goals, preferences, and values
- Success measured by individual-reported outcomes
- Integrated and coordinated care across health systems, providers, and care settings
- Managing chronic and complex conditions and needs
- Relationships built on trust and a commitment to long-term well-being



Aging in Place: Growing Older at Home



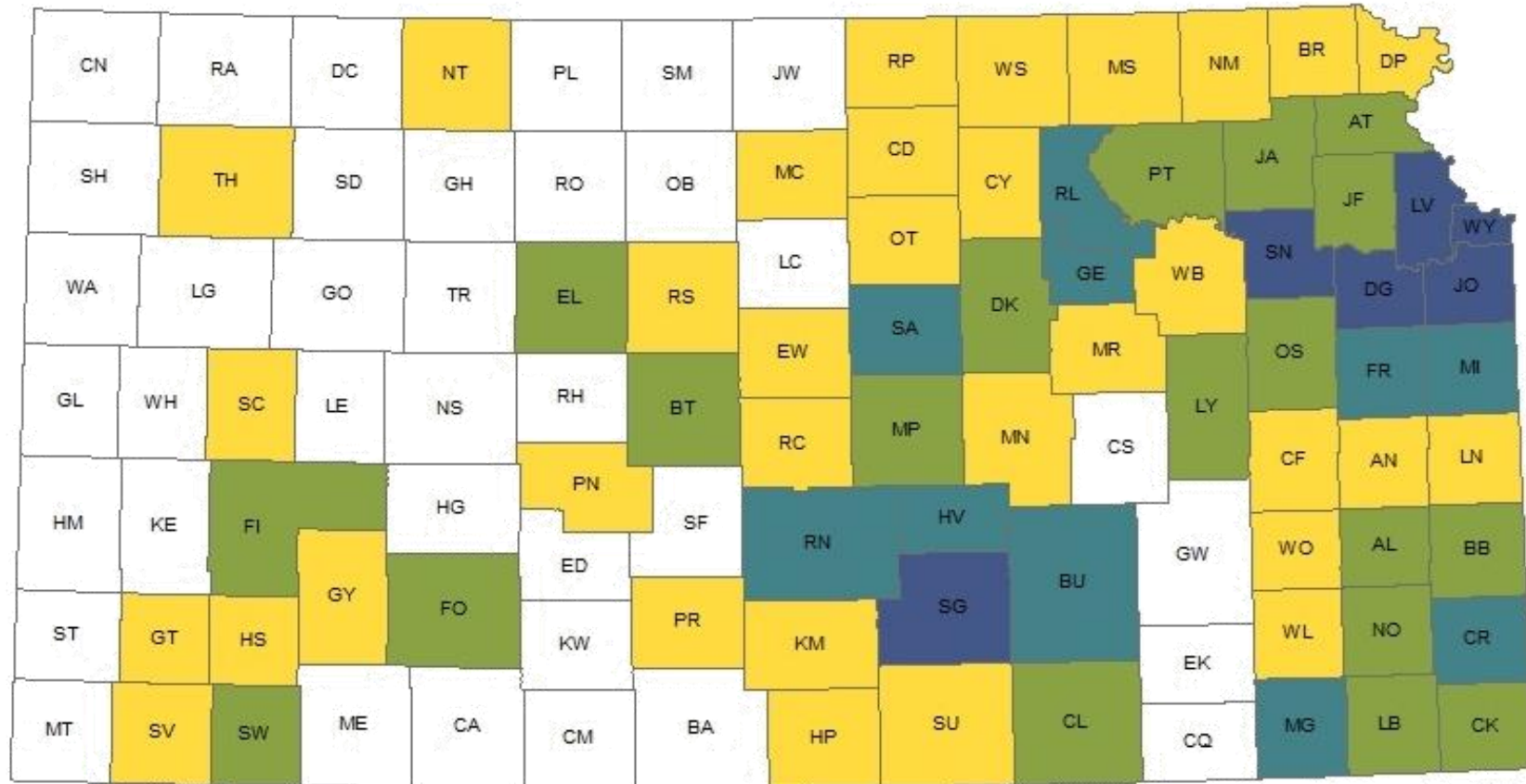
Defined as: The ability to live in one's own home and community safely, independently, and comfortably, regardless of age, income, or ability level.

62.5 percent of rural older adults would prefer to receive care in their own homes.

Source: *Preferences for Long-Term Care Arrangements Among Rural and Urban Older Adults (May 2021)*. University of Minnesota Rural Health Research Center.



Kansas Population Density, 2019



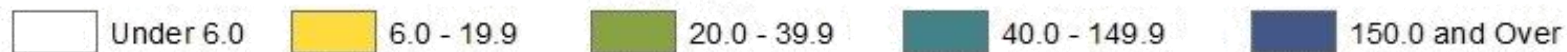
Persons per Square Mile:

- Frontier = Under 6
- Rural = 6-19.9
- Densely-Settled Rural = 20-39.9
- Semi-Urban = 40-149.9
- Urban = 150 or more

Source: Kansas Department of Health and Environment, 2019

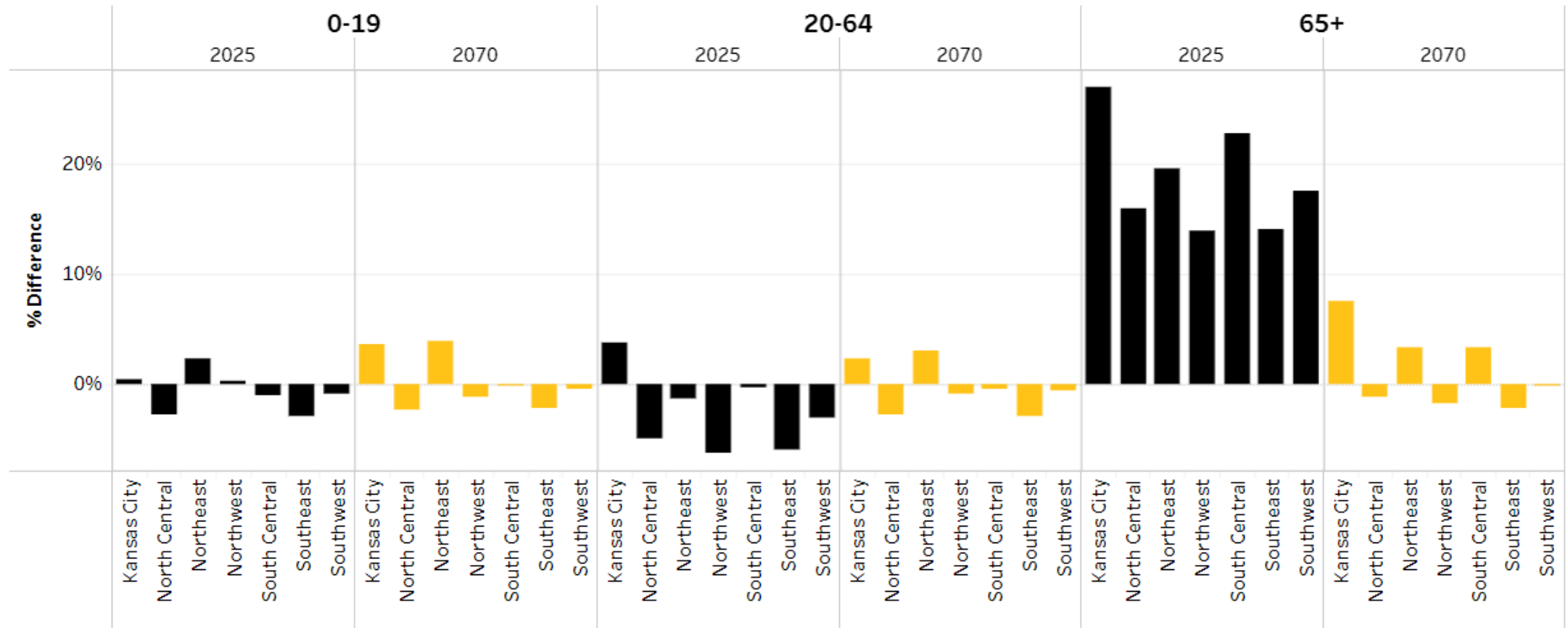
State Rate: 35.6

Legend



Aging Population in Kansas, 2021

Age Range - Five-Year Growth Rates

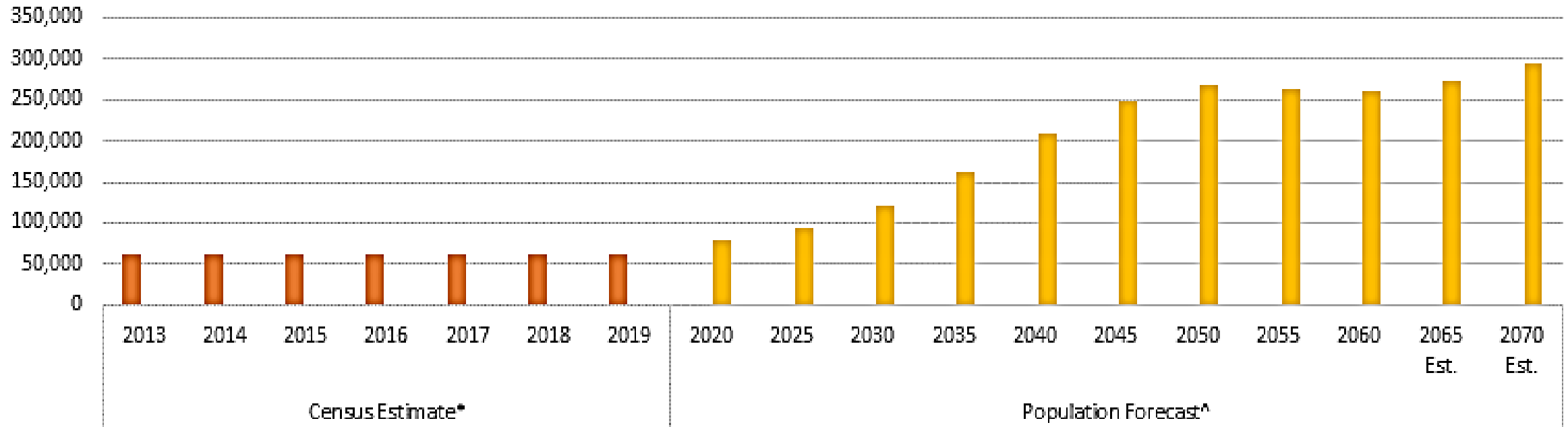


Source: Wichita State University Center for Economic Development and Business Research, 2021.



85+ Population in Kansas Projection, 2019

85+ Population in Kansas



*Census Estimates- Census.gov

^ Population Forecast- Wichita State University Center for Economic Development and Research- kansaseconomy.org

■ 85+ Census Estimate ■ 85+ Forecast



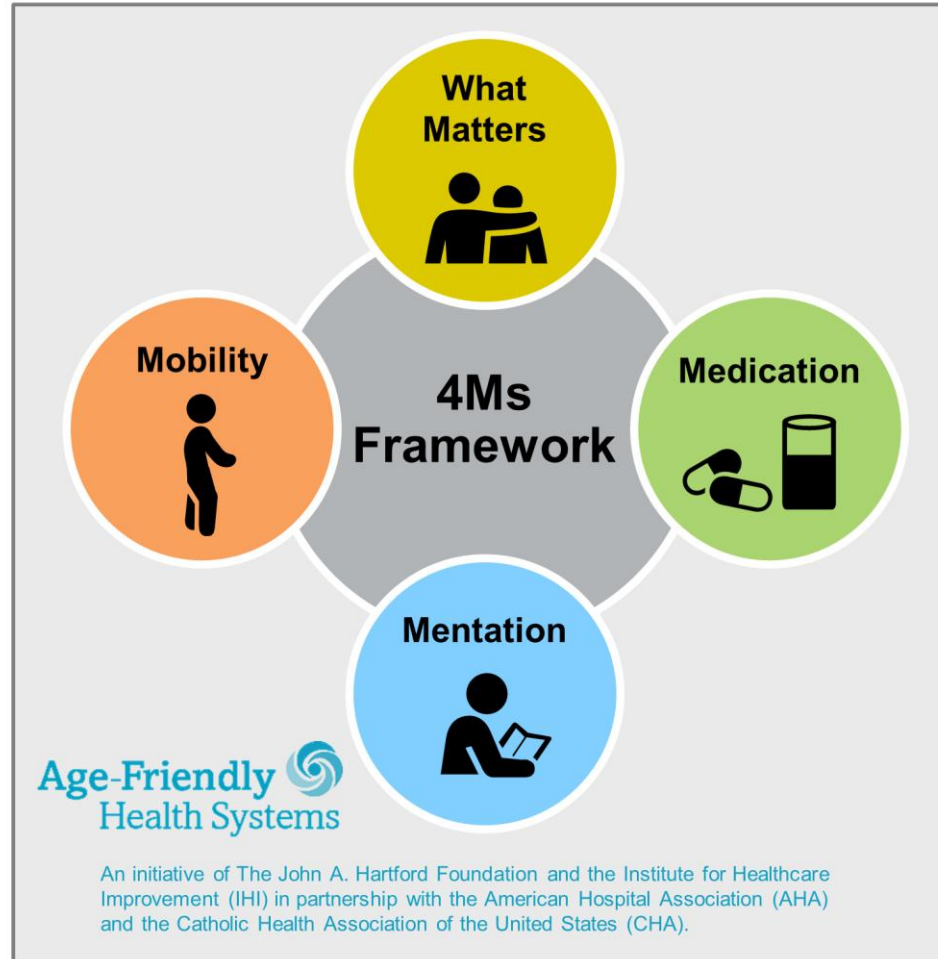
Age-Friendly Public Health Systems (AFPHS)



KANSAS HEALTH INSTITUTE

Informing Policy. Improving Health.

What Does It Mean to Be Age-Friendly (4Ms)?



For related work, this graphic may be used in its entirety without requesting permission.
Graphic files and guidance at ihi.org/AgeFriendly



Embracing the Model for Rural America

National Rural Health Association launched National Rural Age-Friendly Initiative in 2023 to:

- Create and convene a national rural age-friendly interest group to determine priorities and best practices for aging rural communities.
- Disseminate rural age-friendly information, including resources and best practices.
- Integrate dedicated rural age-friendly health tracks within educational events; provide TA to state rural health associations to create statewide strategies addressing aging issues.
- Develop an age-friendly community health worker training curriculum that facilitates evidence-based modules for rural communities and develops an implementation plan for an intervention pilot project.



Framework for Supporting Healthy Aging (6Cs)



Examples from a 6Cs State

In Mississippi:

Healthy Aging Champion Program

- Joint project of Mississippi Public Health Association, the state department of health and AARP Mississippi.
- Older adults trained about common health and chronic health conditions among older adults; disseminate public health messaging and resources; conduct walkability audits.
- Peer-led model meets people where they are in community settings.

Healthy Aging Data Report

- 82 individual county reports
- 125 indicators for each county



KHI Selected to Support Age-Friendly Public Health Systems

In partnership with Trust for America's Health (TFAH) and National Network of Public Health Institutes (NNPHI):

1. Collaboration with Kansas Department of Health and Environment (KDHE), Kansas Department for Aging and Disability Services (KDADS), and stakeholders.
2. Action plan development through 6Cs Framework.
3. Goal to elevate healthy aging as a core public health issue, with work to be completed by spring 2026.



Recommendations from The Senior Care Task Force Report: Creating a Blueprint for Senior Care in Kansas



KANSAS HEALTH INSTITUTE

Informing Policy. Improving Health.

Overview of Kansas Senior Care Task Force

- Task Force established under 2021 HB 2114 sunset on June 30, 2023.
- Statute directs Task Force to study eight topics.
- **The final report** includes recommended improvements regarding the well-being and health of Kansas seniors, with recommended changes to state statutes, rules and regulations, policies and programs.
- Prioritized recommendations into Tier I (High Priority & Impact), II and III



The Collaboration

Senior Care Task Force

Mix of Legislative and Non-Legislative Members

Quality of Care &
Protective Services
Workgroup

Access to Care
Workgroup

Workforce Subgroup



Panel One: Leaders in Serving Older Kansans



KANSAS HEALTH INSTITUTE

Informing Policy. Improving Health.

Panelists

Panel One: Leaders in Serving Older Kansans



Monte Coffman

*Executive Director,
Windsor Holdings Inc.*



Emilie Rains

*Executive Director,
Bluestem PACE*



Jessie Piper

*Co-Bureau Director of
Family Health, Kansas
Department of Health
and Environment*



Chrisy Khatib

*Deputy Director, Adult
Protective Services*



Michele Heydon

*Commissioner, Long term
Services and Supports,
Kansas Department for
Aging and Disability
Services*



Panel Two: Leaders in Aging Policy and Programs



KANSAS HEALTH INSTITUTE

Informing Policy. Improving Health.

Panelists

Panel Two: Leaders in Aging Policy and Programs



Sec. Janet Stanek

*Secretary of Kansas
Department of Health and
Environment*



Sen. Kristen O'Shea

*Senator, Kansas
Legislature*



Scott Brunner

*Deputy Secretary of Hospitals
and Facilities, Kansas
Department for Aging and
Disability Services*



Jan Kimbrell

*Representative, Silver
Haired Legislature*



THANK YOU!

Any Questions?



KANSAS HEALTH INSTITUTE

Informing Policy. Improving Health.

Check Out Our New Podcast, *Health on the Plains*

Use Phone Camera to Scan QR code for Podcast.

- Focus on health and well-being in rural Kansas
- Guests represent a wide range of backgrounds related to rural health
- Released twice monthly
- Watch on YouTube or listen wherever you regularly listen to podcasts



Get Insights into Public Health Transformation

Use Phone Camera to Scan QR code for blog.

- Explores the challenges and opportunities faced by the public health sector and introduces a roadmap for transformation
- Released monthly
- Sign up to receive the blog delivered to your inbox, khi.org



Connect With Us



KANSAS HEALTH INSTITUTE

Informing Policy. Improving Health.

www.khi.org

@KHIorg



212 SW 8th Avenue | Topeka, KS | 785.233.5443