



KANSAS HEALTH INSTITUTE

# 2023 County Health Rankings & Roadmaps

April 6, 2023



# Hello!

---

**Wyatt J. Beckman, M.P.H., C.H.E.S**

Senior Analyst

Kansas Health Institute

State Team Lead for County Health Rankings  
& Roadmaps in Kansas

Email: [wbeckman@khi.org](mailto:wbeckman@khi.org)

Phone: (785) 233-5443



KANSAS HEALTH INSTITUTE  
*Informing Policy. Improving Health.*

[khi.org](http://khi.org)

# Acknowledgments

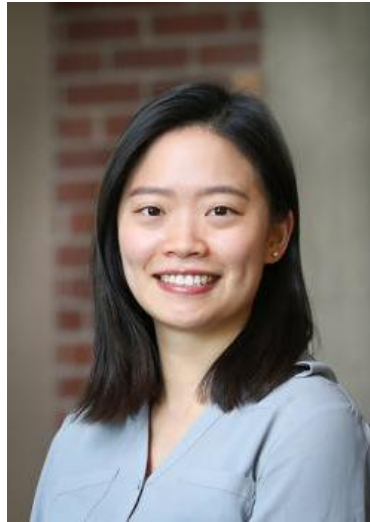
---

We recognize the following individuals for their contributions:



**Kaci Cink**

*Research Assistant*



**Angela Wu**

*Analyst*



**Stewart Cole**

*Graphic Designer*



**Wen-Chieh Lin**

*Director of Research*





# Acknowledgments

---

We recognize the following individuals for their contributions:



**Lyndsey Burkhart**

*Event Coordinator/  
Communication  
Assistant*



**Theresa Freed**

*Director of Strategic  
Communication and  
Engagement*



**Kari Bruffett**

*President & CEO*



**Cathy McNorton**

*Senior Communication  
Specialist &  
Publications Strategist*



**Barb Hersh**

*Communication and  
Events Assistant*



# Who We Are

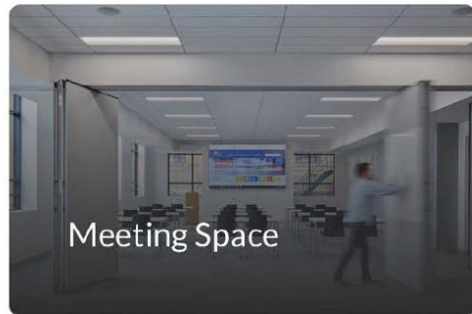
---



- Nonprofit, nonpartisan educational organization based in Topeka.
- Established in 1995 with a multi-year grant by the Kansas Health Foundation.
- Committed to convening meaningful conversations around tough topics related to health.



# Our Services



<https://www.khi.org/services/>



KANSAS HEALTH INSTITUTE  
Informing Policy. Improving Health.

[khi.org](https://www.khi.org)



# Agenda

---

## In this session, we'll cover:

1. County Health Rankings & Roadmaps Background
2. Things to Keep in Mind for Interpretation
3. Kansas Data & County Profiles
4. New for 2023
5. Live Demonstration of CHR&R Website
6. Your Questions



# CHR&R Background



KANSAS HEALTH INSTITUTE

*Informing Policy. Improving Health.*



# About County Health Rankings & Roadmaps

---

## County Health Rankings & Roadmaps

Building a Culture of Health, County by County



University of Wisconsin  
Population Health Institute  
UNIVERSITY OF WISCONSIN  
SCHOOL OF MEDICINE AND PUBLIC HEALTH



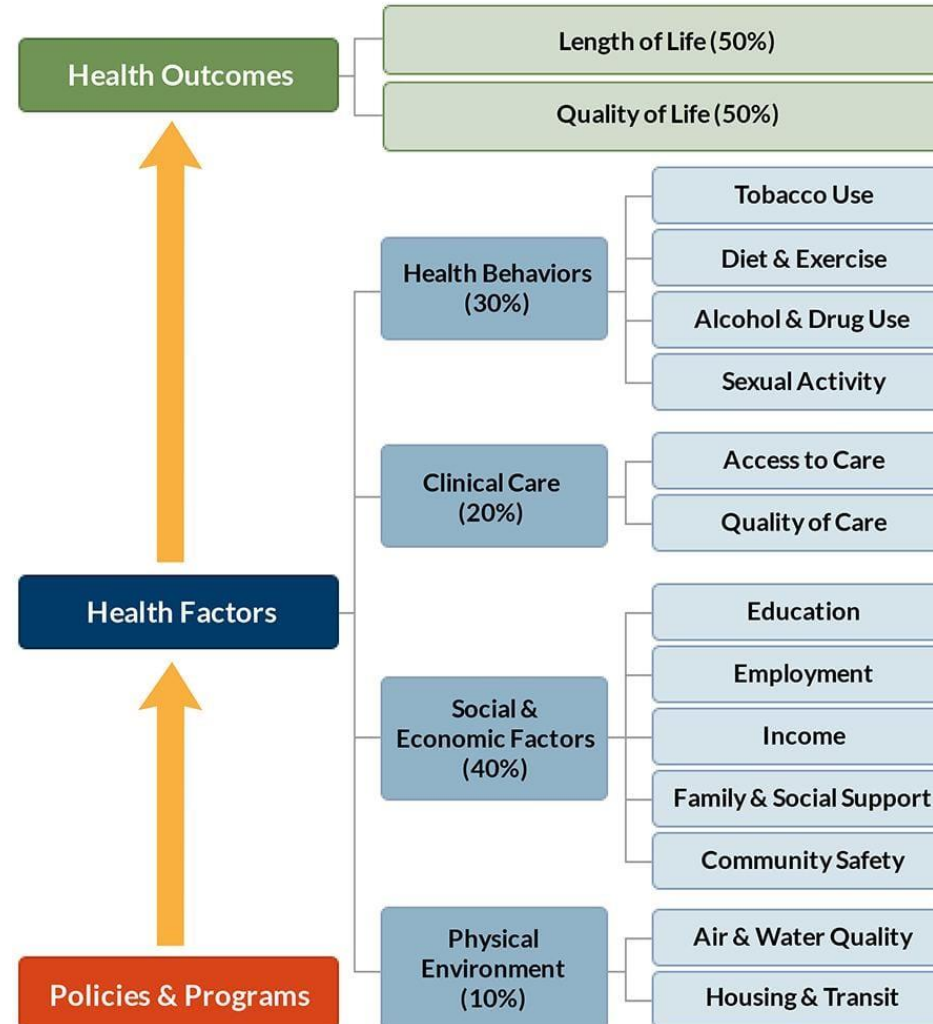
Robert Wood Johnson  
Foundation



KANSAS HEALTH INSTITUTE  
*Informing Policy. Improving Health.*

[khi.org](http://khi.org)

# County Health Rankings Model



County Health Rankings model © 2014 UWPHI

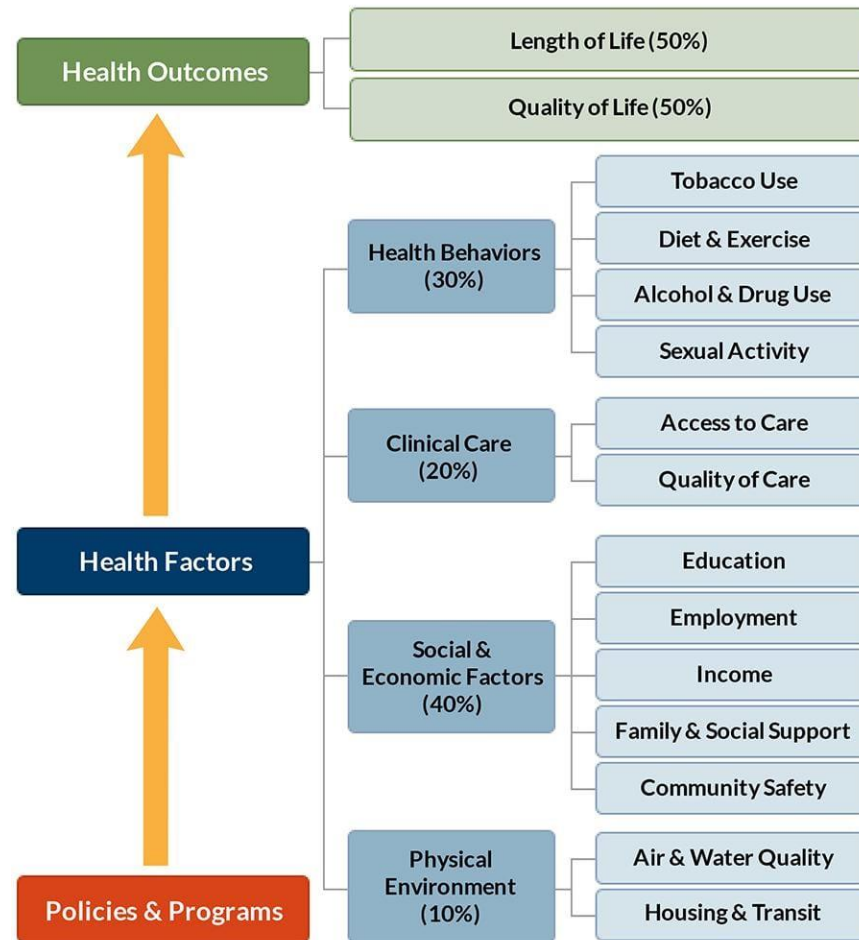


KANSAS HEALTH INSTITUTE

Informing Policy. Improving Health.

[khi.org](http://khi.org)

# County Health Rankings Model



County Health Rankings model © 2014 UWPHI

29 measures → Health Factors Ranking

*What are the opportunities for community members to be healthy **in the future**?*

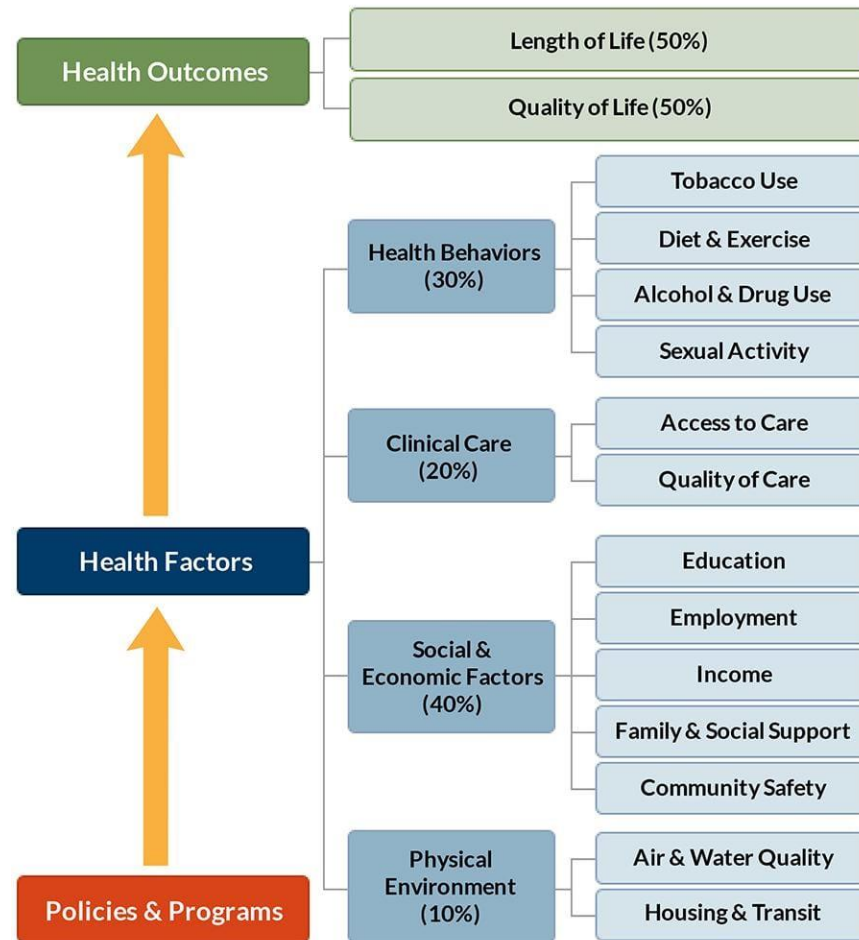


KANSAS HEALTH INSTITUTE

Informing Policy. Improving Health.

khi.org

# County Health Rankings Model



County Health Rankings model © 2014 UWPHI

5 measures → Health Outcomes Ranking

*How healthy are community members  
in a county **now**?*



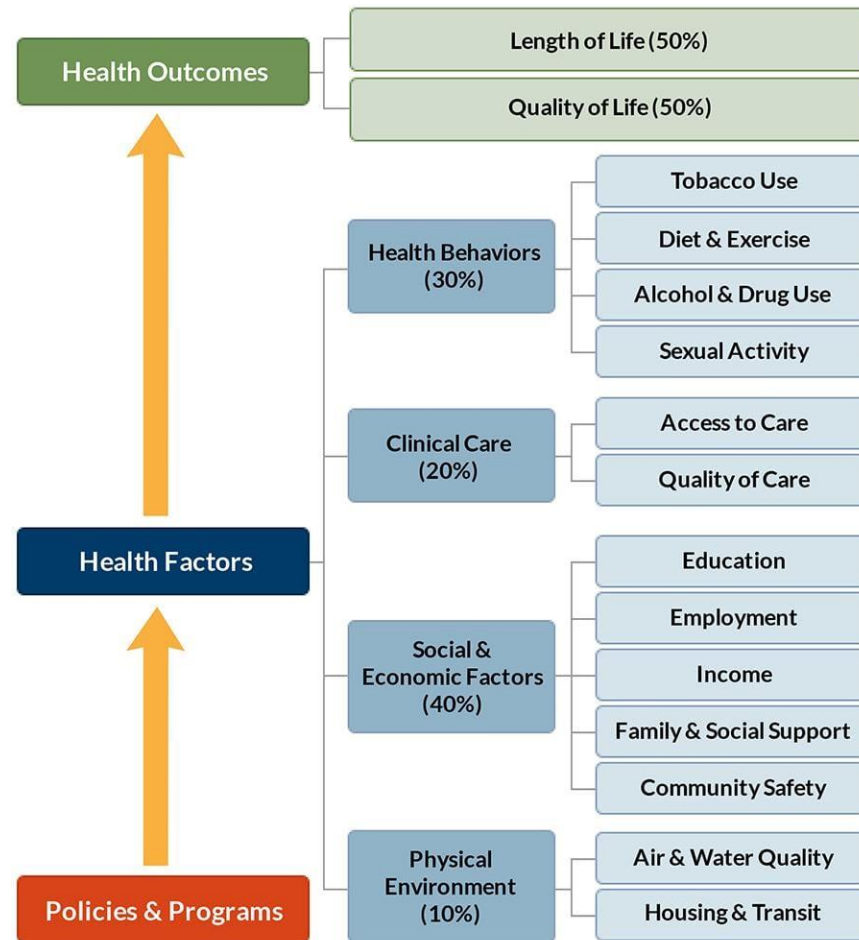
KANSAS HEALTH INSTITUTE

Informing Policy. Improving Health.

khi.org



# County Health Rankings Model



County Health Rankings model © 2014 UWPHI

5 measures → Health Outcomes Ranking

*How healthy are community members  
in a county **now**?*

29 measures → Health Factors Ranking

*What are the opportunities for community  
members to be healthy **in the future**?*



KANSAS HEALTH INSTITUTE

Informing Policy. Improving Health.

khi.org

# Considerations When Interpreting Rankings



KANSAS HEALTH INSTITUTE

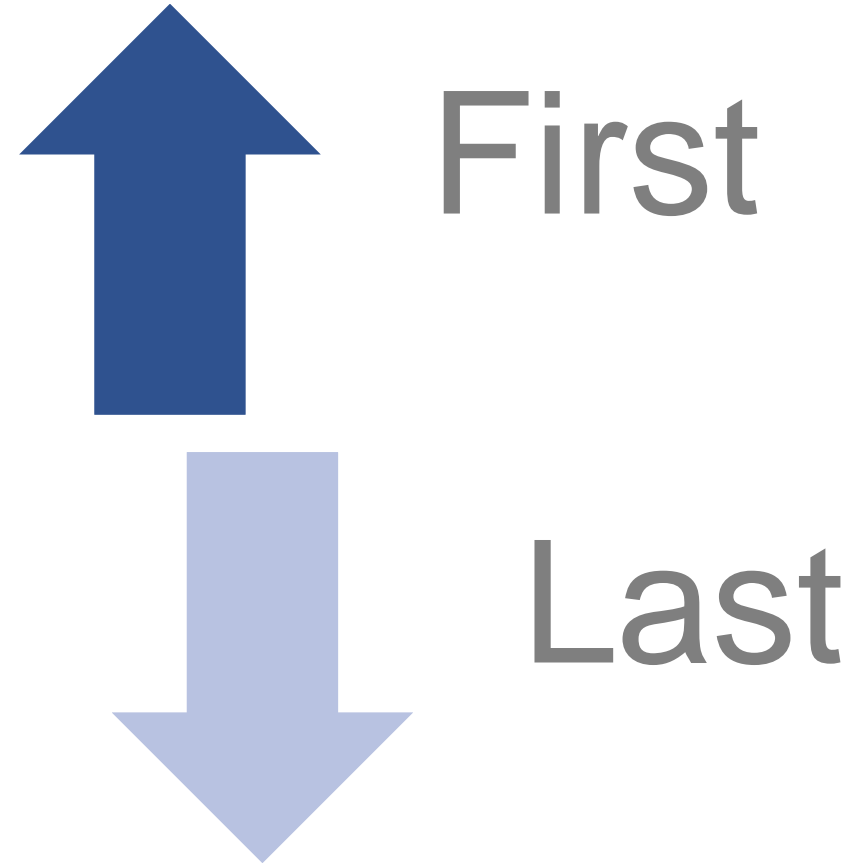
*Informing Policy. Improving Health.*

# Rankings Considerations

---

## Things to Keep in Mind

The rank of a county depends on what is happening in other counties, meaning rankings are a **relative measure** of health.

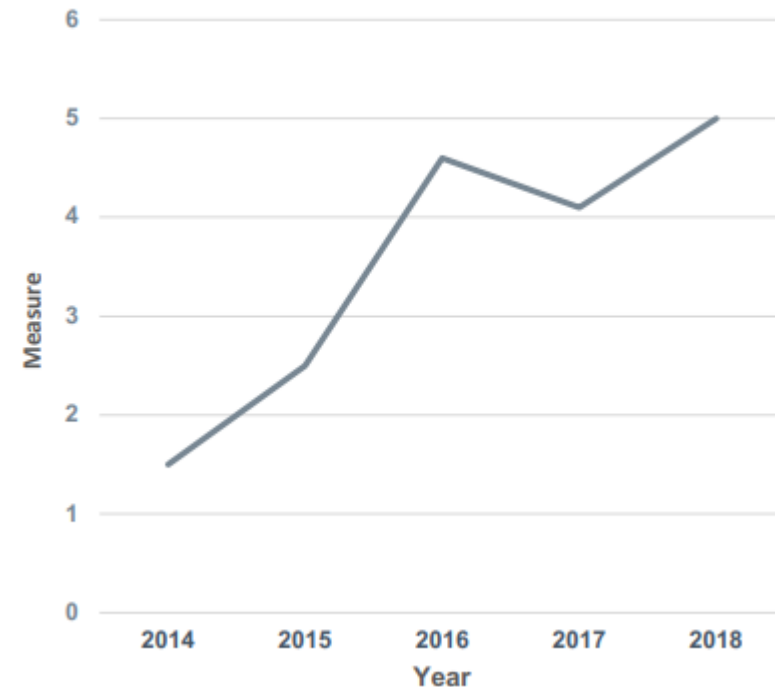


# Rankings Considerations

---

## Things to Keep in Mind

To monitor progress over time, it is important to examine **the underlying measures** because not all changes in rank translate into actual declines or improvements in health.



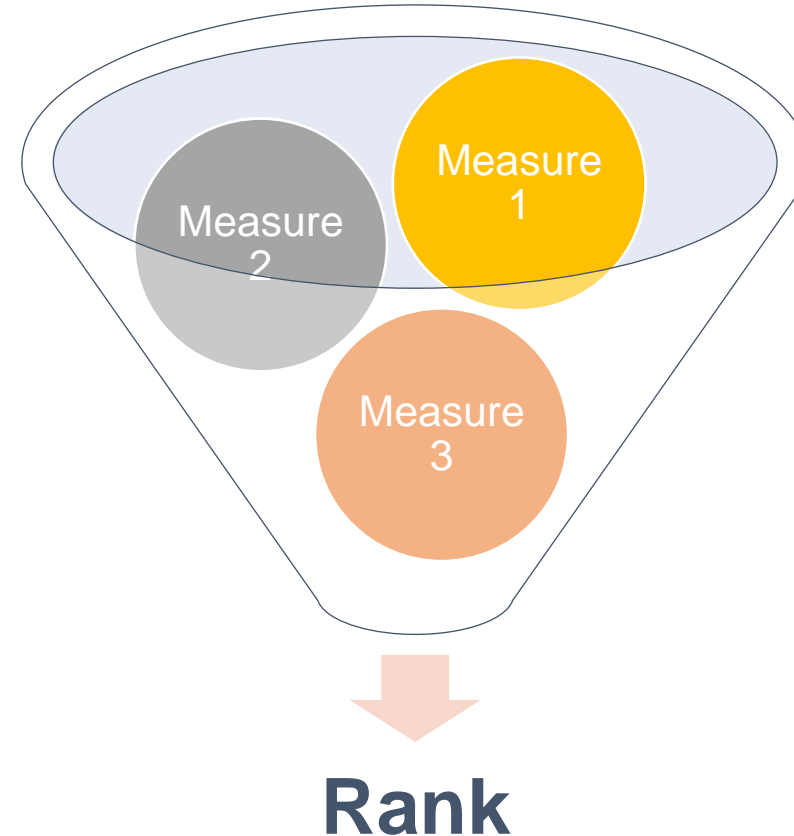


# Rankings Considerations

---

## Things to Keep in Mind

The measures that are used to compile the rankings are **diverse**, and their sources and methodologies can change over time.

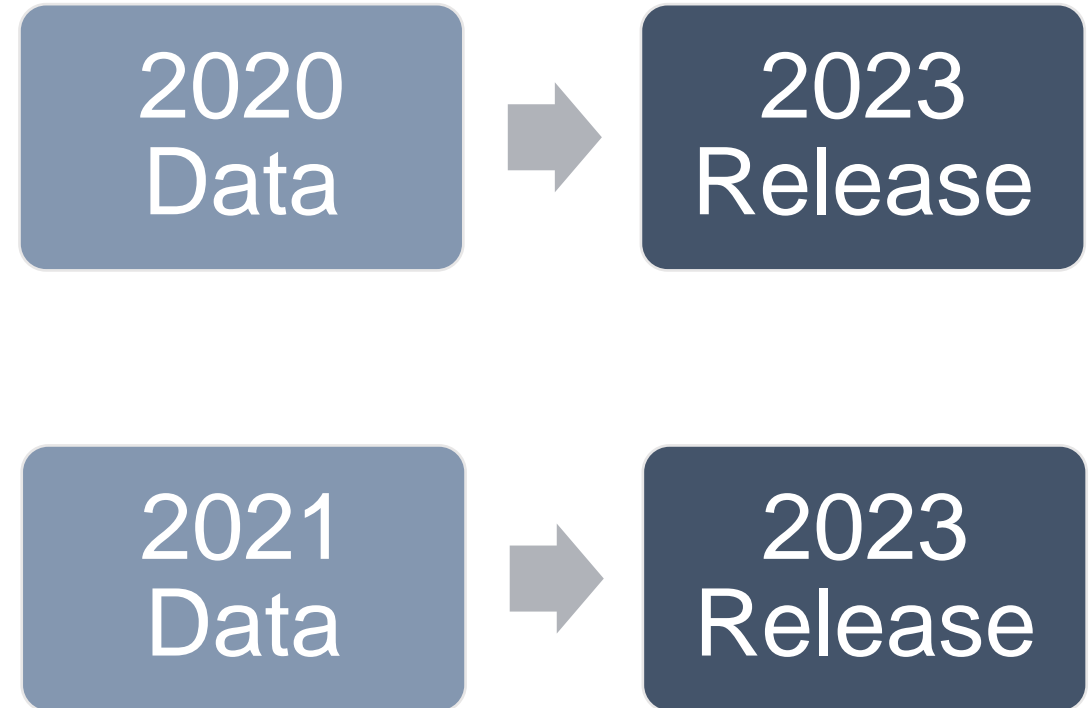


# Rankings Considerations

---

## Things to Keep in Mind

While the most recently available data are used in the rankings, the edition year of the ranking is not the same as the associated data year(s), meaning **there is a lag in the data**.

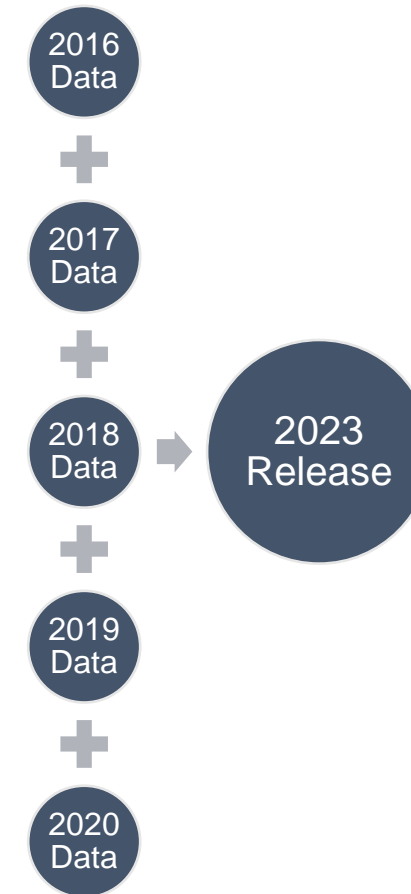


# Rankings Considerations

---

## Things to Keep in Mind

For some measures, **multiple years of data** are combined to achieve a sufficient sample size and provide a reliable estimate.



# Kansas Data & County Profiles



KANSAS HEALTH INSTITUTE

*Informing Policy. Improving Health.*

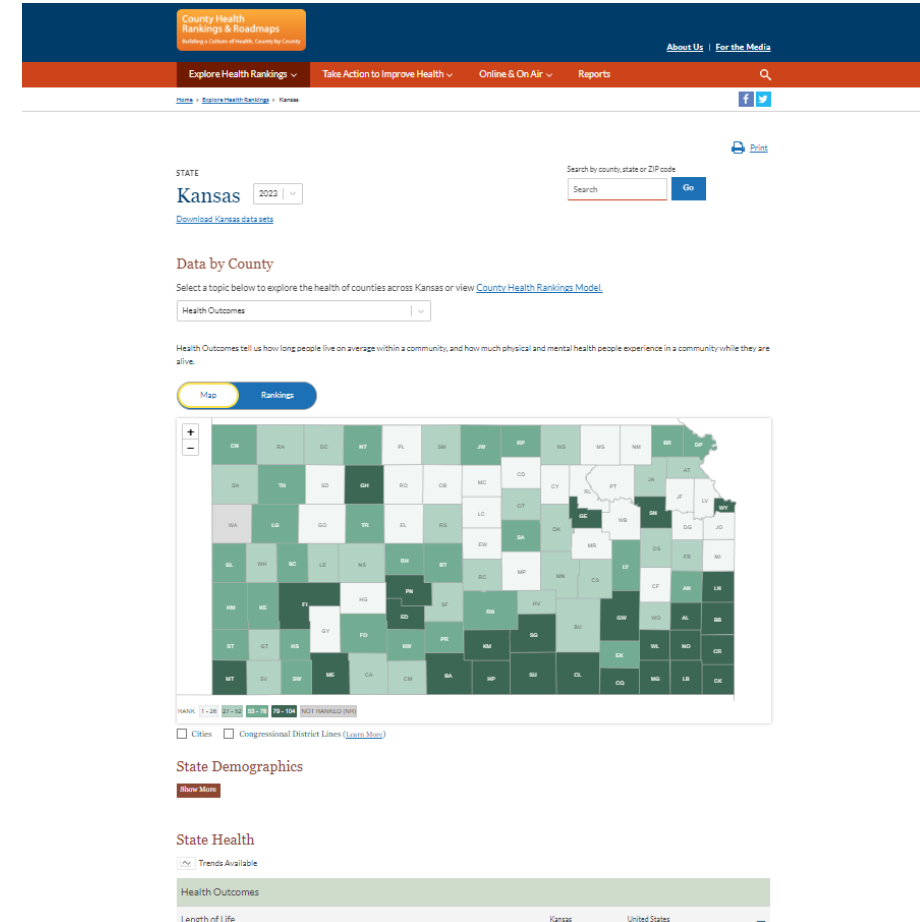


# Kansas Snapshot

## 2023 State Snapshot for Kansas



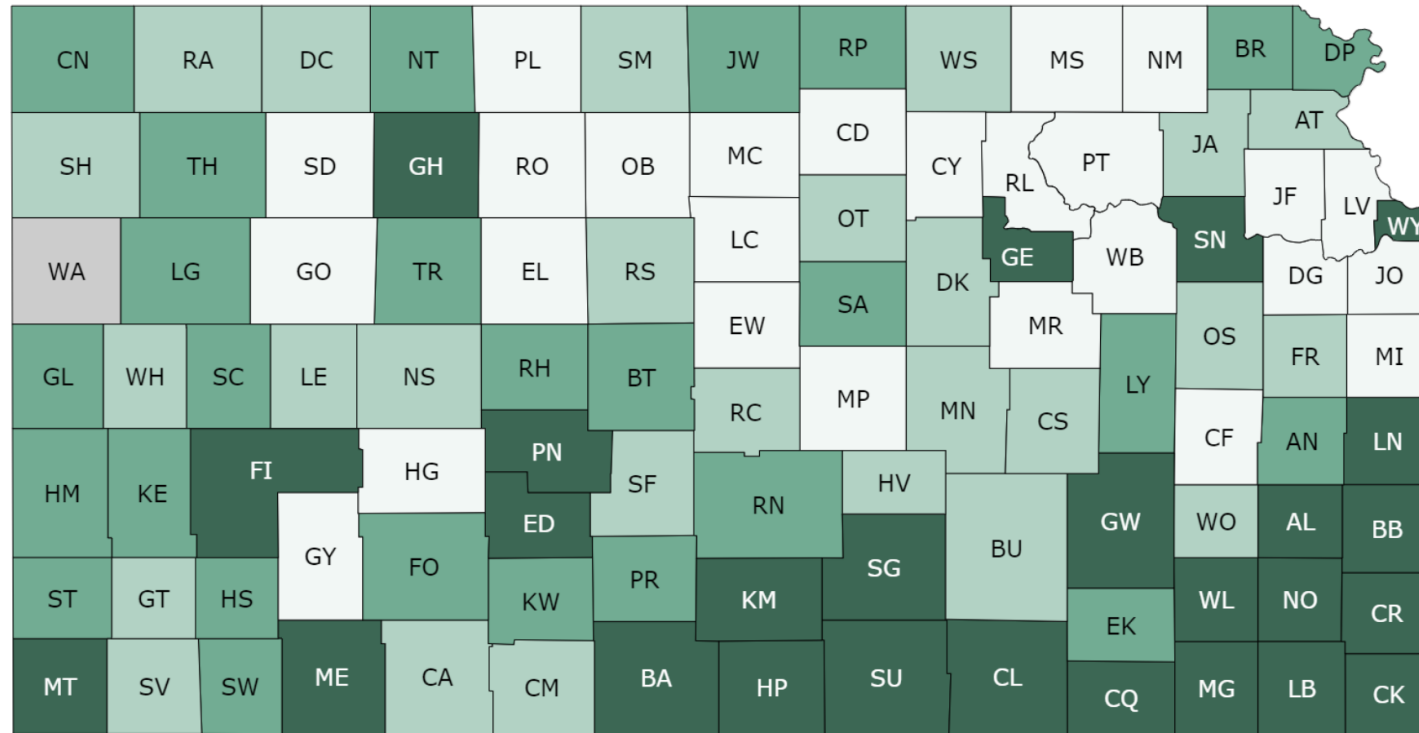
<https://www.countyhealthrankings.org/explore-health-rankings/kansas>



KANSAS HEALTH INSTITUTE  
Informing Policy. Improving Health.

# Health Outcomes

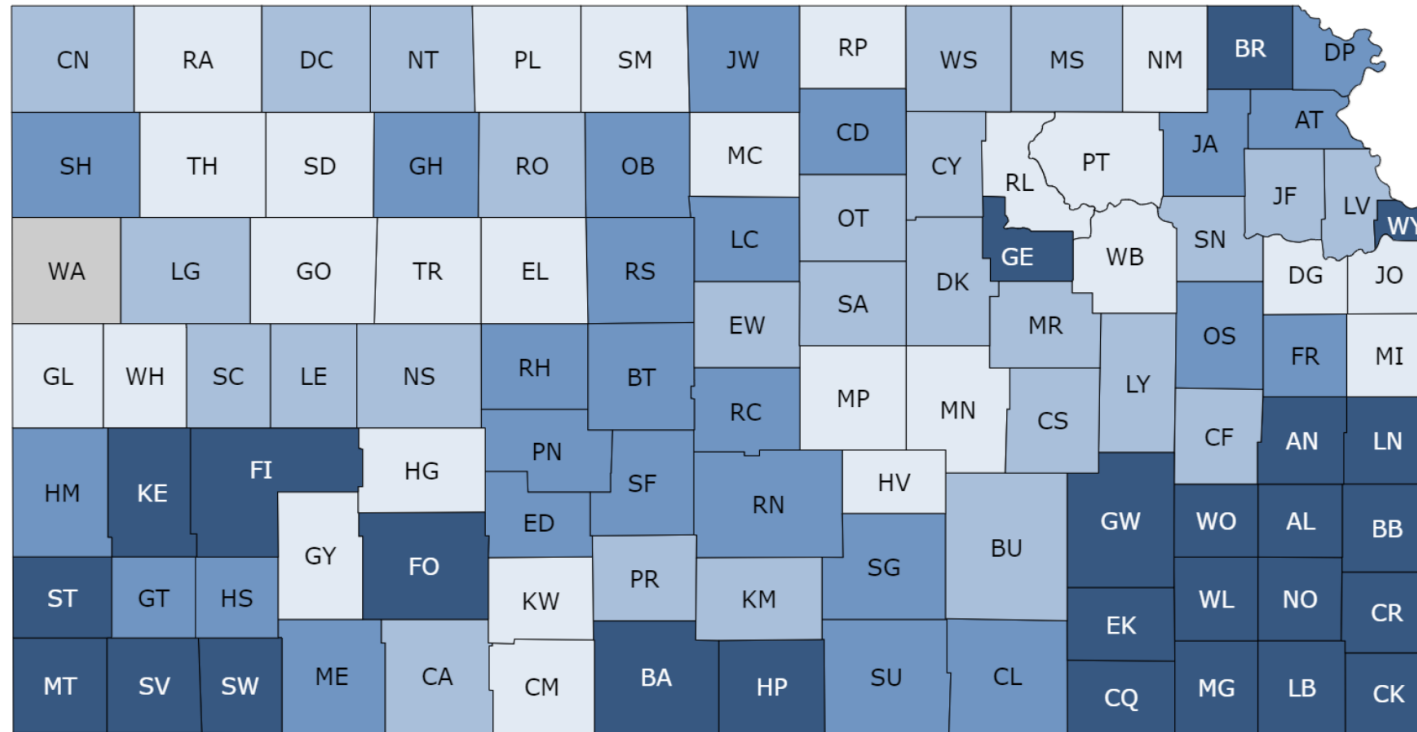
# 2023 Health Outcomes - Kansas



Health Outcome Ranks

# Health Factors

## 2023 Health Factors - Kansas



Health Factor Ranks

1 to 26	27 to 52	53 to 78	79 to 104
---------	----------	----------	-----------



# County Profiles

## Find Your County Profile



Share & Print



Documents & Downloads

[2023 County Health Rankings National Findings Report](#)

[2023 All Kansas Counties](#)

[2023 Allen County](#)

[2023 Anderson County](#)

[2023 Atchison County](#)

[2023 Barber County](#)

[2023 Barton County](#)

[2023 Bourbon County](#)

[2023 Brown County](#)

[2023 Butler County](#)

[2023 Chase County](#)

[2023 Chautauqua County](#)

[2023 Cherokee County](#)

[2023 Cheyenne County](#)



<https://www.khi.org/articles/2023-county-health-rankings-county-profiles/>



KANSAS HEALTH INSTITUTE

Informing Policy. Improving Health.

[khi.org](https://www.khi.org)

# County Profiles

## Ness County

28

Health Factors Rank

35

Health Outcomes Rank

Population: 2,672

2023

Empty cells: Shaded cells indicate measures were new additions (B), omitted due to methodology change (F), or are unavailable due to low reliability.

Source data have not been updated since the 2022 County Health Rankings Release.

N/A: State is not ranked against counties.



	2019	2020	2021	2022	2023	Kansas 2023
Number of Counties Ranked	102	104	104	104	104	104
<b>Health Outcomes- Rank</b>	<b>90</b>	<b>51</b>	<b>55</b>	<b>45</b>	<b>35</b>	<b>N/A</b>
<b>Length of Life- Rank</b>	<b>98</b>	<b>38</b>	<b>39</b>	<b>44</b>	<b>44</b>	<b>N/A</b>
Premature death (years of potential life lost, per 100,000) <sup>a</sup>	11065					7458
<b>Quality of Life- Rank</b>	<b>38</b>	<b>52</b>	<b>58</b>	<b>41</b>	<b>23</b>	<b>N/A</b>
% Reporting poor or fair health, adults <sup>a</sup>		18	18	13	13	
Average number of poor physical health days, adults <sup>a</sup>		4	4	3	3	
Average number of poor mental health days, adults <sup>a</sup>		4	4	4	4	
% Low birthweight, <2,500 grams <sup>b</sup>	5.8	6.9	6.8	6	6	7.2
<b>Health Factors- Rank</b>	<b>27</b>	<b>22</b>	<b>35</b>	<b>32</b>	<b>28</b>	<b>N/A</b>
<b>Health Behaviors- Rank</b>	<b>40</b>	<b>26</b>	<b>46</b>	<b>41</b>	<b>49</b>	<b>N/A</b>
% Smokers, adults <sup>a</sup>			20	18	19	17
% Obese, adults age 20 and older <sup>a</sup>				37	37	36
Food environment index, 0 (worst) to 10 (best) <sup>a</sup>	7.9	8	7.9	7.8	7.9	7
% Physically inactive, adults age 20 and older <sup>a</sup>				30	24	21
% Access to exercise opportunities <sup>a</sup>						80
% Excessive drinking, adults <sup>a</sup>			19	18	20	20
% Driving deaths with alcohol-involvement <sup>a</sup>	33	14	14	20	20	19
Sexually transmitted infection rate, per 100,000 population	200			182		502
Teen birth rate, per 1,000 females age 15-19 <sup>a</sup>	27	28	26	28	28	22
<b>Clinical Care- Rank</b>	<b>37</b>	<b>73</b>	<b>87</b>	<b>63</b>	<b>27</b>	<b>N/A</b>
% Uninsured, population under age 65	13	16	14	16	15	10
Primary care physicians rate, per 100,000 population	68	70	70	73	108	79
Dentists rate, per 100,000 population	0	0	0	0	0	62
Mental health providers rate, per 100,000 population						224
Preventable hospital stays rate, per 100,000 Medicare enrollees	3035	4467	5863	3460	1872	2708
% Mammography screening, Medicare females age 65-74	53	48	42	51	55	42
% Flu vaccinations, Medicare enrollees	33	33	37	38	40	51
<b>Social &amp; Economic Factors- Rank</b>	<b>30</b>	<b>20</b>	<b>26</b>	<b>32</b>	<b>37</b>	<b>N/A</b>
% High school completion, adults age 25 and older <sup>b</sup>			91	92	91	92
% With some college, adults age 25-44	63	64	68	72	71	71
% Unemployed, population age 16 and older	2.9	2.8	2.5	3.4	2.2	3.2
% Children in poverty	15	14	13	14	13	14
Income inequality ratio, 80th to 20th percentile	4.3	4	4.3	3.9	3.5	4.4
% Children in single-parent households <sup>a</sup>			13	16	14	21
Membership associations rate, per 10,000 population	30.4	31.4	31.7	29.1	28.9	13.2
Injury death rate, per 100,000 population <sup>a</sup>	140	129	153	162	162	78
<b>Physical Environment- Rank</b>	<b>10</b>	<b>13</b>	<b>10</b>	<b>9</b>	<b>7</b>	<b>N/A</b>
Average daily density of fine particulate matter	7.1	7.1	5.1	6.4	5.8	6.7
Drinking water violations <sup>c</sup>	No	No	No	No	No	
% Households with severe housing problems	7	8	9	8	7	13
% Driving alone to work	76	77	75	75	73	79
% Long commute - driving alone	15	16	16	19	16	22

This document was prepared by the staff at the Kansas Health Institute. If you would like more information about County Health Rankings & Roadmaps, please contact Wyatt Beckman at (785) 233-5443 or email at [wbeckman@khi.org](mailto:wbeckman@khi.org).

## Ness County

28

Health Factors Rank

35

Health Outcomes Rank

The annual County Health Rankings provide a snapshot of the health of Kansas counties. The Rankings are made up of two summary scores: **Health Factors** (which measure issues that can shape the health outcomes) and **Health Outcomes** (which measure length and quality of life). The following tables illustrate the "drivers," or measures with the greatest impact on ranking position, for this county.

### What do these drivers mean?

The drivers indicate the measures with the greatest impact on the ranking position. Drivers labeled with a green plus sign are measures on which the county performed particularly well. Drivers labeled with a red minus sign indicate priority areas which, if improved, could have the greatest impact on improving the rankings of the county.

### Health Factors: Drivers with greatest impact on ranking, Ness County, KS - 2023

	Measure	Description	Factor Category	County Value	State Value	Impact on Rankings
1	Injury Deaths	Number of deaths due to injury per 100,000 population.	Social and Economic Environment	162	78	-
2	Preventable Hospital Stays	Rate of hospital stays for ambulatory-care sensitive conditions per 100,000 Medicare enrollees.	Clinical Care	1872	2708	+
3	Unemployment	Percentage of population ages 16 and older unemployed but seeking work.	Social and Economic Environment	2.2%	3.2%	+
4	Children in Poverty	Percentage of people under age 18 in poverty.	Social and Economic Environment	13%	14%	+
5	Mammography Screening	Percentage of female Medicare enrollees ages 65-74 that received an annual mammography screening.	Clinical Care	55%	42%	+

### Health Outcomes: Drivers with the greatest impact on ranking, Ness County, KS - 2023

	Measure	Description	Factor Category	County Value	State Value	Impact on Rankings
1	Low Birthweight	Percentage of live births with low birthweight (< 2,500 grams).	Quality of Life	6%	7.2%	+
2	Poor Mental Health Days	Average number of mentally unhealthy days reported in past 30 days (age-adjusted).	Quality of Life	4	4	+
3	Poor or Fair Health	Percentage of adults reporting fair or poor health (age-adjusted).	Quality of Life	13%	13%	+
4	Poor Physical Health Days	Average number of physically unhealthy days reported in past 30 days (age-adjusted).	Quality of Life	3	3	+
5	Premature Death	Years of potential life lost before age 75 per 100,000 population (age-adjusted).	Length of Life	NR	7458	NR

NR: Measure could not be reported for this county.

+ Green Plus: Measure with a positive impact on a county's ranking position.

- Red Minus: Measure with a negative impact on a county's ranking position.

Technical Note: The state values are only provided as a point of reference. They have not been used in the determination of county rankings or top drivers for health outcomes and health factors. Drivers are provided in order of impact on ranking for this year. For more information on the calculation of score and rankings, please visit: <https://bit.ly/2023CHRzScores>. For more information on measure source, ranking weight and year(s), please visit <https://bit.ly/CHInfo>.



KANSAS HEALTH INSTITUTE

Informing Policy. Improving Health.

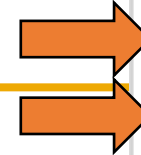
khi.org

25



# County Profile - Front

- Population Estimate
- Notes for Interpretation
- Health Factors & Outcomes Ranks & Sub-ranks



## Ness County

28

Health Factors Rank

35

Health Outcomes Rank

Population: 2,672



KANSAS HEALTH INSTITUTE  
Informing Policy. Improving Health.

County Health  
Rankings & Roadmaps  
Building a Culture of Health, County by County

A Robert Wood Johnson Foundation program  
khi.org | countyhealthrankings.org

20  
23

Empty cells: Shaded cells indicate measures were new additions (@), omitted due to methodology change (#), or are unavailable due to low reliability.

Δ: Source data have not been updated since the 2022 County Health Rankings Release.

N/A: State is not ranked against counties.

	2019	2020	2021	2022	2023	Kansas 2023
Number of Counties Ranked	102	104	104	104	104	104
<b>Health Outcomes- Rank</b>	<b>90</b>	<b>51</b>	<b>55</b>	<b>45</b>	<b>35</b>	<b>N/A</b>
Length of Life- Rank	98	38	39	44	44	N/A
Premature death (years of potential life lost, per 100,000) <sup>Δ</sup>	11065					7458
<b>Quality of Life- Rank</b>	<b>38</b>	<b>52</b>	<b>58</b>	<b>41</b>	<b>23</b>	<b>N/A</b>
% Reporting poor or fair health, adults <sup>#</sup>			18	18	13	13
Average number of poor physical health days, adults <sup>#</sup>			4	4	3	3
Average number of poor mental health days, adults <sup>#</sup>			4	4	4	4
% Low birthweight, <2,500 grams <sup>Δ</sup>	5.8	6.9	6.8	6	6	7.2
<b>Health Factors- Rank</b>	<b>27</b>	<b>22</b>	<b>35</b>	<b>32</b>	<b>28</b>	<b>N/A</b>
<b>Health Behaviors- Rank</b>	<b>40</b>	<b>26</b>	<b>46</b>	<b>41</b>	<b>49</b>	<b>N/A</b>
% Smokers, adults <sup>#</sup>			20	18	19	17
% Obese, adults age 20 and older <sup>#</sup>				37	37	36
Food environment index, 0 (worst) to 10 (best)	7.9	8	7.9	7.8	7.9	7
% Physically inactive, adults age 20 and older <sup>#</sup>				30	24	21
% Access to exercise opportunities <sup>#</sup>						80
% Excessive drinking, adults <sup>#</sup>			19	18	20	20
% Driving deaths with alcohol-involvement <sup>Δ</sup>	33	14	14	20	20	19
Sexually transmitted infection rate, per 100,000 population	200			182		502
Teen birth rate, per 1,000 females age 15-19 <sup>Δ</sup>	27	28	26	28	28	22
<b>Clinical Care- Rank</b>	<b>37</b>	<b>73</b>	<b>87</b>	<b>63</b>	<b>27</b>	<b>N/A</b>
% Uninsured, population under age 65	13	16	14	16	15	10
Primary care physicians rate, per 100,000 population	68	70	70	73	108	79
Dentists rate, per 100,000 population	0	0	0	0	0	62
Mental health providers rate, per 100,000 population						224
Preventable hospital stays rate, per 100,000 Medicare enrollees	3035	4467	5863	3460	1872	2708
% Mammography screening, Medicare females age 65-74	53	48	42	51	55	42
% Flu vaccinations, Medicare enrollees	33	33	37	38	40	51
<b>Social &amp; Economic Factors- Rank</b>	<b>30</b>	<b>20</b>	<b>26</b>	<b>32</b>	<b>37</b>	<b>N/A</b>
% High school completion, adults age 25 and older <sup>#</sup>			91	92	91	92
% With some college, adults age 25-44	63	64	68	72	71	71
% Unemployed, population age 16 and older	2.9	2.8	2.5	3.4	2.2	3.2
% Children in poverty	15	14	13	14	13	14
Income inequality ratio, 80th to 20th percentile	4.3	4	4.3	3.9	3.5	4.4
% Children in single-parent households <sup>#</sup>			13	16	14	21
Membership associations rate, per 10,000 population	30.4	31.4	31.7	29.1	28.9	13.2
Injury death rate, per 100,000 population <sup>Δ</sup>	140	129	153	162	162	78
<b>Physical Environment- Rank</b>	<b>10</b>	<b>13</b>	<b>10</b>	<b>9</b>	<b>7</b>	<b>N/A</b>
Average daily density of fine particulate matter	7.1	7.1	5.1	6.4	5.8	6.7
Drinking water violations?	No	No	No	No	No	
% Households with severe housing problems	7	8	9	8	7	13
% Driving alone to work	76	77	75	75	73	79
% Long commute - driving alone	15	16	16	19	16	22

This document was prepared by the staff at the Kansas Health Institute. If you would like more information about County Health Rankings & Roadmaps, please contact Wyatt Beckman at (785) 233-5443 or email at [wbeckman@khi.org](mailto:wbeckman@khi.org).



KANSAS HEALTH INSTITUTE  
Informing Policy. Improving Health.



# County Profile - Front

- Health Factors & Outcomes Ranks & Sub-ranks
- 5 Years of Ranked Measure Data
- Kansas Value

# 2023

Empty cells: Shaded cells indicate measures were new additions (@), omitted due to methodology change (#), or are unavailable due to low reliability.

Δ: Source data have not been updated since the 2022 County Health Rankings Release.

N/A: State is not ranked against counties.

	2019	2020	2021	2022	2023	Kansas 2023
Number of Counties Ranked	102	104	104	104	104	104
<b>Health Outcomes- Rank</b>	<b>90</b>	<b>51</b>	<b>55</b>	<b>45</b>	<b>35</b>	<b>N/A</b>
<b>Length of Life- Rank</b>	<b>98</b>	<b>38</b>	<b>39</b>	<b>44</b>	<b>44</b>	<b>N/A</b>
Premature death (years of potential life lost, per 100,000) <sup>Δ</sup>	11065					7458
<b>Quality of Life- Rank</b>	<b>38</b>	<b>52</b>	<b>58</b>	<b>41</b>	<b>23</b>	<b>N/A</b>
% Reporting poor or fair health, adults <sup>#</sup>			18	18	13	13
Average number of poor physical health days, adults <sup>#</sup>			4	4	3	3
Average number of poor mental health days, adults <sup>#</sup>			4	4	4	4
% Low birthweight, <2,500 grams <sup>Δ</sup>	5.8	6.9	6.8	6	6	7.2
<b>Health Factors- Rank</b>	<b>27</b>	<b>22</b>	<b>35</b>	<b>32</b>	<b>28</b>	<b>N/A</b>
<b>Health Behaviors- Rank</b>	<b>40</b>	<b>26</b>	<b>46</b>	<b>41</b>	<b>49</b>	<b>N/A</b>
% Smokers, adults <sup>#</sup>			20	18	19	17
% Obese, adults age 20 and older <sup>#</sup>				37	37	36
Food environment index, 0 (worst) to 10 (best)	7.9	8	7.9	7.8	7.9	7
% Physically inactive, adults age 20 and older <sup>#</sup>				30	24	21
% Access to exercise opportunities <sup>#</sup>						80
% Excessive drinking, adults <sup>#</sup>			19	18	20	20
% Driving deaths with alcohol-involvement <sup>Δ</sup>	33	14	14	20	20	19
Sexually transmitted infection rate, per 100,000 population	200			182		502
Teen birth rate, per 1,000 females age 15-19 <sup>Δ</sup>	27	28	26	28	28	22
<b>Clinical Care- Rank</b>	<b>37</b>	<b>73</b>	<b>87</b>	<b>63</b>	<b>27</b>	<b>N/A</b>
% Uninsured, population under age 65	13	16	14	16	15	10
Primary care physicians rate, per 100,000 population	68	70	70	73	108	79
Dentists rate, per 100,000 population	0	0	0	0	0	62
Mental health providers rate, per 100,000 population						224
Preventable hospital stays rate, per 100,000 Medicare enrollees	3035	4467	5863	3460	1872	2708
% Mammography screening, Medicare females age 65-74	53	48	42	51	55	42
% Flu vaccinations, Medicare enrollees	33	33	37	38	40	51
<b>Social &amp; Economic Factors- Rank</b>	<b>30</b>	<b>20</b>	<b>26</b>	<b>32</b>	<b>37</b>	<b>N/A</b>
% High school completion, adults age 25 and older <sup>#</sup>			91	92	91	92
% With some college, adults age 25-44	63	64	68	72	71	71
% Unemployed, population age 16 and older	2.9	2.8	2.5	3.4	2.2	3.2
% Children in poverty	15	14	13	14	13	14
Income inequality ratio, 80th to 20th percentile	4.3	4	4.3	3.9	3.5	4.4
% Children in single-parent households <sup>#</sup>			13	16	14	21
Membership associations rate, per 10,000 population	30.4	31.4	31.7	29.1	28.9	13.2
Injury death rate, per 100,000 population <sup>Δ</sup>	140	129	153	162	162	78
<b>Physical Environment- Rank</b>	<b>10</b>	<b>13</b>	<b>10</b>	<b>9</b>	<b>7</b>	<b>N/A</b>
Average daily density of fine particulate matter	7.1	7.1	5.1	6.4	5.8	6.7
Drinking water violations?	No	No	No	No	No	
% Households with severe housing problems	7	8	9	8	7	13
% Driving alone to work	76	77	75	75	73	79
% Long commute - driving alone	15	16	16	19	16	22



# County Profile - Notes

**Empty cells:** Shaded cells indicate measures were new additions (@), omitted due to methodology change (#), or are unavailable due to low reliability.

**Δ:** Source data have not been updated since the 2022 County Health Rankings Release.

**N/A:** State is not ranked against counties.

# 2023

**Empty cells:** Shaded cells indicate measures were new additions (@), omitted due to methodology change (#), or are unavailable due to low reliability.

**Δ:** Source data have not been updated since the 2022 County Health Rankings Release.

**N/A:** State is not ranked against counties.

	2019	2020	2021	2022	2023	Kansas 2023
Number of Counties Ranked	102	104	104	104	104	104
<b>Health Outcomes- Rank</b>	<b>90</b>	<b>51</b>	<b>55</b>	<b>45</b>	<b>35</b>	<b>N/A</b>
<b>Length of Life- Rank</b>	<b>98</b>	<b>38</b>	<b>39</b>	<b>44</b>	<b>44</b>	<b>N/A</b>
Premature death (years of potential life lost, per 100,000) <sup>Δ</sup>	11065					7458
<b>Quality of Life- Rank</b>	<b>38</b>	<b>52</b>	<b>58</b>	<b>41</b>	<b>23</b>	<b>N/A</b>
% Reporting poor or fair health, adults <sup>#</sup>			18	18	13	13
Average number of poor physical health days, adults <sup>#</sup>			4	4	3	3
Average number of poor mental health days, adults <sup>#</sup>			4	4	4	4
% Low birthweight, <2,500 grams <sup>#</sup>	5.8	6.9	6.8	6	6	7.2
<b>Health Factors- Rank</b>	<b>27</b>	<b>22</b>	<b>35</b>	<b>32</b>	<b>28</b>	<b>N/A</b>
<b>Health Behaviors- Rank</b>	<b>40</b>	<b>26</b>	<b>46</b>	<b>41</b>	<b>49</b>	<b>N/A</b>
% Smokers, adults <sup>#</sup>			20	18	19	17
% Obese, adults age 20 and older <sup>#</sup>				37	37	36
Food environment index: 0 (worst) to 10 (best)	7.9	8	7.9	7.8	7.9	7
% Physically inactive, adults age 20 and older <sup>#</sup>				30	24	21
% Access to exercise opportunities <sup>#</sup>						80
% Excessive drinking, adults <sup>#</sup>			19	18	20	20
% Driving deaths with alcohol-involvement <sup>Δ</sup>	33	14	14	20	20	19
Sexually transmitted infection rate, per 100,000 population	200			182		502
Teen birth rate, per 1,000 females age 15-19 <sup>Δ</sup>	27	28	26	28	28	22
<b>Clinical Care- Rank</b>	<b>37</b>	<b>73</b>	<b>87</b>	<b>63</b>	<b>27</b>	<b>N/A</b>
% Uninsured, population under age 65	13	16	14	16	15	10
Primary care physicians rate, per 100,000 population	68	70	70	73	108	79
Dentists rate, per 100,000 population	0	0	0	0	0	62
Mental health providers rate, per 100,000 population						224
Preventable hospital stays rate, per 100,000 Medicare enrollees	3035	4467	5863	3460	1872	2708
% Mammography screening, Medicare females age 65-74	53	48	42	51	55	42
% Flu vaccinations, Medicare enrollees	33	33	37	38	40	51
<b>Social &amp; Economic Factors- Rank</b>	<b>30</b>	<b>20</b>	<b>26</b>	<b>32</b>	<b>37</b>	<b>N/A</b>
% High school completion, adults age 25 and older <sup>@</sup>			91	92	91	92
% With some college, adults age 25-44	63	64	68	72	71	71
% Unemployed, population age 16 and older	2.9	2.8	2.5	3.4	2.2	3.2
% Children in poverty	15	14	13	14	13	14
Income inequality ratio, 80th to 20th percentile	4.3	4	4.3	3.9	3.5	4.4
% Children in single-parent households <sup>#</sup>			13	16	14	21
Membership associations rate, per 10,000 population	30.4	31.4	31.7	29.1	28.9	13.2
Injury death rate, per 100,000 population <sup>#</sup>	140	129	153	162	162	78
<b>Physical Environment- Rank</b>	<b>10</b>	<b>13</b>	<b>10</b>	<b>9</b>	<b>7</b>	<b>N/A</b>
Average daily density of fine particulate matter	7.1	7.1	5.1	6.4	5.8	6.7
Drinking water violations?	No	No	No	No	No	
% Households with severe housing problems	7	8	9	8	7	13
% Driving alone to work	76	77	75	75	73	79
% Long commute - driving alone	15	16	16	19	16	22



# County Profile - Back

- Description of Drivers
- Health Factors Drivers
- Health Outcomes Drivers
- Technical Note
- QR Code to *What Works for Health*

## Ness County

28  
Health Factors Rank

35  
Health Outcomes Rank

The annual *County Health Rankings* provide a snapshot of the health of Kansas counties. The *Rankings* are made up of two summary scores: **Health Factors** (which measure issues that can shape the health outcomes) and **Health Outcomes** (which measure length and quality of life). The following tables illustrate the “drivers,” or measures with the greatest impact on ranking position, for this county.

### What do these drivers mean?

The drivers indicate the measures with the greatest impact on the ranking position. Drivers labeled with a green plus sign are measures on which the county performed particularly well. Drivers labeled with a red minus sign indicate priority areas which, if improved, could have the greatest impact on improving the rankings of the county.

Health Factors: Drivers with greatest impact on ranking, Ness County, KS - 2023

	Measure	Description	Factor Category	County Value	State Value	Impact on Rankings
1	Injury Deaths	Number of deaths due to injury per 100,000 population.	Social and Economic Environment	162	78	-
2	Preventable Hospital Stays	Rate of hospital stays for ambulatory-care sensitive conditions per 100,000 Medicare enrollees.	Clinical Care	1872	2708	+
3	Unemployment	Percentage of population ages 16 and older unemployed but seeking work.	Social and Economic Environment	2.2%	3.2%	+
4	Children in Poverty	Percentage of people under age 18 in poverty.	Social and Economic Environment	13%	14%	+
5	Mammography Screening	Percentage of female Medicare enrollees ages 65-74 that received an annual mammography screening.	Clinical Care	55%	42%	+

Health Outcomes: Drivers with the greatest impact on ranking, Ness County, KS - 2023

	Measure	Description	Factor Category	County Value	State Value	Impact on Rankings
1	Low Birthweight	Percentage of live births with low birthweight (< 2,500 grams).	Quality of Life	6%	7.2%	+
2	Poor Mental Health Days	Average number of mentally unhealthy days reported in past 30 days (age-adjusted).	Quality of Life	4	4	+
3	Poor or Fair Health	Percentage of adults reporting fair or poor health (age-adjusted).	Quality of Life	13%	13%	+
4	Poor Physical Health Days	Average number of physically unhealthy days reported in past 30 days (age-adjusted).	Quality of Life	3	3	+
5	Premature Death	Years of potential life lost before age 75 per 100,000 population (age-adjusted).	Length of Life	NR	7458	NR

NR: Measure could not be reported for this county.

+ **Green Plus:** Measure with a positive impact on a county's ranking position.

- **Red Minus:** Measure with a negative impact on a county's ranking position.

**Technical Note:** The state values are only provided as a point of reference. They have not been used in the determination of county rankings or top drivers for health outcomes and health factors. Drivers are provided in order of impact on ranking for this year. For more information on the calculation of score and rankings, please visit: <https://bit.ly/2023CHRScores>. For more information on measure source, ranking weight and year(s), please visit <https://bit.ly/CHRInfo>.



# County Profile - Back

## Each Driver

- Measure
- Description
- Factor Category
- County Value
- State Value
- Impact on Rankings

Health Factors: Drivers with greatest impact on ranking, Ness County, KS - 2023

	Measure	Description	Factor Category	County Value	State Value	Impact on Rankings
1	Injury Deaths	Number of deaths due to injury per 100,000 population.	Social and Economic Environment	162	78	-
2	Preventable Hospital Stays	Rate of hospital stays for ambulatory-care sensitive conditions per 100,000 Medicare enrollees.	Clinical Care	1872	2708	+
3	Unemployment	Percentage of population ages 16 and older unemployed but seeking work.	Social and Economic Environment	2.2%	3.2%	+
4	Children in Poverty	Percentage of people under age 18 in poverty.	Social and Economic Environment	13%	14%	+
5	Mammography Screening	Percentage of female Medicare enrollees ages 65-74 that received an annual mammography screening.	Clinical Care	55%	42%	+

Health Outcomes: Drivers with the greatest impact on ranking, Ness County, KS - 2023

	Measure	Description	Factor Category	County Value	State Value	Impact on Rankings
1	Low Birthweight	Percentage of live births with low birthweight (< 2,500 grams).	Quality of Life	6%	7.2%	+
2	Poor Mental Health Days	Average number of mentally unhealthy days reported in past 30 days (age-adjusted).	Quality of Life	4	4	+
3	Poor or Fair Health	Percentage of adults reporting fair or poor health (age-adjusted).	Quality of Life	13%	13%	+
4	Poor Physical Health Days	Average number of physically unhealthy days reported in past 30 days (age-adjusted).	Quality of Life	3	3	+
5	Premature Death	Years of potential life lost before age 75 per 100,000 population (age-adjusted).	Length of Life	NR	7458	NR



# New for 2023



KANSAS HEALTH INSTITUTE

*Informing Policy. Improving Health.*



# Updated Website Features

## Redesigned for 2023

### County Snapshots

- Easier to find data, notes and methodology
- Improved compare county functionality
- New county background and demographics

### State Snapshot

- No static PDF report
- State snapshot in browser

COUNTY

Ness, KS

2023

Rank #35 of 104 ranked counties in [Kansas](#)

[Download Kansas data sets](#)

#### Health Outcomes

Health outcomes represent how healthy a county is right now, in terms of length of life but quality of life as well.

Ness (NS) is ranked in the higher middle range of counties in Kansas (Higher 50%-75%).



#### Health Factors

Health Factors represent those things we can modify to improve the length and quality of life for residents.

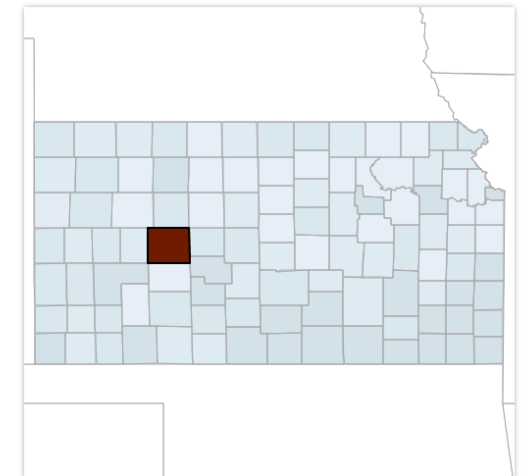
Ness (NS) is ranked in the higher middle range of counties in Kansas (Higher 50%-75%).



Search by county, state or ZIP code

Search

Go



KANSAS HEALTH INSTITUTE

Informing Policy. Improving Health.

khi.org

32



# New Measures

---

## Additional measures not included in ranking

**Voter Turnout:** Percentage of citizen population age 18 or older who voted in the 2020 U.S. presidential election.

**Census Participation:** Percentage of all households that self-responded to the 2020 census by internet, paper questionnaire or telephone.



# What Works for Health

## New and Updated Strategies

### New Strategies

- Voter registration initiatives
- Voter turnout initiatives
- Participatory budgeting
- Youth civics education

### Page Design Update

#### Evidence Rating <sup>1</sup>

Scientifically Supported



Strategies with this rating are most likely to make a difference. These strategies have been tested in many robust studies with consistently positive results.

#### Health Factors <sup>1</sup>

 [Access to Care](#)

#### Decision Makers

[Health Care](#)

[Government](#)

[Public Health](#)

[Community Development](#)

### Federally qualified health centers (FQHCs)

 [Print this strategy](#)

 [Save this strategy](#)

Federally qualified health centers (FQHCs) are public and private non-profit health care organizations that receive federal funding under Section 330 of the Public Health Service Act. Governed by a community board, FQHCs deliver comprehensive care to uninsured, underinsured, and vulnerable patients regardless of ability to pay. FQHCs are located in high need communities in urban and rural areas<sup>4</sup>. Often called Community Health Centers (CHCs), FQHCs can also include migrant health centers, health care for the homeless centers, public housing primary care centers, and outpatient health programs or facilities operated by a tribe or tribal organization<sup>2</sup>.

#### What could this strategy improve?

##### Expected Benefits

*Our evidence rating is based on the likelihood of achieving these outcomes:*

- Increased access to health care

##### Potential Benefits

*Our evidence rating is not based on these outcomes, but these benefits may also be possible:*

- Increased continuity of care



# Podcast & National Findings Report

## 2023 Focus on Civic Health



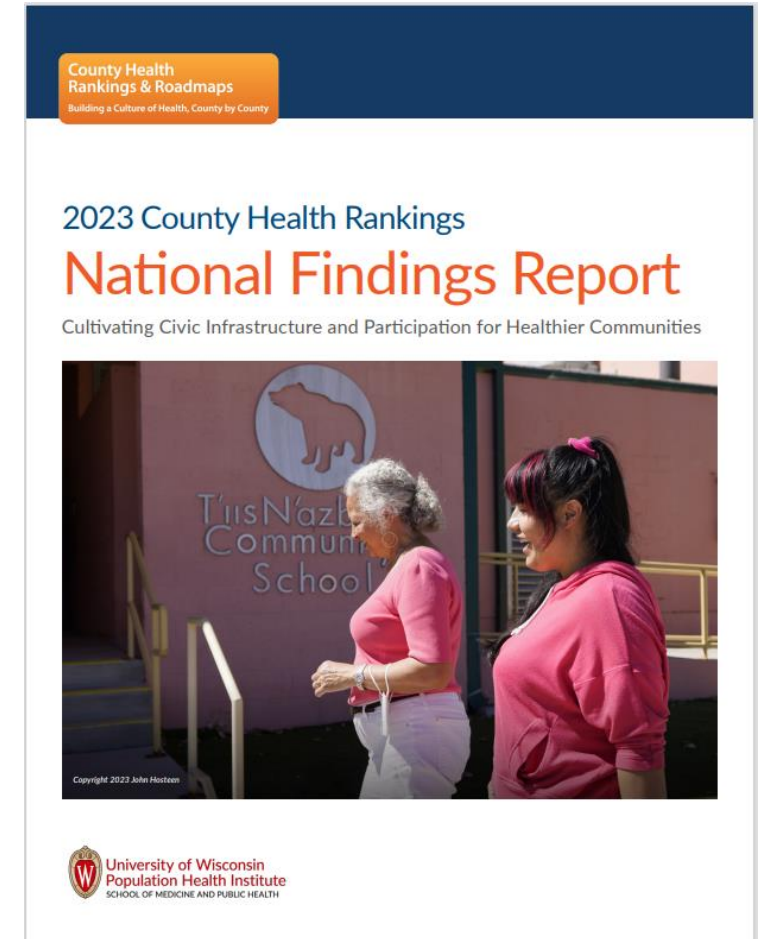
March 22, 2023

### Introducing: Civic Health

In Solidarity is back for a brand-new series exploring the connections between our civic health, our individual health and the health of our communities. We're bringing you nine interviews with equity experts and authors Daniel Dawes, Dr. Peniel Joseph, Dr. Marjory Givens, Dr. Ericka Blacksher, Dr. Julia Kaufman, Solange Gould, Aliya Bhatia, Jeanne Ayers and Dawn Hunter.

Additional episodes coming soon.

Series: [Civic Health](#)



KANSAS HEALTH INSTITUTE

Informing Policy. Improving Health.

# Website Demonstration

*[www.countyhealthrankings.org](http://www.countyhealthrankings.org)*



KANSAS HEALTH INSTITUTE

*Informing Policy. Improving Health.*

---

# THANK YOU!

## Any Questions?



KANSAS HEALTH INSTITUTE

*Informing Policy. Improving Health.*



KANSAS HEALTH INSTITUTE

*Informing Policy. Improving Health.*

[khi.org](http://khi.org)

---

# Reach out to me!

Email: [wbeckman@khi.org](mailto:wbeckman@khi.org)

Phone: (785) 233-5443





# Connect With Us

---



KANSAS HEALTH INSTITUTE

*Informing Policy. Improving Health.*

[www.khi.org](http://www.khi.org)

@KHIorg



212 SW 8<sup>th</sup> Avenue | Topeka, KS | 785.233.5443