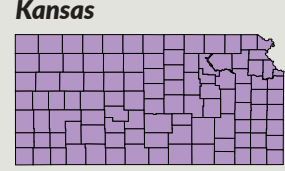
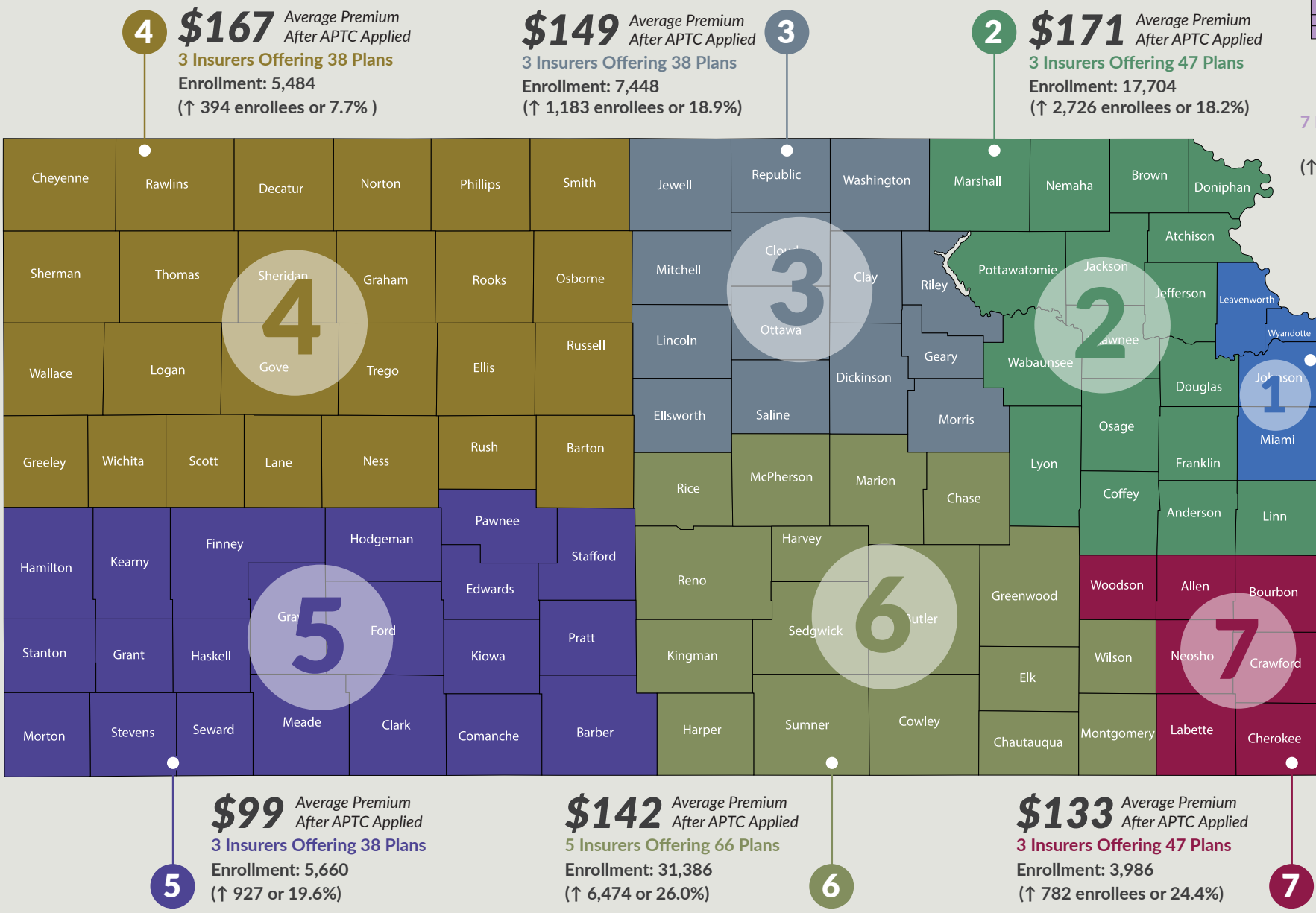


Figure 6. Kansas Marketplace Enrollment Growth and Average Premium After APTC by Rating Area, 2022 Plan Year



\$149
Average Premium After APTC Applied
7 Insurers Offering 123 Plans
Enrollment: 107,784
(↑ 19,157 enrollees or 21.6%)



Note: The number enrolled is the number of people selecting a plan during the marketplace open enrollment period. Increase in enrollment shown is as compared to 2021 Plan Year. The premium shown for Kansans after Advance Premium Tax Credits (APTC) is the average monthly premium charged after applying APTC. Statewide, 90.3 percent of enrollees received APTC. In 2022, APTC is available to all eligible enrollees with income above 100 percent of the Federal Poverty Level (FPL), but enrollees with high income may receive minimal or \$0 in APTC.

Source: Kansas Health Institute analysis of U.S. Department of Health and Human Services 2022 Open Enrollment Period County-Level Public Use File.

2021 FPL	Family Size 1	Family Size 2	Family Size 4
100%	\$12,880	\$17,420	\$26,500
250%	\$32,200	\$43,550	\$66,250
400%	\$51,520	\$69,680	\$106,000