



INSURANCE COVERAGE BY KANSAS CONGRESSIONAL DISTRICT

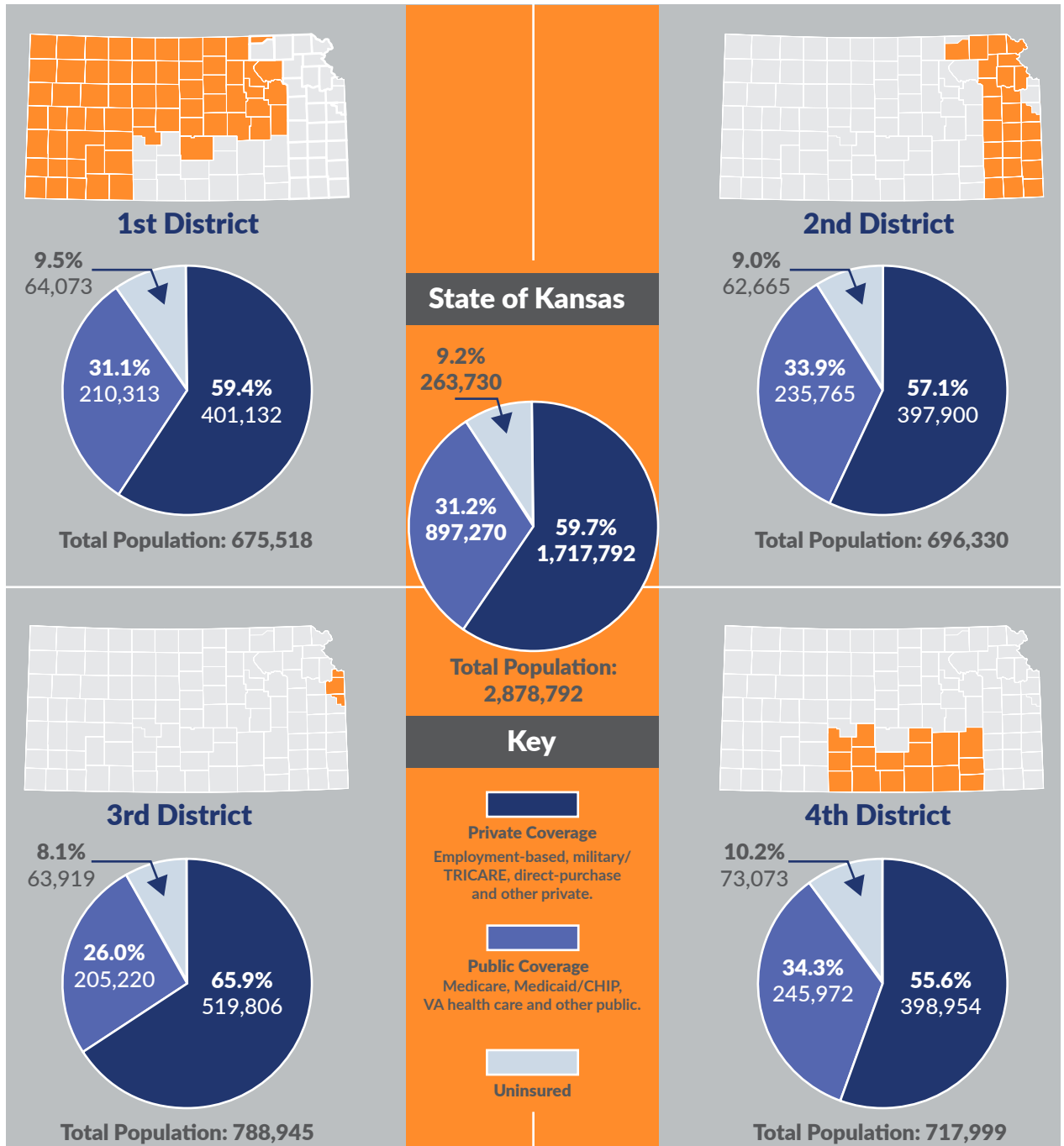
Using data from the U.S. Census Bureau, this fact sheet details health insurance coverage for Kansans in 2021 by congressional district (Figure 1) as well as by age group (Figure 2, page 2).

Figure 1. Health Insurance Coverage by Congressional District, 2021

FACT SHEET

OCTOBER

2022



Note: Civilian non-institutionalized Kansas residents = 2,878,792. Estimates are for residents within the congressional district boundaries of the 117th Congress which are in effect from January 3, 2021-January 3, 2023. Percentages may not sum to 100 percent due to rounding. Margins of error for combined population subgroups are not available, so statistical tests for significant differences cannot be conducted. Because American Community Survey (ACS) respondents can report more than one type of insurance, the Kansas Health Institute utilizes a standard hierarchy of public, private and then uninsured.

Source: Kansas Health Institute analysis of data from the U.S. Census Bureau 2021 1-year American Community Survey table B27010, available at <https://bit.ly/3RYVCzv>

Figure 2. Health Insurance Coverage by Age and Congressional District, 2021

2021	Total Population	Private Coverage		Public Coverage		Uninsured	
		Number	Percentage	Number	Percentage	Number	Percentage
Kansas Overall	2,878,792	1,717,792	59.7%	897,270	31.2%	263,730	9.2%
Children, Age 0-18	745,739	464,443	62.3%	243,731	32.7%	37,565	5.0%
Adults, Age 19-64	1,659,729	1,239,425	74.7%	196,046	11.8%	224,258	13.5%
Adults, Age 65+	473,324	13,924	2.9%	457,493	96.7%	1,907	0.4%
1st District	675,518	401,132	59.4%	210,313	31.1%	64,073	9.5%
Children, Age 0-18	178,981	112,760	63.0%	56,242	31.4%	9,979	5.6%
Adults, Age 19-64	383,880	286,321	74.6%	43,694	11.4%	53,865	14.0%
Adults, Age 65+	112,657	2,051	1.8%	110,377	98.0%	229	0.2%
2nd District	696,330	397,900	57.1%	235,765	33.9%	62,665	9.0%
Children, Age 0-18	169,915	106,709	62.8%	53,761	31.6%	9,445	5.6%
Adults, Age 19-64	400,371	288,050	71.9%	59,533	14.9%	52,788	13.2%
Adults, Age 65+	126,044	3,141	2.5%	122,471	97.2%	432	0.3%
3rd District	788,945	519,806	65.9%	205,220	26.0%	63,919	8.1%
Children, Age 0-18	204,820	141,831	69.2%	55,066	26.9%	7,923	3.9%
Adults, Age 19-64	467,641	372,766	79.7%	39,698	8.5%	55,177	11.8%
Adults, Age 65+	116,484	5,209	4.5%	110,456	94.8%	819	0.7%
4th District	717,999	398,954	55.6%	245,972	34.3%	73,073	10.2%
Children, Age 0-18	192,023	103,143	53.7%	78,662	41.0%	10,218	5.3%
Adults, Age 19-64	407,837	292,288	71.7%	53,121	13.0%	62,428	15.3%
Adults, Age 65+	118,139	3,523	3.0%	114,189	96.7%	427	0.4%

Note: Civilian non-institutionalized Kansas residents = 2,878,792. Estimates are for residents within the congressional district boundaries of the 117th Congress which are in effect from January 3, 2021-January 3, 2023. Percentages may not sum to 100 percent due to rounding. Margins of error for combined population subgroups are not available, so statistical tests for significant differences cannot be conducted. Since ACS respondents can report more than one type of insurance, the Kansas Health Institute utilizes a standard hierarchy of public, private and then uninsured.

Source: Kansas Health Institute analysis of data from the U.S. Census Bureau 2021 1-year American Community Survey table B27010, available at <https://bit.ly/3RYVCzv>



Additional information related to this Fact Sheet, including Key Points and Interactive Maps, can be found online at khi.org/articles/2022-insurance-coverage-by-kansas-congressional-district

ABOUT THE ISSUE BRIEF

This fact sheet is based on work done by Cynthia Snyder, M.A., Angela Wu, M.S., Phillip Steiner, M.A. It is available online at khi.org/articles/2022-insurance-coverage-by-kansas-congressional-district

KANSAS HEALTH INSTITUTE

The Kansas Health Institute supports effective policymaking through nonpartisan research, education and engagement. KHI believes evidence-based information, objective analysis and civil dialogue enable policy leaders to be champions for a healthier Kansas. Established in 1995 with a multiyear grant from the Kansas Health Foundation, KHI is a nonprofit, nonpartisan educational organization based in Topeka.

Copyright© Kansas Health Institute 2022. Materials may be reprinted with written permission. Reference publication number KHI/22-31.

212 SW 8th Avenue | Suite 300
Topeka, Kansas | 66603-3936

785.233.5443

khi.org

/KHIorg

@KHIorg

KHIorg