



County Health Rankings & Roadmaps

A Healthier Nation, County by County

2012 *Rankings* **Kansas**



Robert Wood Johnson Foundation



UNIVERSITY OF WISCONSIN

Population Health Institute

Translating Research into Policy and Practice

Introduction

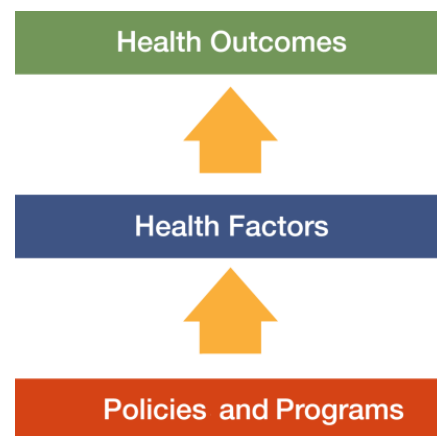
Where we live matters to our health. The health of a community depends on many different factors, including the environment, education and jobs, access to and quality of healthcare, and individual behaviors. We can improve a community's health by implementing effective policies and programs. For example, people who live in communities with smoke-free laws are less likely to smoke or to be exposed to second-hand smoke, which reduces lung cancer risk. In addition, people who live in communities with safe and accessible park and recreation space are more likely to exercise, which reduces heart disease risk.

However, health varies greatly across communities, with some places being much healthier than others. And, until now, there has been no standard method to illustrate what we know about what makes people sick or healthy or a central resource to identify what we can do to create healthier places to live, learn, work and play.

We know that much of what influences our health happens outside of the doctor's office – in our schools, workplaces and neighborhoods. The *County Health Rankings & Roadmaps* program provides information on the overall health of your community and provides the tools necessary to create community-based, evidence-informed solutions. Ranking the health of nearly every county across the nation, the *County Health Rankings* illustrate **what we know** when it comes to what is making communities sick or healthy. The *County Health Roadmaps* show **what we can do** to create healthier places to live, learn, work and play. The Robert Wood Johnson Foundation collaborates with the University of Wisconsin

Population Health Institute to bring this groundbreaking program to counties and states across the nation.

The *County Health Rankings & Roadmaps* program includes the *County Health Rankings* project, launched in 2010, and the newer *Roadmaps* project that mobilizes local communities, national partners and leaders across all sectors to improve health. The program is based on this model of population health improvement:



In this model, health outcomes are measures that describe the current health status of a county. These health outcomes are influenced by a set of health factors. Counties can improve health outcomes by addressing all health factors with effective, evidence-informed policies and programs.

Everyone has a stake in community health. We all need to work together to find solutions. The *County Health Rankings & Roadmaps* serve as both a call to action and a needed tool in this effort.

Guide to Our Web Site

To compile the *Rankings*, we selected measures that reflect important aspects of population health that can be improved and are available at the county level across the nation. Visit www.countyhealthrankings.org to learn more.

To get started and see data, enter your county or state name in the search box. Click on the name of a county or measure to see more details. You can: Compare Counties; Download data for your state; Print one or more county

snapshots; or Share information with others via Facebook, Twitter, or Google+. To understand our methods, click on Learn about the Data and Methods. To learn about steps that you can take to improve health in your community, click on the *Roadmaps* tab. The *Roadmaps to Health Action Center* provides tools and resources to help groups working together to create healthier places. The Opportunities section provides information on funding, recognition, and partnership opportunities. The Connections section helps you learn what others are doing.

County Health Roadmaps

The *Rankings* illustrate **what we know** when it comes to making people sick or healthy. The *County Health Rankings* confirm the critical role that factors such as education, jobs, income and the environment play in how healthy people are and how long we live.

This report introduces the *County Health Roadmaps*, a new partnership that mobilizes local communities, national partners and leaders across all sectors to improve health. The *County Health Roadmaps* show **what we can do** to create healthier places to live, learn, work and play. The Robert Wood Johnson Foundation collaborates with the University of Wisconsin Population Health Institute to bring this groundbreaking project to cities, counties and states across the nation.

The *Roadmaps* project includes grants to local coalitions and partnerships among policymakers, business, education, public health, health care, and community organizations; grants to national organizations working to improve health; recognition of communities whose promising efforts have led to better health; and customized technical assistance on strategies to improve health.

Roadmaps to Health Community Grants

The *Roadmaps to Health* Community Grants provide funding for 2 years to state and local efforts among policymakers, business, education, healthcare, public health and community organizations working to create positive policy or systems changes that address the social and economic factors that influence the health of people in their community.

Roadmaps to Health Partner Grants

The Robert Wood Johnson Foundation is awarding *Roadmaps to Health* Partner Grants to national organizations that are experienced at engaging local partners and leaders and are able to deliver high-quality training and technical assistance, and committed to making communities healthier places to live, learn, work and play. Partner grantees increase awareness about the *County Health Rankings & Roadmaps* to their members, affiliates and allies. The first Partner Grant was awarded to United Way Worldwide (UWW) in July 2011.

Roadmaps to Health Prize

The Robert Wood Johnson Foundation and the University of Wisconsin Population Health Institute will award *Roadmaps to Health* Prizes of \$25,000 to up to six communities that are working to become healthier places to live, learn, work and play. The *Roadmaps to Health* Prize is intended not only to honor successful efforts, but also to inspire and stimulate similar activities in other U.S. communities.



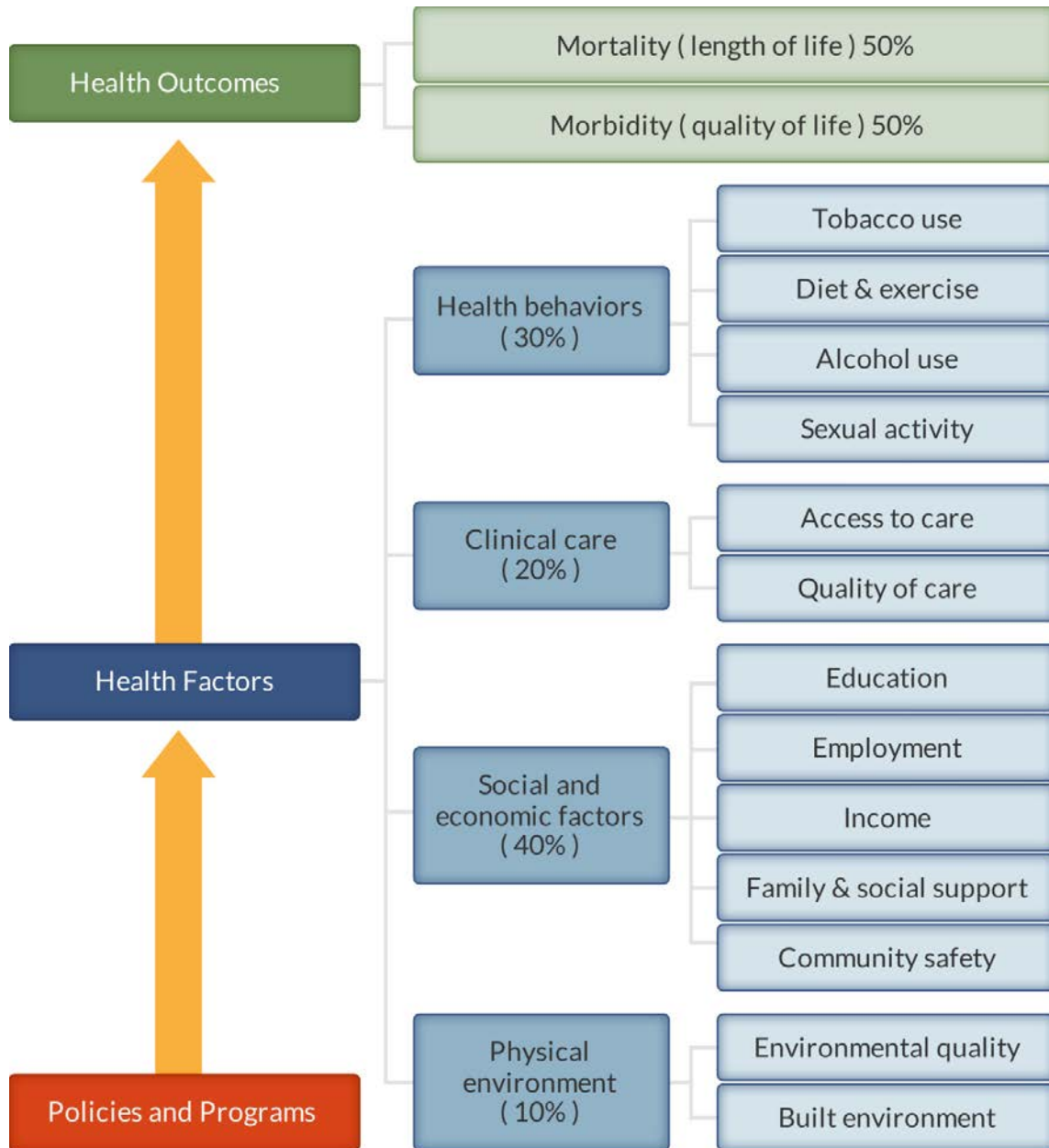
Roadmaps to Health Action Center

The *Roadmaps to Health* Action Center, based at the University of Wisconsin Population Health Institute, provides tools and resources to help groups working to make their communities healthier places. The new Action Center will provide guidance on developing strategies and advocacy efforts to advance pro-health policies, offer opportunities for ongoing learning, and in the summer of 2012, host a searchable database of evidence-informed policies and programs focused on health improvement. Experts provide customized consultation to local communities who have demonstrated the willingness and capacity to address factors that we know influence how healthy a person is, such as education, income and family connectedness.

County Health Rankings

The 2012 *County Health Rankings* report ranks Kansas counties according to their summary measures of **health outcomes** and **health factors**. Counties also receive a rank for mortality, morbidity, health behaviors, clinical care, social and economic factors, and the physical environment. The figure below depicts the structure of the *Rankings* model; those having high ranks (e.g., 1 or 2) are estimated to be the “healthiest.”

Our summary **health outcomes** rankings are based on an equal weighting of mortality and morbidity measures. The summary **health factors** rankings are based on weighted scores of four types of factors: behavioral, clinical, social and economic, and environmental. The weights for the factors (shown in parentheses in the figure) are based upon a review of the literature and expert input, but represent just one way of combining these factors.

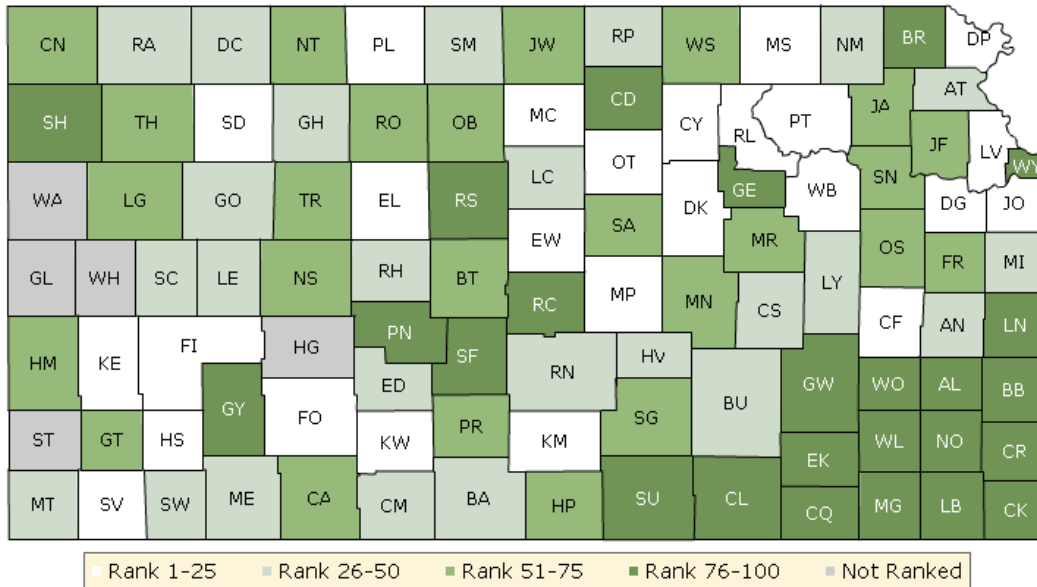


County Health Rankings model ©2012 UWPHI

The maps on this page and the next display Kansas's counties divided into groups by health rank. Maps help locate the healthiest and least healthy counties in the state. The lighter colors indicate better

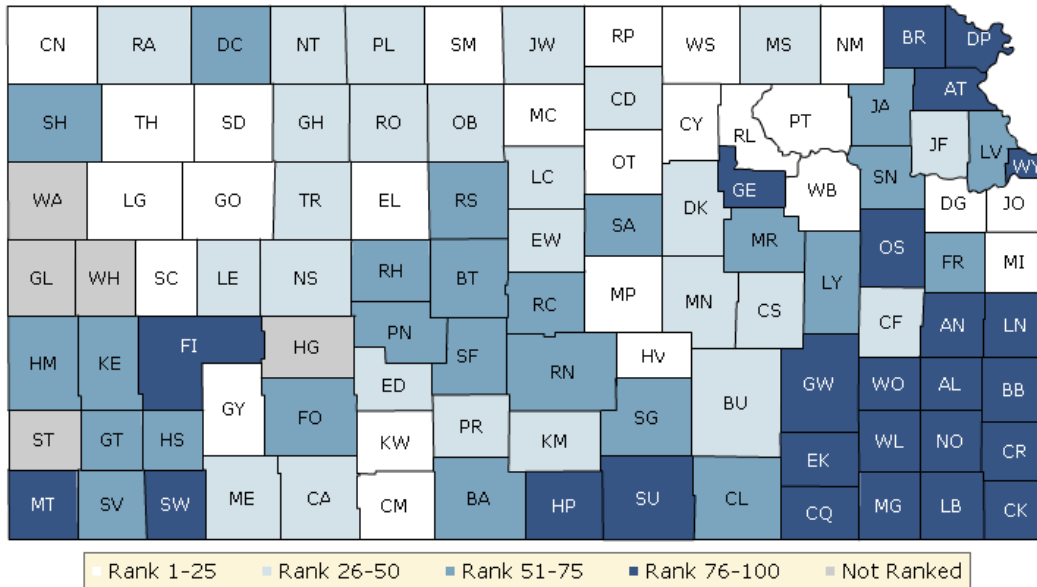
performance in the respective summary rankings. The green map shows the distribution of summary health outcomes. The blue displays the distribution of the summary rank for health factors.

HEALTH OUTCOMES



County	Rank	County	Rank	County	Rank	County	Rank
Allen	93	Finney	20	Logan	61	Rooks	74
Anderson	43	Ford	24	Lyon	27	Rush	41
Atchison	46	Franklin	53	Marion	52	Russell	79
Barber	28	Geary	90	Marshall	16	Saline	75
Barton	64	Gove	44	McPherson	11	Scott	31
Bourbon	92	Graham	35	Meade	34	Sedgwick	72
Brown	89	Grant	71	Miami	26	Seward	39
Butler	37	Gray	76	Mitchell	23	Shawnee	65
Chase	30	Greeley	NR	Montgomery	99	Sheridan	10
Chautauqua	98	Greenwood	94	Morris	73	Sherman	84
Cherokee	96	Hamilton	68	Morton	47	Smith	32
Cheyenne	54	Harper	63	Nemaha	33	Stafford	77
Clark	66	Harvey	29	Neosho	83	Stanton	NR
Clay	25	Haskell	14	Ness	60	Stevens	13
Cloud	86	Hodgeman	NR	Norton	56	Sumner	81
Coffey	5	Jackson	62	Osage	57	Thomas	58
Comanche	49	Jefferson	51	Osborne	55	Trego	69
Cowley	82	Jewell	59	Ottawa	8	Wabaunsee	21
Crawford	88	Johnson	2	Pawnee	80	Wallace	NR
Decatur	42	Kearny	12	Phillips	17	Washington	67
Dickinson	18	Kingman	9	Pottawatomie	6	Wichita	NR
Doniphan	3	Kiowa	15	Pratt	70	Wilson	87
Douglas	7	Labette	91	Rawlins	40	Woodson	100
Edwards	50	Lane	45	Reno	38	Wyandotte	97
Elk	95	Leavenworth	22	Republic	48		
Ellis	4	Lincoln	36	Rice	78		
Ellsworth	19	Linn	85	Riley	1		

HEALTH FACTORS



County	Rank	County	Rank	County	Rank	County	Rank
Allen	83	Finney	93	Logan	25	Rooks	50
Anderson	76	Ford	73	Lyon	60	Rush	53
Atchison	92	Franklin	69	Marion	26	Russell	64
Barber	59	Geary	90	Marshall	45	Saline	71
Barton	63	Gove	14	McPherson	3	Scott	8
Bourbon	84	Graham	33	Meade	41	Sedgwick	72
Brown	95	Grant	65	Miami	22	Seward	94
Butler	31	Gray	20	Mitchell	10	Shawnee	75
Chase	39	Greeley	NR	Montgomery	98	Sheridan	12
Chautauqua	86	Greenwood	82	Morris	51	Sherman	61
Cherokee	96	Hamilton	52	Morton	78	Smith	7
Cheyenne	18	Harper	80	Nemaha	2	Stafford	66
Clark	35	Harvey	9	Neosho	88	Stanton	NR
Clay	15	Haskell	55	Ness	28	Stevens	74
Cloud	40	Hodgeman	NR	Norton	47	Sumner	77
Coffey	48	Jackson	57	Osage	81	Thomas	19
Comanche	4	Jefferson	43	Osborne	36	Trego	38
Cowley	70	Jewell	27	Ottawa	6	Wabaunsee	17
Crawford	85	Johnson	1	Pawnee	68	Wallace	NR
Decatur	67	Kearny	54	Phillips	34	Washington	23
Dickinson	46	Kingman	32	Pottawatomie	16	Wichita	NR
Doniphan	79	Kiowa	21	Pratt	29	Wilson	99
Douglas	13	Labette	89	Rawlins	30	Woodson	91
Edwards	42	Lane	49	Reno	58	Wyandotte	100
Elk	87	Leavenworth	56	Republic	24		
Ellis	11	Lincoln	44	Rice	62		
Ellsworth	37	Linn	97	Riley	5		

Summary Health Outcomes & Health Factors Rankings

Counties receive two summary ranks:

- Health Outcomes
- Health Factors

Each of these ranks represents a weighted summary of a number of measures.

Health outcomes represent how healthy a county is while health factors represent what influences the health of the county.

Rank	Health Outcomes	Rank	Health Factors
1	Riley	1	Johnson
2	Johnson	2	Nemaha
3	Doniphan	3	McPherson
4	Ellis	4	Comanche
5	Coffey	5	Riley
6	Pottawatomie	6	Ottawa
7	Douglas	7	Smith
8	Ottawa	8	Scott
9	Kingman	9	Harvey
10	Sheridan	10	Mitchell
11	McPherson	11	Ellis
12	Kearny	12	Sheridan
13	Stevens	13	Douglas
14	Haskell	14	Gove
15	Kiowa	15	Clay
16	Marshall	16	Pottawatomie
17	Phillips	17	Wabaunsee
18	Dickinson	18	Cheyenne
19	Ellsworth	19	Thomas
20	Finney	20	Gray
21	Wabaunsee	21	Kiowa
22	Leavenworth	22	Miami
23	Mitchell	23	Washington
24	Ford	24	Republic
25	Clay	25	Logan
26	Miami	26	Marion
27	Lyon	27	Jewell
28	Barber	28	Ness
29	Harvey	29	Pratt
30	Chase	30	Rawlins
31	Scott	31	Butler
32	Smith	32	Kingman
33	Nemaha	33	Graham
34	Meade	34	Phillips
35	Graham	35	Clark
36	Lincoln	36	Osborne
37	Butler	37	Ellsworth
38	Reno	38	Trego
39	Seward	39	Chase
40	Rawlins	40	Cloud
41	Rush	41	Meade
42	Decatur	42	Edwards

Rank	Health Outcomes	Rank	Health Factors
43	Anderson	43	Jefferson
44	Gove	44	Lincoln
45	Lane	45	Marshall
46	Atchison	46	Dickinson
47	Morton	47	Norton
48	Republic	48	Coffey
49	Comanche	49	Lane
50	Edwards	50	Rooks
51	Jefferson	51	Morris
52	Marion	52	Hamilton
53	Franklin	53	Rush
54	Cheyenne	54	Kearny
55	Osborne	55	Haskell
56	Norton	56	Leavenworth
57	Osage	57	Jackson
58	Thomas	58	Reno
59	Jewell	59	Barber
60	Ness	60	Lyon
61	Logan	61	Sherman
62	Jackson	62	Rice
63	Harper	63	Barton
64	Barton	64	Russell
65	Shawnee	65	Grant
66	Clark	66	Stafford
67	Washington	67	Decatur
68	Hamilton	68	Pawnee
69	Trego	69	Franklin
70	Pratt	70	Cowley
71	Grant	71	Saline
72	Sedgwick	72	Sedgwick
73	Morris	73	Ford
74	Rooks	74	Stevens
75	Saline	75	Shawnee
76	Gray	76	Anderson
77	Stafford	77	Sumner
78	Rice	78	Morton
79	Russell	79	Doniphan
80	Pawnee	80	Harper
81	Sumner	81	Osage
82	Cowley	82	Greenwood
83	Neosho	83	Allen
84	Sherman	84	Bourbon
85	Linn	85	Crawford
86	Cloud	86	Chautauqua
87	Wilson	87	Elk
88	Crawford	88	Neosho
89	Brown	89	Labette
90	Geary	90	Geary

Rank	Health Outcomes	Rank	Health Factors
91	Labette	91	Woodson
92	Bourbon	92	Atchison
93	Allen	93	Finney
94	Greenwood	94	Seward
95	Elk	95	Brown
96	Cherokee	96	Cherokee
97	Wyandotte	97	Linn
98	Chautauqua	98	Montgomery
99	Montgomery	99	Wilson
100	Woodson	100	Wyandotte

Not Ranked: Greeley, Hodgeman, Stanton, Wallace, Wichita

2012 County Health Rankings: Measures, Data Sources, and Years of Data

	Measure	Data Source	Years of Data
HEALTH OUTCOMES			
Mortality	Premature death	National Center for Health Statistics	2006-2008
Morbidity	Poor or fair health	Behavioral Risk Factor Surveillance System	2004-2010
	Poor physical health days	Behavioral Risk Factor Surveillance System	2004-2010
	Poor mental health days	Behavioral Risk Factor Surveillance System	2004-2010
	Low birthweight	National Center for Health Statistics	2002-2008
HEALTH FACTORS			
HEALTH BEHAVIORS			
Tobacco Use	Adult smoking	Behavioral Risk Factor Surveillance System	2004-2010
Diet and Exercise	Adult obesity	National Center for Chronic Disease Prevention and Health Promotion	2009
	Physical inactivity	National Center for Chronic Disease Prevention and Health Promotion	2009
Alcohol Use	Excessive drinking	Behavioral Risk Factor Surveillance System	2004-2010
	Motor vehicle crash death rate	National Center for Health Statistics	2002-2008
Sexual Activity	Sexually transmitted infections	National Center for Hepatitis, HIV, STD and TB Prevention	2009
	Teen birth rate	National Center for Health Statistics	2002-2008
CLINICAL CARE			
Access to Care	Uninsured	Small Area Health Insurance Estimates	2009
	Primary care physicians	Health Resources & Services Administration	2009
Quality of Care	Preventable hospital stays	Medicare/Dartmouth Institute	2009
	Diabetic screening	Medicare/Dartmouth Institute	2009
	Mammography screening	Medicare/Dartmouth Institute	2009
SOCIAL AND ECONOMIC FACTORS			
Education	High school graduation	National Center for Education Statistics and state-specific sources ¹	2008-2010
	Some college	American Community Survey	2006-2010
Employment	Unemployment	Bureau of Labor Statistics	2010
Income	Children in poverty	Small Area Income and Poverty Estimates	2010
Family and Social Support	Inadequate social support	Behavioral Risk Factor Surveillance System	2006-2010
	Children in single-parent households	American Community Survey	2006-2010
Community Safety	Violent crime rate ²	Federal Bureau of Investigation	2007-2009
PHYSICAL ENVIRONMENT			
Environmental Quality ³	Air pollution-particulate matter days	U.S. Environmental Protection Agency	2007
	Air pollution-ozone days	U.S. Environmental Protection Agency	2007
Built Environment	Access to recreational facilities	Census County Business Patterns	2009
	Limited access to healthy foods ⁴	U.S. Department of Agriculture	2006
	Fast food restaurants	Census County Business Patterns	2009

¹ NCES used for AK, AL, AR, CA, CT, FL, HI, ID, KY, MT, ND, NJ, OK, SD and TN

² State data source for IL.

³ Not available for AK and HI.

⁴ Access to Healthy Foods (2009) from Census Zip Code Business Patterns for AK and HI.

CREDITS

Report Authors

University of Wisconsin-Madison
School of Medicine and Public Health
Department of Population Health Sciences
Population Health Institute

Bridget Booske Catlin, PhD, MHSA
Amanda Jovaag, MS
Patrick Remington, MD, MPH

This publication would not have been possible without the following contributions:

Technical Advisor

Amy Bernstein, ScD, Centers for Disease Control and Prevention

Research Assistance

Jennifer Buechner
Hyojun Park, MA
Jennifer Robinson
Matthew Rodock, MPH
Anne Roubal

Communications and Outreach

Burness Communications
Anna Grilley
Anna Graupner, MPH
Kate Konkle, MPH
Angela Russell, MS
Julie Willems Van Dijk, PhD, RN

Design

Forum One, Alexandria, VA
Media Solutions, UW School of Medicine and Public Health

Robert Wood Johnson Foundation

Brenda L. Henry, PhD, MPH – Senior Program Officer
Abbey Cofsky, MPH – Program Officer
Michelle Larkin, JD, MS, RN – Assistant Vice-President and Deputy Director, Health Group
James S. Marks, MD, MPH – Senior Vice-President and Group Director, Health Group
Joe Marx – Senior Communications Officer

Suggested citation: University of Wisconsin Population Health Institute. *County Health Rankings 2012*.



**County Health
Rankings & Roadmaps**
A Healthier Nation, County by County

countyhealthrankings.org



University of Wisconsin Population Health Institute
610 Walnut St, #524, Madison, WI 53726
(608) 265-6370 / info@countyhealthrankings.org

