



KANSAS HEALTH INSTITUTE

*Informing Policy. Improving Health.*

# 2021 COUNTY HEALTH RANKINGS:

*Leveraging Data and Tools*

---

November 4, 2021

Tatiana Lin, M.A., Team Leader for Population Health

# www.countyhealthrankings.org


**County Health Rankings & Roadmaps**  
Building a Culture of Health, County by County

About Us | News & Events

Explore Health Rankings ▾Take Action to Improve Health ▾Learn From Others ▾What Is Health?ReportsQ

## Growing community power to improve health equity

We believe in a future where everyone has opportunities to be healthy and to thrive. Many factors impact how long and how well we live. Our data show how these factors shape community conditions, while highlighting the stark differences in health that stem from injustices and barriers to opportunity. Use our resources to take action toward better health for all.



### How healthy is your community?

Search by State, County, or ZIP Code (e.g. New Mexico, Los Alamos, 87544)

Search

## County Health Rankings & Roadmaps

Building a Culture of Health, County by County

A Robert Wood Johnson Foundation program

Health

Health, Science and Tech

## Which Kansas Counties Are Healthiest?

KMUW | By Bryan Thompson  
Published March 21, 2013 at 5:00 AM CDT



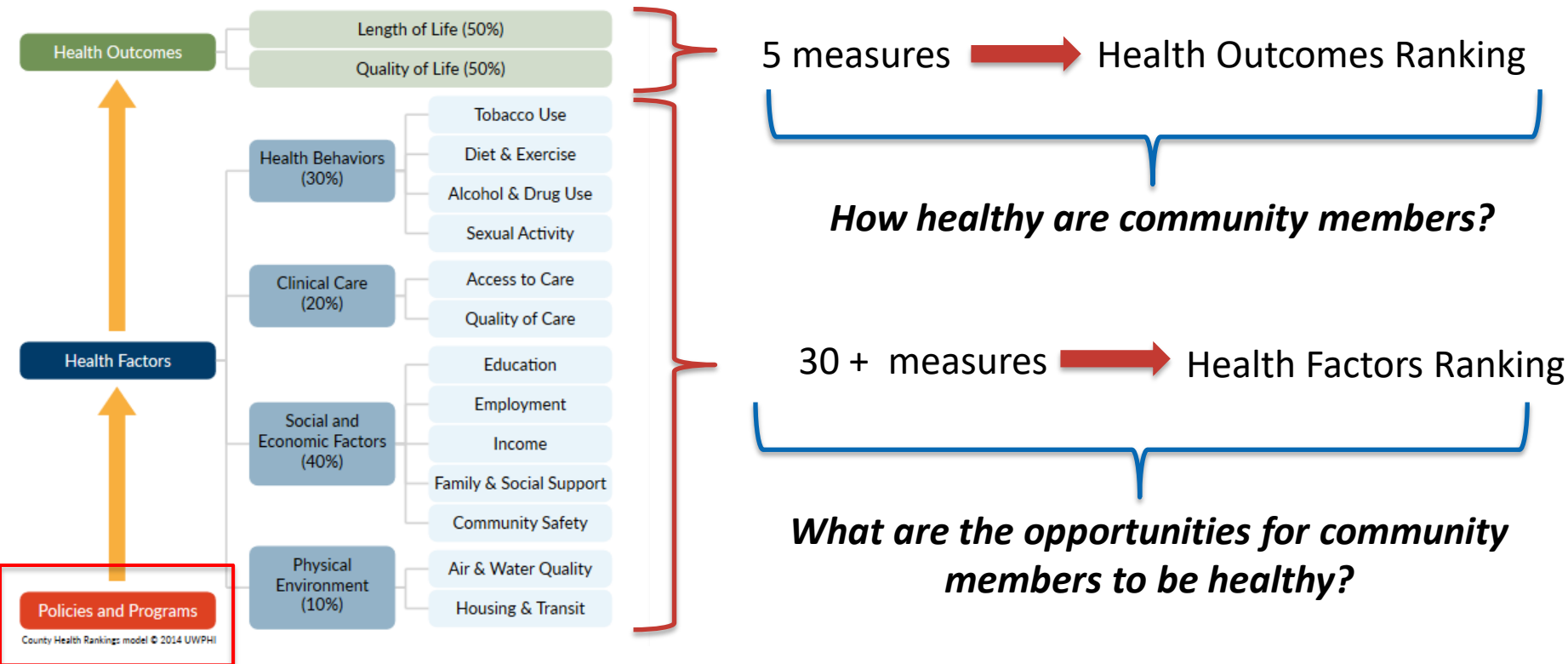
## Kearny County shoots up in Kansas health ranking



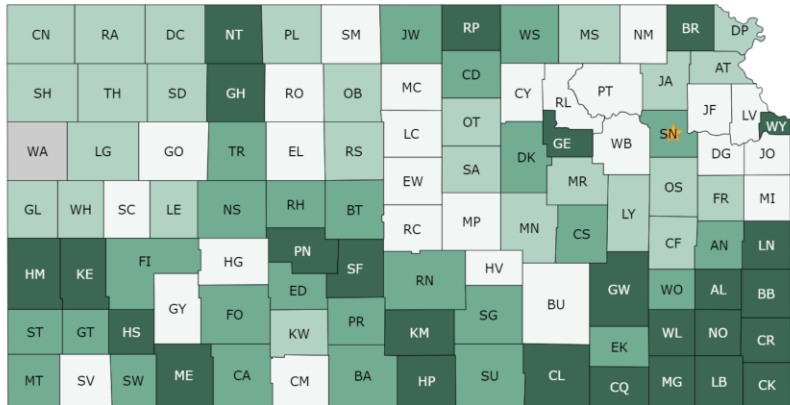
## Shawnee County health behavior rankings drop








# COUNTY HEALTH RANKINGS MODEL

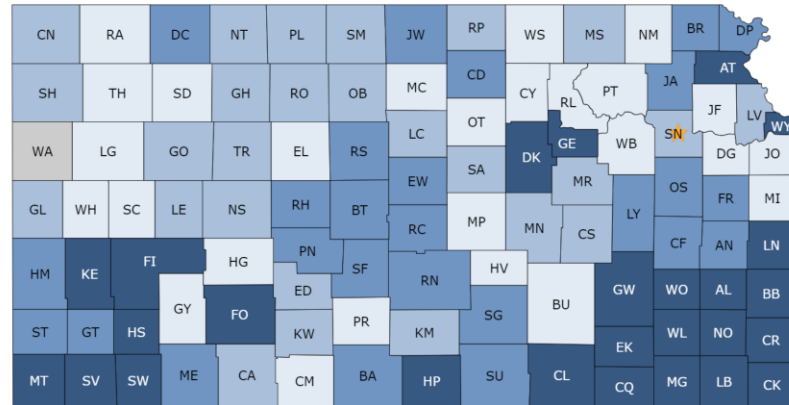


## 2021 Health Outcomes - Kansas



Health Outcome Ranks  1 to 26  27 to 52  53 to 78  79 to 104  Not Ranked

## 2021 Health Factors - Kansas



Health Factor Ranks

# WHAT IMPACTS FOOD INSECURITY?

## Food Insecurity is a Complex Problem

### Primary Drivers of Food Insecurity



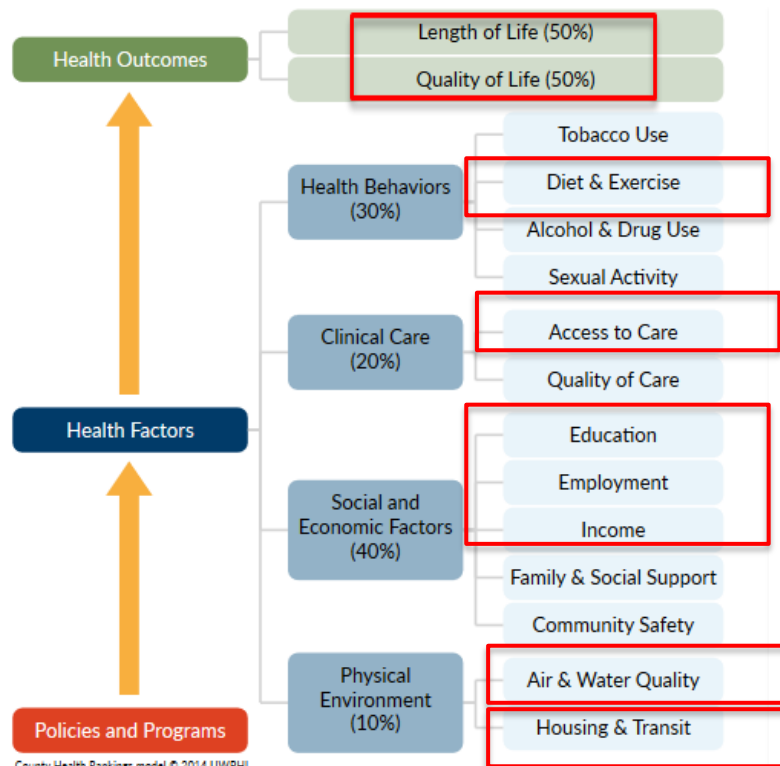
Needs don't exist in isolation and families are making tough tradeoffs to meet basic needs



CHR draws attention to many factors that impact food insecurity

*Source: Hunger + Health, a partner site of Feeding America*

# CHR AND FOOD INSECURITY



Components of CHR Model	County Health Rankings: Food Insecurity Related Indicators
Length of Life	Years of potential life lost before age 75 per 100,000 population (age-adjusted)
Quality of Life	Average number of mentally unhealthy days reported in past 30 days (age-adjusted)
	Percentage of live births with low birthweight (< 2,500 grams)
Behaviors	Percentage of the adult population (age 20 and older) that reports a body mass index (BMI) greater than or equal to 30 kg/m
	Food Environmental Index
Clinical Care	Percentage of population under age 65 without health insurance
Social and Economic Facts	Percentage of adults ages 25 and over with a high school diploma or equivalent
	Percentage of population ages 16 and older unemployed but seeking work
	Percentage of people under age 18 in poverty
	Percentage of children that live in a household headed by single parent
	Percentage of households with at least 1 of 4 housing problems: overcrowding, high housing costs, lack of kitchen facilities, or lack of plumbing facilities
	Indicator of the presence of health-related drinking water violations. 'Yes' indicates the presence of a violation, 'No' indicates no violation

# Shawnee County

# 47

Health Factors Rank

# 64

Health Outcomes Rank

Population: 176,875



KANSAS HEALTH INSTITUTE

Informing Policy. Improving Health.

County Health  
Rankings & Roadmaps

Building a Culture of Health, County by County

A Robert Wood Johnson Foundation program

khi.org | countyhealthrankings.org

# 2021

	2017	2018	2019	2020	2021	Kansas 2021
Number of Counties Ranked	102	103	102	104	104	104
<b>Health Outcomes - Rank</b>	<b>65</b>	<b>61</b>	<b>79</b>	<b>81</b>	<b>64</b>	<b>N/A</b>
<b>Length of life - Rank</b>	<b>43</b>	<b>47</b>	<b>78</b>	<b>81</b>	<b>82</b>	<b>N/A</b>
Premature death (years of potential life lost, per 100,000)	7544	7676	8644	8839	8864	7079
<b>Quality of life - Rank</b>	<b>77</b>	<b>72</b>	<b>75</b>	<b>78</b>	<b>42</b>	<b>N/A</b>
% Reporting poor or fair health, adults <sup>#</sup>					16	16
Average number of poor physical health days, adults <sup>#</sup>					4	4
Average number of poor mental health days, adults <sup>#</sup>					4	4
% Low birthweight, <2,500 grams	7.5	7.2	7.3	7.3	7.1	7.2
<b>Health Factors - Rank</b>	<b>78</b>	<b>56</b>	<b>59</b>	<b>78</b>	<b>47</b>	<b>N/A</b>
<b>Health Behaviors - Rank</b>	<b>91</b>	<b>63</b>	<b>60</b>	<b>90</b>	<b>45</b>	<b>N/A</b>
% Smokers, adults <sup>#</sup>					20	18
% Obese, adults age 20 and older	33	35	36	37	37	33
Food environment index, 0 (worst) to 10 (best)	6.8	7.3	7.4	7.4	7.5	6.7

Source: Kansas Health Institute, <https://www.khi.org/policy/article/2021-CHR>

### Health Factors: Drivers with greatest impact on ranking, Shawnee County, KS - 2021

	Measure	Description	Factor Category	County Value	State Value	Impact on Rankings
1	Sexually transmitted infections	Number of newly diagnosed chlamydia cases per 100,000 population.	Health Behaviors	716	489	-
2	Unemployment	Percentage of population ages 16 and older unemployed but seeking work.	Social and Economic Environment	3.3%	3.2%	-
3	Children in poverty	Percentage of people under age 18 in poverty.	Social and Economic Environment	13%	14%	+
4	Excessive drinking	Percentage of adults reporting binge or heavy drinking (age-adjusted).	Health Behaviors	16%	18%	+
5	Flu vaccinations	Percentage of fee-for-service (FFS) Medicare enrollees that had an annual flu vaccination.	Clinical Care	59%	49%	+

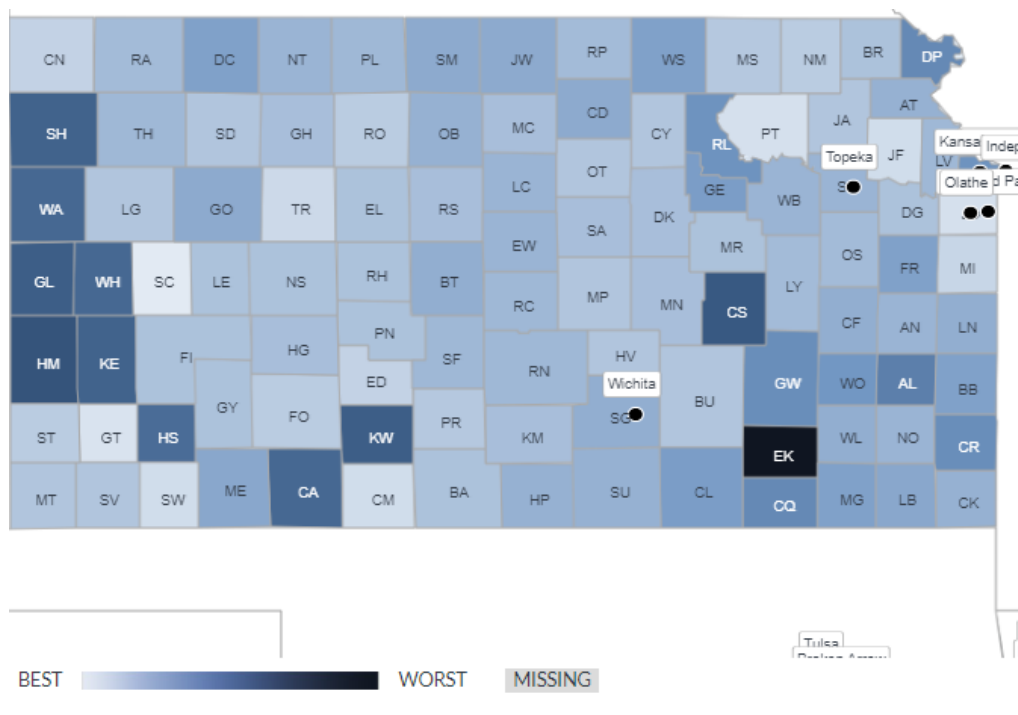
Source: Kansas Health Institute, <https://www.khi.org/policy/article/2021-CHR>

# FOOD ENVIRONMENTAL INDEX

Best: Scott

Worst: Elk

Data Years: 2015  
& 2018



Source: County Health Rankings and Roadmaps, 2021

# CHR = MORE THAN DATA

- **Action Center** — steps to move efforts forward
- **What Works for Health** — database of evidence-based policies and programs
- **Partner Center** — strategies to engage partners
- **Action Learning Guides** — topic specific guidance (e.g., Introduction to Equity)



# OTHER DATA SOURCES

# MEAL GAP, FEEDING AMERICA

## 2019 Child County Food Insecurity In Kansas



FOOD INSECURE CHILDREN IN KANSAS

120,090



CHILD FOOD INSECURITY RATE IN KANSAS



ESTIMATED PROGRAM ELIGIBILITY AMONG FOOD INSECURE CHILDREN IN KANSAS



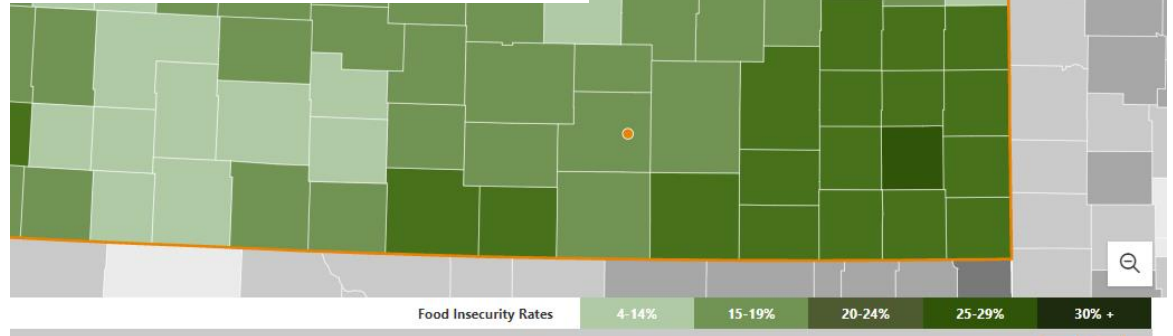
40% Likely ineligible for federal nutrition programs (incomes above 185% of poverty)  
60% Income eligible for federal nutrition programs (incomes at or below 185% of poverty)

AVERAGE MEAL COST IN KANSAS

\$2.96

ANNUAL FOOD BUDGET SHORTFALL

\$177,384,000



<https://www.feedingamerica.org/>

# KANSAS HEALTH MATTERS

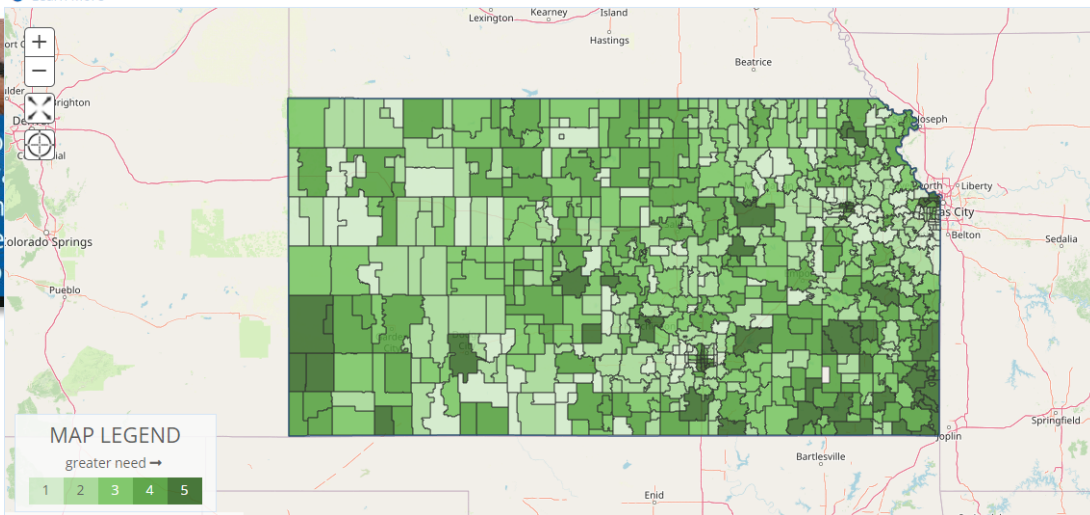


 **COVID-19 (Coronavirus) Update**  
For the most accurate and up to date information, please visit the [Kansas Department of Health](#) or the [Centers for Disease Control and Prevention](#).

## Food Insecurity Index

The **2020 Food Insecurity Index**, created by [Conduent Healthy Communities Institute](#), is a measure of food access that is correlated with economic and household hardship. All zip codes, census tracts, counties, and county equivalents in the United States are given an **index value** from 0 (low need) to 100 (high need). To help you find the areas of highest need in your community, the selected locations are **ranked** from 1 (low need) to 5 (high need) based on their index value.

[Learn More](#)



KansasHealthMatters.org



KANSAS HEALTH INSTITUTE

*Informing Policy. Improving Health.*

# THANK YOU

## Any questions?

You can connect with me at: [tlin@khi.org](mailto:tlin@khi.org)

 212 SW 8<sup>th</sup> Avenue | Suite 300  
Topeka, Kansas | 66603-3936

 785.233.5443

 [khi.org](http://khi.org)

 /KHIorg

 @KHIorg  
16



KANSAS HEALTH INSTITUTE

---

*Informing Policy. Improving Health.*