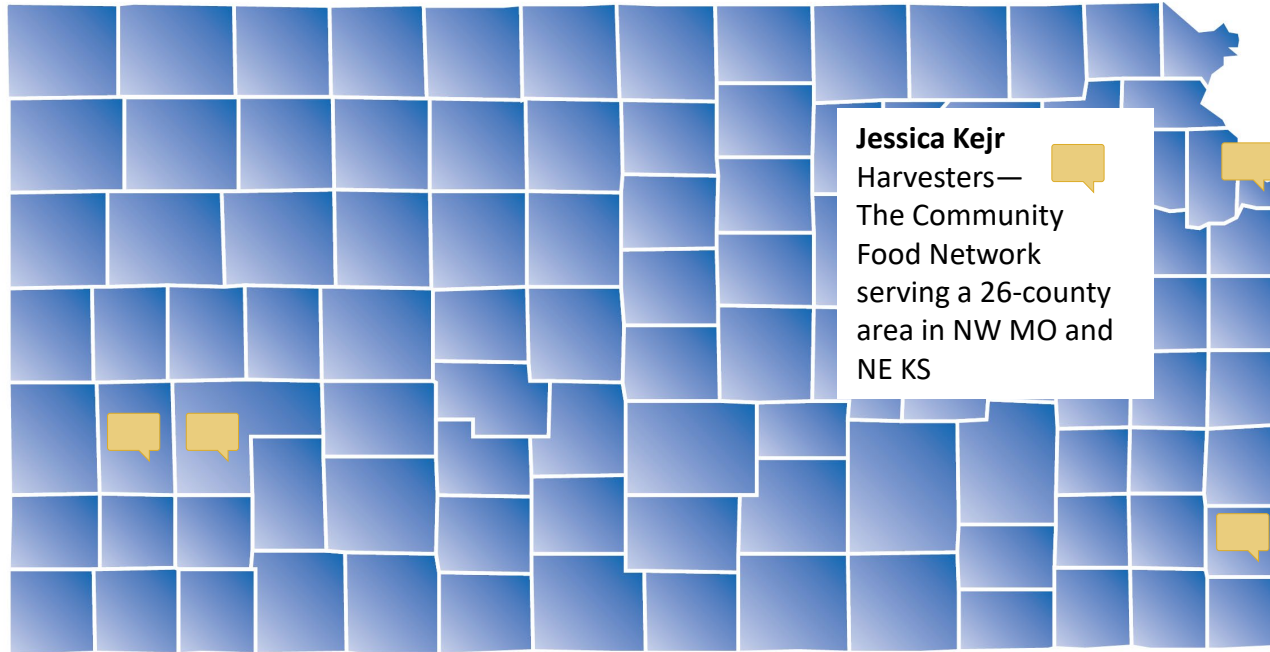


LIGHTNING TALKS



Lacey Mollel
Kearny County
Hospital

Geovannie Gone
Genesis Family
Health

Jessica Kejr
Harvesters—
The Community
Food Network
serving a 26-county
area in NW MO and
NE KS

Andrea Clark
KC Healthy Kids

Matt O'Malley
Live Well
Crawford County



Resource Connections:
SNAP Outreach and Application Assistance in Kansas

SNAP Overview

- SNAP is the nation's first line of defense against hunger, providing food benefits that are timely, targeted, and temporary.
- Eligibility vs. Participation:
 - Only 77% of Kansans who were eligible received benefits in 2016.
- Impact:
 - Every \$1 invested in SNAP results in \$1.79 in local economic activity.
 - Kansas has more than 2,000 retail locations accepting SNAP and fully 97% of SNAP benefits are spent in the month they are received.

KANSAS FOOD ASSISTANCE PROGRAM



Jessica Kejr
jkejr@harvesters.org

State of Kansas Food Bank Service Areas



Kansas Food Bank
1,484,519 residents*

Harvesters-The Community Food Network
1,313,800 residents*

Second Harvest of Greater St. Joseph
114,995 residents*

* Based on 2019 Census estimates.

Statewide Outreach and Awareness

- Kansas Health Foundation
- Coordination among three food banks and community stakeholders
- Testing outreach messages and methods
- Target populations
- Inform outreach practices, policy efforts, or process considerations for state or food banks



SNAP Application Assistance

- Statewide SNAP Helpline at Harvesters
- Application assistance in-person or over the phone
- Electronic voice signature
- All food banks conduct outreach and awareness
 - Google SNAP, mailings, events
 - Network partners
 - Prisons and re-entry centers
 - Healthcare settings



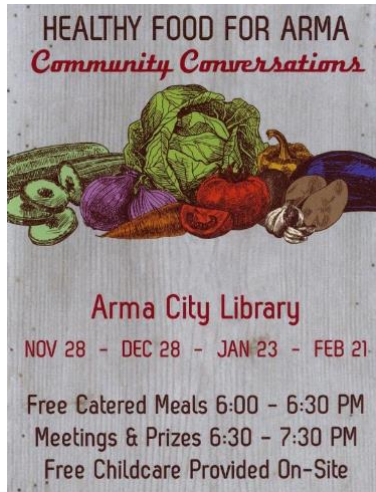
Jessica Kejr
jkejr@harvesters.org

 Building Sustainable Leadership & Systems Change

The Arma Nutrition Council



Arma residents, especially those with low-income levels, face unfair barriers to achieving their full health potential simply because of their proximity to sources of healthy foods.



Developed a team with a structure to sustain the work

- Constitution & Bylaws
- Officers & Committees
- Established monthly meetings
- Launched crowdfunding campaign



Food systems projects that the residents decided to pursue



- Arma Community Garden
- Arma City Library Food Pantry
- Northeast High School Pantry

- KSRE Nutrition Education
- USDA Commodities Program
- SNAP Application Assistance



- Tuesday meal deliveries
- School food drive contests
- Book sale pantry fundraisers



Food Access: Mobile Food Distribution in Western Kansas



Geovannie Gone, LMAC, MS

Chief Administrative Officer for
Genesis Family Health

January 2021

Received a grant to distribute

- 3,000 food boxes
- 6,000 COVID KITS

COVID 19 Impact

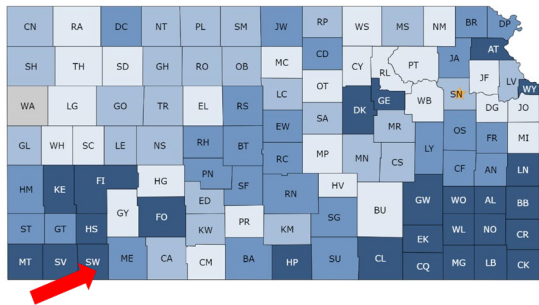
19,174 Population

4,768 infected with COVID

62% Hispanic/minority

72% in the labor force

9.8% have a bachelor's or higher



Health Factor Ranks 1 to 26 27 to 52 53 to 78 79 to 104 Not Ranked



Garden City and Dodge City



Best Practices

Community partners are key to making any community event successful



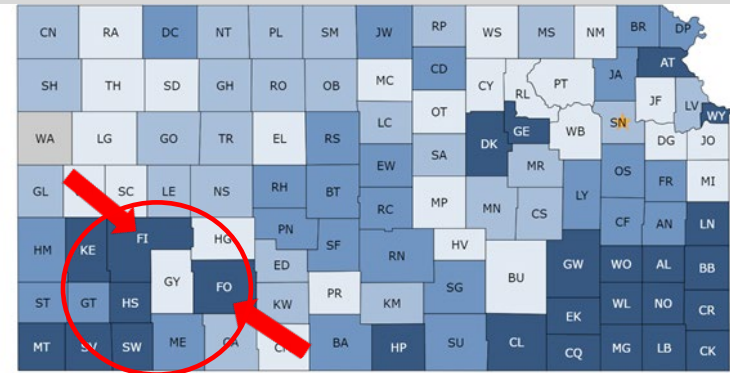
Plan ahead of time and have a backup plan



Be clear on messaging



Always thank your Volunteers





Just this year,

We have distributed more
than **11,690** food
boxes to Western Kansas.

Serving more than

61,450 individuals.

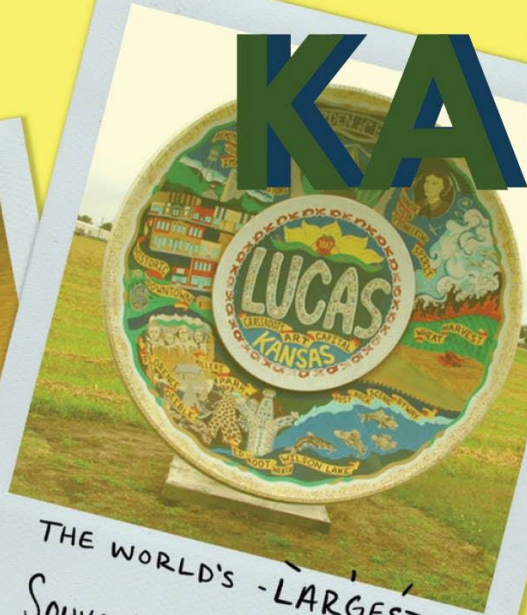


Greetings from

KANSAS



WORLD'S
LARGEST Ball of Twine



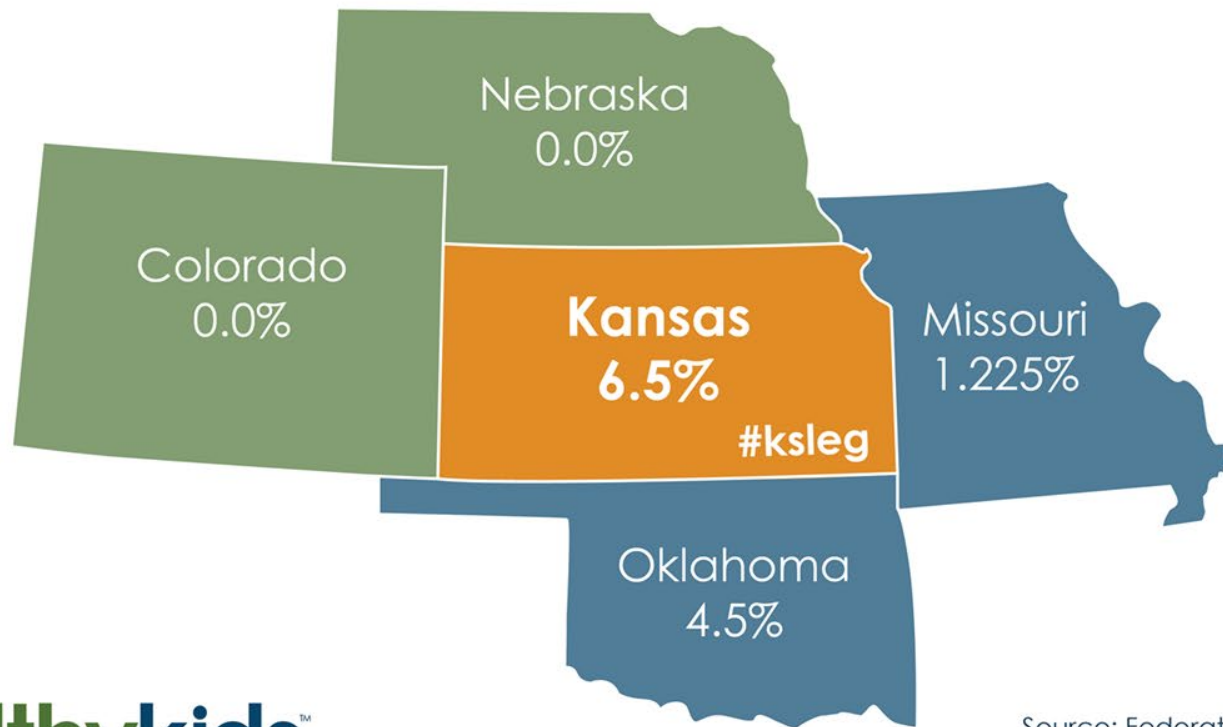
THE WORLD'S -LARGEST-
Souvenir Travel Plate



6.5%

America's HIGHEST
Sales Tax on Food

SALES TAX RATES ON FOOD



KC HEALTHY KIDS

@kchealthykids

What's on Your Receipt?

Kansans pay the highest sales tax in the nation on food.* Send your receipt to Kansas Lawmakers and tell them it's time for change.

Food isn't a luxury and should not be taxed that way.

1. **Grab** a postcard.
2. **Fill in blanks** on the back.
3. **Attach** your receipt and drop it in the box!
4. **KC Healthy Kids** will deliver the postcards to state lawmakers. Watch for photos of the drop on social media.

*Combined state and local sale tax

Kansas has the highest sales tax on food in the nation. Food isn't a luxury and shouldn't be taxed that way. It's time for change.

Producers who are already struggling to make ends meet can't bear the impact. An extra \$100 a month could mean a big difference to them.

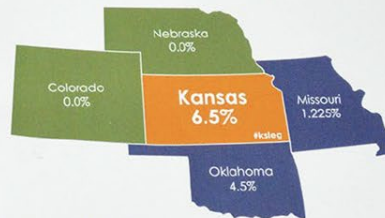
10.6% Shawnee Mission, Johnson County
Highest Sales Tax on Food in the Nation

Family-owned grocery stores cannot reduce prices enough to compete with major discount stores or lower prices offered there. These stores are closing and others across the state.

Shoppers drive across state lines to buy groceries. Some even have up to 3 hours to shop for free in neighboring states. Kansas businesses lose out.

kchealthykids

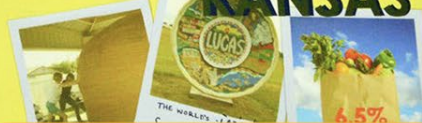
SALES TAX RATES ON FOOD



kchealthykids

Greetings from

KANSAS



PHILLY AWARD: **GOLD**
Marketing Campaign
Under \$3M Annual Income

Rep. Trent Jacobs
(friend)

 PEOPLE'S
GROCERY

Representative
Kenneth
Collins
(Moran & Michael
Baronson, Esq.)

Senator
Caryn Tyson

Red
men
Ratjes

Den Grootland
Sireler



Representative
Adam Thomas
Missouri State Capitol
6 SW 10th Street
Topeka, KS 66612

Dear Rep. Mark Samuels

Rep
Mark Sammel
@sammel

Kansans pay the
on food in the n

Snte
Richard
Hildebrand