



KANSAS HEALTH INSTITUTE

Informing Policy. Improving Health.

DEMYSTIFYING THE RANKINGS:

*Practical Applications for Effective
Policymaking*

April 22, 2021

Virtual Convening

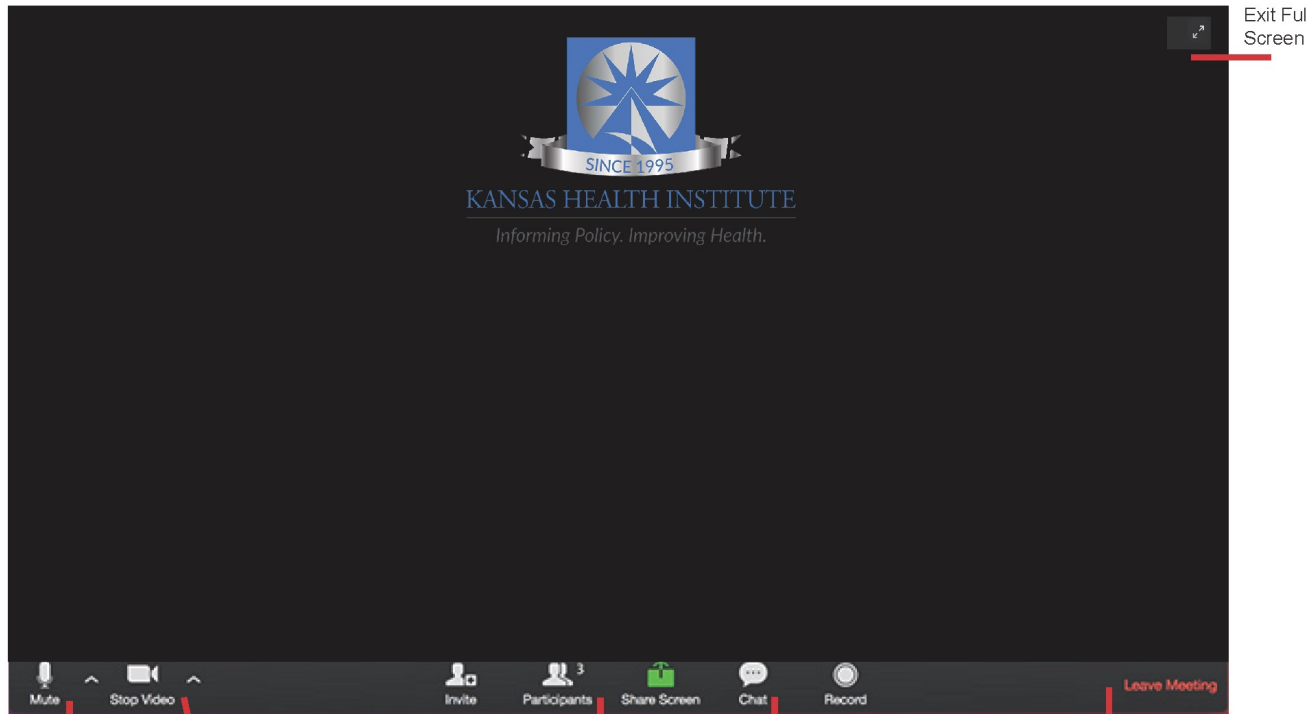
Zoom Norms and Recommendations:

- Have access to the Chat Window and be ready to type.
- Mute when not speaking.
- Use headphones to reduce background noise.
- Technical issues can be raised in the Chat Window, “IT Help”.



KANSAS HEALTH INSTITUTE

Informing Policy. Improving Health.



Helpful Hints for KHI Zoom Meetings

If you would like to minimize the number of participants appearing on your screen, you can hide all nonvideo participants using the “three dots” that appear as you hover over a participant’s window. If you have technical questions, please add them to the chat window. Thank you!

Mute

Stop or Start
Video

Click on arrow by participants. At the Right Lower corner click on Raise Hand. When you click on Raise Hand a blue hand appears in the upper Right Hand corner. When you want to lower your hand, click on the Lower Hand icon.

Chat: Click to read or type to chat. Please use chat function to ask questions.

Leave Meeting

WHO WE ARE

- Nonprofit, nonpartisan educational organization based in Topeka.
- Established in 1995 with a multi-year grant by the Kansas Health Foundation and located directly across from Kansas Statehouse.
- Committed to convening meaningful conversations around tough topics related to health.

TODAY'S AGENDA

1. Considerations for interpreting rankings
2. Overview of three health-related rankings
 - Mental Health in America Rankings
 - America's Health Rankings
 - County Health Rankings & Roadmaps
3. Practical applications for policy-making
 - Panel discussion

PANELISTS



Brian McKiernan
Commissioner for the
Unified Government of Wyandotte County/Kansas City,
Kansas, District 2



Mary C. Jones, LCMFT, LCAC
President and CEO
Mental Health Association of South Central Kansas



Hina Shah, M.P.H.
Senior Analyst



Tatiana Lin, M.A.
Senior Analyst &
Strategy Team Leader



D. Charles Hunt, M.P.H.
Senior Analyst

Hina Shah, Tatiana Lin & D. Charles Hunt

Kansas Health Institute

1.

CONSIDERATIONS FOR INTERPRETING RANKINGS

HOW ARE RANKINGS HELPFUL?



Social Determinants of Health



CONSIDERATIONS AROUND RANKINGS

Who
Publishes

What is
Published

Initial
Launch

Most Recent
Edition

Unit of
Analysis

Number of
Data Sources

Indicators

Domains

Composite
Scores

Weighting

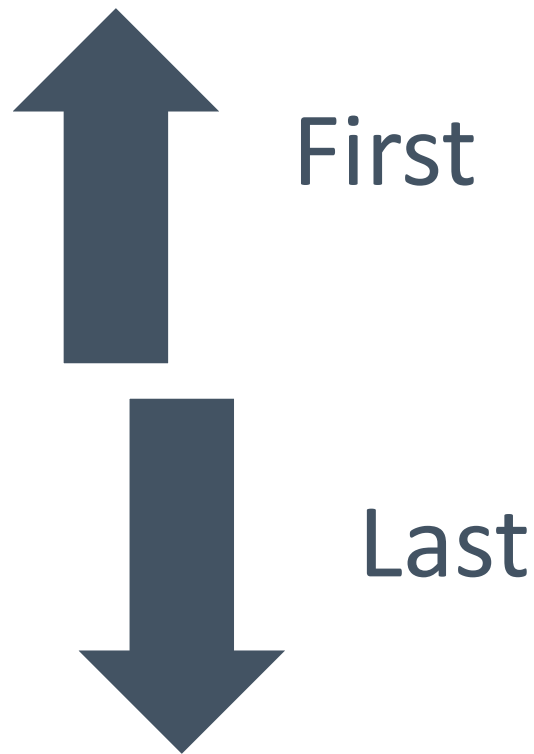
Selection of
Measures

Data Years

Limitations

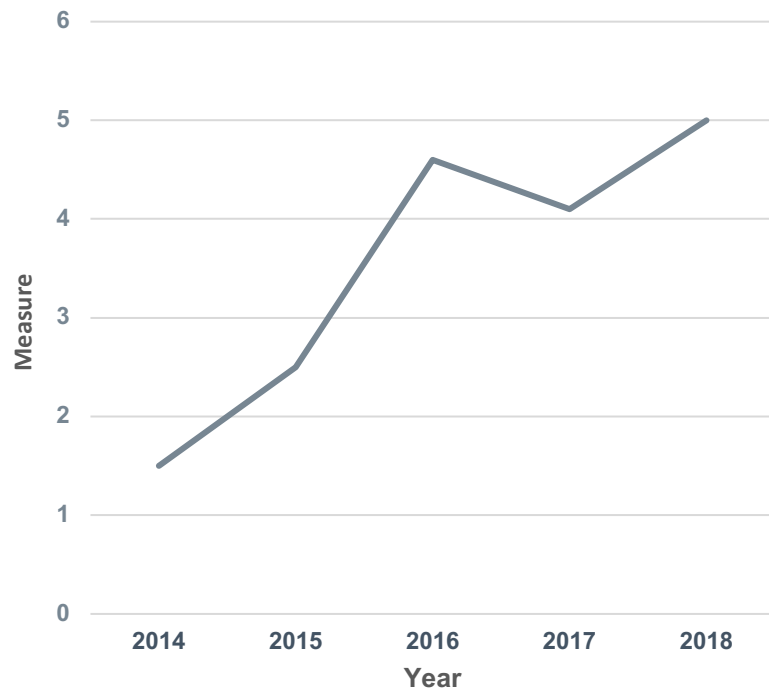
CONSIDERATIONS AROUND RANKINGS

The rank of a state or county depends on what is happening in other states or counties, meaning rankings are a relative measure of health.



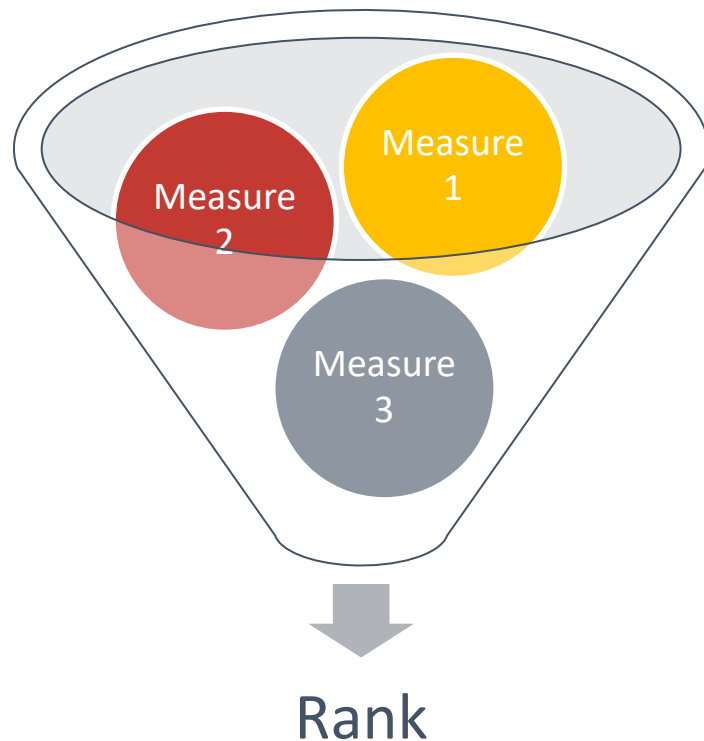
CONSIDERATIONS AROUND RANKINGS

To monitor progress over time, it is important to examine the underlying measures because not all changes in rank translate into actual declines or improvements in health.



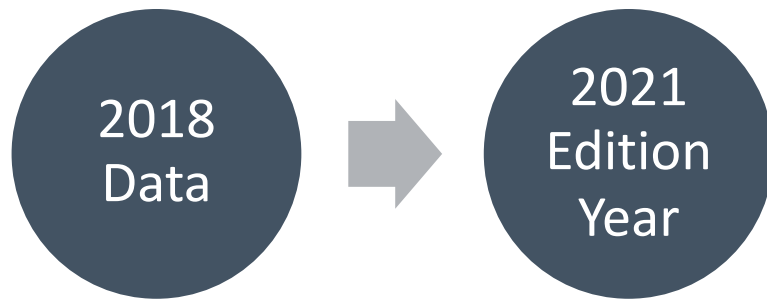
CONSIDERATIONS AROUND RANKINGS

The measures that are used to compile the rankings are diverse, and their sources and methodologies can change over time.



CONSIDERATIONS AROUND RANKINGS

While the most recently available data are used in the rankings, the edition year of the ranking is not the same as the associated data year(s), meaning there is a lag in the data.



CONSIDERATIONS AROUND RANKINGS

For some measures, multiple years of data are combined to achieve a sufficient sample size and provide a reliable estimate.





HOW TO USE RANKINGS

Rankings can serve as a starting point for conversations.



County Health Rankings & Roadmaps

Building a Culture of Health, County by County

Source: Mental Health America, America's Health Rankings, County Health Rankings & Roadmaps.

2.

MENTAL HEALTH IN AMERICA RANKINGS

ANNUAL REPORT



DOMAINS AND TOPIC AREAS

Mental Health
Issues

Substance Use
Issues

Access to
Insurance

Access to
Adequate
Insurance

Access to
and Barriers to
Accessing Mental
Health Care

Source: Mental Health America

2021 Measures

1. Adults with Any Mental Illness (AMI)
2. Adults with Substance Use Disorder in the Past Year
3. Adults with Serious Thoughts of Suicide
4. Youth with At Least One Major Depressive Episode (MDE) in the Past Year
5. Youth with Substance Use Disorder in the Past Year
6. Youth with Severe MDE
7. Adults with AMI who Did Not Receive Treatment
8. Adults with AMI Reporting Unmet Need
9. Adults with AMI who are Uninsured
10. Adults with Disability who Could Not See a Doctor Due to Costs
11. Youth with MDE who Did Not Receive Mental Health Services
12. Youth with Severe MDE who Received Some Consistent Treatment
13. Children with Private Insurance that Did Not Cover Mental or Emotional Problems
14. Students Identified with Emotional Disturbance for an Individualized Education Program
15. Mental Health Workforce Availability

METHODOLOGY

A standardized score is calculated for each measure for each state

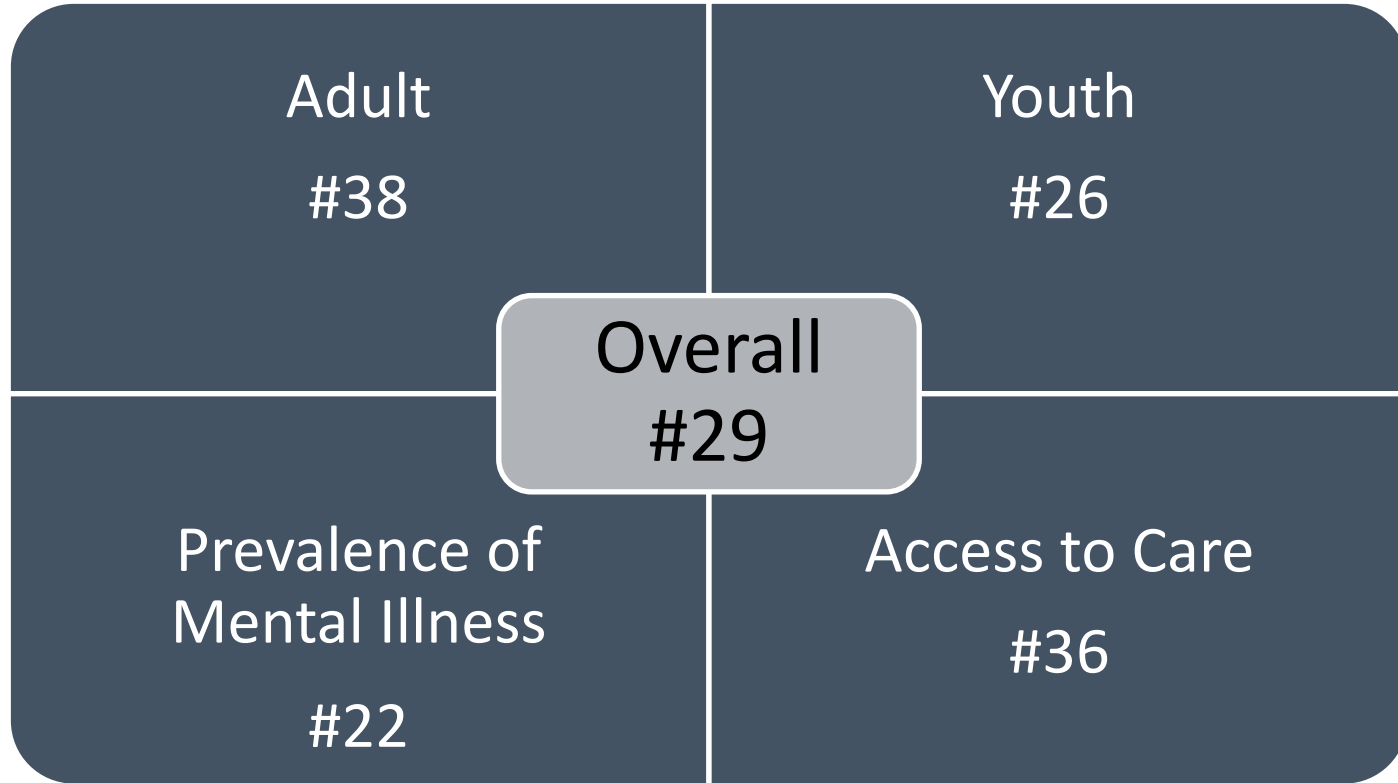


No weights are applied for any measure



State is ranked by sum (Σ) of the standardized scores for all measures

2021 KANSAS MHA RANKINGS



Source: Mental Health America

LARGEST CHANGES IN OVERALL RANKINGS: 2020-2021

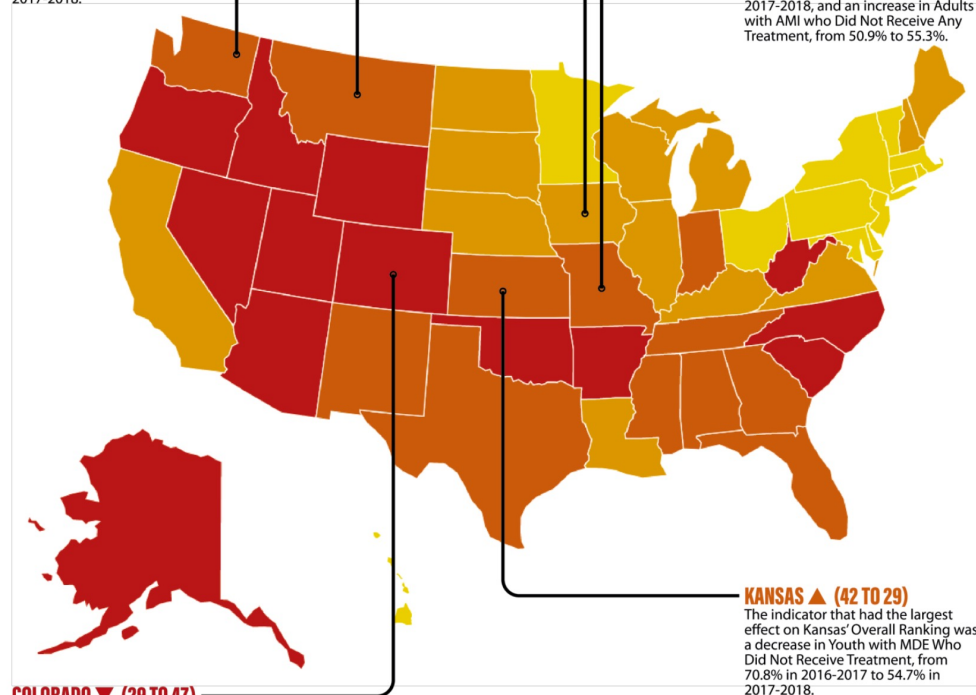
- The indicator that had the largest effect on the Kansas Overall Ranking was a decrease in Youth with a Major Depressive Disorder Who Did Not Receive Treatment.

MONTANA ▲ (43 TO 30)
The indicator that had the largest effect on Montana's Overall Ranking was a decrease in Youth with MDE Who Did Not Receive Treatment, from 63.2% in 2016-2017 to 55.6% in 2017-2018.

WASHINGTON ▲ (45 TO 31)
The indicator that had the largest effect on Washington's Overall Ranking was a decrease in Youth with MDE Who Did Not Receive Treatment, from 59.1% in 2016-2017 to 47.0% in 2017-2018.

IOWA ▼ (9 TO 23)
Largest effects on the overall ranking for Iowa were an increase in the percent of Adults reporting Unmet Need, from 18.2% in 2016-2017 to 25.5% in 2017-2018 and the percent of Adults who are uninsured, from 3.3% in 2016-2017 to 8.4% in 2017-2018.

MISSOURI ▼ (25 TO 38)
The largest effects on the Overall Ranking for Missouri were a decrease in Youth with Severe MDE who Received Some Consistent Treatment, from 36.7% in 2016-2017 to 19.0% in 2017-2018, and an increase in Adults with AMI who Did Not Receive Any Treatment, from 50.9% to 55.3%.



COLORADO ▼ (29 TO 47)
The largest effect on the overall ranking for Colorado was an increase in the prevalence of Adults with Substance Use Disorder, from 9.07% in 2016-2017 to 11.9% in 2017-2018.

INFORM POLICYMAKING

Were there any significant policy changes or program initiatives for Youth with Major Depressive Episode between 2016-2018?

Mental Health America - Ranked Measures	KS Rank
1. Adults with Any Mental Illness (AMI)	#25
2. Adults with Substance Use Disorder in the Past Year	#14
3. Adults with Serious Thoughts of Suicide	#32
4. Youth with At Least One Major Depressive Episode (MDE) in the Past Year	#35
5. Youth with Substance Use Disorder in the Past Year	#13
6. Youth with Severe MDE	#29
7. Adults with AMI who Did Not Receive Treatment	#12
8. Adults with AMI Reporting Unmet Need	#51
9. Adults with AMI who are Uninsured	#37
10. Adults with Cognitive Disability who Could Not See a Doctor Due to Costs	#36
11. Youth with MDE who Did Not Receive Mental Health Services	#18
12. Youth with Severe MDE who Received Some Consistent Treatment	#21
13. Children with Private Insurance that Did Not Cover Mental or Emotional Problems	#34
14. Students Identified with Emotional Disturbance for an Individual Education Program	#39
15. Mental Health Workforce Availability	#36

Mental Health America - Ranked Measures	KS Rank
1. Adults with Any Mental Illness (AMI)	#25
2. Adults with Substance Use Disorder in the Past Year	#14
3. Adults with Serious Thoughts of Suicide	#32
4. Youth with At Least One Major Depressive Episode (MDE) in the Past Year	#35
5. Youth with Substance Use Disorder in the Past Year	#13
6. Youth with Severe MDE	#29
7. Adults with AMI who Did Not Receive Treatment	#12
8. Adults with AMI Reporting Unmet Need	#51
9. Adults with AMI who are Uninsured	#37
10. Adults with Cognitive Disability who Could Not See a Doctor Due to Costs	#36
11. Youth with MDE who Did Not Receive Mental Health Services	#18
12. Youth with Severe MDE who Received Some Consistent Treatment	#21
13. Children with Private Insurance that Did Not Cover Mental or Emotional Problems	#34
14. Students Identified with Emotional Disturbance for an Individual Education Program	#39
15. Mental Health Workforce Availability	#36

MHA MEASURE – ADULTS WITH AMI WHO REPORT UNMET NEEDS

Edition Year	Data Year	Kansas	Iowa	Oklahoma	Texas	United States
2015	2010-2012	28.1 (#51)	18.2 (#7)	18.6 (#11)	19.3 (#14)	20.8
2017	2009-2014	22.7 (#38)	21.7 (#33)	19.2 (#20)	18.3 (#8)	20.3
2019	2014-2016	21.0 (#29)	19.2 (#13)	19.8 (#17)	16.7 (#3)	20.6
2021	2017-2018	31.6 (#51)	25.5 (#35)	23.5 (#21)	19.9 (#3)	23.6

“

**Examine the values
of the underlying
measures.**

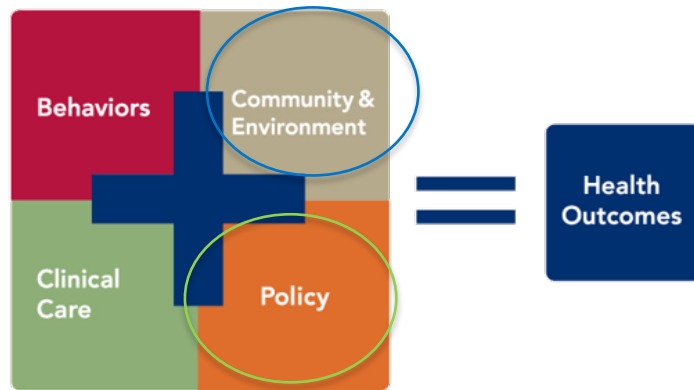
3.

AMERICA'S HEALTH RANKINGS

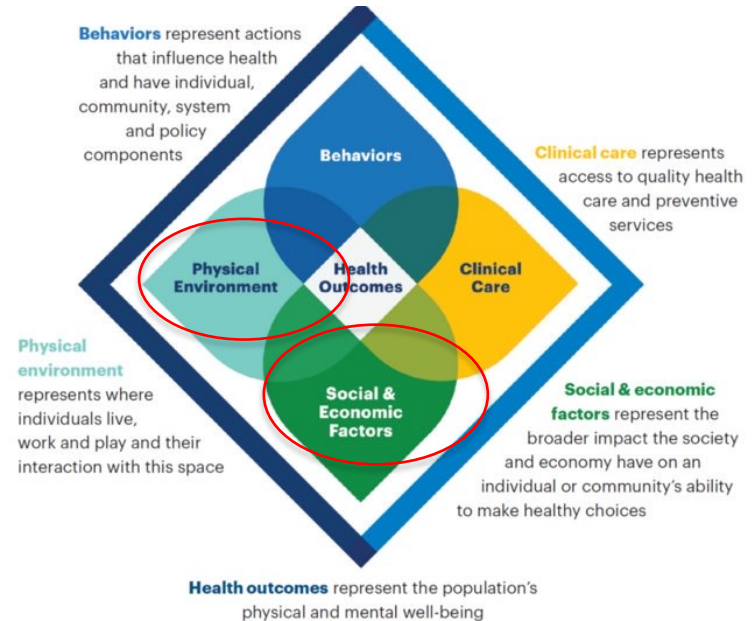


NEW VS. OLD MODEL

Old Model - Before 2020



New Model - 2020



Source: America's Health Rankings

REPORTS

- 2020 Health of Women and Children Report (first published in 2016)
- 2020 Senior Report (first published in 2013)
- 2020 Health of Those Who Have Served
- Annual Report

ANNUAL REPORT



74 TOTAL MEASURES
(59 RANKED MEASURES)



20 DATA SOURCES

2020 ANNUAL REPORT

9 measures

Behaviors represent actions that influence health and have individual, community, system and policy components

15 measures

Clinical care represents access to quality health care and preventive services

12 measures

10 measures

Physical environment represents where individuals live, work and play and their interaction with this space

Behaviors

Health Outcomes

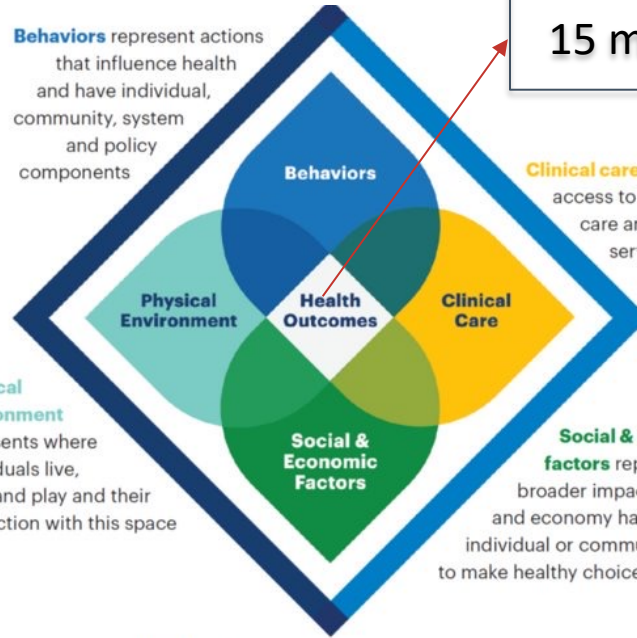
Clinical Care

Social & Economic Factors

Social & economic factors represent the broader impact the society and economy have on an individual or community's ability to make healthy choices

13 measures

Health outcomes represent the population's physical and mental well-being



EXAMPLES OF MEASURES

Insufficient sleep
E-cigarette use

Behaviors represent actions that influence health and have individual, community, system and policy components

Drug deaths
Excessive drinking

Clinical care represents access to quality health care and preventive services

Avoided care due to cost
Mental health providers

Climate change policies
Crowded housing

Physical environment represents where individuals live, work and play and their interaction with this space

Health Outcomes

Social & Economic Factors

Social & economic factors represent the broader impact the society and economy have on an individual or community's ability to make healthy choices

Voter participation
Food insecurity

Health outcomes represent the population's physical and mental well-being

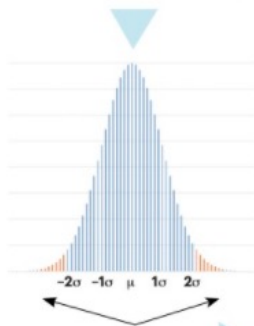


METHODOLOGY

Behaviors
Social & Economic Factors
Physical Environment
Clinical Care
Health Outcomes

1. Gather data.

2. Normalize state values for each measure using U.S. value (calculate score).



3. Eliminate outliers.

4. Multiply by weights.

Σ

5. Sum weighted scores.

6. Rank states by sum of all measure scores.

WEIGHTS

CATEGORY WEIGHTS FOR ANNUAL REPORT MODEL	
Category	Weight
Social & Economic Factors	0.30
Physical Environment	0.10
Clinical Care	0.15
Behaviors	0.20
Health Outcomes	0.25

WEIGHTS

ANNUAL REPORT MEASURES, WEIGHTS AND CORRELATION WITH HEALTH		
Measure Name	Weight	Positive Effect
Occupational Fatalities	0.015	N
Public Health Funding	0.015	Y
Violent Crime	0.025	N
Economic Hardship Index	0.036	N
Food Insecurity	0.025	N
Income Inequality	0.025	N
High School Graduation	0.025	Y
High School Graduation Racial Gap	0.025	N
Adverse Childhood Experiences	0.036	N
High-Speed Internet	0.015	Y
Residential Segregation	0.025	N

Kansas

State Health Department Website: kdsheks.gov

Summary

Strengths:

- Low income inequality
- Low prevalence of severe housing problems
- Low prevalence of low birthweight

Challenges:

- High prevalence of household food insecurity
- Low prevalence of exercise
- High prevalence of obesity

Highlights:

OCCUPATIONAL FATALITIES

▼ **52%** between 1988-1990 and 2016-2018 from 11.5 to 5.5 deaths per 100,000 workers

HIGH-SPEED INTERNET

▲ **9%** between 2015 and 2018 from 81.4% to 88.4% of households

HPV IMMUNIZATION

▲ **44%** between 2017 and 2019 from 34.4% to 49.5% of adolescents ages 13-17

CHLAMYDIA

▲ **66%** between 2007 and 2018 from 294.7 to 488.5 cases per 100,000 population

FREQUENT PHYSICAL DISTRESS

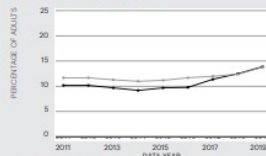
▲ **16%** between 2015 and 2019 from 10.0% to 11.6% of adults

SUICIDE

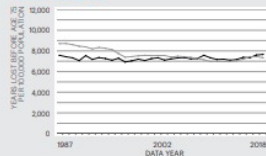
▲ **41%** between 2009 and 2018 from 13.8 to 19.5 deaths per 100,000 population

Trends

FREQUENT MENTAL DISTRESS



PREMATURE DEATH



State — Nation —
For source details and methodology visit www.AmericasHealthRankings.org.

Economic Hardship Index

The economic hardship index compares financial strain between states. It combines six population-level social and economic measures to provide a more complete picture of the difficulties faced by communities than a single measure could provide.

Measure	State Value
Crowded Housing (units with more than one person/room)	1.9%
Dependency (ages 0-17 or ages 65+)	40.4%
Education (ages 25+ without a high school diploma)	8.2%
Per Capita Income	\$32,885
Poverty (households below the poverty level)	11.6%
Unemployment (ages 16-64)	3.9%

Multiple Chronic Conditions

Chronic conditions are medical conditions that last more than a year, require ongoing medical attention and/or limit activities of daily living. Adults with multiple chronic conditions represent one of the highest-need segments of the population.

Measure	State Value
Arthritis	25.6%
Asthma	9.9%
Cancer (excluding skin)	7.6%
Cardiovascular Disease	8.2%
Chronic Kidney Disease	2.7%
Chronic Obstructive Pulmonary Disease	6.4%
Depression	19.9%
Diabetes	10.8%

Measure

Rating

2020 Value

2020 Rank

Social & Economic Factors *

+++

0.168

21

All Social and Economic Measures

Community and Family Safety - Annual *
Sum of weighted z-scores

++

-0.415

37

Occupational Fatalities
Deaths per 100,000 workers

++

5.5

34

Public Health Funding
Dollars per person

++

\$64

40

Violent Crime
Offenses per 100,000 population

++

411

34

Economic Resources - Annual *
Sum of weighted z-scores

+++

0.264

26

Economic Hardship Index
Index from 1-100

+++

43

22

RATING RANK

+++++ 1 - 10

++++ 11 - 20

+++ 21 - 30

++ 31 - 40

+ 41 - 50

KANSAS: 2020 RANKING



In 2020 - no state ranking due to Covid-19

Source: America's Health Rankings

4.

COUNTY HEALTH RANKINGS AND ROADMAPS

County Health
Rankings & Roadmaps

Building a Culture of Health, County by County

A Robert Wood Johnson Foundation program



Gaffney, NC
Current
74°F

Search your notes and links manually or
L.C. management team at info@lcc.com

THE GAFFNEY LEDGER

A newspaper in all that the word implies, devoted to the best interests of the people of Cherokee County.

Thursday, April 8, 2021

National and World News
State News
Event Calendar
Poll Question

Front Page
Local News
Sports
Lifestyles
Local Links
Classifieds
Announcement Forms

redplum
CHECK THE GAFFNEY LEDGER
EVERY FRIDAY FOR
MONEY SAVING COUPONS!

Cherokee County moves up seven spots in health rankings

By *Joan Miller* on April 07, 2021
By SCOTT POWELL
Lodge data: Walter
spowell@gaffneyledger.com

Cherokee County steadily made improvements over the past decade in county health rankings, ranked 39th on overall health outcomes for local residents in 2012, Cherokee County ranked 32nd in 2013, 29th in 2014, 26th in 2015, 23rd in 2016, 20th in 2017, 17th in 2018, 14th in 2019, and 11th in 2020. Cherokee County's health ranking is the highest it has ever achieved.

Cherokee County's health ranking is the highest it has ever achieved. Cherokee County's health ranking is the highest it has ever achieved. Cherokee County's health ranking is the highest it has ever achieved.

WFXR
LOCAL NEWS
NEWS
WEATHER
SPORTS
LIVING LOCAL
MINOR SEND OFF PAGE
CONTESTS
ABOUT US

2021 County Health Rankings rates 3 southwest Virginia cities among Virginia's 5 least healthy localities



(Photo: Courtesy MCK Online)

by: [WFXR.com Digital Desk](https://www.wfxr.com/digital-desk)
Posted: Mar 31, 2021 / 01:01 PM EDT / Updated: Mar 31, 2021 / 01:01 PM EDT

RICHMOND, Va. (WFXR) — According to the annual County Health Rankings from the University of

These Are the Sleepers


Yaaaaaawwwwwwwwww.

MESSIMER, SONYA MAYNARD, GINA LOVELESS AND PAUL KITA

MAR 24, 2021



...e Are the Sleepies
...aaaaawwwwwwww.
BY JENNIFER MESSIMER, SONYA MAYNARD, GINA LOVELESS AND PAUL KITA MAR 24, 2021



POOR SLEEP can lead to heightened risks of diabetes, hypertension, and obesity, and if you just fell asleep reading this sentence, well, where you live may be to blame.

100 of the largest U.S. cities and scored each according to the number of hours of sleep and how many of them reported sleeping less than seven

OR SLEEP can lead to heightened risks of heart disease and if you just fell asleep reading this sentence, well, blame.

We analyzed 100 of the largest U.S. cities and scored each according to the bedtimes of its residents and how many of them reported sleeping less than seven hours a night on average.

...up seven

county health rankings, funded by...
...for local residents...
...in 2017. Che...

H

Cherokee County moves up seven

By ohtadmin1 on April 07, 2021

By **SCOTT POWELL**
Ledge Staff Writer
spowell@gaffneyledger.com

Cherokee County steadily
Johnson Foundation. On
Wednesday by the U
in South Carolina.

SCOTT POWELL
Editor Staff Writer
powell@gafnayeledger.com
Cherokee County steadily made improve
Johnson Foundation. Cherokee County
Wednesday by the University of Wisconsin
in South Carolina. Beaufort was L...



LOCAL NEWS

21 County Health Rankings rates 3 southwest Virginia cities among Virginia's 5 least healthy


(Photo: Courtesy MGN Online)

by: WFXRtv.com Digital Desk
Posted: Mar 31, 2011

RICHMOND, Va. (WFXR) — According to the app

RICHMOND, Va. (WFXR) – According to the annual [County Health Rankings](#) from the University of

These Are the Sleepers
Yaaaaaawwwwwwwwww.
MESSIMER, SONYA MAYNARD, GINA LOVELESS AND PAUL KITA
MAR 24, 2021



POOR SLEEP can lead to heightened risks of diabetes, hypertension, and obesity, and if you just fell asleep reading this sentence, well, where you live may be to blame.

100 of the largest U.S. cities and scored each according to the number of hours of sleep and how many of them reported sleeping less than six hours.

OR SLEEP can lead to heightened risks of...
and if you just fell asleep reading this sentence, well, it's
blame.

We analyzed 100 of the largest U.S. cities and scored each according to the
bedtimes of its residents and how many of them reported sleeping less than
hours a night on average.

...up seven...
...country health rankings based on...
...times for local residents...
...in 2012. Ch...

Cherokee County moves up

By **SCOTT POWELL**
Ledgeside Staff Writer
spowell@gaffneyledger.com

Cherokee County steadily made improvement
Johnson Foundation, Cherokee County re
Wednesday by the University of Wiscon
in South Carolina. Beaufort was L...

These Are the Drunkest States in America

Hristina Byrnes
March 18, 2021

March 18, 2021 9:00 am



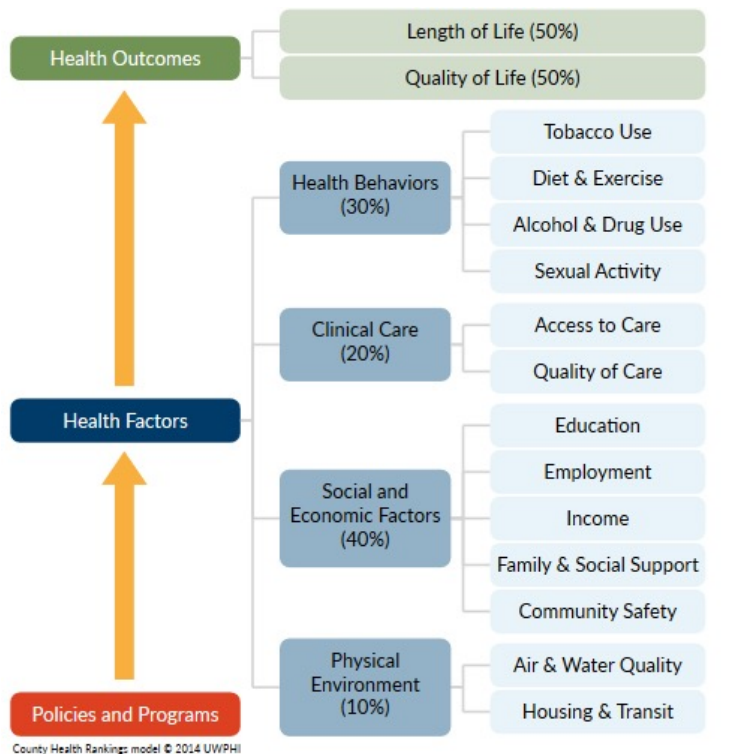
Alcohol is enjoyed responsibly by millions of Americans every day. Nearly 60% of adult men and 51% of adult women drink regularly, according to the 2019 National Survey on Drug Use and Health, an annual survey of more than 67,000 U.S. residents. Many people, however, also report heavy use of alcohol. About 10% of people in the U.S. report regularly consuming large amounts of alcohol, and about 1% report excessive drinking.

Many people, however, also report heavy use of alcohol. Approximately 19.0% of adults in the U.S. report regularly consuming unhealthy amounts of alcohol. In some states, excessive drinking rates are higher.

24/7 Tempo reviewed the adult excessive drinking rate in every state from the [2020 County Health Rankings & Roadmaps](#), a Robert Wood Johnson Foundation and University of Wisconsin Population Health Institute joint program, to identify the states with the lowest and highest shares of people reporting binge or heavy drinking.

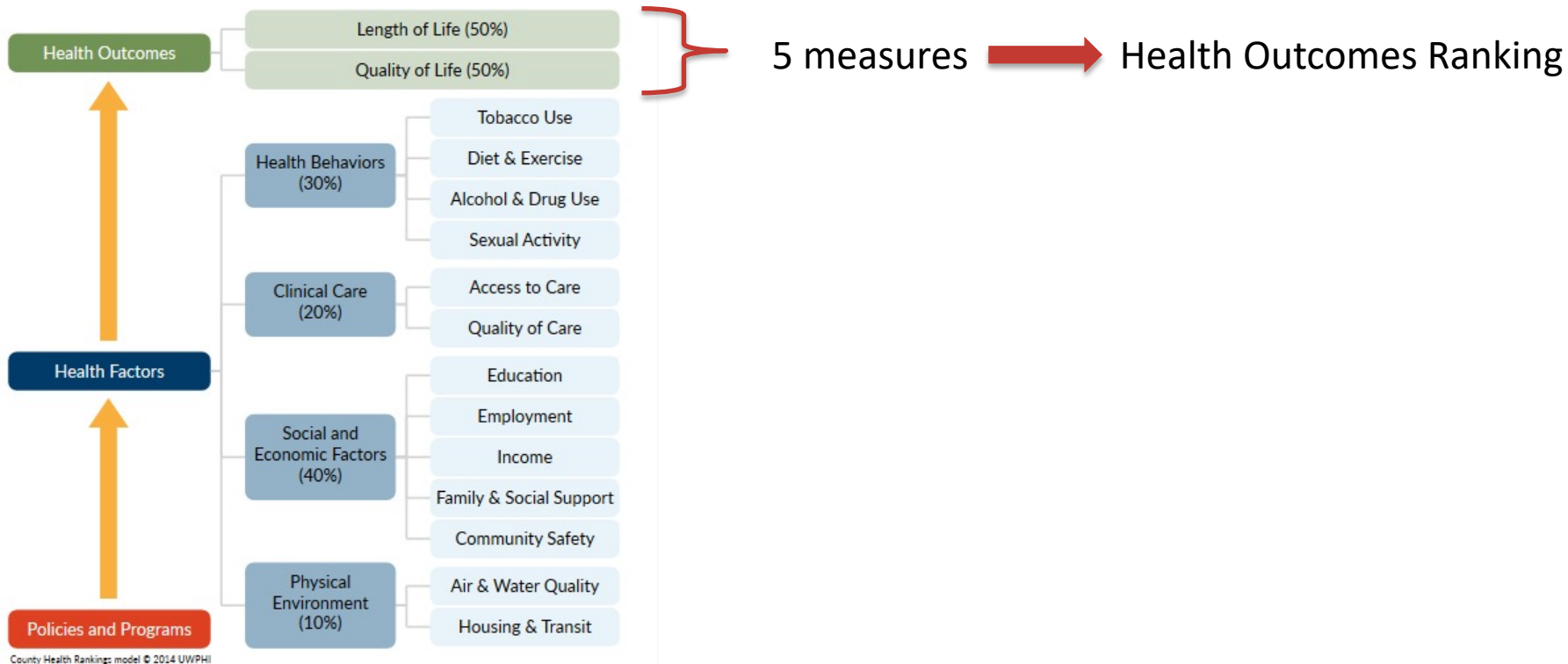
Mar 31, 2021 / 01:01 PM EDT

COUNTY HEALTH RANKINGS MODEL



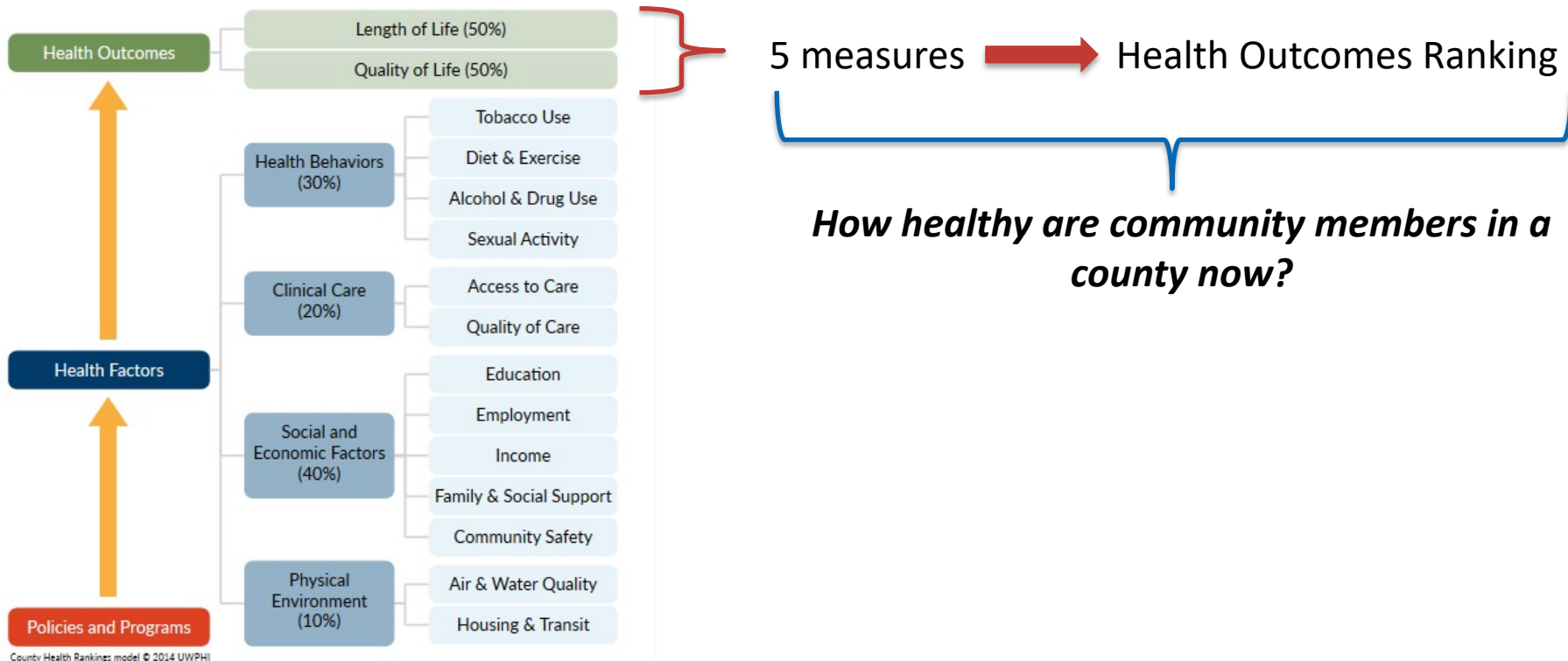
Source: County Health Rankings and Roadmaps, 2021

COUNTY HEALTH RANKINGS MODEL

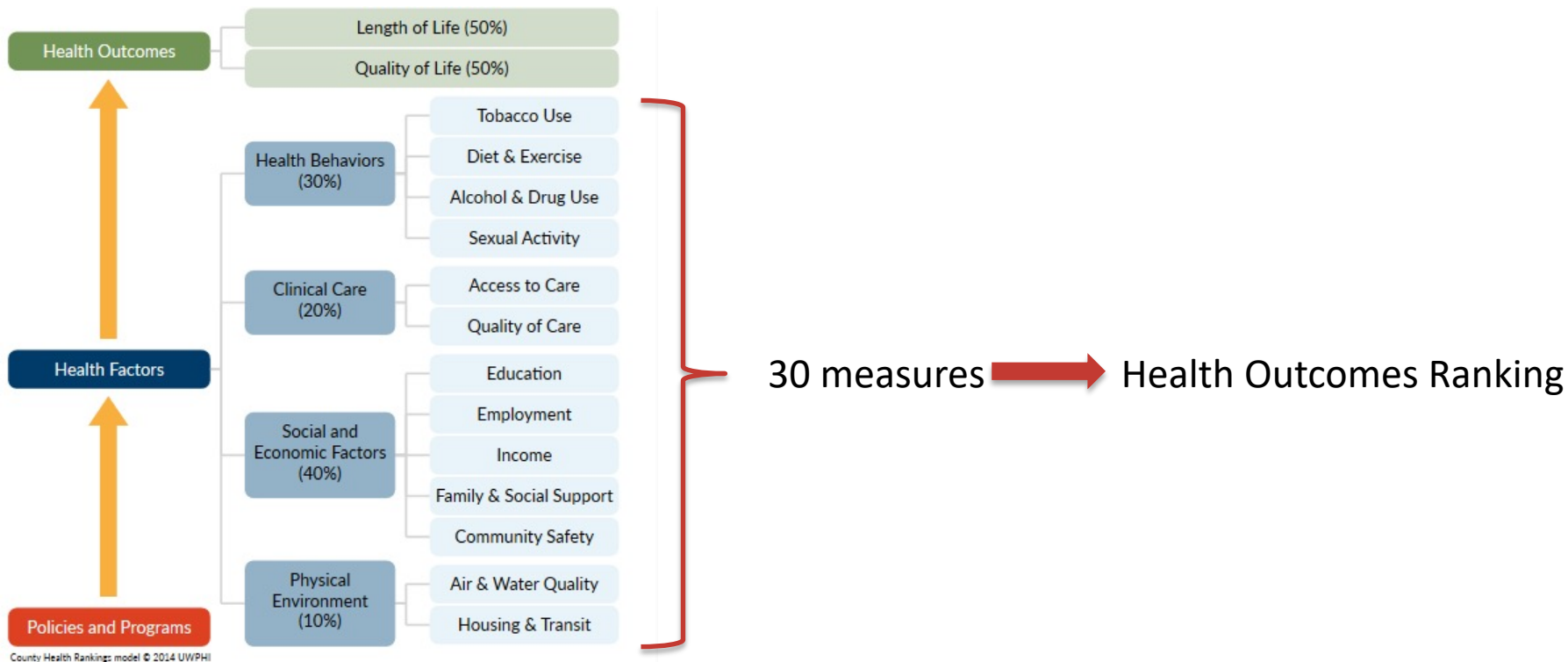


Source: County Health Rankings and Roadmaps, 2021

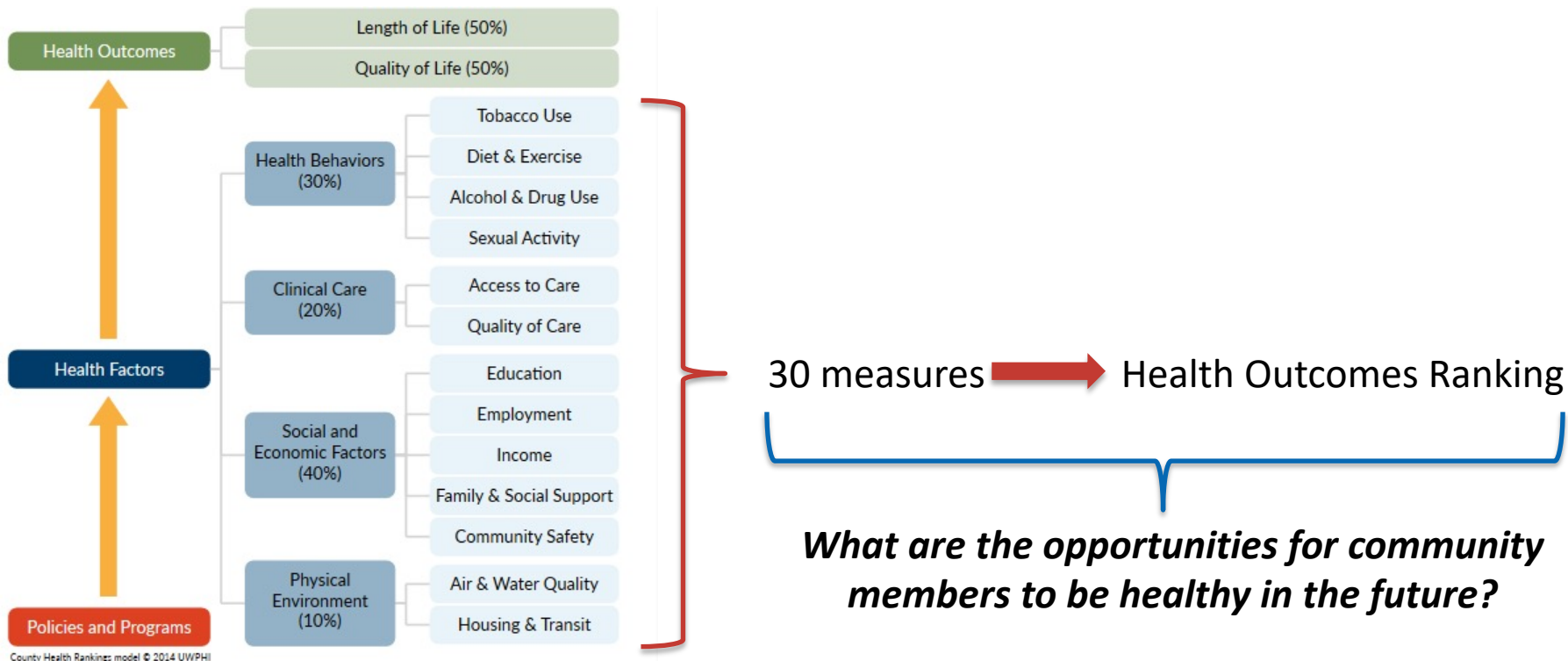
COUNTY HEALTH RANKINGS MODEL



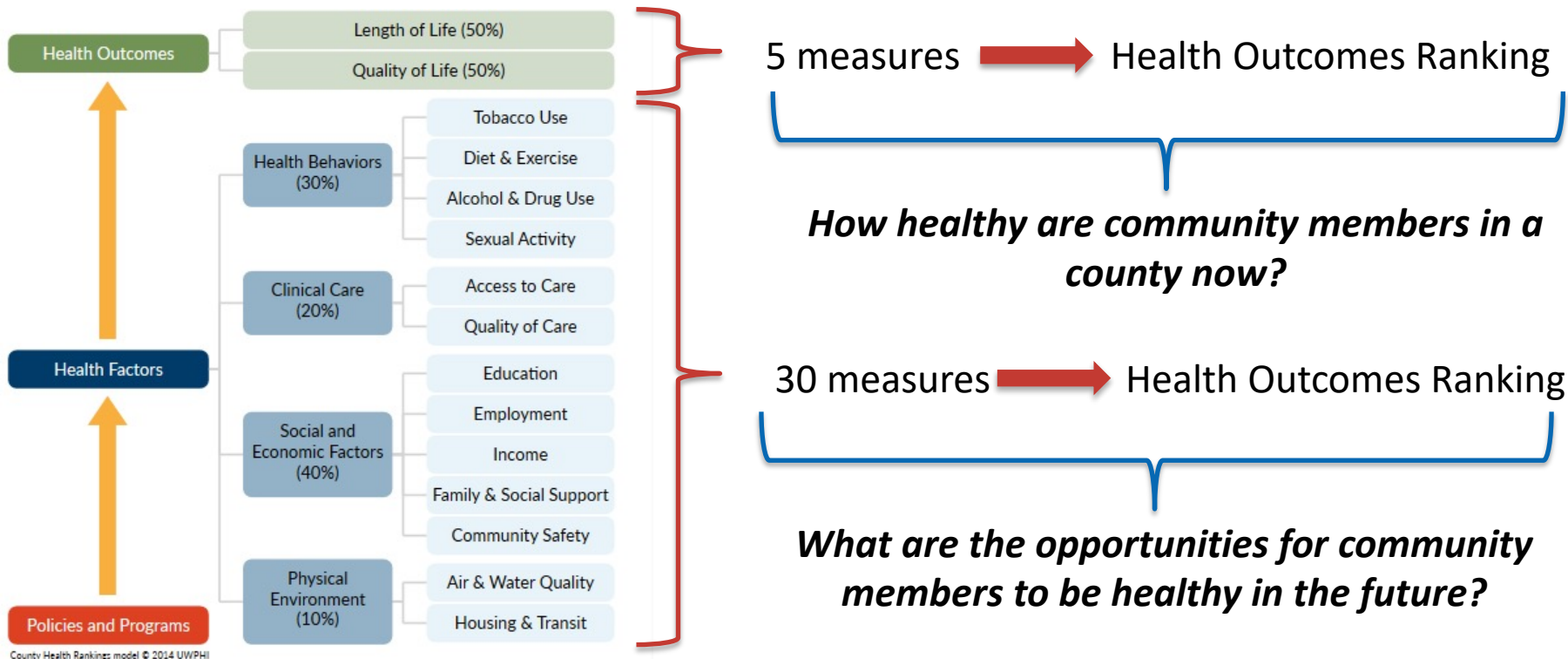
COUNTY HEALTH RANKINGS MODEL



COUNTY HEALTH RANKINGS MODEL



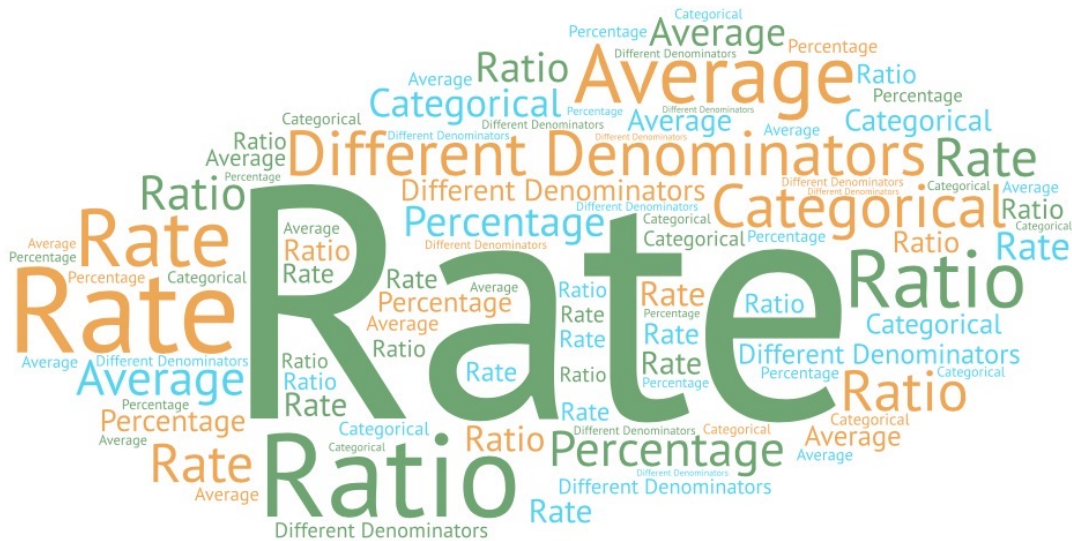
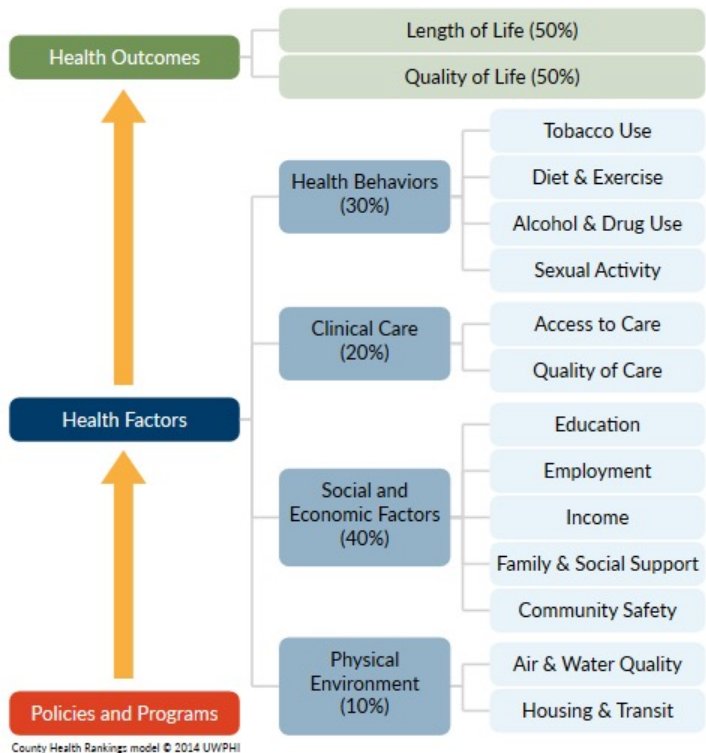
COUNTY HEALTH RANKINGS MODEL



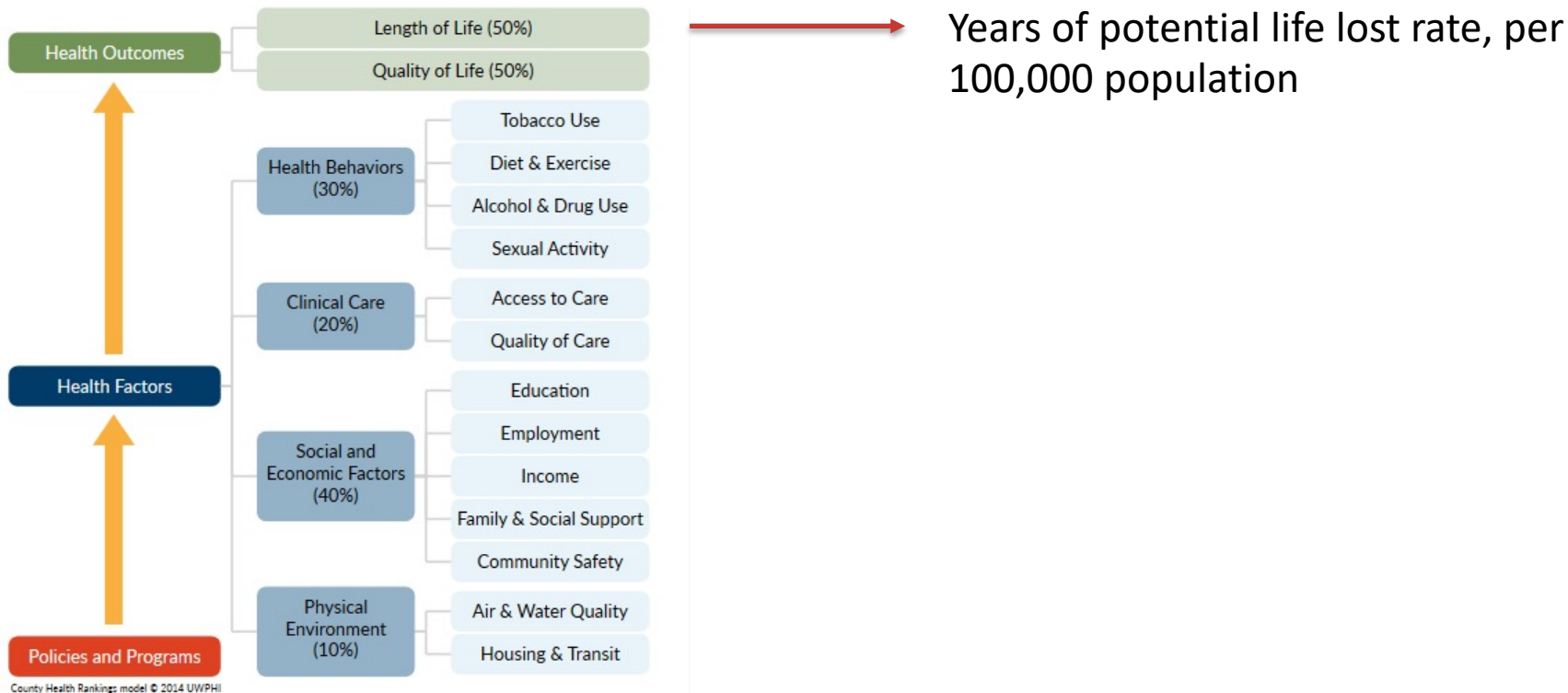
HOW ARE THE RANKS CALCULATED?



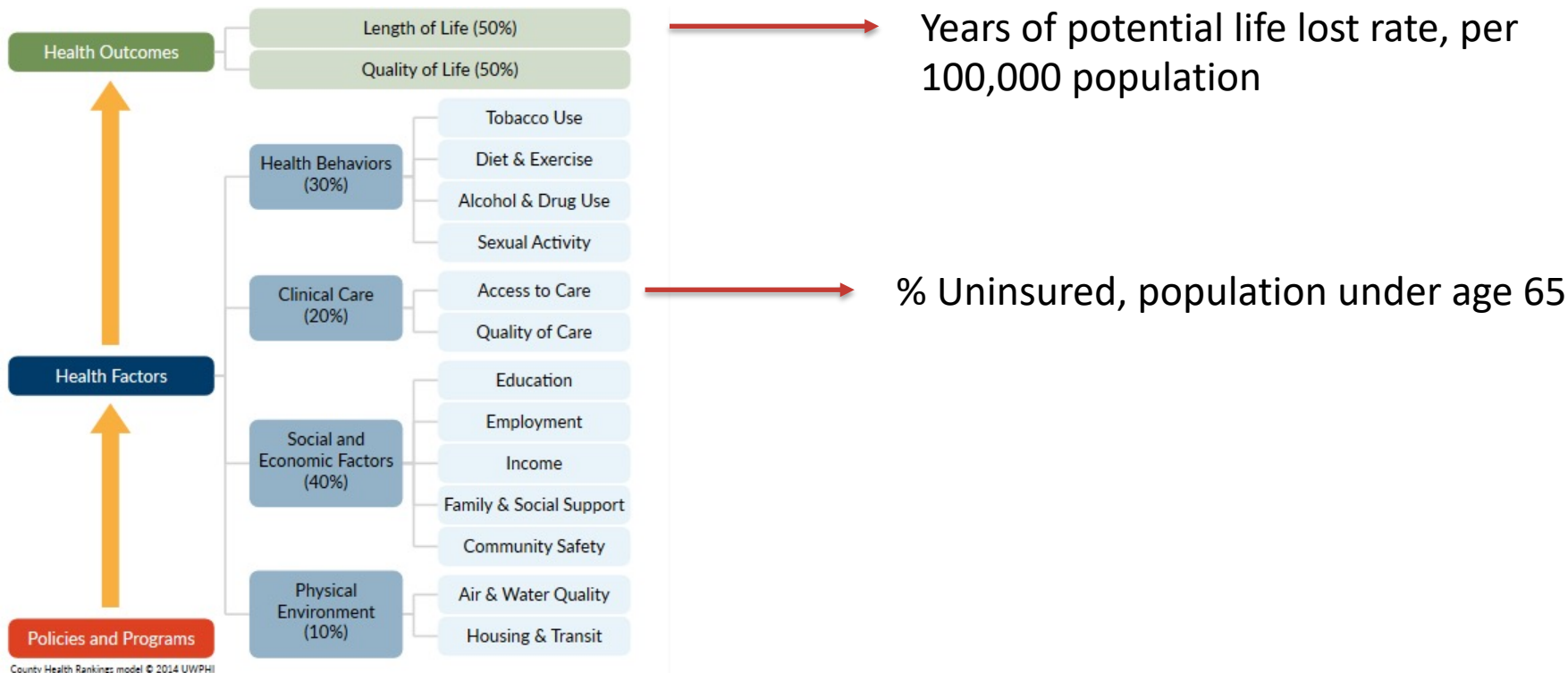
COUNTY HEALTH RANKINGS MODEL



COUNTY HEALTH RANKINGS MODEL

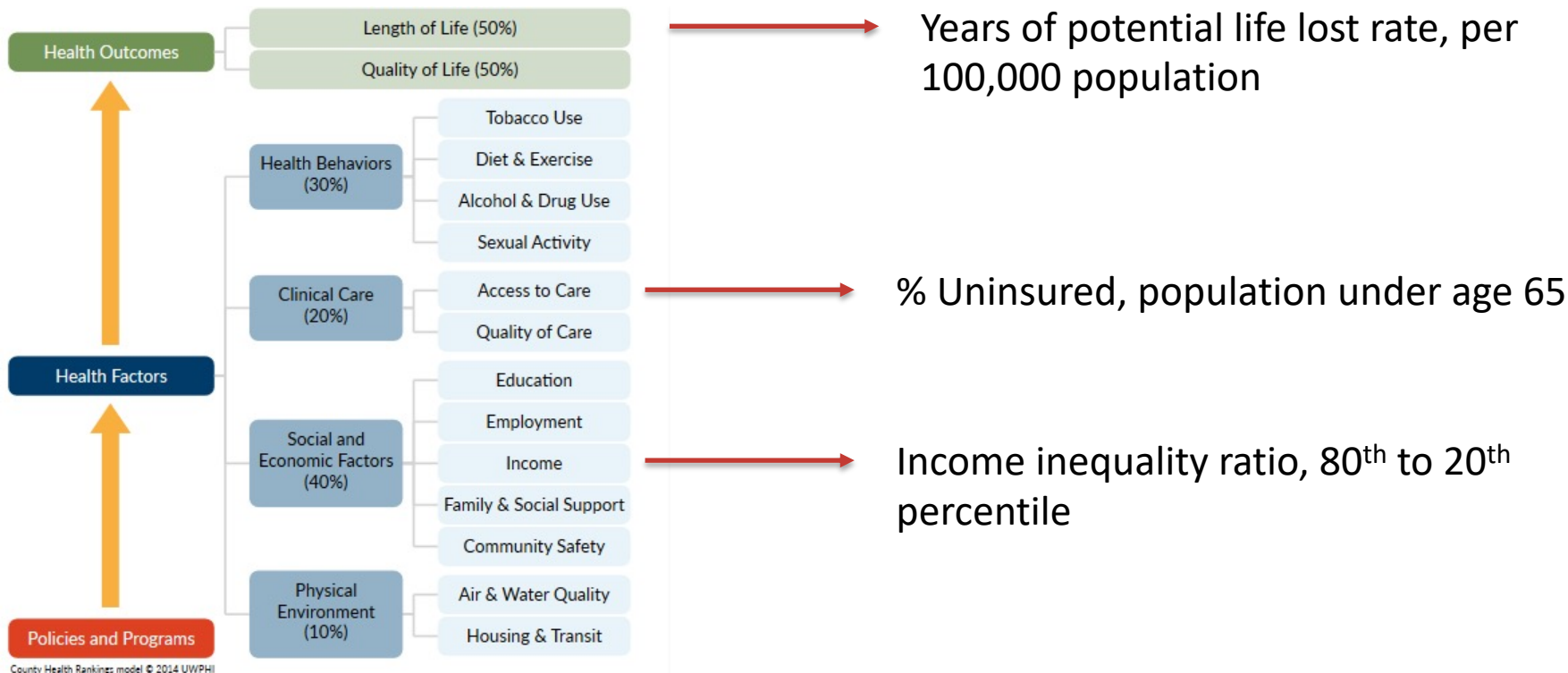


COUNTY HEALTH RANKINGS MODEL



Source: County Health Rankings and Roadmaps, 2021

COUNTY HEALTH RANKINGS MODEL

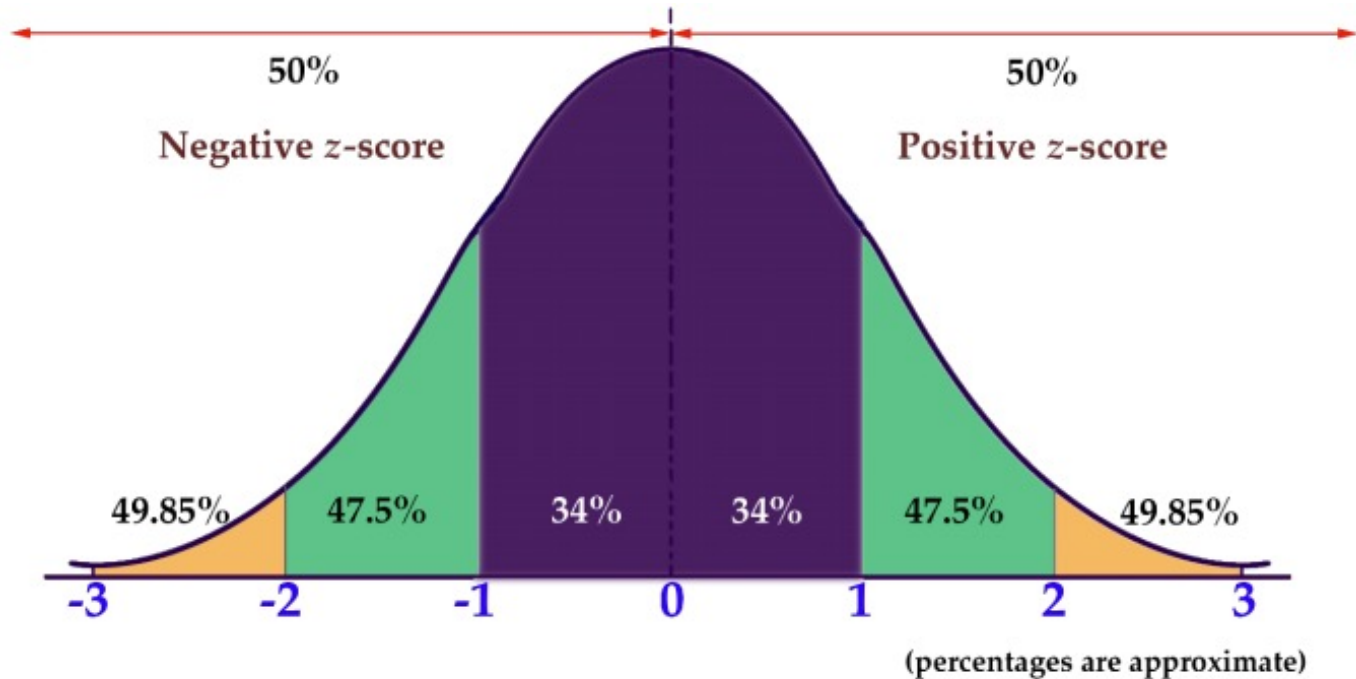


Source: County Health Rankings and Roadmaps, 2021

STEP 1: STANDARDIZING MEASURES

$$Z = \frac{(\textit{County Value}) - (\textit{Average of Counties in State})}{(\textit{Standard Deviation of Counties in State})}$$

STEP 1: STANDARDIZING MEASURES



POP QUIZ!...TRUE OR FALSE?

The higher the Z-score, the better—or healthier—a county is.

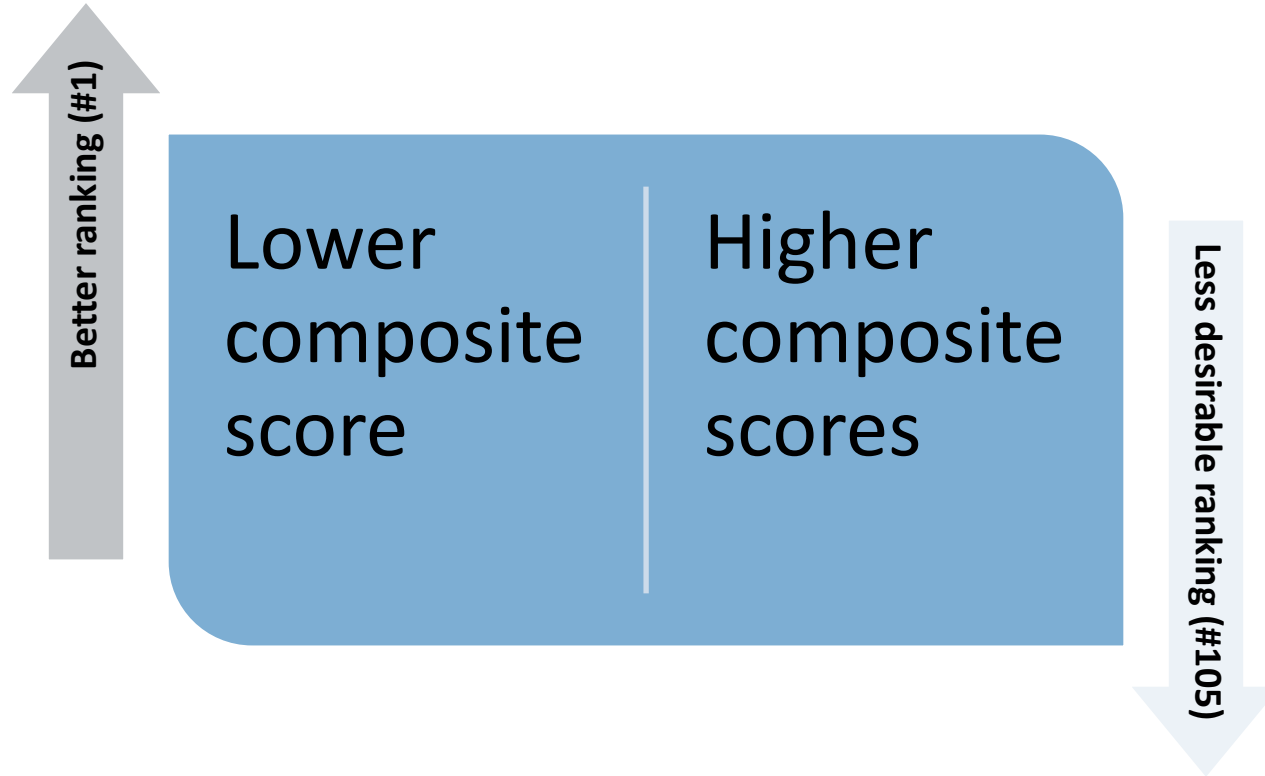
STEP 2: REVERSE CODING

- Food environment index
- Access to exercise opportunities
- Flu Vaccinations
- Mammography screening
- High school completion
- Some college (post-secondary education)
- Social associations

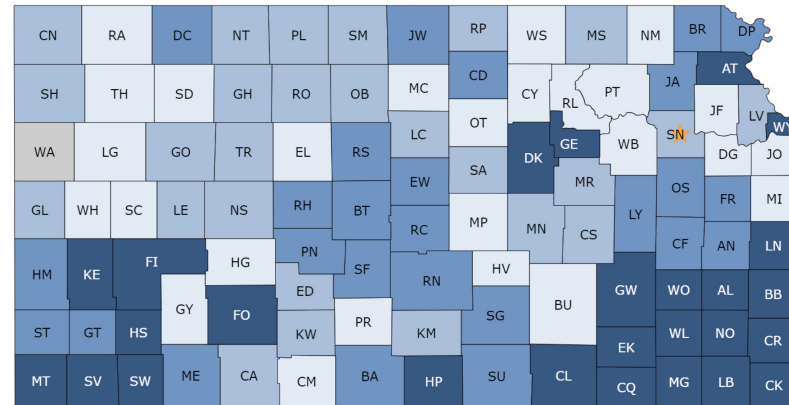
STEP 3: COMPOSITE SCORES

$$\textit{Composite score} = \sum w_i Z_i$$

STEP 4: RANKING



2021 Health Factors - Kansas



Health Factor Ranks

“

*Go beyond the
snapshot.*

PANELISTS



Brian McKiernan
Commissioner for the
Unified Government of Wyandotte County/Kansas City,
Kansas, District 2



Mary C. Jones, LCMFT, LCAC
President and CEO
Mental Health Association of South Central Kansas

“

"Rather than providing the final answers, the Rankings serve as a 'call to action' to collect better local data and engage community partners in collective action."

(2015 editorial by Remington in Health Services Research)



KANSAS HEALTH INSTITUTE

Informing Policy. Improving Health.



THANK YOU

Any questions?

You can connect with us at:

hshah@khi.org, tlin@khi.org, chunt@khi.org



212 SW 8th Avenue | Suite 300
Topeka, Kansas | 66603-3936



785.233.5443



khi.org



/KHIorg



@KHIorg



KANSAS HEALTH INSTITUTE

Informing Policy. Improving Health.