



# When "Don't Spit on the Sidewalk" is Not Enough: Public Health and the COVID-19 Response

February 18, 2021



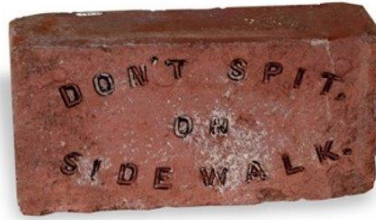
# WHO WE ARE

- Nonprofit, nonpartisan educational organization based in Topeka.
- Established in 1995 with a multi-year grant by the Kansas Health Foundation and located directly across from Kansas Statehouse in downtown Topeka.
- Committed to convening meaningful conversations around tough topics related to health.



KANSAS HEALTH INSTITUTE

*Informing Policy. Improving Health.*



# When "Don't Spit on the Sidewalk" is Not Enough: Public Health and the COVID-19 Response

**D. CHARLES HUNT, SENIOR ANALYST**

*Kansas Health Institute*

---

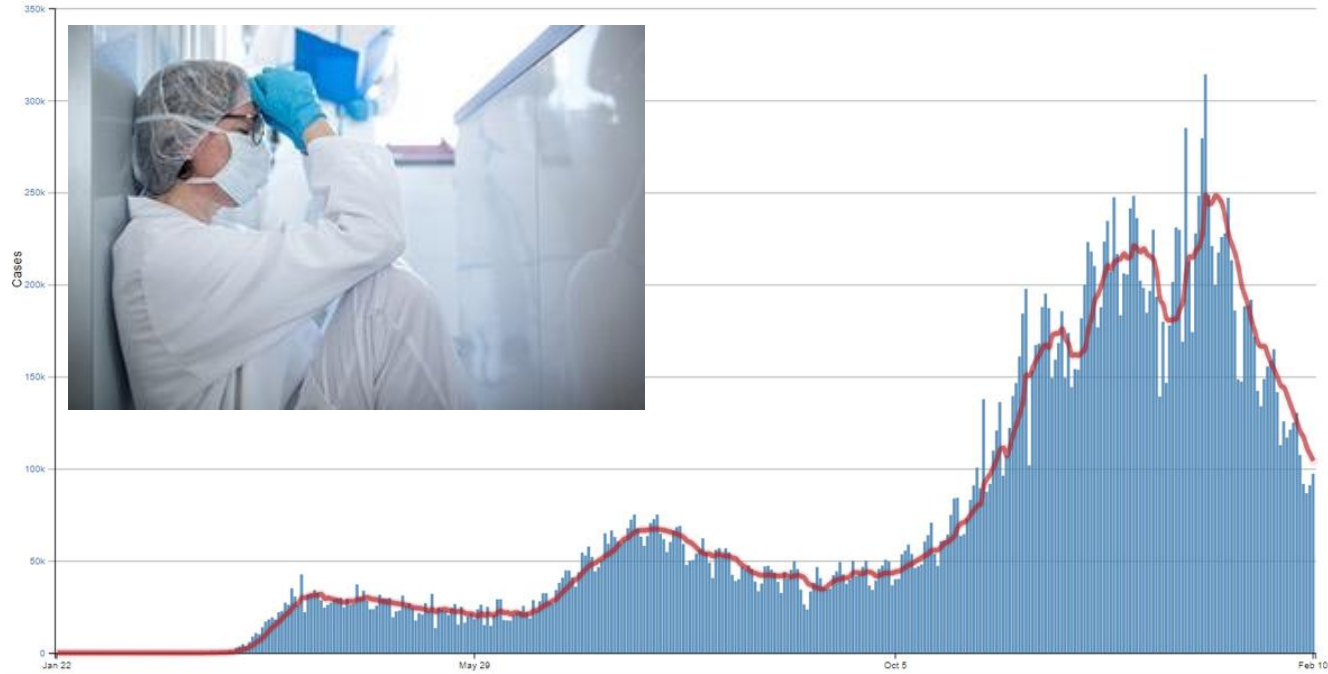
“

*One can think of the middle of the twentieth century as the end of one of the most important social revolutions in history, the virtual elimination of the infectious diseases as a significant factor in social life.*

-Nobel Laureate Sir Frank Macfarlane Burnet  
*Natural History of Infectious Disease (1962)*

---

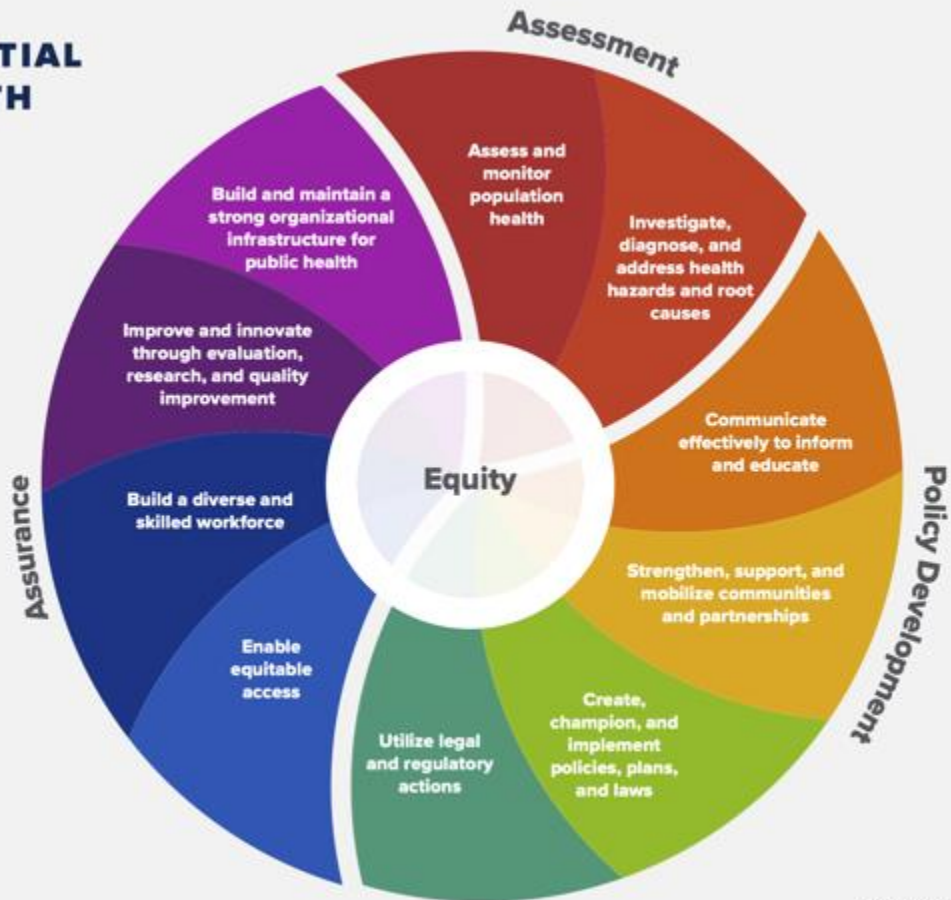
# DAILY TRENDS IN NUMBER OF COVID-19 CASES, U.S., 2020-2021



# THE 10 ESSENTIAL PUBLIC HEALTH SERVICES

*To protect and promote the health of all people in all communities*

The 10 Essential Public Health Services provide a framework for public health to protect and promote the health of all people in all communities. To achieve optimal health for all, the Essential Public Health Services actively promote policies, systems, and services that enable good health and seek to remove obstacles and systemic and structural barriers, such as poverty, racism, gender discrimination, and other forms of oppression, that have resulted in health inequities. Everyone should have a fair and just opportunity to achieve good health and well-being.



Created 2020

# RESPONSE COMPONENTS



Laboratory  
Testing



Case  
Investigation  
and Contact  
Tracing



Policy



Data and  
Information



Education

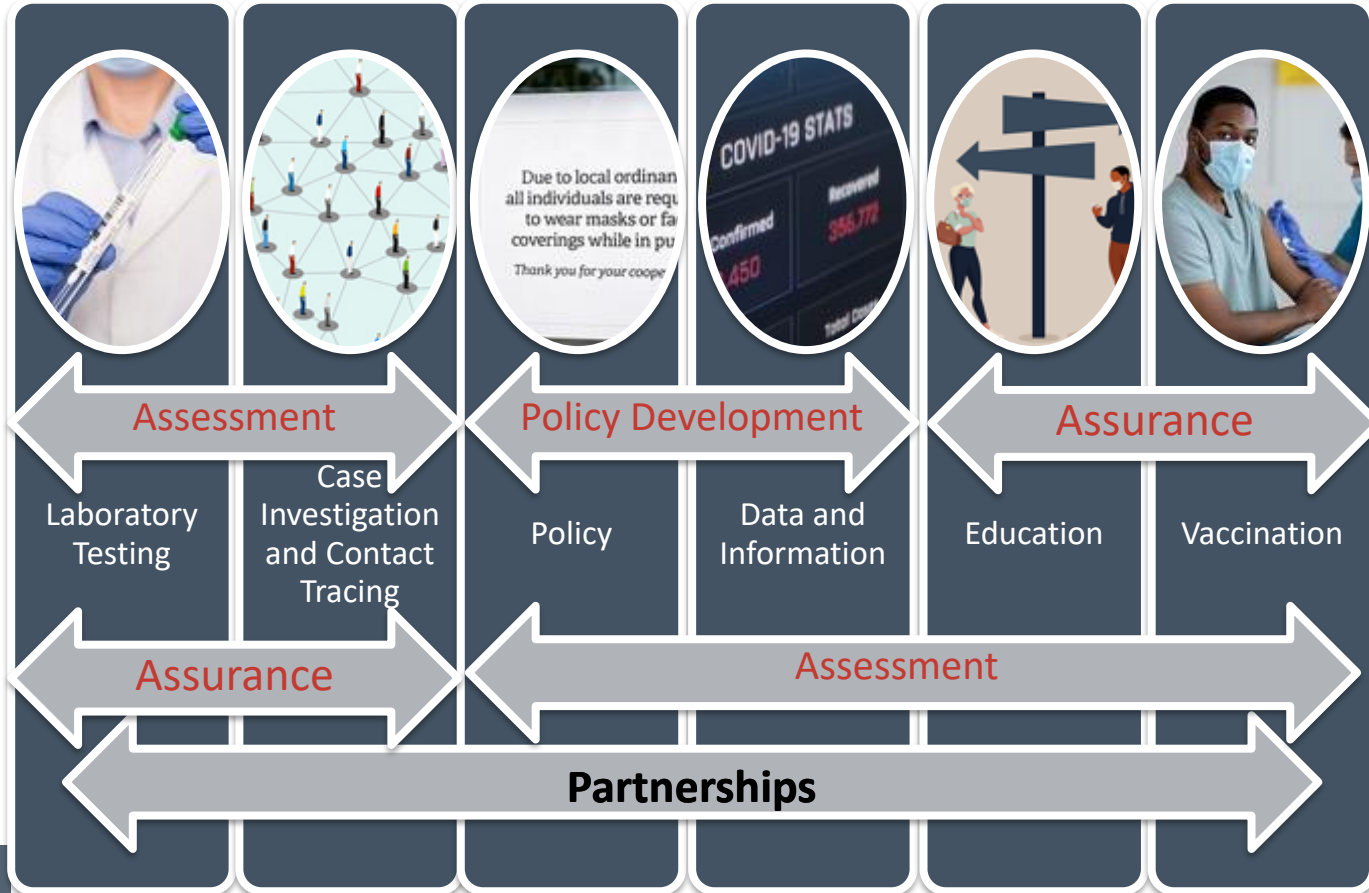


Vaccination



**Partnerships**

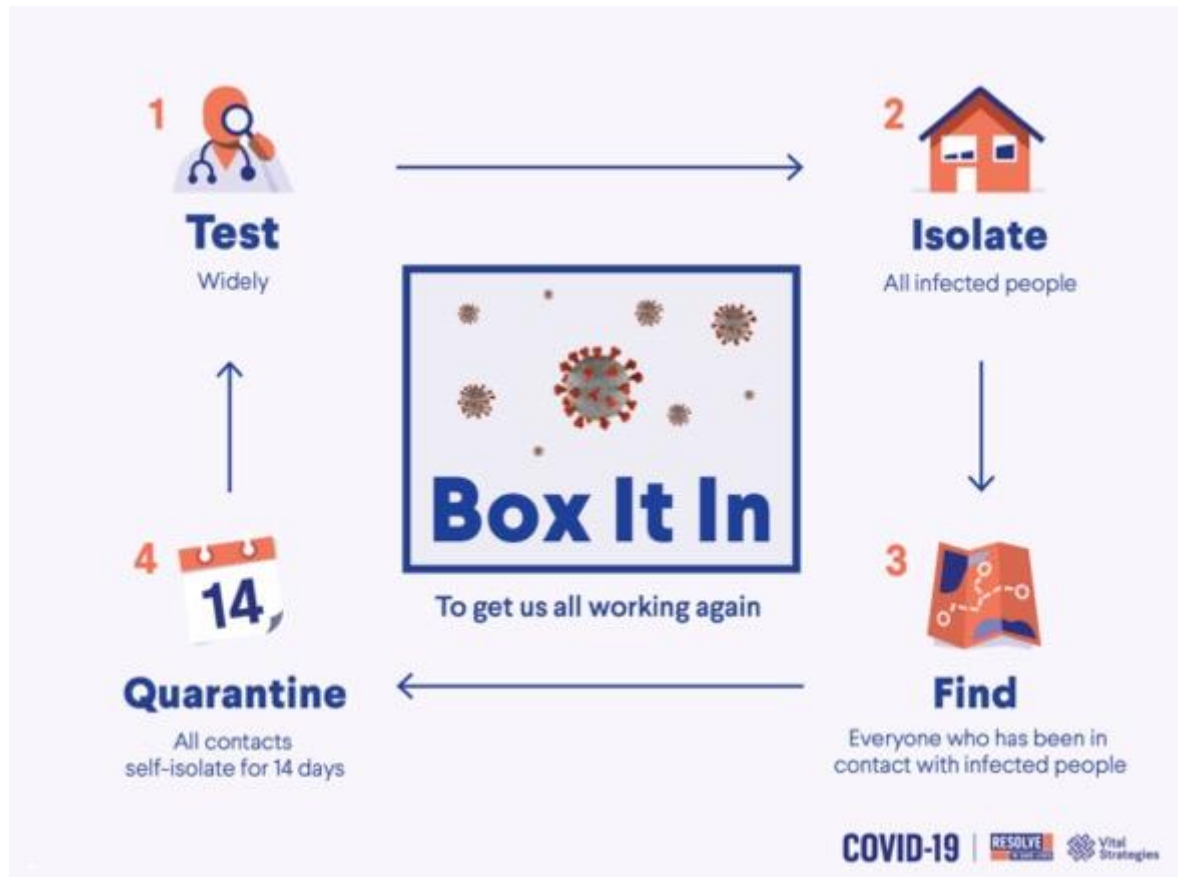
# RESPONSE COMPONENTS







# **LABORATORY TESTING, CASE INVESTIGATION AND CONTACT TRACING**

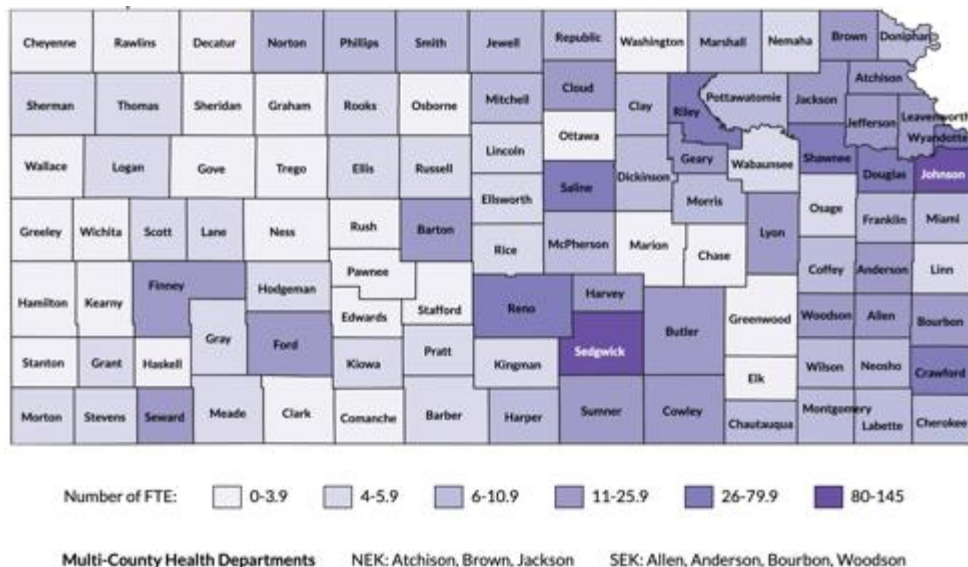


Source: *Resolve to Save Lives* (2020).

# PRE-PANDEMIC PUBLIC HEALTH INFRASTRUCTURE CHALLENGES

- Workforce
- Administrative
- Technical / information systems
- Increased lab testing = more investigations

Kansas Local Public Health Workforce: FTE



Source: Kansas Public Health Collaborative (Wichita State University) analysis of KDHE Aid-to-Local Survey, FY2021.



**DISCUSSION:**

**TESTING, CASE  
INVESTIGATION AND  
CONTACT TRACING**



# **POPULATION-BASED MITIGATION POLICIES**



1. Wear a mask

3. Social distance



2. Wash your hands

4. Avoid large groups







**DISCUSSION:**

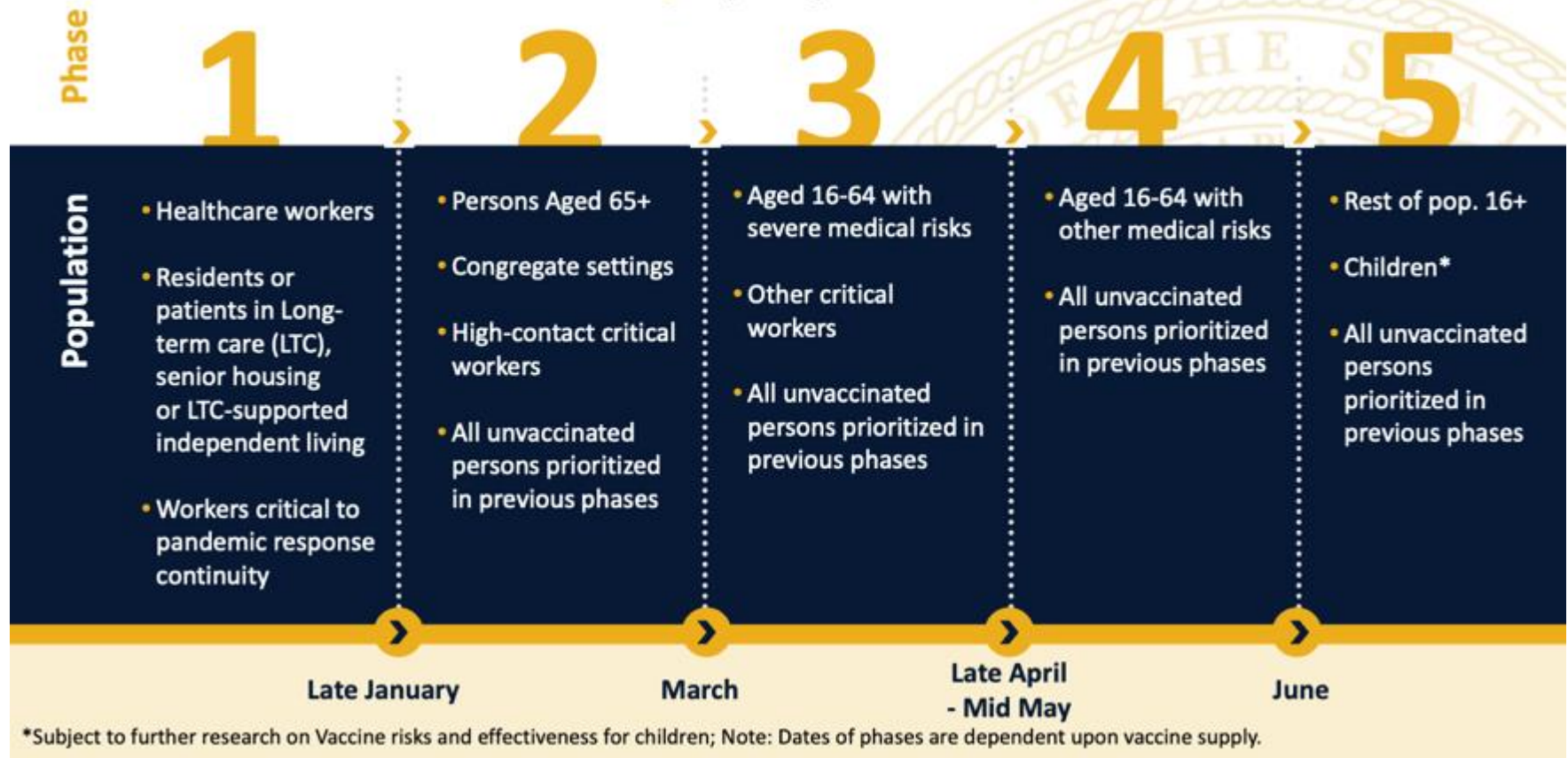
**POPULATION-BASED  
MITIGATION STRATEGIES**





# VACCINATION

# Kansas Vaccination Phases | By Population



\*Subject to further research on Vaccine risks and effectiveness for children; Note: Dates of phases are dependent upon vaccine supply.

# Kansas COVID-19 Vaccination Overview



**303,677**

People Vaccinated



**418,653**

Total Doses Reported as Administered

First Dose: 303,677

Second Dose: 114,976



**581,975**

Total Doses Distributed

State Distributed: 466,975

Federal Pharmacy Program: 115,000

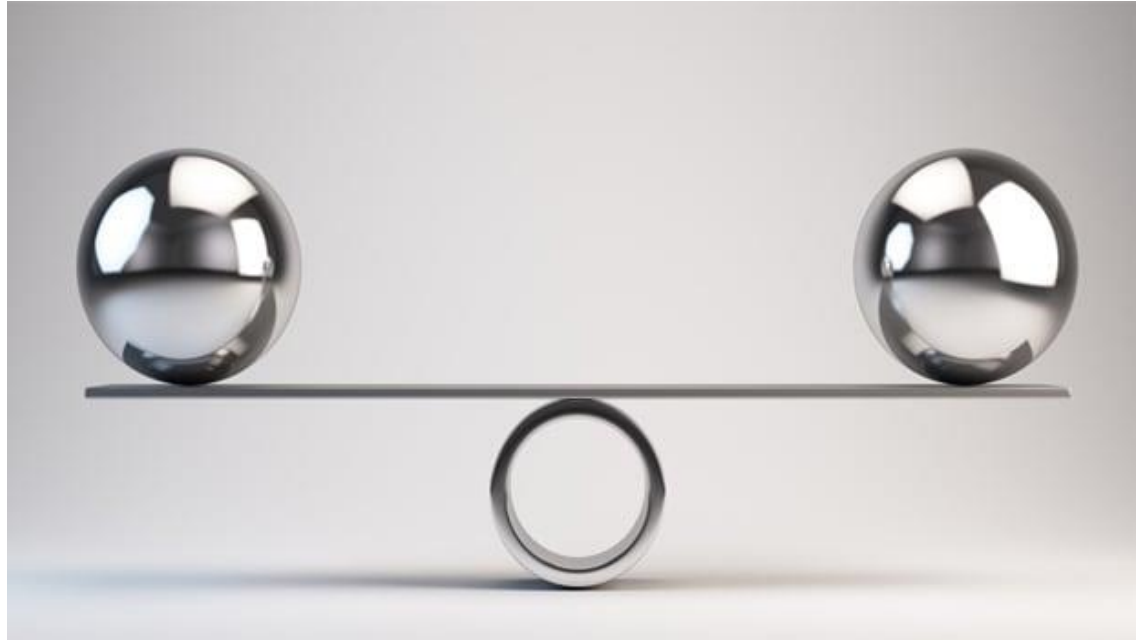


**10.4%**

Percent of Kansans Vaccinated with One Dose

*Source: Kansas Department of Health and Environment (February 17, 2021)*

# PUBLIC HEALTH CAPACITY: CASE INVESTIGATIONS / CONTACT TRACING VS. VACCINATION?





# **DISCUSSION:** **VACCINATION**



KANSAS HEALTH INSTITUTE

*Informing Policy. Improving Health.*

**THANK YOU**  
**Any questions?**

You can connect with me at: [chunt@khi.org](mailto:chunt@khi.org).



## **A Shot at Vaccine Policy**

**February 23, 2021**



# CONNECT WITH US!



[khi.org](http://khi.org)



[/KHlorg](https://www.facebook.com/KHlorg)



[@KHlorg](https://twitter.com/KHlorg)

