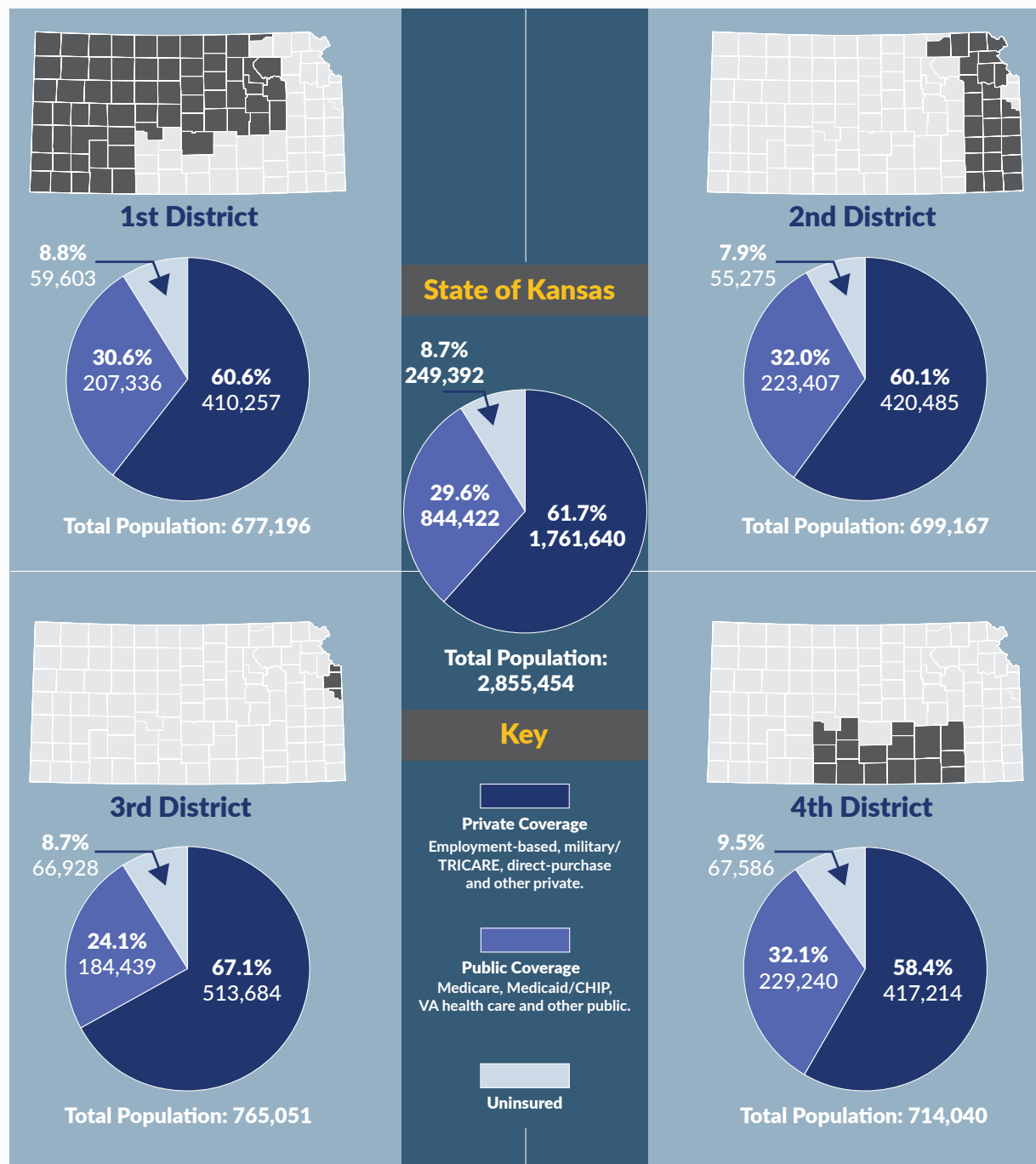




INSURANCE COVERAGE BY KANSAS CONGRESSIONAL DISTRICT

This fact sheet details health insurance coverage for Kansans in 2017 by congressional district (Figure 1) as well as by age group (Figure 2, page 2). Data are from the U.S. Census Bureau 2017 1-year American Community Survey.

Figure 1. Health Insurance Coverage for Kansas Overall and by Congressional District, 2017



Note: Percentages may not sum to 100 percent due to rounding.

Source: KHI analysis of data from the U.S. Census Bureau 2017 1-year American Community Survey table B27010.

Figure 2. Health Insurance Coverage by Age for Kansas Overall and by Congressional District, 2017

2017	Total Population	Private Coverage		Public Coverage		Uninsured	
		Number	Percentage	Number	Percentage	Number	Percentage
Kansas Overall	2,855,454	1,761,640	61.7%	844,422	29.6%	249,392	8.7%
Children, Age 0-18	755,441	476,565	63.1%	239,400	31.7%	39,476	5.2%
Adults, Age 19-64	1,671,821	1,275,321	76.3%	187,873	11.2%	208,627	12.5%
Adults, Age 65+	428,192	9,754	2.3%	417,149	97.4%	1,289	0.3%
1st District	677,196	410,257	60.6%	207,336	30.6%	59,603	8.8%
Children, Age 0-18	179,172	107,481	60.0%	64,008	35.7%	7,683	4.3%
Adults, Age 19-64	390,930	299,301	76.6%	39,998	10.2%	51,631	13.2%
Adults, Age 65+	107,094	3,475	3.2%	103,330	96.5%	289	0.3%
2nd District	699,167	420,485	60.1%	223,407	32.0%	55,275	7.9%
Children, Age 0-18	173,817	110,839	63.8%	51,935	29.9%	11,043	6.4%
Adults, Age 19-64	410,737	307,663	74.9%	59,185	14.4%	43,889	10.7%
Adults, Age 65+	114,613	1,983	1.7%	112,287	98.0%	343	0.3%
3rd District	765,051	513,684	67.1%	184,439	24.1%	66,928	8.7%
Children, Age 0-18	205,972	140,648	68.3%	54,020	26.2%	11,304	5.5%
Adults, Age 19-64	458,722	370,494	80.8%	33,018	7.2%	55,210	12.0%
Adults, Age 65+	100,357	2,542	2.5%	97,401	97.1%	414	0.4%
4th District	714,040	417,214	58.4%	229,240	32.1%	67,586	9.5%
Children, Age 0-18	196,480	117,597	59.9%	69,437	35.3%	9,446	4.8%
Adults, Age 19-64	411,432	297,863	72.4%	55,672	13.5%	57,897	14.1%
Adults, Age 65+	106,128	1,754	1.7%	104,131	98.1%	243	0.2%

Note: Percentages may not sum to 100 percent due to rounding.

Source: KHI analysis of data from the U.S. Census Bureau 2017 1-year American Community Survey table B27010.

ABOUT THE FACT SHEET


This fact sheet is based on work done by Wen-Chieh Lin, Ph.D., Hina B. Shah, M.P.H., and Madison Hoover, M.S. It is available online at khi.org/policy/article/18-26.

KANSAS HEALTH INSTITUTE

The Kansas Health Institute supports effective policymaking through nonpartisan research, education and engagement. KHI believes evidence-based information, objective analysis and civil dialogue enable policy leaders to be champions for a healthier Kansas. Established in 1995 with a multiyear grant from the Kansas Health Foundation, KHI is a nonprofit, nonpartisan educational organization based in Topeka.

Copyright© Kansas Health Institute 2018. Materials may be reprinted with written permission. Reference publication number KHI/18-26.

 212 SW 8th Avenue | Suite 300
Topeka, Kansas | 66603-3936

 785.233.5443

 khi.org

 /KHIorg

 @KHIorg

 khi-org