

# Public Health in Kansas



**Public Health**  
Prevent. Promote. Protect.

**KALHD**  
KANSAS ASSOCIATION  
OF LOCAL  
HEALTH DEPARTMENTS

# Overview

- ▶ 1. Governance
- ▶ 2. Workforce
- ▶ 3. Financing
- ▶ 4. Defining public health
- ▶ 5. Modernization of public health

# Governance of Local Health Departments

There are four types of governance for local health departments (LHDs) in the United States:

- ▶ Local/Decentralized: LHDs are units led by local governments, which make most fiscal decisions.
- ▶ State/Centralized: All LHDs are units of the state government, which makes most fiscal decisions.
- ▶ Mixed: Some LHDs are led by state government, and some are led by local government. No one arrangement predominates in the state.
- ▶ Shared: All local health departments are governed by both state and local authorities.





# Variations in KS Service Delivery Models

- ▶ Hospital led: Cheyenne, Haskell, Stanton, Morris
- ▶ EMS led: Ellis, Phillips, Dickinson, Leavenworth
- ▶ FQHC led: Lyon
- ▶ Multi-jurisdictional: NEK (Brown, Atchison, Jackson) and SEK (Bourbon, Allen, Anderson, Woodson)
- ▶ City-County: Lawrence-Douglas County, City-Cowley County
- ▶ The remaining are county departments.

# Workforce

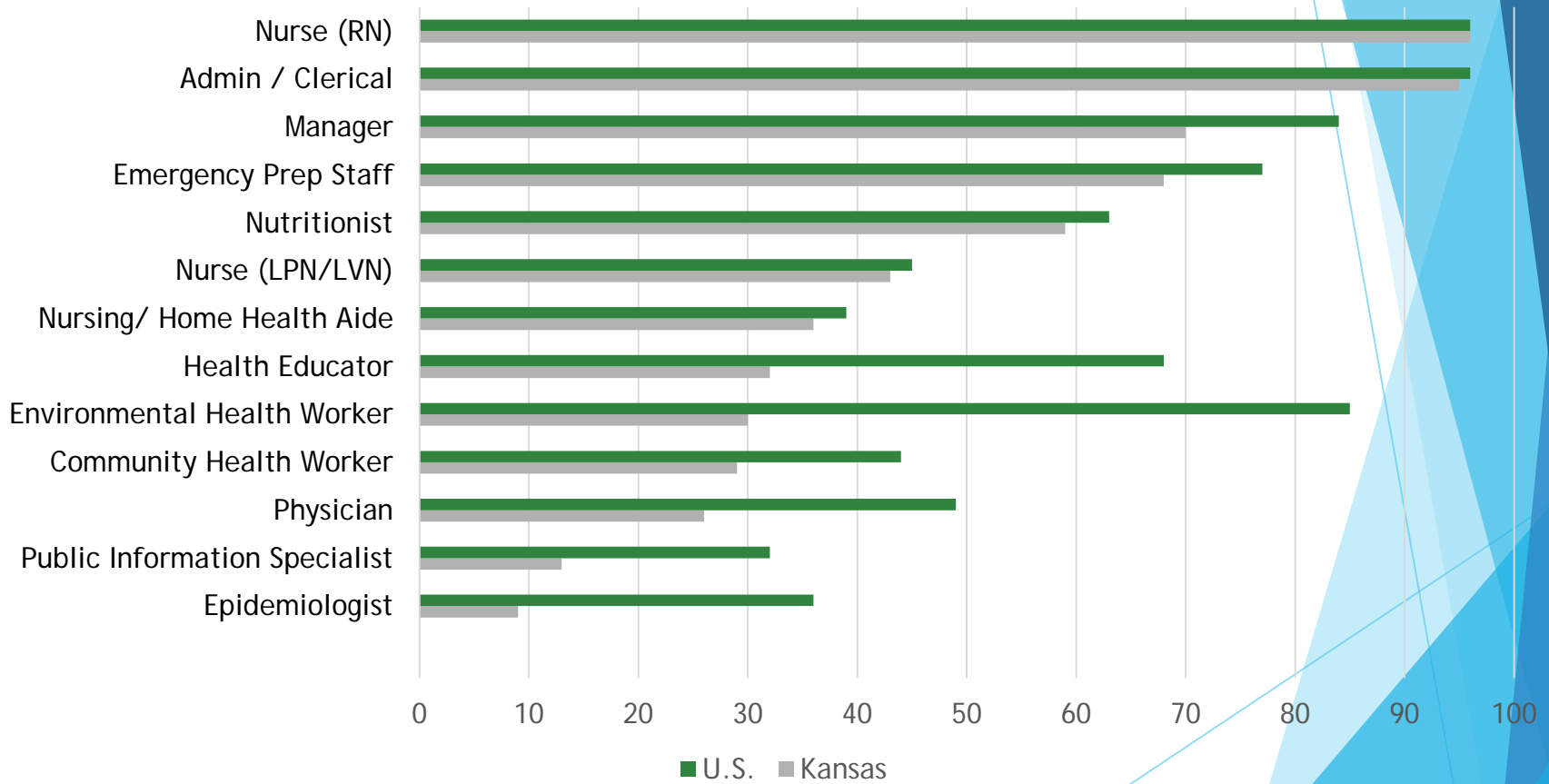
# Workforce KS Local Health Depts.

- ▶ Number of employees: ranges 1-139
  - ▶ Providing services to counties with populations ranging from ~1,300 to ~580,000
- ▶ 72% of local health departments in KS have fewer than 10 employees
- ▶ 34% have fewer than 5 employees
- ▶ Staff losses due to budget cuts
  - ▶ 24% of KS health departments lost staff in either FY2014 or FY2015



# Workforce

## Percentage of Local Health Departments With Employees in Select Occupations



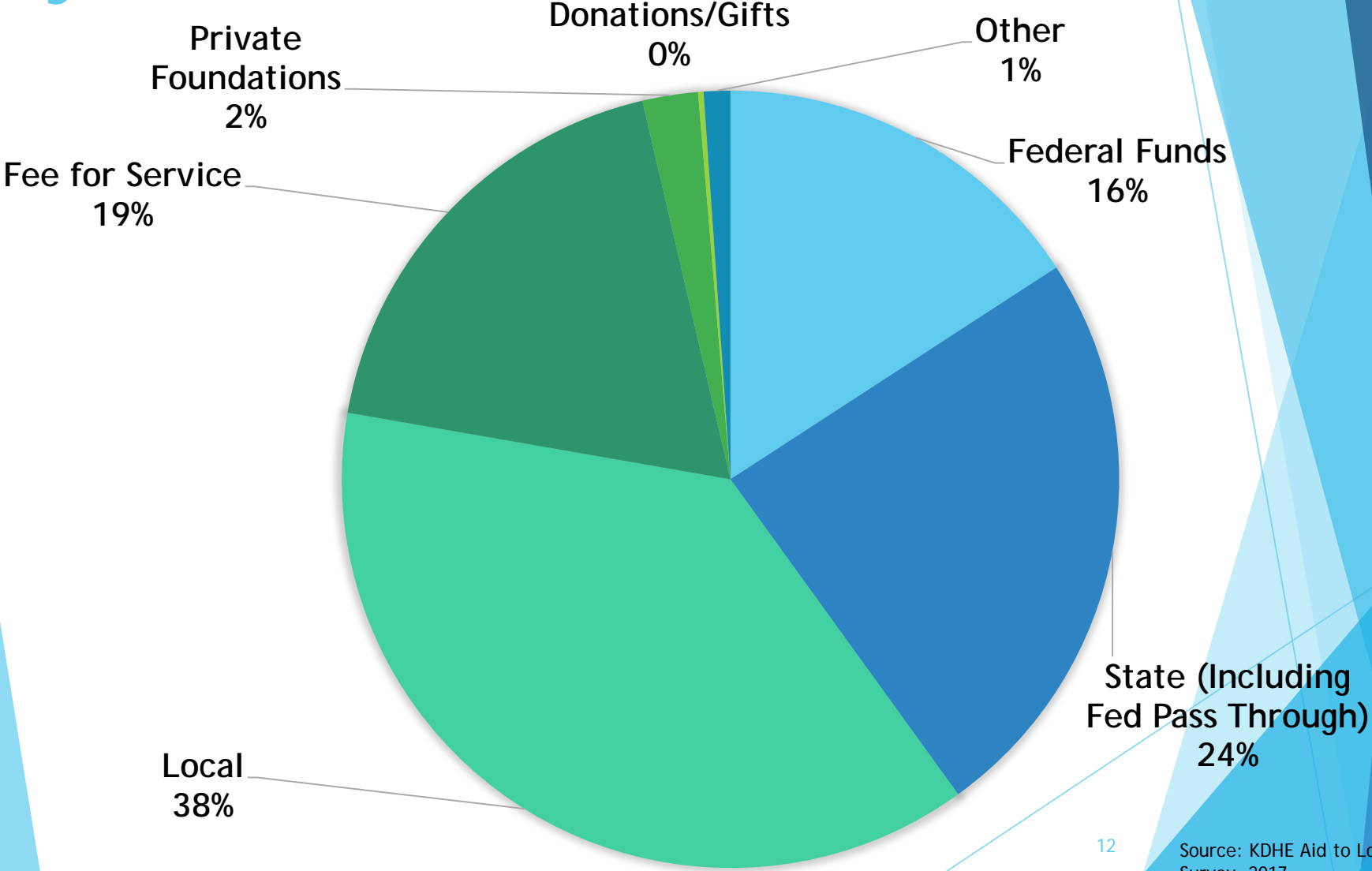
# Administrators

## Characteristics of Local Health Department Top Executives

Characteristic	Kansas (n=78-79)	National (n=1,877-1,966)
Full-Time Position	97%	90%
Female	89%	60%
White	99%	94%
Hispanic Ethnicity	0%	2%
60 Years Old or Older	15%	25%
Mean Years of Tenure	10.7 years	8.7 years
<b>Education</b>		
Any Graduate Degree	21%	60%
Any Public Health Degree	8%	22%
Any Nursing Degree	74%	32%
Any Medical Degree	0%	12%

# Funding

# Local Public Health Funding by Source, 2016



# What Is Public Health?

# Defining Public Health

According to the CDC Foundation,

- ▶ Public health is the science of protecting and improving the health of people and their communities . . .
- ▶ promotes healthy lifestyles,
- ▶ detects, prevents, and responds to infectious diseases,
- ▶ is concerned with protecting the health of entire populations,
- ▶ prevents problems by implementing educational programs, recommending policies, administering services, and conducting research, and . . .
- ▶ works to limit health disparities.

<https://www.cdcfoundation.org/what-public-health>

# Modernization of Public Health

# Primary Focus of Public Health

- ▶ Focus on prevention of communicable disease (e.g., immunizations and improved sanitation measures)
- ▶ Focus on prevention of chronic disease through positive lifestyle changes (e.g., tobacco cessation)
- ▶ *Newly emerging*, focus on broader societal issues (e.g., social determinants of health, poverty, housing)



# Advancing Public Health in Kansas



- ▶ Public health is changing. Public health in Kansas must evolve to be relevant and effective.
- ▶ There are disparities in resources, staffing (both numbers of staff members and skill sets), and services/programs between Kansas and the nation, as well as among Kansas counties.
- ▶ Funding is often siloed and insufficient.
- ▶ There is a lack of clarity about the role of public health.

# September 2015:KALHD's Vision for Local Public Health

A system of Local Health Departments committed to helping all Kansans achieve optimal health by providing Foundational Public Health Services.



# Achieving the KALHD vision requires significant *change*.

$$\mathbf{D} \times \mathbf{V} \times \mathbf{F} > \mathbf{R} = \mathbf{\Delta}$$

**D** | **x** | **V** | **x** | **F** | **>** | **R** | **=** | **Δ**

Dissatisfaction with the status quo

Vision of a positive future we all prefer

First steps we that we can take toward the vision

Resistance to change

Change

# KALHD Vision Implementation Strategies

- ▶ Define what Foundational Public Health Services (FPHS) are for Kansas.
- ▶ Educate all local health departments about FPHS.
- ▶ Conduct assessments of what local health departments in Kansas are currently providing related to FPHS.
- ▶ Develop cost estimates for FPHS in Kansas.
- ▶ Engage a broader range of stakeholders in the public health system with this vision.
- ▶ Assess the need for statutory authority for the provision of FPHS.

# Kansas Public Health Systems Group

The Public Health Systems Group is a coalition of public health, government, academic, and charitable institutions that works to protect and promote the health of Kansans.



# The Future of PH in Kansas Project

- ▶ Purpose: To strengthen and modernize the Kansas public health system in order to fully and equitably protect the health of Kansans
- ▶ Outputs: In-depth research and assessment to determine the best path forward
- ▶ Outcomes: Detailed options for policy, governance, and funding structure

# Key Considerations

- ▶ Many health departments are struggling to meet the needs of their communities, which puts the health of Kansans at risk.
- ▶ Our public health laws and the system to deliver public health services were developed decades ago, when the health challenges that our communities faced were different. While they provide a strong foundation, changes are needed to adapt to current needs.
- ▶ To advance public health in Kansas, there is a need for new models and policies.

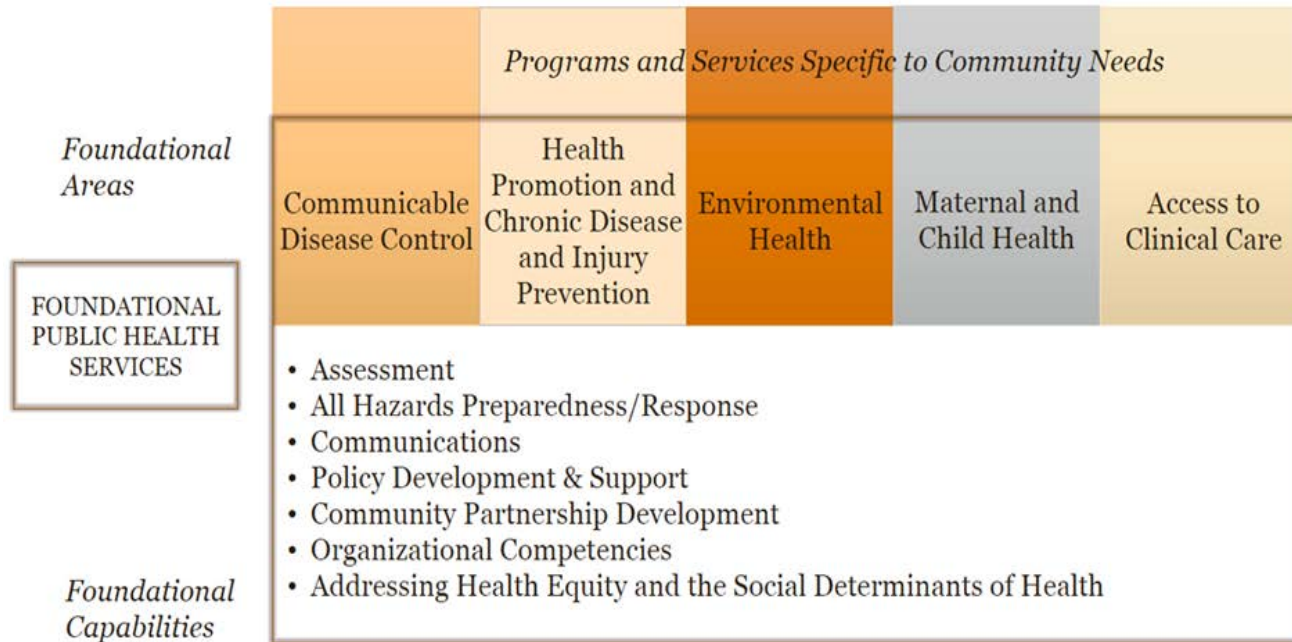
# Work-to-Date

- ▶ Extensive review of Foundational Public Health Services efforts in other states
- ▶ \*Development of the Kansas Foundational Public Health Services model\*
- ▶ Convening of the Council on the Future of Public Health in Kansas
- ▶ Kansas FPHS capacity assessment
- ▶ Kansas FPHS fiscal assessment



# The Kansas FPHS Model

## Kansas Foundational Public Health Services Model



# FPHS: Key Terminology

**Foundational Capabilities (FCs):** Cross-cutting skills needed in state/local health departments everywhere for the health system to work anywhere; essential skills/capacities to support all activities

**Foundational Areas (FAs):** Substantive areas of expertise or program-specific activities in all state/local health departments necessary to protect the community's health

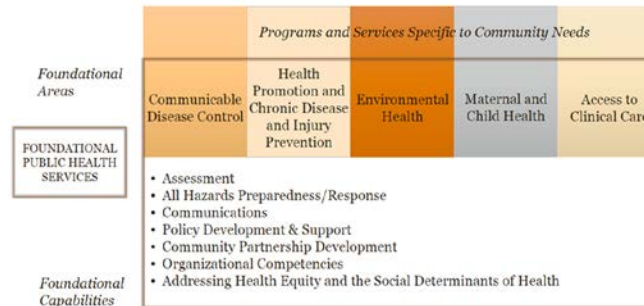
**Programs/Activities Specific to a Health Department or a Community's Needs:** Additional, critical activities significant to a specific community's health, supported by FAs/FCs; most of a health department's work

**Foundational PH Services (FPHS):** Comprised of the FCs and FAs; a suite of skills, programs/activities that must be available in state/local health departments system-wide

# Work In-Progress

- ▶ By the end of the year, the PHSG will issue The Future of Public Health in Kansas Report
- ▶ The report will combine the research conducted over the past two years to identify options to modernize the Kansas public health system and move toward implementation of the FPHS model.

## Kansas Foundational Public Health Services Model



# Future Work; Moving Toward Implementation

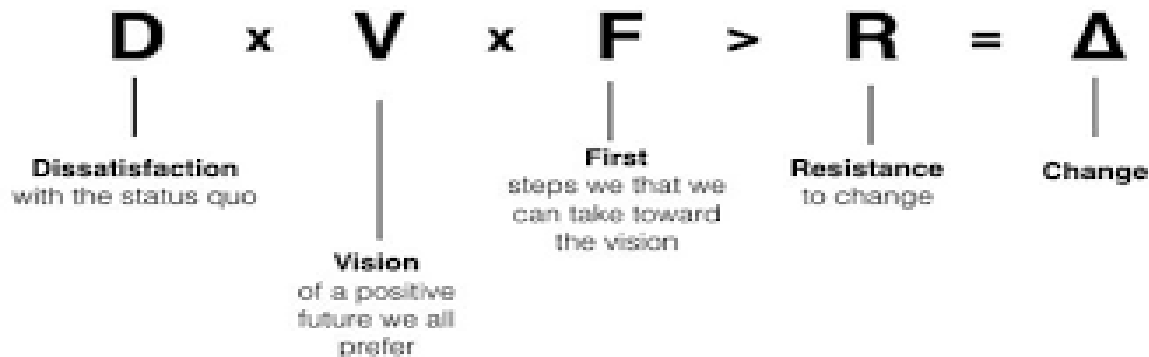
- ▶ We are engaging state, local, and cross-sector partners to determine the feasibility of applying the Foundational Public Health Services in a rural, decentralized state in a four-county pilot site.
- ▶ Over the next year, the pilot site will develop and document the planning process to implement the model of Foundational Public Health Services, to create a local implementation plan.
- ▶ The plan will be replicable for use in other areas of the state.

# Future Work; Moving Toward Implementation

- ▶ Cross-jurisdictional sharing is a key component/strategy for implementation.
- ▶ In conjunction with local implementation plan, we are developing a state-level modernization roadmap.
- ▶ To ensure accountability and measure effectiveness/outcomes, an FPHS performance management system is being created.

# In Conclusion

- ▶ There is dissatisfaction with the status quo.
- ▶ PH in Kansas must modernize to meet the evolving needs of the population.
- ▶ All Kansans should have access to a core set of PH services, regardless of the jurisdiction in which they live, to ensure the public's health.
- ▶ The vision for a positive future has been identified.
- ▶ We have taken the first steps toward achieving the vision.



**Vision:** A system of Local Health Departments committed to helping all Kansans achieve optimal health by providing Foundational Public Health Services.



- ▶ State Association for City-County Health Officials
- ▶ Affiliate member of the Kansas Association of Counties
- ▶ Nonprofit association dedicated to strengthening local health departments for the purpose of improving and protecting the health of all Kansans
- ▶ Membership consists of 93 of the 100 local health departments in Kansas