

Kansas Community Foundations **Supporting strong, thriving Kansas communities**

September 2017 ♦ Topeka, Kansas
Kansas Community Foundations & Health



Tatiana Lin
Kansas Health Institute
tlin@khi.org



Carlie Houchen
Kansas Health Institute
chouchen@khi.org

WHO WE ARE

- Nonprofit, nonpartisan health policy and research organization based in Topeka.
- Established in 1995 with a multi-year grant by the Kansas Health Foundation and located directly across from Kansas Statehouse in downtown Topeka.
- Committed to convening meaningful conversations around tough topics related to health.

LEARNING OBJECTIVES

1. Learn about how community foundations can invest in issues that shape health
2. Learn how to balance differing priorities
3. Identify strategies for cultivating interest from donors and others in investing in new areas

COMMUNITY FOUNDATION ROLES

**Training/capacity
building for local
organizations**

**Convening about
issues of local
concern**

Advocacy

Knowledge sharing

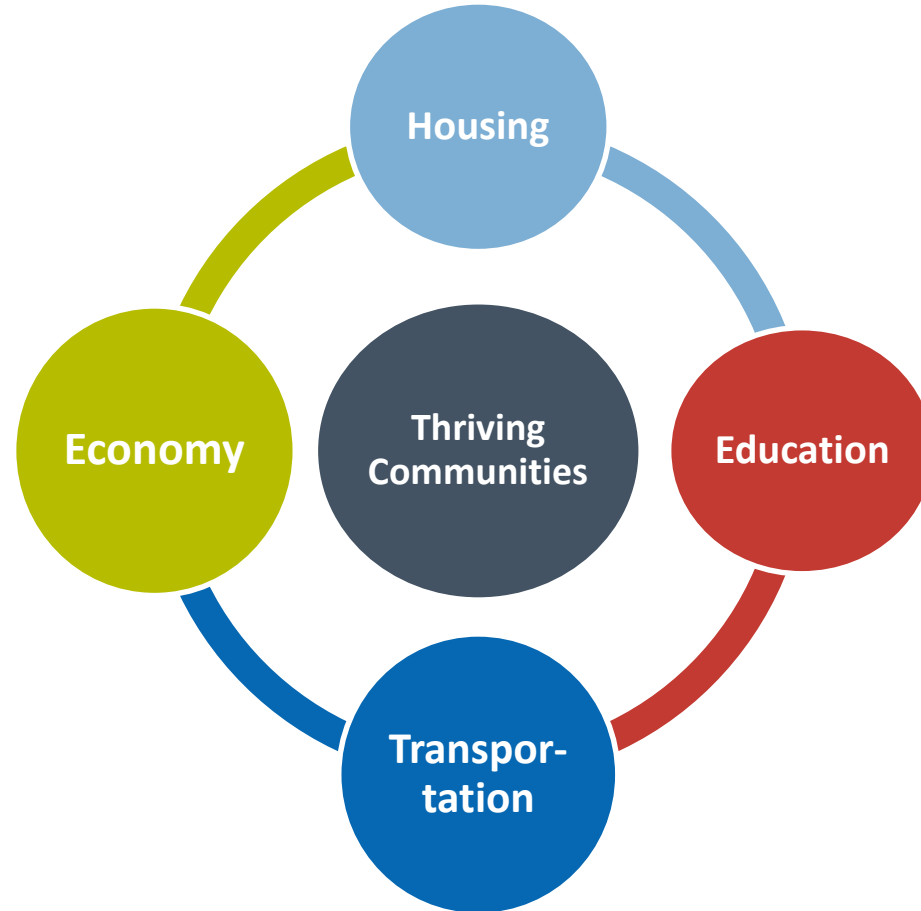
**Community needs
assessment**

**Support of
nonprofits**

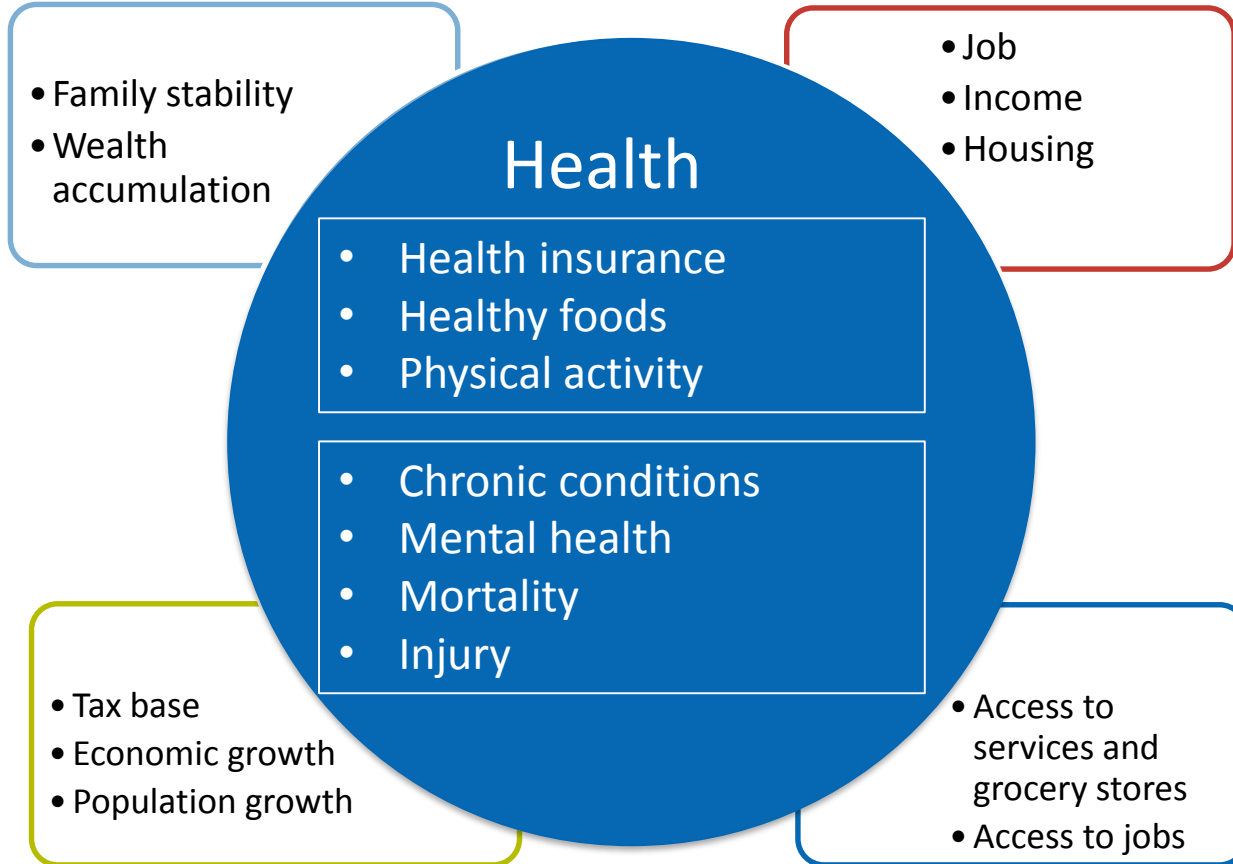
1.

**WHAT ARE ADDITIONAL
OPPORTUNITIES TO IMPROVE THE
QUALITY OF LIFE IN
COMMUNITIES?**

COMMON GOAL



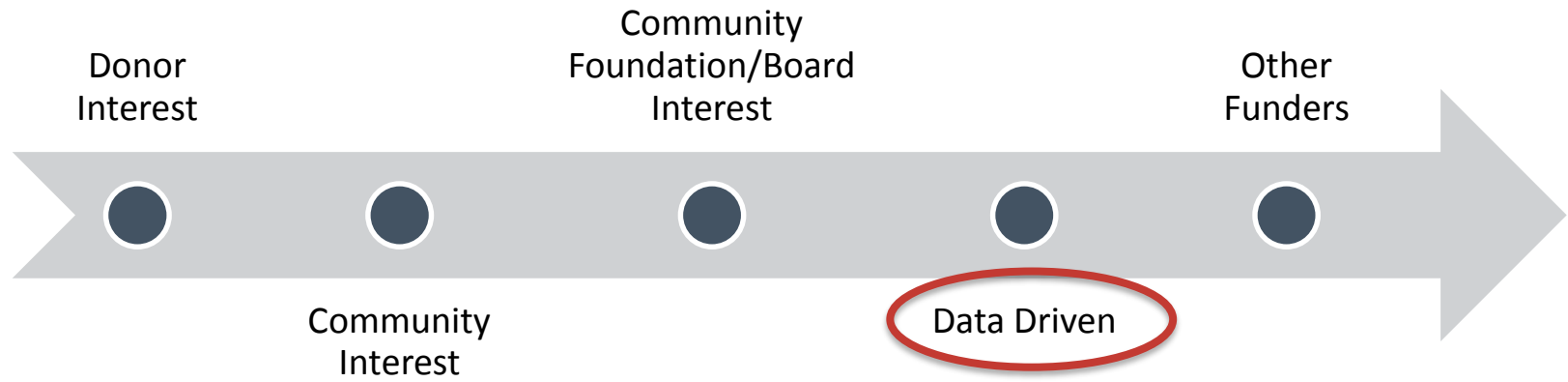
OPPORTUNITIES



2.

BALANCING MULTIPLE PRIORITIES

HOW DO WE CHOOSE?



USING DATA TO INFORM PRIORITIES

- Another way to see our community
- Perceived problem vs. actual problem
- In-depth information about the problem, its causes and affected population

IDENTIFYING COMMUNITY DATA

- ✓ Utilize Community Partners
 - ✓ Nonprofits
 - ✓ Local Health Departments
 - ✓ Academia
 - ✓ Various Sectors
- ✓ Access Data Sources
 - ✓ Kansas Health Matters
 - ✓ County Health Rankings
 - ✓ Community Commons

HOW HEALTHY IS YOUR COMMUNITY?



**County Health
Rankings & Roadmaps**

Building a Culture of Health, County by County



KansasHealthMatters

WHERE DO WE START...

Step 1:

Visit Kansas Health Matters website

KansasHealthMatters

Find Data | Create Reports | Explore Promising Practices | Locate Resources and Funding | Kansas Initiatives

Find Data by Topic and Location

SocioNeeds Index
Find the areas of highest need in your community

- Build a Custom Dashboard
- Find Health Disparities
- Learn to use the Dashboards
- Health Assessment & Improvement Tools

FOCUS ON

Stroke
Stroke, also known as cerebrovascular disease, is one of two major components of cardiovascular disease, a leading cause of death and major contributor to health care costs in Kansas. Stroke is responsible for about 1 in 16 deaths to Kansas residents.
[Learn More →](#)

Age-Adjusted Years of Potential Life Lost - Cerebrovascular Disease (Compared to Prior Value)	Stroke: Medicare Population (Compared to U.S. States)	Age-adjusted Cerebrovascular Disease Mortality Rate per 100,000 population (Compared to U.S. Value)	Percent of Adults who are Obese (Compared to U.S. Value)
--------------------------------------------------------------------------------------------------	----------------------------------------------------------	--------------------------------------------------------------------------------------------------------	-------------------------------------------------------------

State: Kansas

WHERE DO WE START...

Step 2:



Choose the location of interest.

Community Health Dashboards

[Build a Custom Dashboard](#)

Learn about your community's health and wellness. Start by choosing a location type below. Or you can search for a specific indicator, specific location, or select one of the dashboards below. Click "Build a Custom Dashboard" to create your own dashboard by location, topic and more.

Kansas State **Public Health Preparedness Regions** **Counties** **Zip Codes** **Census Tracts**

Q Search by Keyword

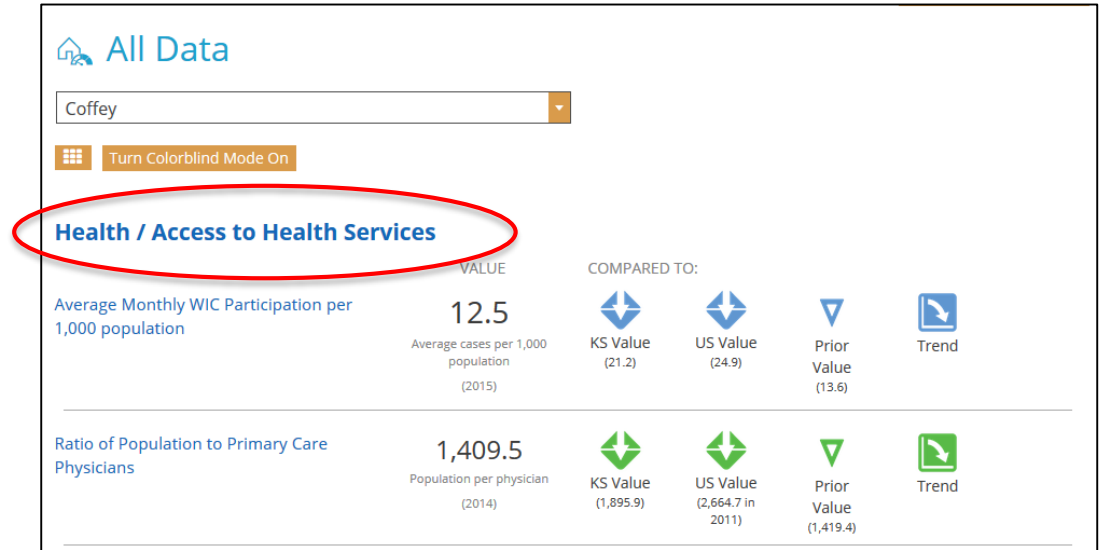
Find an Indicator OR Find a Location

- Key Health Indicators**
20 indicators addressing health issues prevalent throughout Kansas
- Disparities Dashboard**
View all indicators that include breakout data by topics such as race/ethnicity, age and gender
- Indicator List by Topic**
View a list of all indicators by topic and see at what location data is available
- All Data**
This dashboard contains data for all indicators at all locations
- Healthy People 2020 Progress Tracker**

WHERE DO WE START...

Step 3:

Review data for your location and identify areas of need.



Percent of births Where Mother Smoked During Pregnancy

29.5%

(2013-2015)



KS Value
(11.8%)



US Value
(8.5%)



Prior Value
(30.2%)



Trend



HP 2020
Target
(1.4%)

**Indicator
(smoking during
pregnancy)**

How is your county
doing in comparison
to Kansas?

Example
County: 29.5%
Kansas: 11.8%

How is your county
doing in comparison
to U.S.A.?

Example
County: 29.5%
U.S.A.: 8.5%

Are we doing better
or worse than
before?

=
Prior Value
(30.2%)



Trend

USING DATA TO IDENTIFY ISSUES

Children Living Below Poverty Level

22.5%
(2011-2015)



Compared to:



KS Value
(18.1%)



US Value
(21.7%)

=

Prior Value
(21.3%)



Trend

Severe Housing Problems

10.1%
(2009-2013)



Compared to:



KS Value
(13.5% in
2008-2012)



US Value
(19.0%)

=

Prior Value
(9.1%)



Trend



How Can Data Help to Identify Disparities?

HEALTH DISPARITY IS...

Health Disparity: *differences in health status and mortality rates across population groups.*

- Age
- Gender
- Race/Ethnicity
- Geography
- Income
- Education

DISPARITIES DASHBOARD

Economy / Poverty

Children Living Below Poverty Level

VALUE
18.1%
(2011-2015)

COMPARED TO:



U.S. States



US Value
(21.7%)

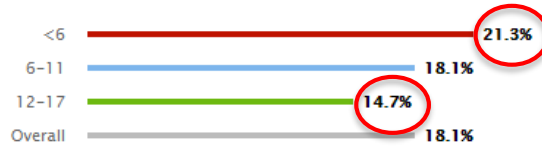


Prior Value
(18.5%)



Trend

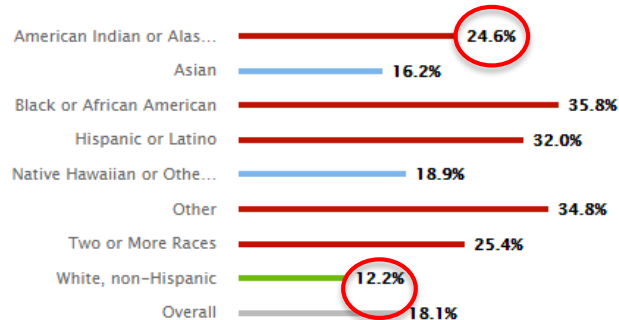
Children Living Below Poverty Level by Age



Children Living Below Poverty Level by Gender

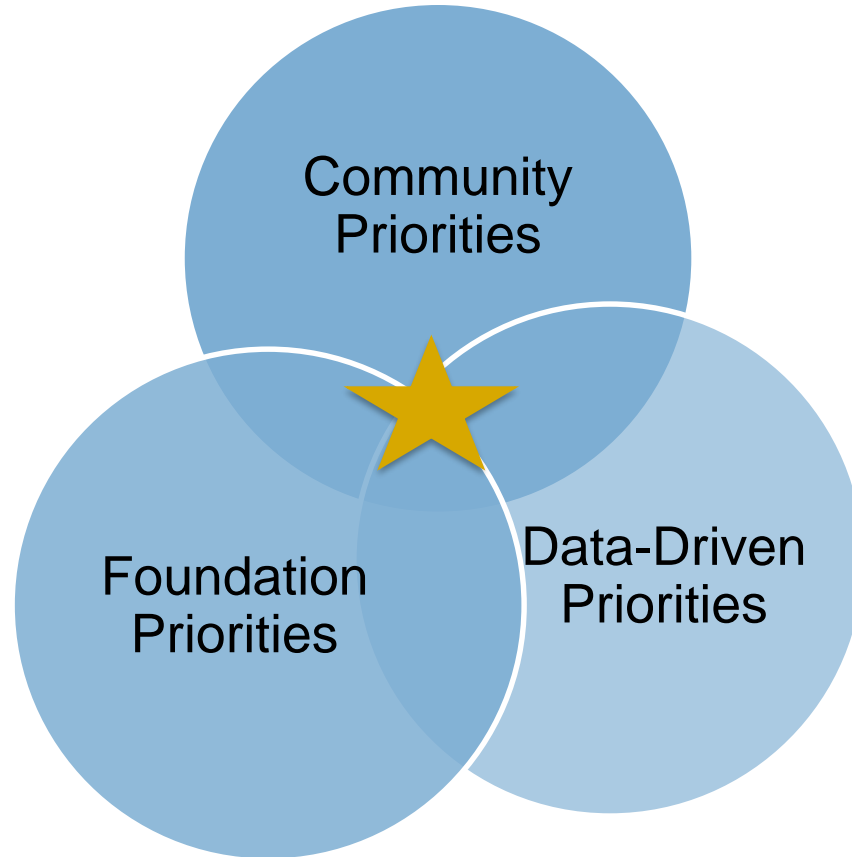


Children Living Below Poverty Level by Race/Ethnicity



Source: Kansas Health Matters, 2017.

FINDING COMMON PRIORITIES



Top Issues Impacting the Health of Children



Community Driven Priorities



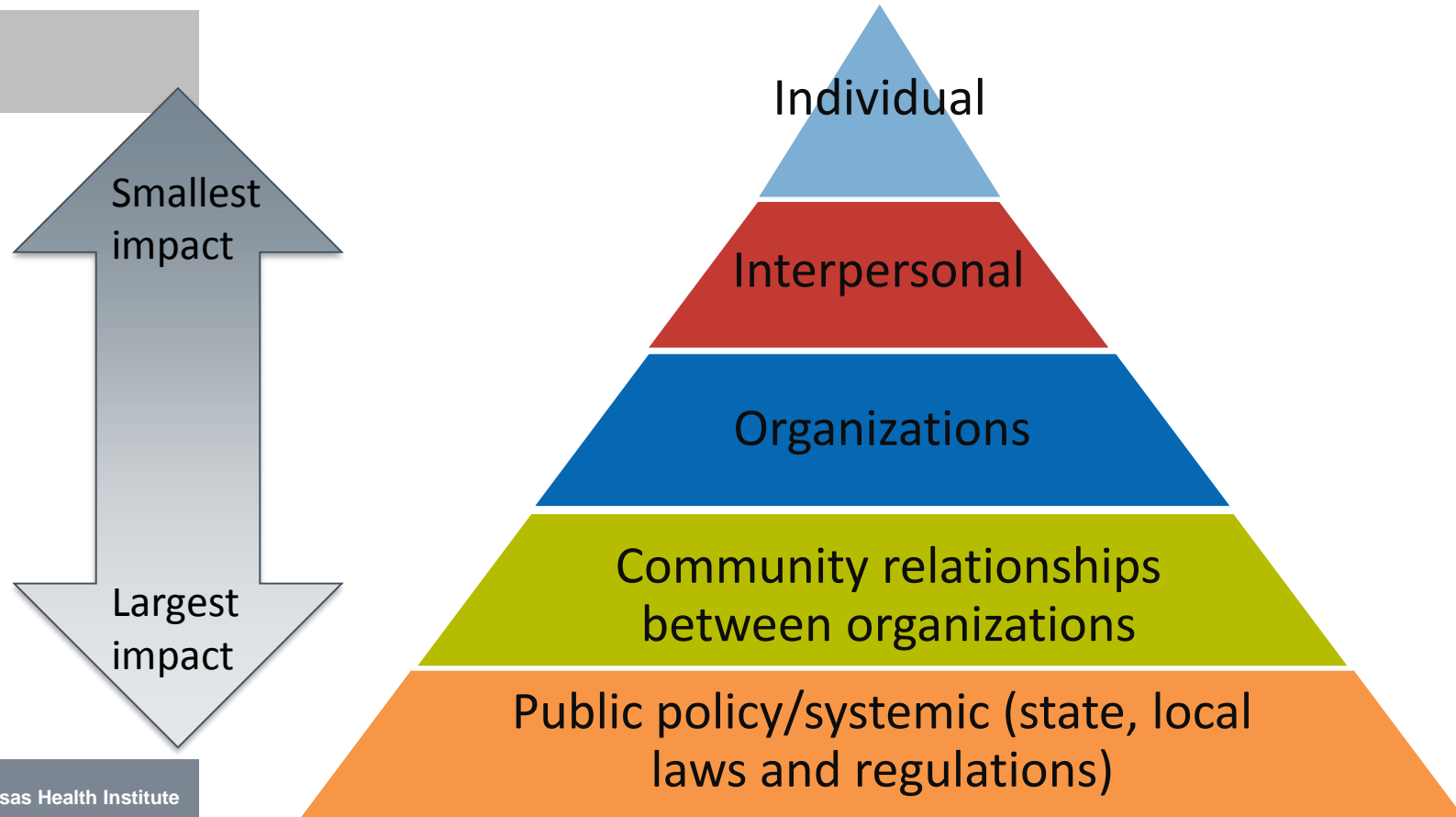
Data Driven Priorities





How Do We Select An Intervention?

INTERVENTIONS BY LEVEL OF IMPACT



LEVEL OF INTERVENTION: EXAMPLE

Smallest impact

Largest impact



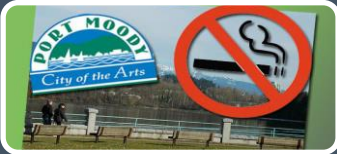
Individual Level

A large majority of smokers know that smoking is bad, and many have tried to quit.



Interpersonal Level

Many smokers are encouraged by families, friends and physicians to quit smoking or join smoking cessation.



Institutional/Community Level

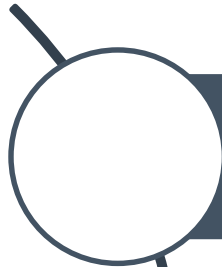
Many worksites, cities and towns prohibit smoking in/around buildings and public spaces.



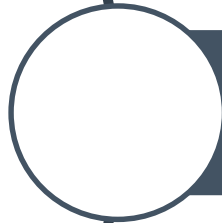
Public Policy

Many states have passed clean indoor air laws and increased taxes on cigarettes.

CONSIDERATIONS



Interventions that focus on multiple levels of influence are more likely to be effective.



Interventions that include several activities are more likely to be effective.



The right combination of activities depends on the needs of the population.



Interventions: Housing, Education, Transportation and Economic Development



Wichita, Kansas

Housing

HOUSING

Smoke-free
policies for multi-
unit housing

Housing
affordability

Blight-focused
efforts

Mixed-use
development

Age-in-place
policies

HOUSING

Blight-focused
efforts

Community Foundations: Roles

- Convene community stakeholders
- Fund training for volunteers to help residents assess and remediate home health risks and recommend low-cost changes (e.g., improved ventilation, fall risks)
- Match funds for neighborhood revitalization projects



Lola, Kansas

Economic Development

ECONOMIC DEVELOPMENT

Resource Inventory

Workforce
Development

Grocery Stores

Organize Local
Business Alliances

Living Wages

Community
Resource
Development

Business Incubator
Space

ECONOMIC DEVELOPMENT

Workforce Development

Community Foundations: Roles

- Fund workforce needs assessment
- Provide information to businesses interested in coming to the community
- Provide scholarships to students to gain training in careers needed in the community
- Invest in quality of life



Topeka, Kansas

Education

EDUCATION

Water bottle refill
stations at
schools

Farm-to-school
programs/school
gardens

Universal pre-K

Internet access

Walking school
bus

EDUCATION

Walking School Bus

Community Foundations: Roles

- Convene stakeholders (e.g., schools, police)
- Fund assessment of sidewalks
- Fund assessment and development of map routes
- Fund volunteer recruitment and development of process/procedures (e.g., weather cancellation)
- Support marketing of the program



Lawrence, Kansas

Transportation

TRANSPORTATION

Active
Transportation

Public
Transportation

Comprehensive
Planning

TRANSPORTATION

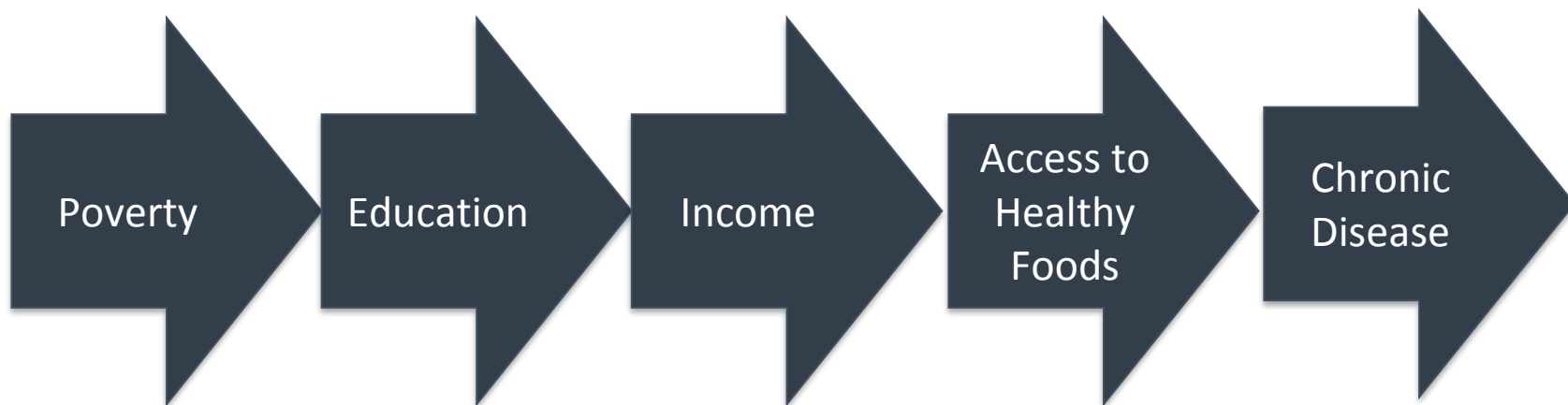
Comprehensive
planning

Community Foundations: Roles

- Convene community to discuss transportation needs
- Fund transportation planning and implementation
 - E.g., Bike racks, bike lanes, signage for trails and parks

It's All Connected:

Addressing Issues → *Poverty, Education, Economic Development* → *Health*

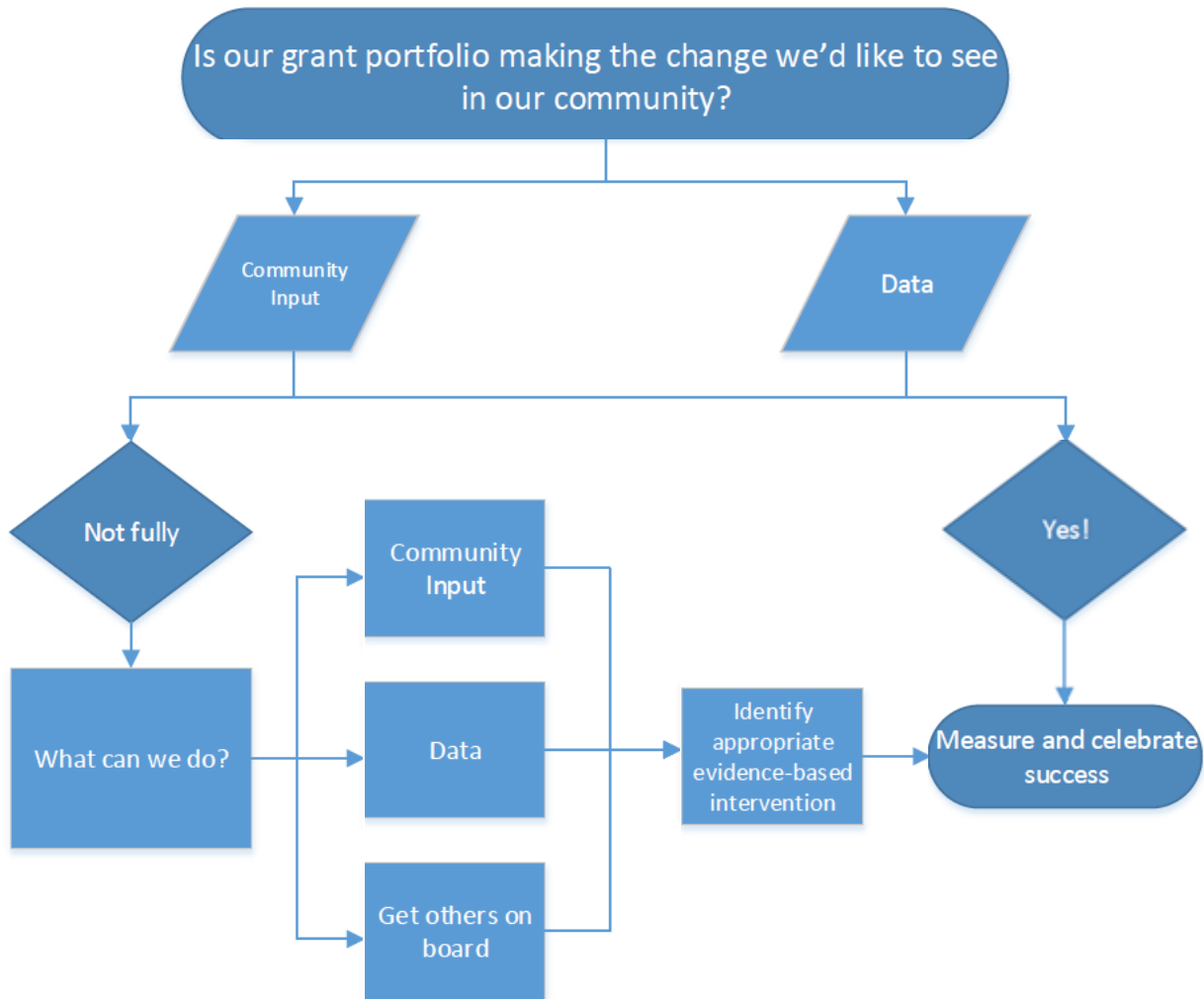




Getting Others on Board

KEY STRATEGIES

- Donors
- Community
- Board
- Convene conversations
 - Identify priorities
 - Share data
 - Frame within common goals
 - Establish a shared vision
- Peer networking
- Communicate successes



THRIVING COMMUNITIES





KANSAS
HEALTH
INSTITUTE

Informing Policy. Improving Health.



THANK YOU

Any questions?

You can connect with us at: chouchen@khi.org and
tlin@khi.org

 212 SW 8th Avenue | Suite 300
Topeka, Kansas | 66603-3936

 785.233.5443

 khi.org

 /KHIorg

 @KHIorg
45



KANSAS
HEALTH
INSTITUTE

Informing Policy. Improving Health.