

**County Health
Rankings & Roadmaps**

Building a Culture of Health, County by County

A Robert Wood Johnson Foundation program

2015 *County Health Rankings*

Kansas



A collaboration between the Robert Wood Johnson Foundation and the University of Wisconsin Population Health Institute.



Support provided by

Robert Wood Johnson Foundation

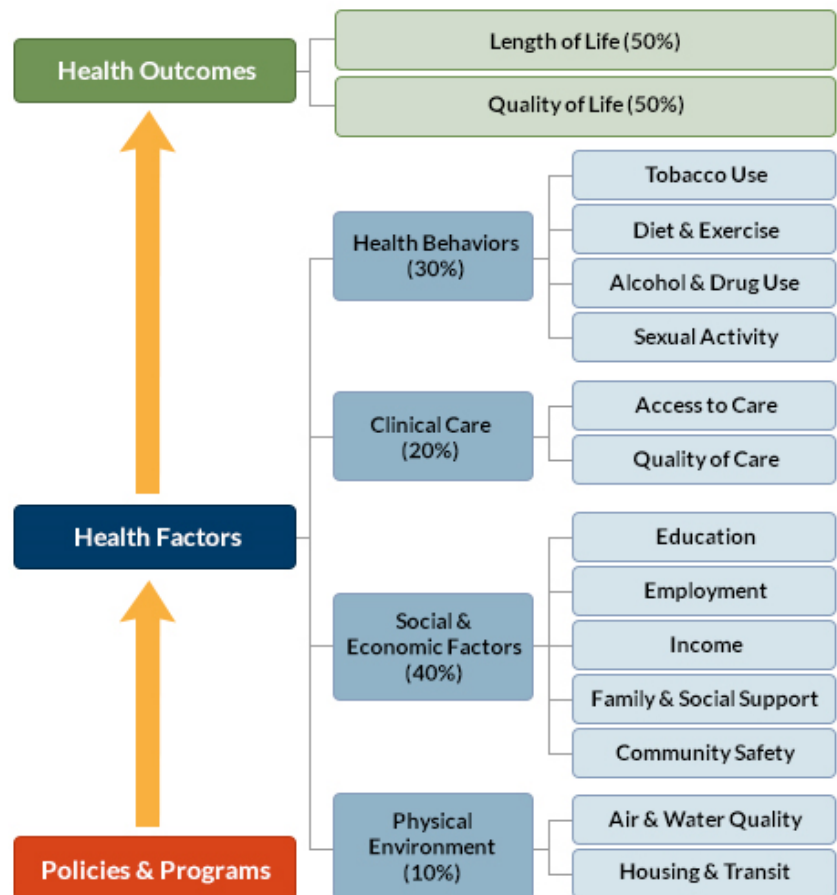


INTRODUCTION

The *County Health Rankings & Roadmaps* program helps communities identify and implement solutions that make it easier for people to be healthy in their homes, schools, workplaces, and neighborhoods. The Robert Wood Johnson Foundation (RWJF) collaborates with the University of Wisconsin Population Health Institute (UWPHI) to bring this program to cities, counties, and states across the nation. Ranking the health of nearly every county in the nation, the *County Health Rankings* illustrate what we know when it comes to what is making people sick or healthy. The *Roadmaps to Health* and *RWJF Culture of Health Prize* show what we can do to create healthier places to live, learn, work, and play.

WHAT ARE THE COUNTY HEALTH RANKINGS?

Published online at countyhealthrankings.org, the *Rankings* help counties understand what influences how healthy residents are and how long they will live. The *Rankings* are unique in their ability to measure the current overall health of each county in all 50 states. They also look at a variety of measures that affect the future health of communities, such as high school graduation rates, access to healthy foods, rates of smoking, obesity, and teen births. Communities use the *Rankings* to identify and garner support for local health improvement initiatives among government agencies, healthcare providers, community organizations, business leaders, policy makers, and the public.



MOVING FROM DATA TO ACTION

Roadmaps to Health help communities bring people together to look at the many factors that influence health, select strategies that work, and make changes that will have a lasting impact. The *Roadmaps* focus on helping communities move from awareness about their county's ranking to action

to improve people's health. The *Roadmaps to Health* Action Center is a one-stop shop of information to help any community member or leader who wants to improve their community's health by addressing factors that we know influence health, such as education, income, and community safety.

Within the Action Center you will find:

- Online step-by-step guidance and tools to move through the Action Cycle
- *What Works for Health* – a searchable database of evidence-informed policies and programs that can improve health

- Webinars featuring local community members who share their tips on how to build a healthier community
- Community coaches, located across the nation, who provide customized consultation to local leaders who request guidance in how to accelerate their efforts to improve health. You can contact a coach by activating the Get Help button at countyhealthrankings.org

LEARNING FROM OTHERS

At countyhealthrankings.org, we feature stories from communities across the nation who have used data from the *County Health Rankings* or have engaged in strategies to improve health. The *RWJF Culture of Health Prize* recognizes communities that are creating powerful partnerships and deep commitments to enable everyone in our diverse society to lead healthy lives now and for generations to come. The Prize is awarded annually by RWJF to honor communities that are working to build a Culture of Health by implementing solutions that give everyone the opportunity for a healthy life. In 2015, up to 10 winning communities will each receive a \$25,000 cash prize and have their stories shared broadly with the goal of inspiring locally driven change across the nation.

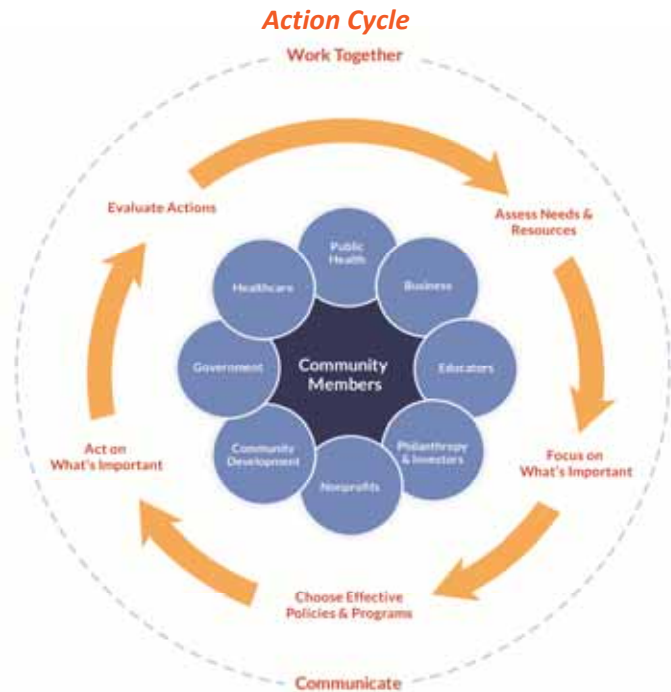
Prize winners are selected based on how well they demonstrate their community's achievement on their journey to a Culture of Health in the following areas:

- Defining health in the broadest possible terms
- Committing to sustainable systems changes and long-term policy-oriented solutions
- Cultivating a shared and deeply held belief in the importance of equal opportunity for health
- Harnessing the collective power of leaders, partners, and community members
- Securing and making the most of resources
- Measuring and sharing progress and results

Visit countyhealthrankings.org or rwjf.org/prize to learn about the work of past Prize winners and the application process.

HOW CAN YOU GET INVOLVED?

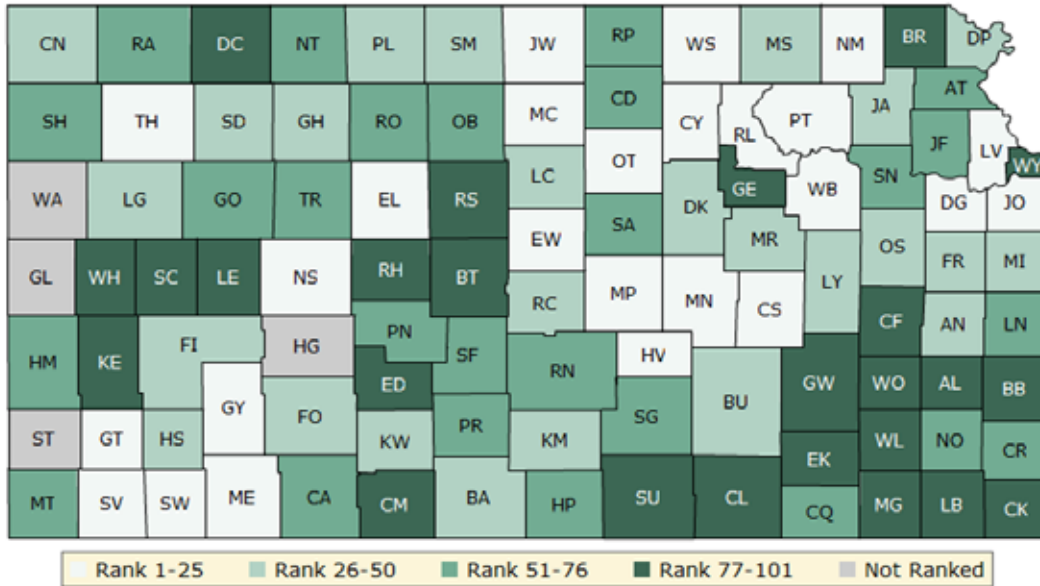
You might want to contact your local affiliate of United Way Worldwide or the National Association of Counties – their national parent organizations have partnered with us to raise awareness and stimulate action to improve health in their local members' communities. By connecting with other leaders interested in improving health, you can make a difference in your community. In communities large and small, people from all walks of life are taking ownership and action to improve health. Visit countyhealthrankings.org to get ideas and guidance on how you can take action in your community. Working with others, you can improve the health of your community.



HOW DO COUNTIES RANK FOR HEALTH OUTCOMES?

The green map below shows the distribution of Kansas's **health outcomes**, based on an equal weighting of length and quality of life.

Lighter colors indicate better performance in the respective summary rankings. Detailed information on the underlying measures is available at countyhealthrankings.org.

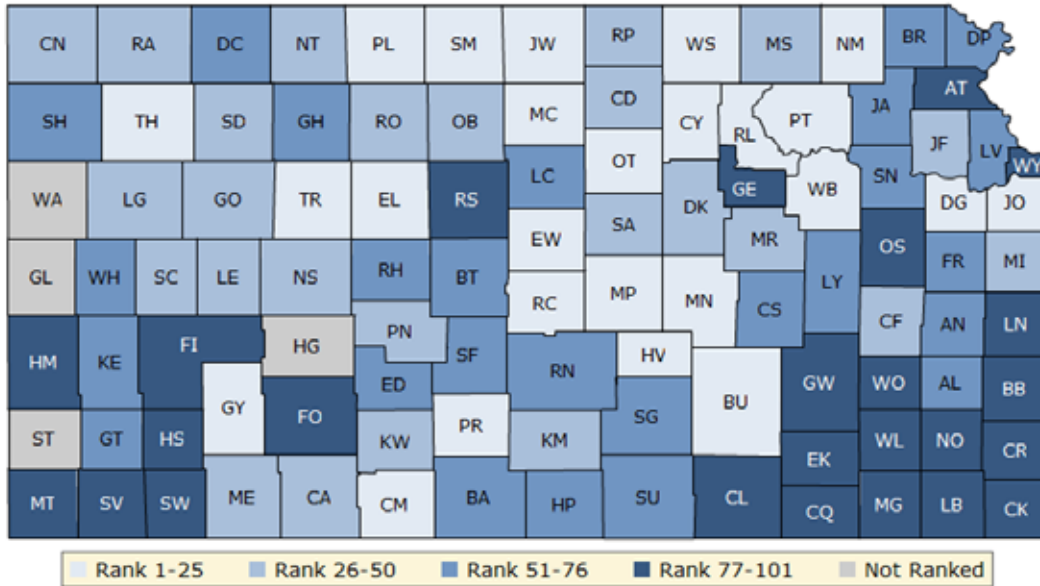


County	Rank	County	Rank	County	Rank	County	Rank
Allen	87	Finney	44	Logan	32	Rooks	75
Anderson	47	Ford	31	Lyon	46	Rush	89
Atchison	68	Franklin	42	Marion	9	Russell	90
Barber	35	Geary	79	Marshall	34	Saline	72
Barton	86	Gove	67	McPherson	12	Scott	92
Bourbon	93	Graham	41	Meade	15	Sedgwick	63
Brown	84	Grant	22	Miami	33	Seward	25
Butler	26	Gray	10	Mitchell	14	Shawnee	56
Chase	17	Greeley	NR	Montgomery	88	Sheridan	30
Chautauqua	53	Greenwood	98	Morris	40	Sherman	64
Cherokee	99	Hamilton	58	Morton	59	Smith	28
Cheyenne	49	Harper	60	Nemaha	13	Stafford	57
Clark	65	Harvey	18	Neosho	70	Stanton	NR
Clay	20	Haskell	29	Ness	16	Stevens	4
Cloud	71	Hodgeman	NR	Norton	62	Sumner	82
Coffey	78	Jackson	36	Osage	50	Thomas	6
Comanche	77	Jefferson	54	Osborne	66	Trego	76
Cowley	83	Jewell	5	Ottawa	21	Wabaunsee	19
Crawford	74	Johnson	2	Pawnee	73	Wallace	NR
Decatur	100	Kearny	81	Phillips	39	Washington	7
Dickinson	37	Kingman	38	Pottawatomie	3	Wichita	80
Doniphan	27	Kiowa	45	Pratt	61	Wilson	91
Douglas	8	Labette	97	Rawlins	69	Woodson	101
Edwards	96	Lane	85	Reno	55	Wyandotte	94
Elk	95	Leavenworth	23	Republic	51		
Ellis	11	Lincoln	48	Rice	43		
Ellsworth	24	Linn	52	Riley	1		

HOW DO COUNTIES RANK FOR HEALTH FACTORS?

The blue map displays Kansas’s summary ranks for **health factors**, based on weighted scores for health behaviors, clinical care, social and economic factors, and the physical environment.

Lighter colors indicate better performance in the respective summary rankings. Detailed information on the underlying measures is available at countyhealthrankings.org.



County	Rank	County	Rank	County	Rank	County	Rank
Allen	74	Finney	89	Logan	46	Rooks	30
Anderson	64	Ford	86	Lyon	68	Rush	66
Atchison	87	Franklin	70	Marion	17	Russell	77
Barber	59	Geary	93	Marshall	26	Saline	49
Barton	56	Gove	38	McPherson	3	Scott	35
Bourbon	83	Graham	53	Meade	48	Sedgwick	75
Brown	76	Grant	57	Miami	29	Seward	88
Butler	23	Gray	6	Mitchell	5	Shawnee	62
Chase	52	Greeley	NR	Montgomery	99	Sheridan	31
Chautauqua	100	Greenwood	81	Morris	42	Sherman	61
Cherokee	97	Hamilton	84	Morton	78	Smith	9
Cheyenne	50	Harper	73	Nemaha	2	Stafford	72
Clark	37	Harvey	8	Neosho	90	Stanton	NR
Clay	19	Haskell	80	Ness	41	Stevens	79
Cloud	39	Hodgeman	NR	Norton	47	Sumner	71
Coffey	27	Jackson	67	Osage	85	Thomas	13
Comanche	20	Jefferson	36	Osborne	43	Trego	16
Cowley	82	Jewell	12	Ottawa	4	Wabaunsee	15
Crawford	92	Johnson	1	Pawnee	44	Wallace	NR
Decatur	69	Kearny	65	Phillips	18	Washington	21
Dickinson	40	Kingman	34	Pottawatomie	10	Wichita	55
Doniphan	63	Kiowa	33	Pratt	24	Wilson	98
Douglas	7	Labette	96	Rawlins	32	Woodson	95
Edwards	60	Lane	45	Reno	51	Wyandotte	101
Elk	94	Leavenworth	54	Republic	28		
Ellis	14	Lincoln	58	Rice	25		
Ellsworth	22	Linn	91	Riley	11		

2015 COUNTY HEALTH RANKINGS: MEASURES AND NATIONAL/STATE RESULTS

Measure	Description	US Median	State Overall	State Minimum	State Maximum
HEALTH OUTCOMES					
Premature death	Years of potential life lost before age 75 per 100,000 population	7681	6812	4203	14698
Poor or fair health	% of adults reporting fair or poor health	17%	13%	5%	23%
Poor physical health days	Average # of physically unhealthy days reported in past 30 days	3.7	3.0	1.4	5.5
Poor mental health days	Average # of mentally unhealthy days reported in past 30 days	3.5	2.8	1.1	6.4
Low birthweight	% of live births with low birthweight (< 2500 grams)	8%	7.2%	3.8%	11.2%
HEALTH FACTORS					
HEALTH BEHAVIORS					
Adult smoking	% of adults who are current smokers	21%	18%	10%	28%
Adult obesity	% of adults that report a BMI ≥ 30	31%	30%	23%	39%
Food environment index	Index of factors that contribute to a healthy food environment, (0-10)	7.3	7.2	2.9	9.0
Physical inactivity	% of adults aged 20 and over reporting no leisure-time physical activity	27%	24%	17%	34%
Access to exercise opportunities	% of population with adequate access to locations for physical activity	65%	78%	0%	98%
Excessive drinking	% of adults reporting binge or heavy drinking	16%	15%	8%	28%
Alcohol-impaired driving deaths	% of driving deaths with alcohol involvement	31%	33%	0%	100%
Sexually transmitted infections	# of newly diagnosed chlamydia cases per 100,000 population	291	386	70	741
Teen births	# of births per 1,000 female population ages 15-19	41	40	13	92
CLINICAL CARE					
Uninsured	% of population under age 65 without health insurance	17%	14%	10%	23%
Primary care physicians	Ratio of population to primary care physicians	2015:1	1353:1	16142:1	545:1
Dentists	Ratio of population to dentists	2670:1	1894:1	3073:0	890:1
Mental health providers	Ratio of population to mental health providers	1128:1	581:1	16142:1	148:1
Preventable hospital stays	# of hospital stays for ambulatory-care sensitive conditions per 1,000 Medicare enrollees	65.3	60	31	186
Diabetic monitoring	% of diabetic Medicare enrollees ages 65-75 that receive HbA1c monitoring	85%	86%	65%	95%
Mammography screening	% of female Medicare enrollees ages 67-69 that receive mammography screening	61%	63.7%	39.2%	77.8%
SOCIAL AND ECONOMIC FACTORS					
High school graduation	% of ninth-grade cohort that graduates in four years	85%	85%	33%	97%
Some college	% of adults ages 25-44 with some post-secondary education	56%	68.1%	37.4%	84.0%
Unemployment	% of population aged 16 and older unemployed but seeking work	7%	5.4%	2.5%	8.3%
Children in poverty	% of children under age 18 in poverty	24%	18%	7%	38%
Income inequality	Ratio of household income at the 80th percentile to income at the 20th percentile	4.4	4.3	3.0	6.1
Children in single-parent households	% of children that live in a household headed by single parent	31%	29%	2%	49%
Social associations	# of membership associations per 10,000 population	12.6	13.8	7.7	58.7
Violent crime	# of reported violent crime offenses per 100,000 population	199	360	0	648
Injury deaths	# of deaths due to injury per 100,000 population	73.8	65	35	156
PHYSICAL ENVIRONMENT					
Air pollution – particulate matter	Average daily density of fine particulate matter in micrograms per cubic meter (PM2.5)	11.9	10.9	8.1	13.3
Drinking water violations	% of population potentially exposed to water exceeding a violation limit during the past year	1.0%	4%	0%	100%
Severe housing problems	% of households with overcrowding, high housing costs, or lack of kitchen or plumbing facilities	14%	13%	4%	24%
Driving alone to work	% of workforce that drives alone to work	80%	82%	67%	87%
Long commute – driving alone	Among workers who commute in their car alone, % commuting > 30 minutes	29%	20%	6%	51%

2015 COUNTY HEALTH RANKINGS: DATA SOURCES AND YEARS OF DATA

	Measure	Data Source	Years of Data
HEALTH OUTCOMES			
Length of Life	Premature death	National Center for Health Statistics – Mortality files	2010-2012
Quality of Life	Poor or fair health	Behavioral Risk Factor Surveillance System	2006-2012
	Poor physical health days	Behavioral Risk Factor Surveillance System	2006-2012
	Poor mental health days	Behavioral Risk Factor Surveillance System	2006-2012
	Low birthweight	National Center for Health Statistics – Natality files	2006-2012
HEALTH FACTORS			
HEALTH BEHAVIORS			
Tobacco Use	Adult smoking	Behavioral Risk Factor Surveillance System	2006-2012
Diet and Exercise	Adult obesity	CDC Diabetes Interactive Atlas	2011
	Food environment index	USDA Food Environment Atlas, Map the Meal Gap	2012
	Physical inactivity	CDC Diabetes Interactive Atlas	2011
	Access to exercise opportunities	Business Analyst, Delorme map data, ESRI, & US Census Tigerline Files	2010 & 2013
Alcohol and Drug Use	Excessive drinking	Behavioral Risk Factor Surveillance System	2006-2012
	Alcohol-impaired driving deaths	Fatality Analysis Reporting System	2009-2013
Sexual Activity	Sexually transmitted infections	National Center for HIV/AIDS, Viral Hepatitis, STD, and TB Prevention	2012
	Teen births	National Center for Health Statistics – Natality files	2006-2012
CLINICAL CARE			
Access to Care	Uninsured	Small Area Health Insurance Estimates	2012
	Primary care physicians	Area Health Resource File/American Medical Association	2012
	Dentists	Area Health Resource File/National Provider Identification file	2013
	Mental health providers	CMS, National Provider Identification file	2014
Quality of Care	Preventable hospital stays	Dartmouth Atlas of Health Care	2012
	Diabetic monitoring	Dartmouth Atlas of Health Care	2012
	Mammography screening	Dartmouth Atlas of Health Care	2012
SOCIAL AND ECONOMIC FACTORS			
Education	High school graduation	data.gov, supplemented w/ National Center for Education Statistics	2011-2012
	Some college	American Community Survey	2009-2013
Employment	Unemployment	Bureau of Labor Statistics	2013
Income	Children in poverty	Small Area Income and Poverty Estimates	2013
	Income inequality	American Community Survey	2009-2013
Family and Social Support	Children in single-parent households	American Community Survey	2009-2013
	Social associations	County Business Patterns	2012
Community Safety	Violent crime	Uniform Crime Reporting – FBI	2010-2012
	Injury deaths	CDC WONDER mortality data	2008-2012
PHYSICAL ENVIRONMENT			
Air and Water Quality	Air pollution – particulate matter ¹	CDC WONDER environmental data	2011
	Drinking water violations	Safe Drinking Water Information System	FY2013-14
Housing and Transit	Severe housing problems	Comprehensive Housing Affordability Strategy (CHAS) data	2007-2011
	Driving alone to work	American Community Survey	2009-2013
	Long commute – driving alone	American Community Survey	2009-2013

¹ Not available for AK and HI.

CREDITS

Report Authors

University of Wisconsin-Madison
School of Medicine and Public Health
Department of Population Health Sciences
Population Health Institute

Bridget Catlin, PhD, MHSA
Amanda Jovaag, MS
Julie Willems Van Dijk, PhD, RN

Suggested citation: University of Wisconsin Population Health Institute. *County Health Rankings 2015*

This publication would not have been possible without the following contributions:

Data

Centers for Disease Control and Prevention: National Center for Health Statistics and Division of Behavioral Surveillance
Dartmouth Institute for Health Policy & Clinical Practice

Research Assistance

Jennifer Buechner
Kathryn Hatchell
Hyojun Park, MA
Elizabeth Pollock
Jennifer Robinson
Matthew Rodock, MPH
Anne Roubal, MS

Communications and Outreach

Burness
Mary Bennett, MFA
Matthew Call
Kitty Jerome, MA
Stephanie Johnson, MSW
Kate Konkle, MPH
Jan O'Neill, MPA

Design

Forum One, Alexandria, VA

Robert Wood Johnson Foundation

Abbey Cofsky, MPH
Andrea Ducas, MPH
Michelle Larkin, JD, MS, RN
James Marks, MD, MPH
Joe Marx
Donald Schwarz, MD, MPH
Kathryn Wehr, MPH

County Health Rankings & Roadmaps

Building a Culture of Health, County by County

countyhealthrankings.org



University of Wisconsin Population Health Institute
610 Walnut St, #527, Madison, WI 53726
(608) 265-8240 / info@countyhealthrankings.org