

**County Health
Rankings & Roadmaps**

Building a Culture of Health, County by County

A Robert Wood Johnson Foundation program

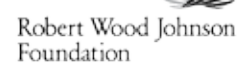
2014 *Rankings* Kansas



A collaboration between the Robert Wood Johnson Foundation and the University of Wisconsin Population Health Institute.



Support provided by



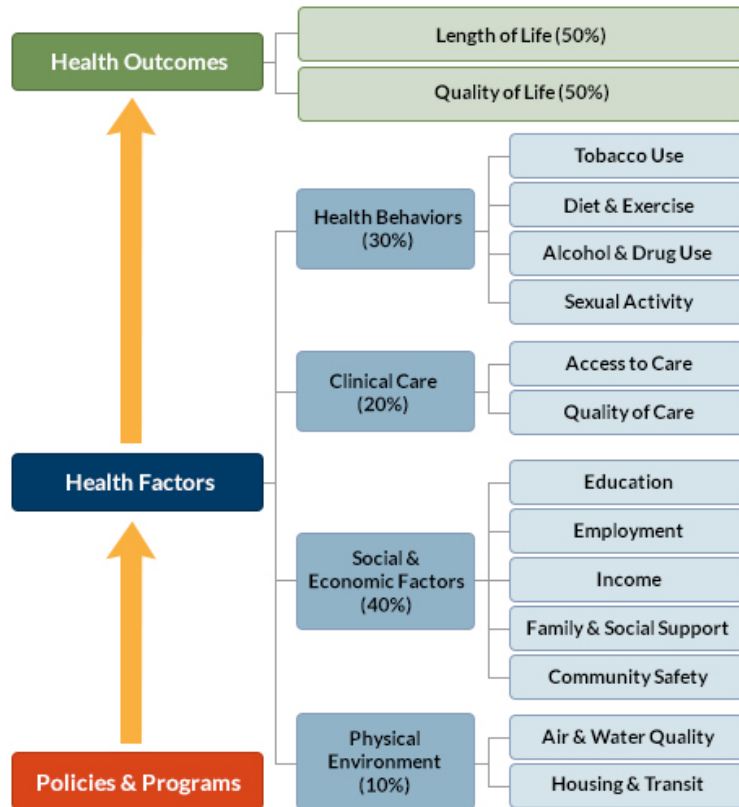
INSIDE FRONT COVER – INTENTIONALLY BLANK

INTRODUCTION

The *County Health Rankings & Roadmaps* program helps communities identify and implement solutions that make it easier for people to be healthy in their schools, workplaces, and neighborhoods. Ranking the health of nearly every county in the nation, the *County Health Rankings* illustrate *what we know* when it comes to what is making people sick or healthy. The *Roadmaps* show *what we can do* to create healthier places to live, learn, work, and play. The Robert Wood Johnson Foundation (RWJF) collaborates with the University of Wisconsin Population Health Institute (UWPHI) to bring this program to cities, counties, and states across the nation.

WHAT ARE THE COUNTY HEALTH RANKINGS?

The *County Health Rankings* measure the health of nearly every county in the nation. Published online at countyhealthrankings.org, the *Rankings* help counties understand what influences how healthy residents are and how long they will live. The *Rankings* look at a variety of measures that affect health, such as high school graduation rates, access to healthy foods, rates of smoking, obesity, and teen births. Based on data available for each county, the *Rankings* are unique in their ability to measure the overall health of each county in all 50 states. They have been used to garner support for local health improvement initiatives among government agencies, healthcare providers, community organizations, business leaders, policy makers, and the public.



HOW ARE PEOPLE USING THE RANKINGS?

- Ø Highlighting community success
- Ø Identifying root causes of poor health
- Ø Supporting policy change
- Ø Engaging communities in health improvement

For more information, visit countyhealthrankings.org

WHAT ARE THE ROADMAPS TO HEALTH?

The *Roadmaps to Health* help communities bring people together to look at the many factors that influence health, select strategies that work, and make changes that will have a lasting impact. The *Roadmaps* focus on helping communities determine what they can do and what they can learn from others.

What You Can Do

The *Roadmaps to Health* Action Center provides step-by-step guides, tools, and webinars to help groups working to improve the health of their communities. Community Coaches also provide customized consultation to local communities that have demonstrated a willingness to address factors that we know influence health, such as education, income, and community safety.

The Action Center also features *What Works for Health* – a searchable database of evidence-informed policies and programs that can improve health.

Learning From Others

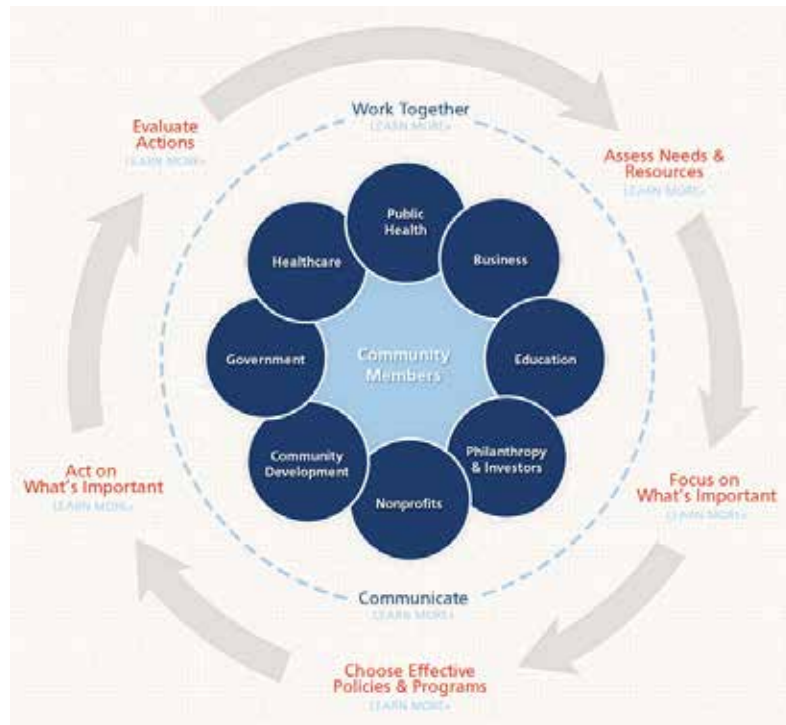
Honoring the efforts of communities working at the forefront of health improvement, the Robert Wood

Johnson Foundation annually awards the *RWJF Culture of Health Prize* to outstanding communities that are working toward better health. The *Prize* recognizes communities with strong and diverse partnerships that are coming together with a shared vision and commitment to address multiple factors that affect health and make lasting changes that create a culture of health for all. Visit countyhealthrankings.org or rwjf.org/prize to learn about the work of past prize winners.

At countyhealthrankings.org, we also feature stories from communities across the nation who have used data from the *County Health Rankings* or have engaged in strategies to improve health. For example, you can learn from the successes and challenges of the 30 *Roadmaps to Health* Community Grantees. These grantees are working to create positive policy or systems changes that address social and economic factors that influence how healthy people are and how long they live, such as education and community safety. You might also want to contact your local affiliate of United Way Worldwide, the National Business Coalition on Health, or the National Association of Counties - their national parent organizations have partnered with us to raise awareness and stimulate action to improve health in their local members' communities.

How can you get involved?

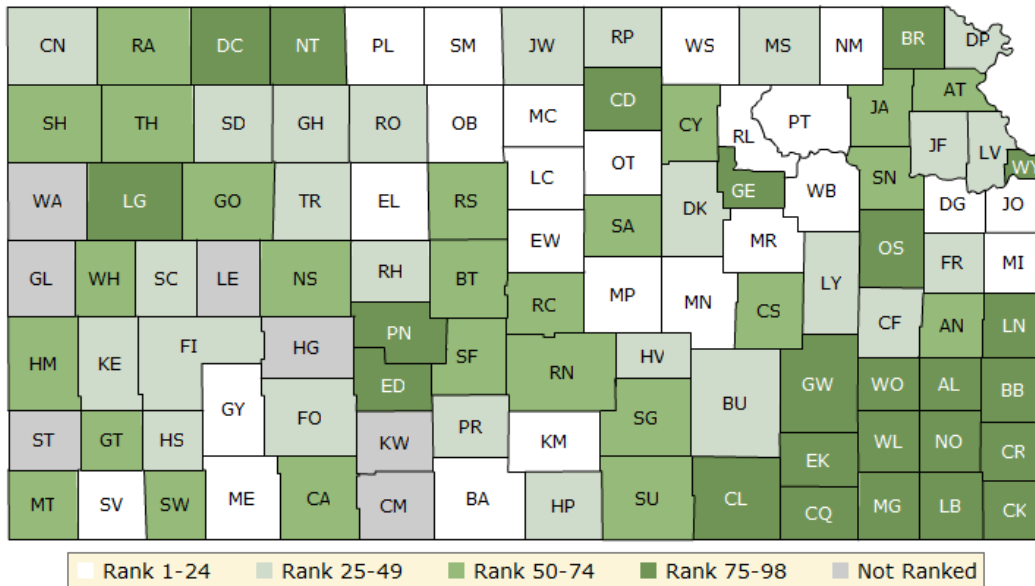
In communities large and small, people from all walks of life are taking ownership and action to improve health. Visit countyhealthrankings.org to get ideas and guidance on how you can take action in your community. Working with others, you can improve the health of your community.



The green map below shows the distribution of Kansas's **health outcomes**, based on an equal weighting of length and quality of life.

Lighter colors indicate better performance in the respective summary rankings. Detailed information on the underlying measures is available on our web site.

HEALTH OUTCOMES RANKS

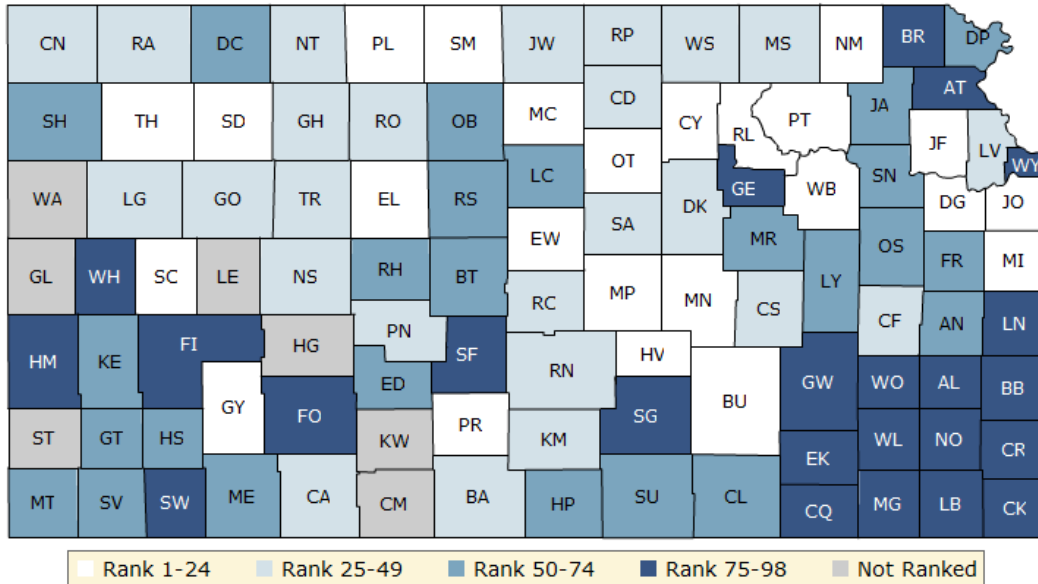


County	Rank	County	Rank	County	Rank	County	Rank
Allen	79	Finney	48	Logan	93	Rooks	41
Anderson	57	Ford	34	Lyon	28	Rush	45
Atchison	59	Franklin	47	Marion	15	Russell	74
Barber	7	Geary	88	Marshall	37	Saline	62
Barton	68	Gove	58	McPherson	10	Scott	49
Bourbon	85	Graham	38	Meade	17	Sedgwick	69
Brown	76	Grant	53	Miami	24	Seward	56
Butler	42	Gray	23	Mitchell	20	Shawnee	66
Chase	55	Greeley	NR	Montgomery	91	Sheridan	44
Chautauqua	95	Greenwood	87	Morris	21	Sherman	52
Cherokee	92	Hamilton	61	Morton	65	Smith	14
Cheyenne	43	Harper	40	Nemaha	16	Stafford	70
Clark	60	Harvey	25	Neosho	86	Stanton	NR
Clay	50	Haskell	36	Ness	63	Stevens	5
Cloud	78	Hodgeman	NR	Norton	83	Sumner	71
Coffey	39	Jackson	67	Osage	80	Thomas	73
Comanche	NR	Jefferson	29	Osborne	6	Trego	35
Cowley	75	Jewell	33	Ottawa	11	Wabaunsee	4
Crawford	77	Johnson	1	Pawnee	81	Wallace	NR
Decatur	94	Kearny	27	Phillips	22	Washington	9
Dickinson	26	Kingman	13	Pottawatomie	3	Wichita	72
Doniphan	30	Kiowa	NR	Pratt	46	Wilson	84
Douglas	8	Labette	90	Rawlins	64	Woodson	98
Edwards	89	Lane	NR	Reno	54	Wyandotte	96
Elk	97	Leavenworth	32	Republic	31		
Ellis	12	Lincoln	19	Rice	51		
Ellsworth	18	Linn	82	Riley	2		

The blue map displays Kansas's summary ranks for **health factors**, based on weighted scores for health behaviors, clinical care, social and economic factors, and the physical environment.

Lighter colors indicate better performance in the respective summary rankings. Detailed information on the underlying measures is available on our web site.

HEALTH FACTORS RANKS



County	Rank	County	Rank	County	Rank	County	Rank
Allen	81	Finney	88	Logan	40	Rooks	31
Anderson	61	Ford	84	Lyon	51	Rush	50
Atchison	83	Franklin	70	Marion	19	Russell	57
Barber	44	Geary	92	Marshall	28	Saline	49
Barton	58	Gove	30	McPherson	3	Scott	20
Bourbon	87	Graham	36	Meade	59	Sedgwick	75
Brown	82	Grant	63	Miami	14	Seward	86
Butler	18	Gray	17	Mitchell	4	Shawnee	62
Chase	46	Greeley	NR	Montgomery	95	Sheridan	7
Chautauqua	97	Greenwood	78	Morris	55	Sherman	52
Cherokee	91	Hamilton	80	Morton	69	Smith	13
Cheyenne	48	Harper	72	Nemaha	2	Stafford	76
Clark	29	Harvey	10	Neosho	77	Stanton	NR
Clay	11	Haskell	74	Ness	37	Stevens	67
Cloud	45	Hodgeman	NR	Norton	39	Sumner	71
Coffey	35	Jackson	68	Osage	65	Thomas	9
Comanche	NR	Jefferson	22	Osborne	54	Trego	34
Cowley	73	Jewell	25	Ottawa	15	Wabaunsee	21
Crawford	89	Johnson	1	Pawnee	38	Wallace	NR
Decatur	64	Kearny	66	Phillips	23	Washington	27
Dickinson	43	Kingman	32	Pottawatomie	8	Wichita	79
Doniphan	60	Kiowa	NR	Pratt	24	Wilson	96
Douglas	6	Labette	90	Rawlins	33	Woodson	94
Edwards	56	Lane	NR	Reno	42	Wyandotte	98
Elk	93	Leavenworth	41	Republic	26		
Ellis	5	Lincoln	53	Rice	47		
Ellsworth	16	Linn	85	Riley	12		

Summary Health Outcomes & Health Factors Rankings

Counties receive two ranks:

- Health Outcomes
- Health Factors

Each of these ranks represents a weighted summary of a number of measures.

Health outcomes represent how healthy a county is while health factors represent what influences the health of the county.

Rank	Health Outcomes	Rank	Health Factors
1	Johnson	1	Johnson
2	Riley	2	Nemaha
3	Pottawatomie	3	McPherson
4	Wabaunsee	4	Mitchell
5	Stevens	5	Ellis
6	Osborne	6	Douglas
7	Barber	7	Sheridan
8	Douglas	8	Pottawatomie
9	Washington	9	Thomas
10	McPherson	10	Harvey
11	Ottawa	11	Clay
12	Ellis	12	Riley
13	Kingman	13	Smith
14	Smith	14	Miami
15	Marion	15	Ottawa
16	Nemaha	16	Ellsworth
17	Meade	17	Gray
18	Ellsworth	18	Butler
19	Lincoln	19	Marion
20	Mitchell	20	Scott
21	Morris	21	Wabaunsee
22	Phillips	22	Jefferson
23	Gray	23	Phillips
24	Miami	24	Pratt
25	Harvey	25	Jewell
26	Dickinson	26	Republic
27	Kearny	27	Washington
28	Lyon	28	Marshall
29	Jefferson	29	Clark
30	Doniphan	30	Gove
31	Republic	31	Rooks
32	Leavenworth	32	Kingman
33	Jewell	33	Rawlins
34	Ford	34	Trego
35	Trego	35	Coffey
36	Haskell	36	Graham
37	Marshall	37	Ness
38	Graham	38	Pawnee
39	Coffey	39	Norton
40	Harper	40	Logan

Rank	Health Outcomes	Rank	Health Factors
41	Rooks	41	Leavenworth
42	Butler	42	Reno
43	Cheyenne	43	Dickinson
44	Sheridan	44	Barber
45	Rush	45	Cloud
46	Pratt	46	Chase
47	Franklin	47	Rice
48	Finney	48	Cheyenne
49	Scott	49	Saline
50	Clay	50	Rush
51	Rice	51	Lyon
52	Sherman	52	Sherman
53	Grant	53	Lincoln
54	Reno	54	Osborne
55	Chase	55	Morris
56	Seward	56	Edwards
57	Anderson	57	Russell
58	Gove	58	Barton
59	Atchison	59	Meade
60	Clark	60	Doniphan
61	Hamilton	61	Anderson
62	Saline	62	Shawnee
63	Ness	63	Grant
64	Rawlins	64	Decatur
65	Morton	65	Osage
66	Shawnee	66	Kearny
67	Jackson	67	Stevens
68	Barton	68	Jackson
69	Sedgwick	69	Morton
70	Stafford	70	Franklin
71	Sumner	71	Sumner
72	Wichita	72	Harper
73	Thomas	73	Cowley
74	Russell	74	Haskell
75	Cowley	75	Sedgwick
76	Brown	76	Stafford
77	Crawford	77	Neosho
78	Cloud	78	Greenwood
79	Allen	79	Wichita
80	Osage	80	Hamilton
81	Pawnee	81	Allen
82	Linn	82	Brown
83	Norton	83	Atchison
84	Wilson	84	Ford
85	Bourbon	85	Linn
86	Neosho	86	Seward
87	Greenwood	87	Bourbon
88	Geary	88	Finney

Rank	Health Outcomes	Rank	Health Factors
89	Edwards	89	Crawford
90	Labette	90	Labette
91	Montgomery	91	Cherokee
92	Cherokee	92	Geary
93	Logan	93	Elk
94	Decatur	94	Woodson
95	Chautauqua	95	Montgomery
96	Wyandotte	96	Wilson
97	Elk	97	Chautauqua
98	Woodson	98	Wyandotte

Not Ranked: Comanche, Greeley, Hodgeman, Kiowa, Lane, Stanton, Wallace

2014 County Health Rankings: Measures, Data Sources, and Years of Data

	Measure	Data Source	Years of Data
HEALTH OUTCOMES			
Length of Life	Premature death	National Center for Health Statistics	2008-2010
Quality of Life	Poor or fair health	Behavioral Risk Factor Surveillance System	2006-2012
	Poor physical health days	Behavioral Risk Factor Surveillance System	2006-2012
	Poor mental health days	Behavioral Risk Factor Surveillance System	2006-2012
	Low birthweight	National Center for Health Statistics	2005-2011
HEALTH FACTORS			
HEALTH BEHAVIORS			
Tobacco Use	Adult smoking	Behavioral Risk Factor Surveillance System	2006-2012
Diet and Exercise	Adult obesity	National Center for Chronic Disease Prevention and Health Promotion	2010
	Food environment index	USDA Food Environment Atlas, Map the Meal Gap	2010-2011
	Physical inactivity	National Center for Chronic Disease Prevention and Health Promotion	2010
	Access to exercise opportunities	OneSource Global Business Browser, Delorme map data, ESRI, & US Census Tigerline Files	2010 & 2012
Alcohol and Drug Use	Excessive drinking	Behavioral Risk Factor Surveillance System	2006-2012
	Alcohol-impaired driving deaths	Fatality Analysis Reporting System	2008-2012
Sexual Activity	Sexually transmitted infections	National Center for HIV/AIDS, Viral Hepatitis, STD, and TB prevention	2011
	Teen births	National Center for Health Statistics	2005-2011
CLINICAL CARE			
Access to Care	Uninsured	Small Area Health Insurance Estimates	2011
	Primary care physicians	HRSA Area Resource File	2011
	Dentists	HRSA Area Resource File	2012
	Mental health providers	CMS, National Provider Identification	2013
Quality of Care	Preventable hospital stays	Medicare/Dartmouth Institute	2011
	Diabetic screening	Medicare/Dartmouth Institute	2011
	Mammography screening	Medicare/Dartmouth Institute	2011
SOCIAL AND ECONOMIC FACTORS			
Education	High school graduation	data.gov, supplemented with National Center for Education Statistics	2010-2011
	Some college	American Community Survey	2008-2012
Employment	Unemployment	Bureau of Labor Statistics	2012
Income	Children in poverty	Small Area Income and Poverty Estimates	2012
Family and Social Support	Inadequate social support	Behavioral Risk Factor Surveillance System	2005-2010
	Children in single-parent households	American Community Survey	2008-2012
Community Safety	Violent crime	Uniform Crime Reporting - FBI	2009-2011
	Injury deaths	CDC WONDER	2006-2010
PHYSICAL ENVIRONMENT			
Air and Water Quality	Air pollution - particulate matter ¹	CDC WONDER	2011
	Drinking water violations	Safe Drinking Water Information System	FY 2012-2013
Housing and Transit	Severe housing problems	HUD, Comprehensive Housing Affordability Strategy	2006-2010
	Driving alone to work	American Community Survey	2008-2012
	Long commute – driving alone	American Community Survey	2008-2012

¹ Not available for AK and HI.

CREDITS

Report Authors

University of Wisconsin-Madison
School of Medicine and Public Health
Department of Population Health Sciences
Population Health Institute

Bridget Catlin, PhD, MHSA
Amanda Jovaag, MS
Julie Willems Van Dijk, PhD, RN
Patrick Remington, MD, MPH

This publication would not have been possible without the following contributions:

Data

Centers for Disease Control and Prevention: National Center for Health Statistics and Division of Behavioral Surveillance
Dartmouth Institute for Health Policy & Clinical Practice

Research Assistance

Jennifer Buechner
Hyojun Park, MA
Elizabeth Pollock
Jennifer Robinson
Matthew Rodock, MPH
Anne Roubal, MS

Communications and Outreach

Burness Communications
Alison Bergum, MPA
Matthew Call
Kate Konkle, MPH
Kitty Jerome, MA
Karen Odegaard, MPH
Jan O'Neill, MPA

Design

Forum One, Alexandria, VA

Robert Wood Johnson Foundation

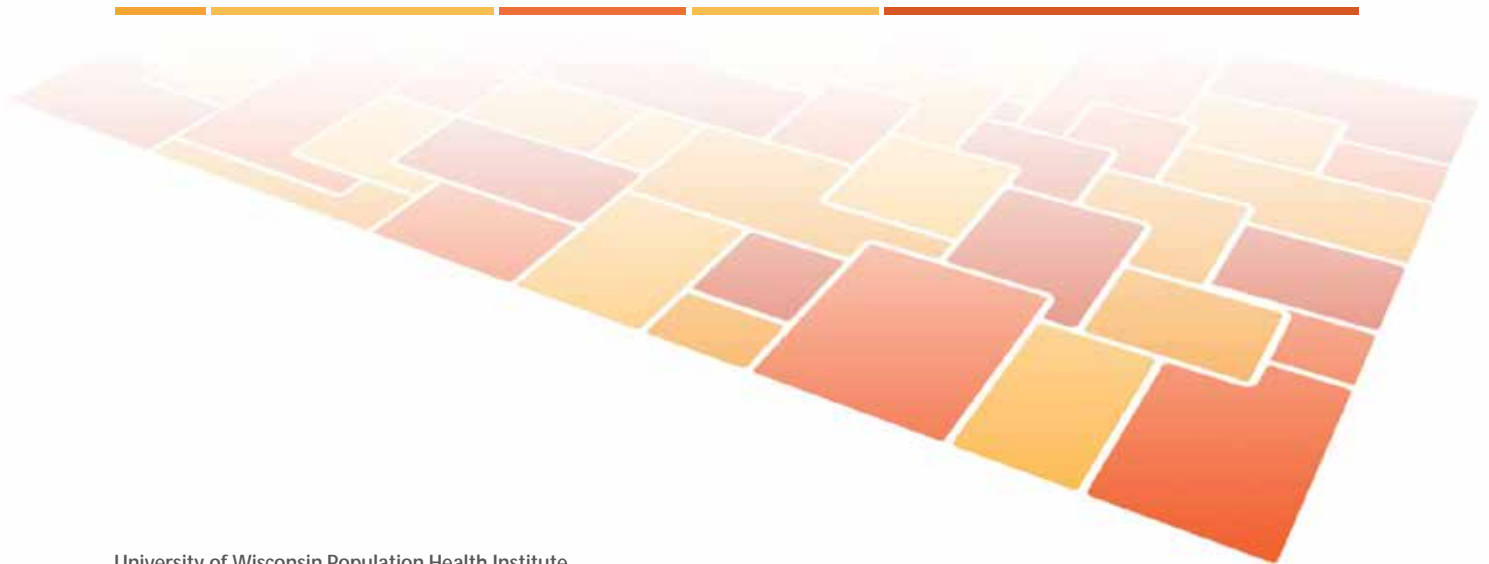
Abbey Cofsky, MPH – Senior Program Officer
Michelle Larkin, JD, MS, RN – Assistant Vice-President, Program Portfolios
Marjorie Paloma, MPH – Senior Policy Advisor
James S. Marks, MD, MPH – Senior Vice-President and Director, Program Portfolios
Joe Marx – Senior Communications Officer

Suggested citation: University of Wisconsin Population Health Institute. *County Health Rankings 2014*.

County Health Rankings & Roadmaps

Building a Culture of Health, County by County

countyhealthrankings.org



University of Wisconsin Population Health Institute
610 Walnut St, #524, Madison, WI 53726
(608) 265-8240 / info@countyhealthrankings.org

