

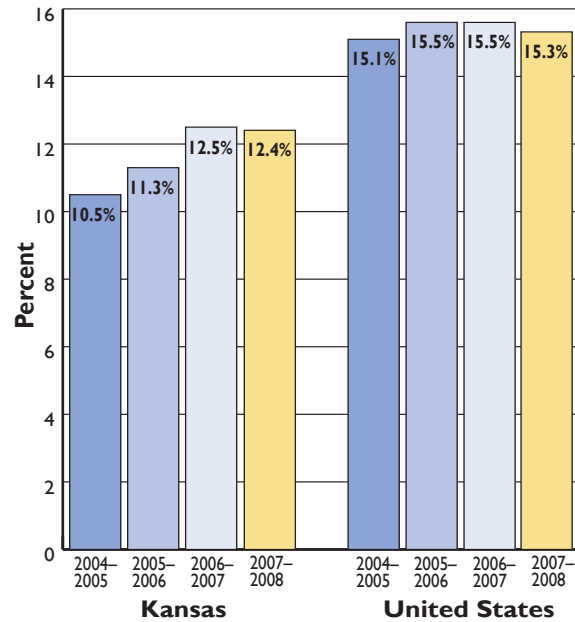


NO CHANGE IN KANSAS UNINSURED RATE BUT RATE OF UNINSURED CHILDREN CLIMBING

NEW INFORMATION FROM THE U.S. CENSUS BUREAU'S CURRENT POPULATION SURVEY

- In 2007–2008, 12.4 percent of Kansans were uninsured, not statistically different from either the 12.5 percent who were uninsured in 2006–2007 or the 11.3 percent in 2005–2006, but greater than the 10.5 percent who were uninsured in 2004–2005.
- The percentage of Kansas children (under 19) without health insurance in 2007–2008 was approximately 9.6 percent, up from 7.8 percent in 2006–2007 and from 7 percent in 2005–2006.
- The percentage of Kansans without health insurance in 2007–2008, 12.4 percent, is lower than the national percentage which stands at 15.3 percent.
- Approximately 338,000 Kansans were without health insurance in 2007–2008.
- Based on 2006–2008 three-year averages, the Kansas uninsured rate was higher than 13 other states, and lower than 26 other states. It was lower than the rates in either Oklahoma or Colorado, but was not statistically different than rates in either Missouri or Nebraska.
- The percentage of Kansans covered by private health insurance dropped to 72.3 percent in 2007–2008 from 76.0 percent in 2005–2006.
- 40.9 percent of adult Kansans without health insurance worked full-time, year-round in 2007–2008, down from approximately 46.1 percent in 2006–2007.
- Although the percentage of Hispanics in the U.S. without health insurance dropped from 33.1 percent in 2006–2007 to 31.4 percent in 2007–2008, there was not a statistically significant change in the percentage of Hispanics in Kansas without health insurance.

PERCENT UNINSURED



Source: KHI estimates are two-year averages based on the March Current Population Survey, 2005 to 2009.

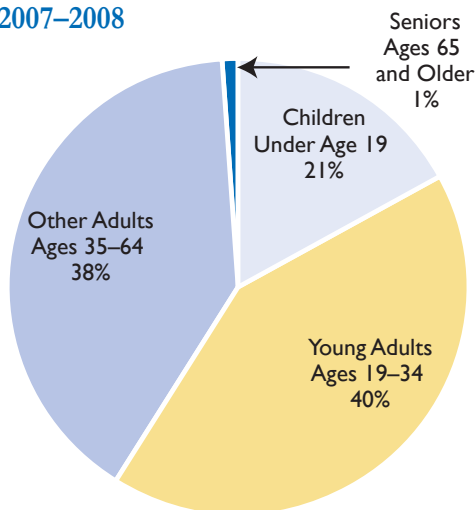
PERCENT IN EACH AGE CATEGORY WHO ARE UNINSURED: 2007–2008

UNINSURED	KANSAS	UNITED STATES
All Ages	12.4%	15.3%
Under Age 19 (Children)	9.6%	10.8%
Ages 19–34 (Young Adults)	21.9%	27.7%
Ages 35–64 (Other Adults)	12.4%	15.8%
Ages 65 and Older (Seniors)	0.9%	1.8%

Source: KHI estimates are two-year averages based on the March Current Population Survey, 2008 and 2009.

UNINSURED KANSANS BY AGE: 2007–2008

2007–2008



Source: KHI estimates are two-year averages based on the March Current Population Survey, 2008 and 2009.

NUMBER UNINSURED BY AGE: 2007–2008

UNINSURED	KANSAS	UNITED STATES
TOTAL	337,859	45,998,356
Under Age 19 (Children)	71,802	8,474,234
Ages 19–34 (Young Adults)	134,889	17,912,013
Ages 35–64 (Other Adults)	128,084	18,945,808
Ages 65 and Older (Seniors)	3,085	666,302

Source: KHI estimates are two-year averages based on the March Current Population Survey, 2008 and 2009.

PERCENT IN EACH DEMOGRAPHIC CATEGORY WHO ARE UNINSURED: 2007–2008

UNINSURED	KANSAS	UNITED STATES
White, Non-Hispanic	9.6%	10.6%
Black, Non-Hispanic	18.0%	19.2%
Hispanic, Any Race	31.7%	31.4%
Other, Multiple Races	18.0%	17.0%
Employed Full-Time, Year-Round	11.1%	14.7%
Employed Part-Time, Year-Round	25.1%	24.5%
Not Employed	19.0%	26.1%

Source: KHI estimates are two-year averages based on the March Current Population Survey, 2008 and 2009.



**KANSAS
HEALTH
INSTITUTE**

The Kansas Health Institute is an independent, nonprofit health policy and research organization based in Topeka, Kansas.

Established in 1995 with a multiyear grant from the Kansas Health Foundation, the Kansas Health Institute conducts research and policy analysis on issues that affect the health of Kansans.

Kansas Health Institute
212 SW Eighth Ave., Suite 300
Topeka, Kansas 66603-3936
Telephone 785.233.5443
Fax 785.233.1168

Copyright© Kansas Health Institute
2009. Materials may be reprinted with
written permission.

KHI/09-11 • September 2009

ABOUT THE DATA

- The Census Bureau intends the Current Population Survey (CPS), which has been used to produce annual estimates of health insurance coverage since 1980, to measure the number of people who were uninsured for an entire preceding calendar year. However, many analysts believe that, for at least some states, the CPS estimate is closer to a point-in-time measure, indicating the average number of uninsured on any given day in the preceding calendar year.
- In late September, the Census Bureau will release a new source of data for point-in-time health insurance coverage estimates, the American Community Survey (ACS). The first year of data will cover calendar year 2008. While the ACS has a larger sample size than CPS and may become one of the principal sources of data about the number of uninsured, there is no ACS health insurance data prior to 2008. Thus, CPS remains the principal source of data for understanding trends of uninsurance from 1980–2008.

MORE INFORMATION

For more information about health insurance and the uninsured in Kansas, visit www.khi.org