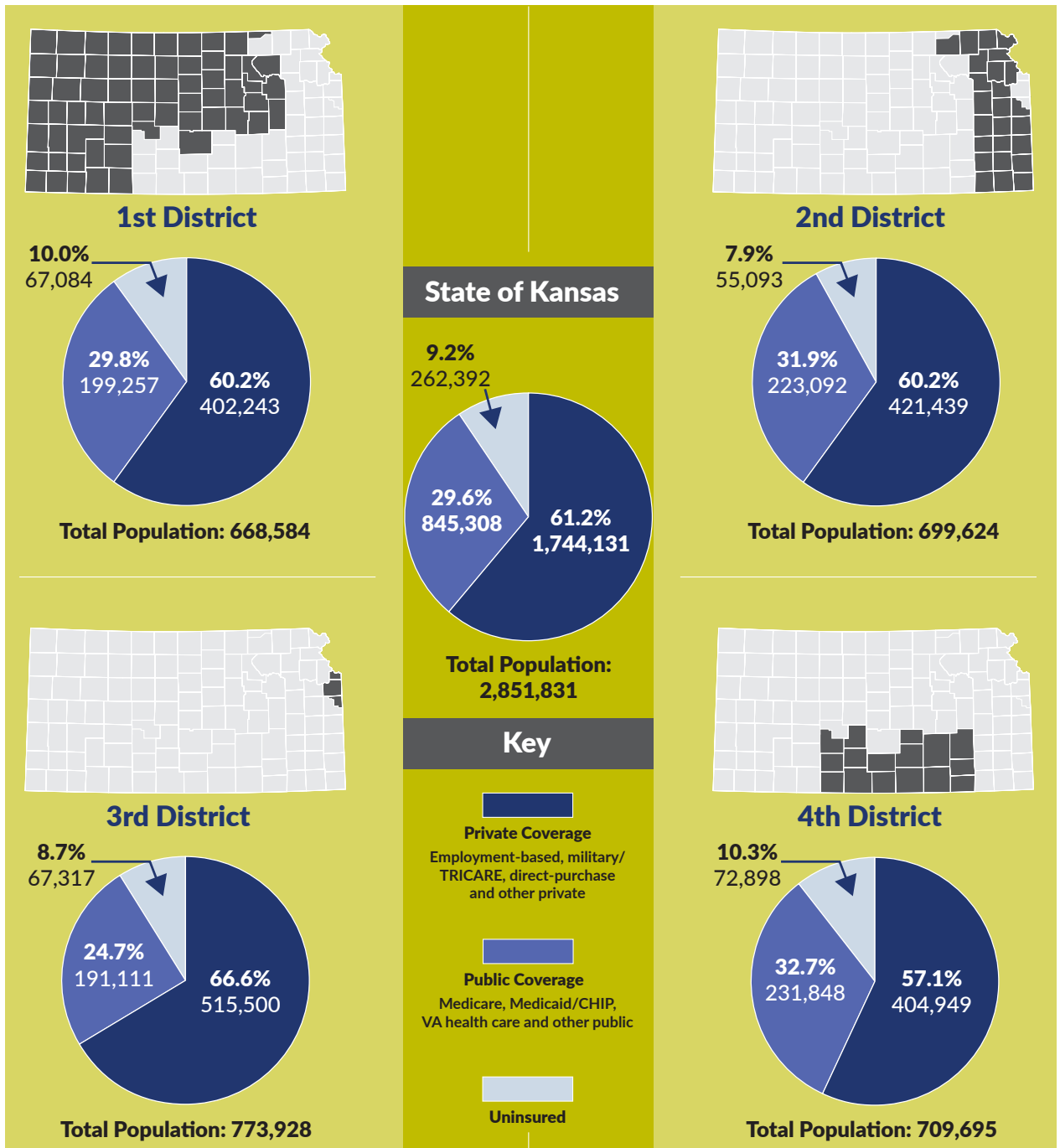


INSURANCE COVERAGE BY KANSAS CONGRESSIONAL DISTRICT

Using data from the U.S. Census Bureau, this fact sheet details health insurance coverage for Kansans in 2019 by congressional district as well as by age group (page 2).



Note: All Kansans (civilian noninstitutionalized population) = 2,851,831. Percentages may not sum to 100 percent due to rounding. Margins of error for combined population subgroups are not available, so statistical tests for significant differences cannot be conducted. Since American Community Survey (ACS) respondents can report more than one type of insurance, KHI utilizes a standard hierarchy of public coverage, private coverage and then uninsured.

Source: KHI analysis of data from the U.S. Census Bureau 2019 1-year American Community Survey table B27010, available at <https://bit.ly/3j96MRf>

Insurance Coverage by Age and Congressional District, 2019

2019	Total Population	Private Coverage		Public Coverage		Uninsured	
		Number	Percentage	Number	Percentage	Number	Percentage
Kansas Overall	2,851,831	1,744,131	61.2%	845,308	29.6%	262,392	9.2%
Children, Age 0-18	739,651	476,973	64.5%	219,642	29.7%	43,036	5.8%
Adults, Age 19-64	1,652,156	1,254,802	75.9%	180,723	10.9%	216,631	13.1%
Adults, Age 65+	460,024	12,356	2.7%	444,943	96.7%	2,725	0.6%

1st District	668,584	402,243	60.2%	199,257	29.8%	67,084	10.0%
Children, Age 0-18	174,092	112,176	64.4%	49,980	28.7%	11,936	6.9%
Adults, Age 19-64	379,417	286,878	75.6%	38,261	10.1%	54,278	14.3%
Adults, Age 65+	115,075	3,189	2.8%	111,016	96.5%	870	0.8%

2nd District	699,624	421,439	60.2%	223,092	31.9%	55,093	7.9%
Children, Age 0-18	172,334	111,459	64.7%	53,360	31.0%	7,515	4.4%
Adults, Age 19-64	405,124	306,999	75.8%	50,795	12.5%	47,330	11.7%
Adults, Age 65+	122,166	2,981	2.4%	118,937	97.4%	248	0.2%

3rd District	773,928	515,500	66.6%	191,111	24.7%	67,317	8.7%
Children, Age 0-18	203,333	141,562	69.6%	49,338	24.3%	12,433	6.1%
Adults, Age 19-64	460,773	370,371	80.4%	36,193	7.9%	54,209	11.8%
Adults, Age 65+	109,822	3,567	3.2%	105,580	96.1%	675	0.6%

4th District	709,695	404,949	57.1%	231,848	32.7%	72,898	10.3%
Children, Age 0-18	189,892	111,776	58.9%	66,964	35.3%	11,152	5.9%
Adults, Age 19-64	406,842	290,554	71.4%	55,474	13.6%	60,814	14.9%
Adults, Age 65+	112,961	2,619	2.3%	109,410	96.9%	932	0.8%

Note: All Kansans (civilian noninstitutionalized population) = 2,851,831. Percentages may not sum to 100 percent due to rounding. Margins of error for combined population subgroups are not available, so statistical tests for significant differences cannot be conducted. Since ACS respondents can report more than one type of insurance, KHI utilizes a standard hierarchy of public coverage, private coverage and then uninsured.

Source: KHI analysis of data from the U.S. Census Bureau 2019 1-year American Community Survey table B27010, available at <https://bit.ly/3j96MRf>

ABOUT THE FACT SHEET

This fact sheet is based on work done by Wen-Chieh Lin, Ph.D., Emily Burgen, M.P.H., and Cheng-You Tsai, M.P.H. It is available online at khi.org/policy/article/20-46.

KANSAS HEALTH INSTITUTE

The Kansas Health Institute supports effective policymaking through nonpartisan research, education and engagement. KHI believes evidence-based information, objective analysis and civil dialogue enable policy leaders to be champions for a healthier Kansas. Established in 1995 with a multiyear grant from the Kansas Health Foundation, KHI is a nonprofit, nonpartisan educational organization based in Topeka.

Copyright© Kansas Health Institute 2020. Materials may be reprinted with written permission. Reference publication number KHI/20-46.

212 SW 8th Avenue | Suite 300
Topeka, Kansas | 66603-3936

785.233.5443

khi.org

/KHIorg

@KHIorg

KHIorg