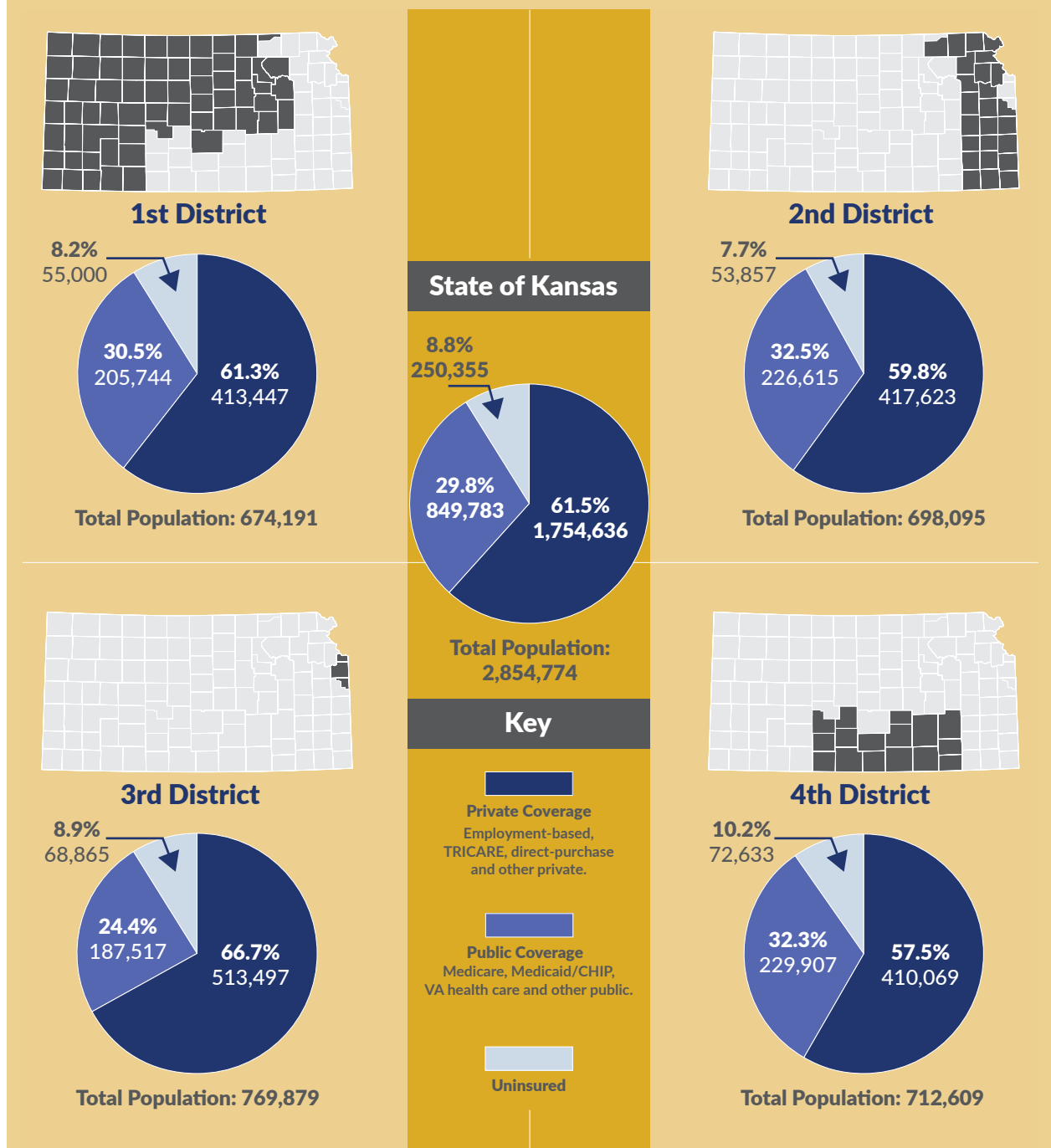




INSURANCE COVERAGE BY KANSAS CONGRESSIONAL DISTRICT

Using data from the U.S. Census Bureau, this fact sheet details health insurance coverage for Kansans in 2018 by congressional district (Figure 1) as well as by age group (Figure 2, page 2).

Figure 1. Health Insurance Coverage by Congressional District, 2018



Note: All Kansans (civilian noninstitutionalized population) = 2,854,774. Percentages may not sum to 100 percent due to rounding. Margins of error for population subgroups are not available, so statistical tests for significant differences cannot be conducted. Source: KHI analysis of data from the U.S. Census Bureau 2018 1-year American Community Survey table B27010, available at bit.ly/KS-Coverage2018

Figure 2. Health Insurance Coverage by Age and Congressional District, 2018

2018	Population	Private Coverage		Public Coverage		Uninsured	
		Number	Percentage	Number	Percentage	Number	Percentage
Kansas Overall	2,854,774	1,754,636	61.5%	849,783	29.8%	250,355	8.8%
Children, Age 0-18	746,787	482,395	64.6%	226,255	30.3%	38,137	5.1%
Adults, Age 19-64	1,664,412	1,259,133	75.7%	195,110	11.7%	210,169	12.6%
Adults, Age 65+	443,575	13,108	3.0%	428,418	96.6%	2,049	0.5%
1st District	674,191	413,447	61.3%	205,744	30.5%	55,000	8.2%
Children, Age 0-18	178,078	113,802	63.9%	56,951	32.0%	7,325	4.1%
Adults, Age 19-64	386,651	297,259	76.9%	41,904	10.8%	47,488	12.3%
Adults, Age 65+	109,462	2,386	2.2%	106,889	97.6%	187	0.2%
2nd District	698,095	417,623	59.8%	226,615	32.5%	53,857	7.7%
Children, Age 0-18	173,316	114,226	65.9%	51,497	29.7%	7,593	4.4%
Adults, Age 19-64	406,867	300,806	73.9%	60,151	14.8%	45,910	11.3%
Adults, Age 65+	117,912	2,591	2.2%	114,967	97.5%	354	0.3%
3rd District	769,879	513,497	66.7%	187,517	24.4%	68,865	8.9%
Children, Age 0-18	204,533	143,501	70.2%	49,396	24.2%	11,636	5.7%
Adults, Age 19-64	459,624	364,110	79.2%	39,484	8.6%	56,030	12.2%
Adults, Age 65+	105,722	5,886	5.6%	98,637	93.3%	1,199	1.1%
4th District	712,609	410,069	57.5%	229,907	32.3%	72,633	10.2%
Children, Age 0-18	190,860	110,866	58.1%	68,411	35.8%	11,583	6.1%
Adults, Age 19-64	411,270	296,958	72.2%	53,571	13.0%	60,741	14.8%
Adults, Age 65+	110,479	2,245	2.0%	107,925	97.7%	309	0.3%

Note: All Kansans (civilian noninstitutionalized population) = 2,854,774. Percentages may not sum to 100 percent due to rounding. Margins of error for population subgroups are not available, so statistical tests for significant differences cannot be conducted.

Source: KHI analysis of data from the U.S. Census Bureau 2018 1-year American Community Survey table B27010, available at bit.ly/KS-Coverage2018

ABOUT THE FACT SHEET

This fact sheet is based on work done by Wen-Chieh Lin, Ph.D., Madison Hoover, M.S., and Hina B. Shah, M.P.H. It is available online at khi.org/policy/article/19-43.

KANSAS HEALTH INSTITUTE

The Kansas Health Institute supports effective policymaking through nonpartisan research, education and engagement. KHI believes evidence-based information, objective analysis and civil dialogue enable policy leaders to be champions for a healthier Kansas. Established in 1995 with a multiyear grant from the Kansas Health Foundation, KHI is a nonprofit, nonpartisan educational organization based in Topeka.

Copyright© Kansas Health Institute 2018. Materials may be reprinted with written permission. Reference publication number KHI/19-43.



212 SW 8th Avenue | Suite 300
Topeka, Kansas | 66603-3936



785.233.5443



khi.org



/KHIorg



@KHIorg



khi-org